

# Coordination of Transit Projects with the City of Irvine

# Overview of Partnership with City of Irvine

- Long-standing history of planning, funding, and delivering transit services and improvements in the City of Irvine (City)
- Irvine Metrolink Station— second busiest Metrolink station in Orange County
- Past City Council actions include adopting projects, executing cooperative agreements, accepting fund transfers, and reserving right-of-way
- Completed and planned projects have required, and continue to require, extensive coordination and shared objectives between Orange County Transportation Authority (OCTA) and City

# Irvine Transportation Center Amenities

- Parking – 1,650 spaces available – free parking up to 72 hours
- Bicycle racks and lockers
- Amtrak ticket office and waiting room
- Restrooms
- OC Bus routes:
  - OC Bus route 86
  - StationLink bus route 480
  - iShuttle routes 402C, 403D
- Loading zone for drop off/pick up, taxis, rideshare



# Irvine Transportation Center Services

- Metrolink Orange County Line
  - 19 weekday trains; 8 weekend trains
- Metrolink Inland Empire – Orange County Line
  - 14 weekday trains; 4 weekend trains
- Average weekday boardings – 428
- Average weekend boardings – 102
- Amtrak Pacific Surfliner
  - 20 daily trains
- Average boardings – 500



# Completed Projects

- Irvine Fixed-Guideway/Operation of iShuttle
  - 2009: Proposition 116 fund transfer from City to OCTA
  - 2010: Credit for iShuttle service from OCTA to City
  - 2016: City requests OCTA to operate iShuttle
- Sand Canyon Grade Separation
  - 2010: Funding term sheet approved by OCTA and City
  - 2010: OCTA agrees to relocate its maintenance-of-way property
  - 2011: OCTA begins construction as project lead
  - 2014: Grade separation completed
- Purchase and Sale Agreement for 21.3-Acre Rail Maintenance Facility Site
  - 2010: Funding term sheet approved by OCTA and City
  - 2010: City reserves 21.3-acre site for future maintenance facility
  - 2015: Purchase and sale agreement approved by OCTA and City
- Irvine Metrolink Station Parking Structure
  - 2003: OCTA and City entered into agreement for design and construction
  - 2006: OCTA secures \$25 million for construction
  - 2008: Parking structure completed

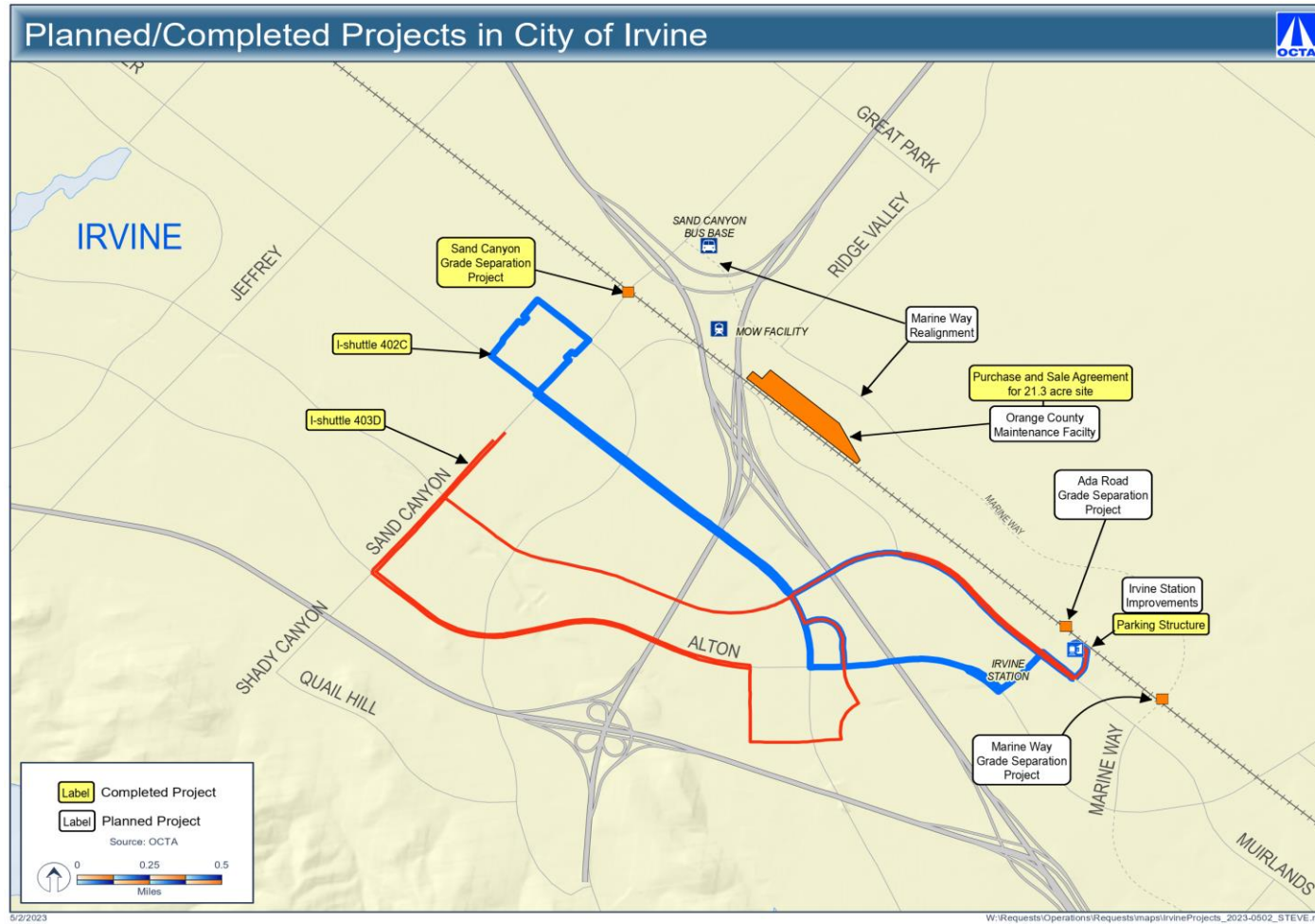


# Planned Projects

- Orange County Maintenance Facility
  - Part of Metrolink's Southern California Optimized Rail Expansion (SCORE) program
  - OCTA conducting environmental clearance
- Irvine Metrolink Station Improvement Project
  - Part of Metrolink's SCORE program
  - OCTA conducting environmental clearance
- Marine Way and Ada Grade Separations
  - City request for OCTA to review 30 percent design plans for Marine Way grade separation
- Marine Way Realignment
  - City request to realign Marine Way with northbound Interstate 5 on/off ramps at Sand Canyon Avenue



# Completed/Planned Projects in City



# Next Steps

- Based on history of partnering with City, OCTA will continue to balance regional transportation needs with local priorities
- Return to the Board of Directors for next steps on the Orange County Maintenance Facility, including additional outreach efforts

