



DIRECTIONS 2050

LONG-RANGE TRANSPORTATION PLAN

Connecting Communities: Better Mobility for All



Status Update

April 2026
Citizens Advisory Committee





Public Engagement



Hosted webinar, community leaders roundtable, and stakeholder presentations



Engaged public at community events



Distributed multilingual online and print surveys



Delivered multilingual fliers to community centers, city halls, and libraries



Promoted via multilingual print and radio ads, social media, texts, eblasts, and project video





L RTP Goals and Survey Results Summary



Expand Multimodal Capacity



Improve Operations

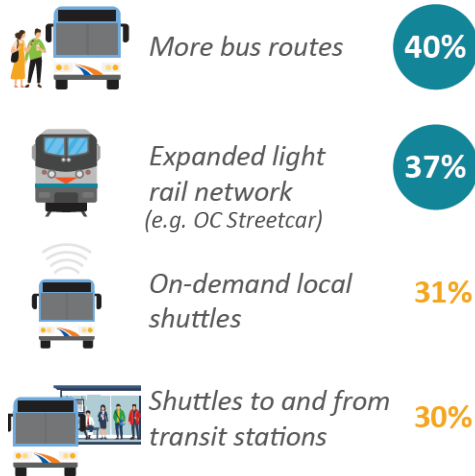


Enhance Accessibility

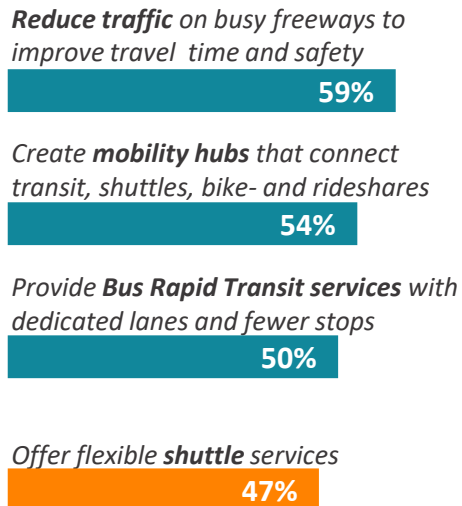


Strengthen System Resiliency

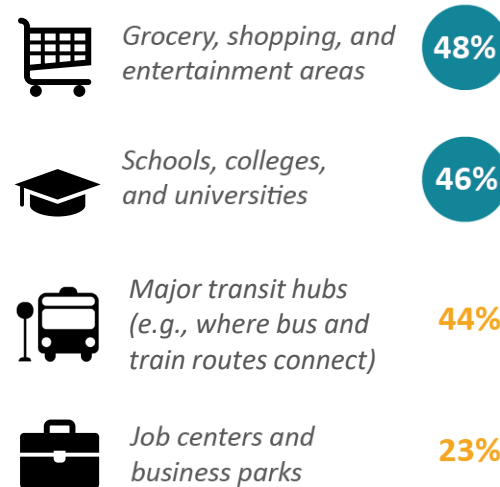
Top improvements to expand options:



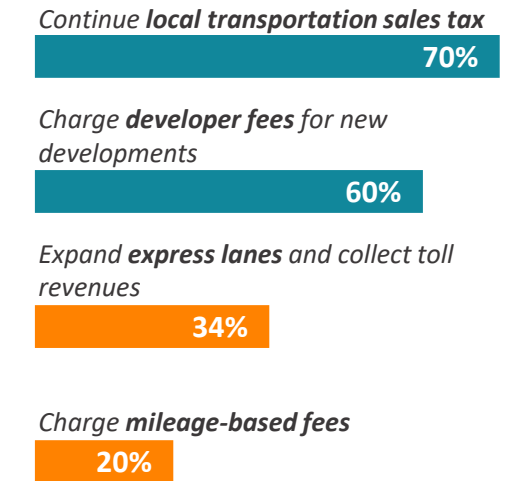
Top strategies to improve travel experience:



Priority destinations for improved access:








Top local funding approach:



Source: Over 1,800 public surveys collected from September 10 – November 9, 2025



2050 Preferred Plan Framework

Transit System 	Roadway Network 	Active Transportation 	Mobility Integration 	Resilience & System Readiness 
<ul style="list-style-type: none">• OC Bus and OC ACCESS• Transit opportunity corridors• Safe transit stops• OC Streetcar• Transit signal priority	<ul style="list-style-type: none">• Address freeway hotspots• MPAH buildout• Signal synchronization• Transportation systems management and operation• Convert HOV to express lanes	<ul style="list-style-type: none">• Bicycle and pedestrian network• Gap closure• Safety programs• Complete streets	<ul style="list-style-type: none">• Community circulators• Senior mobility programs• Travel demand management• Reduced or fare-free programs• Mobility hubs network	<ul style="list-style-type: none">• Environmental programs• Loal pavement maintenance• Zero-emission fleet• Climate adaptation and sustainability• Coastal rail stabilization• Goods movement

Legend:

Currently funded with Measure M2 half-cent sales tax

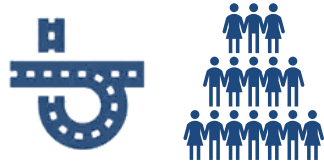


Project Scenarios



Existing

2024 Transportation Network
2024 Socioeconomic Data



2050 Baseline

2024 Transportation Network
2050 Socioeconomic Data
M2 Programs Sunset



2050 Preferred Plan

2050 Socioeconomic Data
2050 Preferred Plan
Projects/Programs

Socioeconomic Data	2024	2050 (% Change)
Population	3,232,000	3,327,000 (▲ 3%)
Housing (Dwelling Units)	1,112,000	1,253,000 (▲ 13%)
Jobs	1,837,000	2,019,000 (▲ 10%)

Source: Orange County Projections 2022 by Center for Demographic Research Cal State Fullerton



Preliminary Performance Results

Performance Measures	2024 Existing	2050 Baseline (% Δ to 2024 Existing)	Draft 2050 Preferred (% Δ to 2050 Baseline)
Daily Person Trips (All Modes)	16,595,000	17,181,000 (▲3.5%)	17,210,000 (▲0.2%)
Daily Transit Person Trips	97,700	92,500 (▼5%)	115,900 (▲25%)
Peak Period Freeway Speed (mph)	48.7	46.0 (▼2.7 mph)	47.7 (▲1.7 mph)
Peak Period Arterial Speed (mph)	28.4	23.2 (▼5.2 mph)	28.8 (▲5.6 mph)
Daily Vehicle Hours of Delay (VHD)	245,100	337,100 (▲38%)	202,100 (▼40%)
Delay as Percent of Travel Time	11%	13% (▲)	9% (▼)
Daily Vehicle Miles Traveled (VMT) per Capita	23.6	25.0 (▲6%)	24.2 (▼3.5%)

Source: OCTAM



Schedule and Milestones



Spring 2025:

- Challenges and Goals
- Baseline Modeling

Summer - Fall 2025:

- Board Update
- Phase 1 Outreach
- Project List Development
- Financial Forecast

Winter 2025/2026:

- Preferred Plan Modeling
- Performance Analysis
- Project List Refinement
- Financial Forecast (cont.)

Spring 2026:

- Board Update
- Develop Draft Plan

Summer 2026:

- Draft Plan Released for Public Review
- Phase 2 Public Outreach

Fall - Winter 2026:

- Develop Final Plan
- OCTA Board Approval
- Submit Project List to SCAG

2025

2026

Ongoing outreach, stakeholder engagement, and Board updates as appropriate

Note: Schedule is estimated and subject to change