

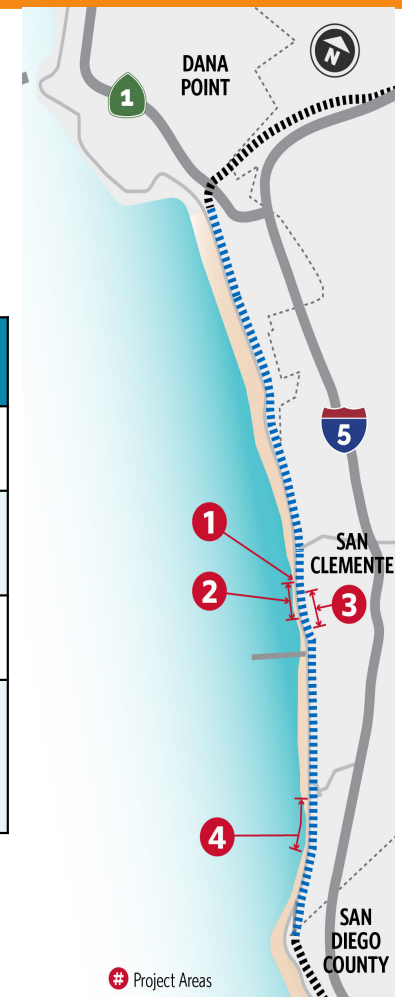
**Adopt Resolution No. 2025-068 and Authorize the  
Chief Executive Officer to Take all Necessary Actions to  
Address the Emergency Need for Railroad Track  
Stabilization in the Vicinity of Mile Post 203.80 to 204.40  
and 206.00 to 206.70 on the Orange Subdivision**

# Coastal Rail Stabilization Priority Project

- Four priority reinforcement areas were identified in January 2024
- Proposed solutions evaluated at a preliminary design level considering different materials, performance, costs, methods, and schedule

| Area | Location (MP)                      | Challenge  | Proposed Solutions   |
|------|------------------------------------|--|--|
| 1    | 203.80 – 203.90                    | Ongoing deterioration of existing riprap protection  | Riprap repair (900 tons/600 CY) followed by sand nourishment   |
| 2    | 204.00 – 204.40                    | Erosion - no beach at high tide and direct wave attack damaging existing riprap protection | Riprap repair (6,750 tons/4,500 CY) followed by sand nourishment   |
| 3    | 204.07 – 204.34                    | Steep bluffs with high potential for failure that could impact rail infrastructure         | 1,400-ft catchment structure   |
| 4    | 206.00 - 206.10<br>206.42 - 206.70 | Near San Clemente State Beach - erosion exposing areas of limited to no riprap protection  | Riprap repair (2,100 tons/1,400 CY) and 1,200-ft shoreline protection structure followed by sand nourishment |

MP – Mile Post  
CY – Cubic Yard



# Areas 1 and 2 Riprap Repair Activities

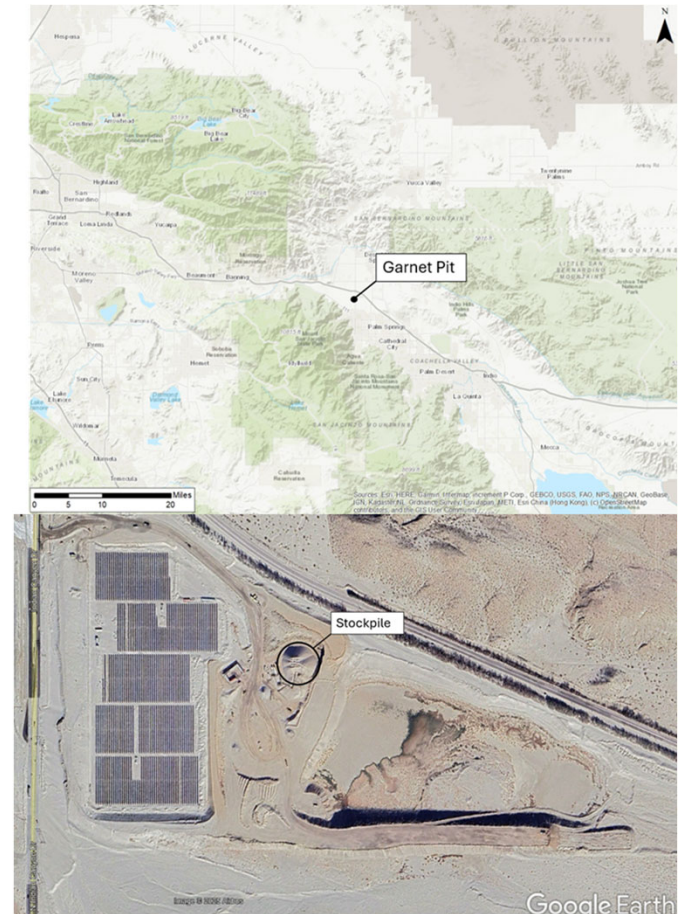
- All construction activities have been completed
- Passenger rail service resumed on June 7, 2025
- 5,900 tons/3,933 CY of riprap restacked
- Provided responses to the California Coastal Commission (CCC) on Emergency Coastal Development Permit (eCDP) conditions of approval for Areas 1 and 2 which included:
  - Revetment as-built plans
  - Sand and revetment monitoring plans
  - Sand nourishment update
  - California State Transportation Agency commitment letter to perform potential railroad relocation analysis
  - Correspondence on habitat mitigation and monitoring plan
  - Nesting bird monitoring and avoidance memorandum (April 23, 2025 and April 28, 2025 surveys)
- Received Notice of Incomplete from CCC on July 18, 2025, requesting additional construction as-built data and an update on the sand nourishment schedule





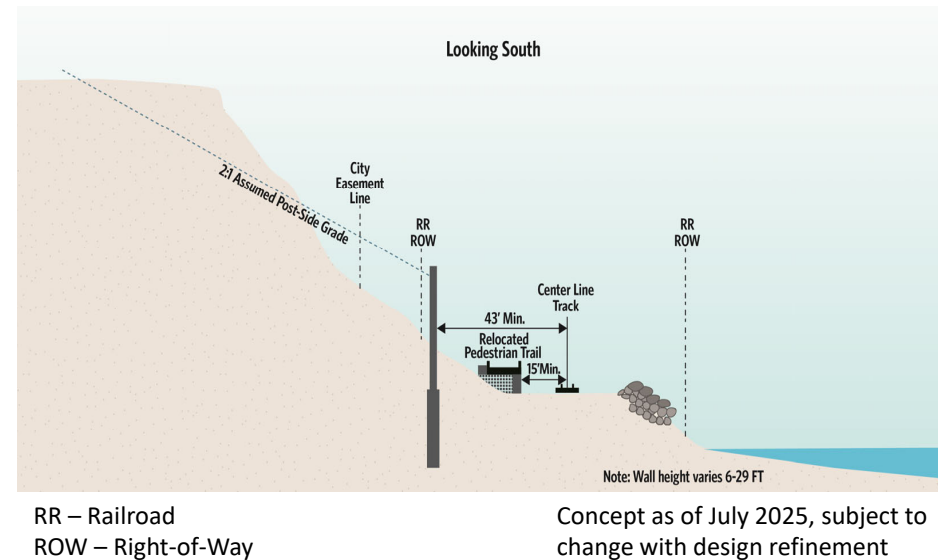
# North Beach and Area 1 Initial Sand Nourishment

- Initial sand nourishment is part of the larger effort for placing 240,000 CY of sand nourishment for Areas 1 and 2 approved by the CCC
- Orange County Transportation Authority (OCTA) is pursuing an inland sand source to place ~3,200 CY of sand in Area 1 and North Beach, outside of the United States Army Corps of Engineers' (USACE) jurisdiction to expedite sand delivery
- Ongoing coordination with Orange County Water District (OCWD) on availability of Prado Dam basin material
- Commercial sand pit (Garnet Pit) located near the City of Palm Springs has sand available immediately
  - Sampled and tested sand from the Garnet Pit and obtained approval for use from the Dredging Material and Management Team
- OCTA is coordinating with Southern California Regional Rail Authority (SCRRA) for right-of-entry permit, California State Lands Commission, USACE, and CCC on permitting, letter of permission, or waiver needs
- OCTA surveyed the latest beach conditions and is preparing sand nourishment plans and specifications for the initial sand nourishment for submittal to CCC
- OCTA is coordinating with SCRRA on temporary crossing for initial sand nourishment project



# Area 3 Mariposa Catchment Wall Activities

- California Transportation Commission allocated \$92.231 million
- The Federal Railroad Administration (FRA) issued a categorical exclusion (CE) determination under the National Environmental Policy Act
- FRA approved pre-award federal obligational authority to cover expenditures incurred since approval of the CE on June 3, 2025
- Contract executed and Notice to Proceed issued on June 17, 2025, to design-build contractor, Condon Johnson & Associates (CJA)
  - 100 percent design package submitted to CCC and City of San Clemente (City)
  - Structural steel column order made by CJA (critical)
- Cooperative agreement for construction support finalized with SCRRA (execution underway)
- Ongoing design and wall aesthetics coordination with SCRRA and the City
- Submitted wall aesthetics and trail plan to CCC
- Submitted CDP amendment for soil nail shoring and Verdura Wall for September 2025 CCC meeting
- Received approval from CCC for pedestrian bridge pier removal, site clearing and grubbing, and potholing activities, under eCDP extension



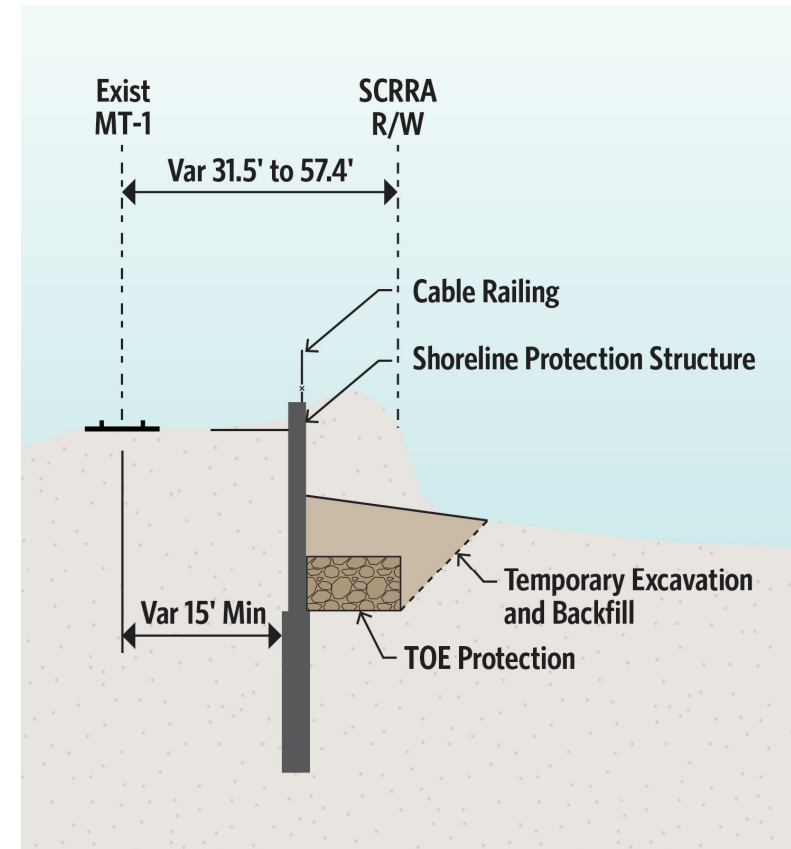


# Area 3 Catchment Wall



# Area 4 Shoreline Protection Structure Activities

- CCC does not recognize Area 4 as an emergency; no eCDP will be issued
- Resumed prior efforts to complete the pending CDP from 2024 and submitted responses on June 30, 2025, and seek opportunities to expedite review and approval
- Resubmitted the draft coastal erosion modeling report to address CCC comments
- CCC approved a CDP waiver for geotechnical investigation testing in the August CCC meeting
- Planning for geotechnical field investigations in preparation for conceptual design
- CCC to consider Area 4 CDP at future CCC meeting (date to be determined)



*Area 4 – Shoreline Protection Structure*



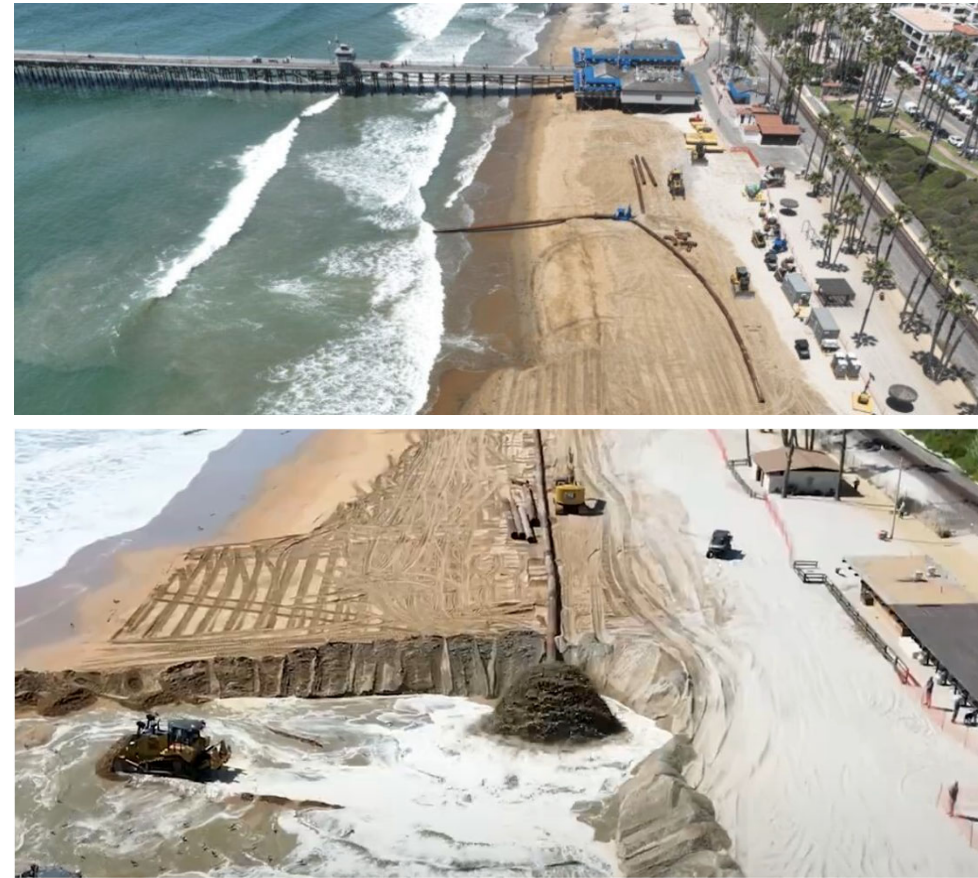
# Estimated Schedule

| Area 3 Mariposa Catchment Wall Activities             |             |             |             |             |             |             |             |             |             |             |             |             |
|---|-------------|-------------|-------------|-------------|-------------|-------------|-------------|-------------|-------------|-------------|-------------|-------------|
| Estimated Number of Months                            | 1           | 2           | 3           | 4           | 5           | 6           | 7           | 8           | 9           | 10          | 11          | 12          |
| Contract Duration                                     | <div></div> | <div></div> | <div></div> | <div></div> | <div></div> | <div></div> | <div></div> | <div></div> | <div></div> | <div></div> | <div></div> | <div></div> |
| Notice to Proceed (June 17, 2025)                     | <div></div> |             |             |             |             |             |             |             |             |             |             |             |
| Final Design  | 2 Months    |             |             |             |             |             |             |             |             |             |             |             |
| Steel Procurement                                     |             | 4 Months    |             |             |             |             |             |             |             |             |             |             |
| Construction  |             |             | 10 Months   |             |             |             |             |             |             |             |             |             |
|   |             |             |             |             |             |             |             |             |             |             |             |             |
| North Beach and Area 1 Initial Sand Placement         |             |             |             |             |             |             |             |             |             |             |             |             |
| Estimated Number of Months                            | 1           | 2           | 3           | 4           | 5           | 6           | 7           | 8           | 9           | 10          |             |             |
| Contractor Procurement & Placement of Sand (3 Months) | <div></div> | <div></div> | <div></div> |             |             |             |             |             |             |             |             |             |
|   |             |             |             |             |             |             |             |             |             |             |             |             |
| Wall Construction                                     |             |             |             |             |             |             |             |             |             |             |             |             |
| Estimated Number of Months                            | 1           | 2           | 3           | 4           | 5           | 6           | 7           | 8           | 9           | 10          |             |             |
| Area 4 - Shoreline Protection Structure               | 8 Months    |             |             |             |             |             |             |             |             |             |             |             |

Areas 1, 2, and 4 overall sand nourishment schedule is TBD depending on environmental and permit approvals

# Sand Nourishment

- Received eight responses to Request for Information for sand dredging and placement on May 5, 2025; responsiveness review completed
- Met with responsive proposers Manson, Kiewit, Dutra, and Great Lakes Dredge & Dock on their proposals
- Recommendation memo on prospective contractors under review
- OCTA is securing federal environmental clearance for offshore source dredging and placement of sand for Areas 1, 2, and 4
- OCTA is utilizing previous studies by the City to streamline the process, and the collaborative City offshore sand exploration is scheduled for August 2025, weather conditions permitting
- Marine environmental studies for beach nourishment is underway
- Preliminary schedule (subject to change):
  - Environmental and final design approvals: Anticipated Q4 of 2026
  - Procure sand nourishment contractor: Anticipated Q4 of 2026
  - Bids due date: Anticipated Q4 of 2026
  - Contract award and notice to proceed: Anticipated Q1 of 2027
  - Project completion: Anticipated in 2027



*Pictures from San Clemente Sand Replenishment Project*

# Recommendation

- Adopt Resolution No. 2025-068 and authorize the Chief Executive Officer to take all necessary actions to address the emergency need for railroad track stabilization in the vicinity of Mile Post 203.80 to 204.40 and 206.00 to 206.70 on the Orange Subdivision, and to return to the Board of Directors, as required, to report on the status thereof.
- Authorize the Chief Executive Officer to take any and all necessary actions regarding agreements with partner public agencies to address the emergency need for railroad track stabilization in the vicinity of Mile Post 203.80 to 204.40 and 206.00 to 206.70 on the Orange Subdivision.