

# Newport Transportation Center Relocation Feasibility Study Update





# Background

---

- **NTC Opened for Service in 1991**
  - Hub for OC Bus service in the City serving Fashion Island employment, medical, and recreational centers
  - Key connection point for four OC Bus routes serving coastal and central Orange County
- **OCTA Study in 2023-2024**
  - Explored transit supportive development following the City's interest in relocating fire station or constructing pickleball courts on NTC site
  - Study found relocation of NTC, or non-transit uses were not viable under current conditions
- **City Council requests City staff explore relocation of Fire Station No. 3 to current NTC site in June 2025**
  - City requests a joint study with OCTA to evaluate NTC relocation

City – City of Newport Beach  
OCTA – Orange County Transportation Authority  
No. – Number  
NTC – Newport Transportation Center  
Study – Newport Transportation Center Improvement Study



# Study Progress

---

- October 27, 2025: Board Action to Initiate Study
- December 15, 2025: Cooperative Agreement with City of Newport Beach Executed
- January 28, 2026: Jointly Selected Consultant Contract Executed
- February 10, 2026: Project Development Team Study Kickoff Meeting
- March 16, 2026: Project Development Team Meeting



# Summary of Project Development Team Meetings

---

- Attendees included OCTA, City, and consultant staff
- In February 2026, the Project Development Team discussed overall project approach, three proposed candidate sites for potential evaluation, and data collection needs
- In March 2026, the Project Development Team discussed study goals and objectives, evaluation criteria framework, and provided an overview of site visits conducted by OCTA Operations staff



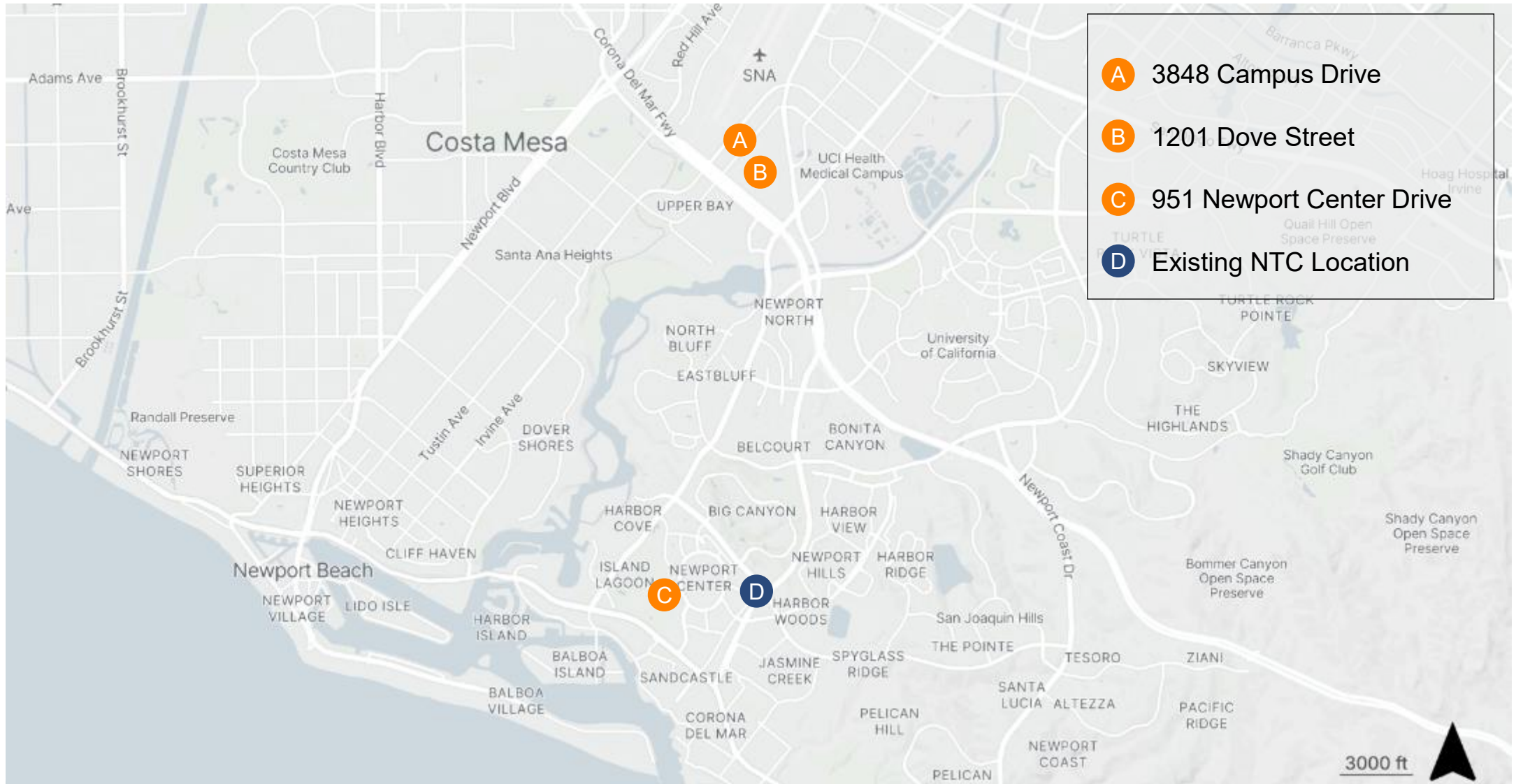
# Study Goals and Objectives

---

- Provide Safe and Efficient Transit Operations
- Maintain or Improve on NTC Ridership and Coach Operator Services
- Align with Community Planning, Economic Development, and Local Land Use
- Minimize Environmental Impacts and Support Regulatory Compliance
- Identify Real Estate Feasibility and Legal Compliance
- Assess Infrastructure Capacity and Resilience
- Assess Financial Feasibility



# Review of City Proposed Relocation Sites



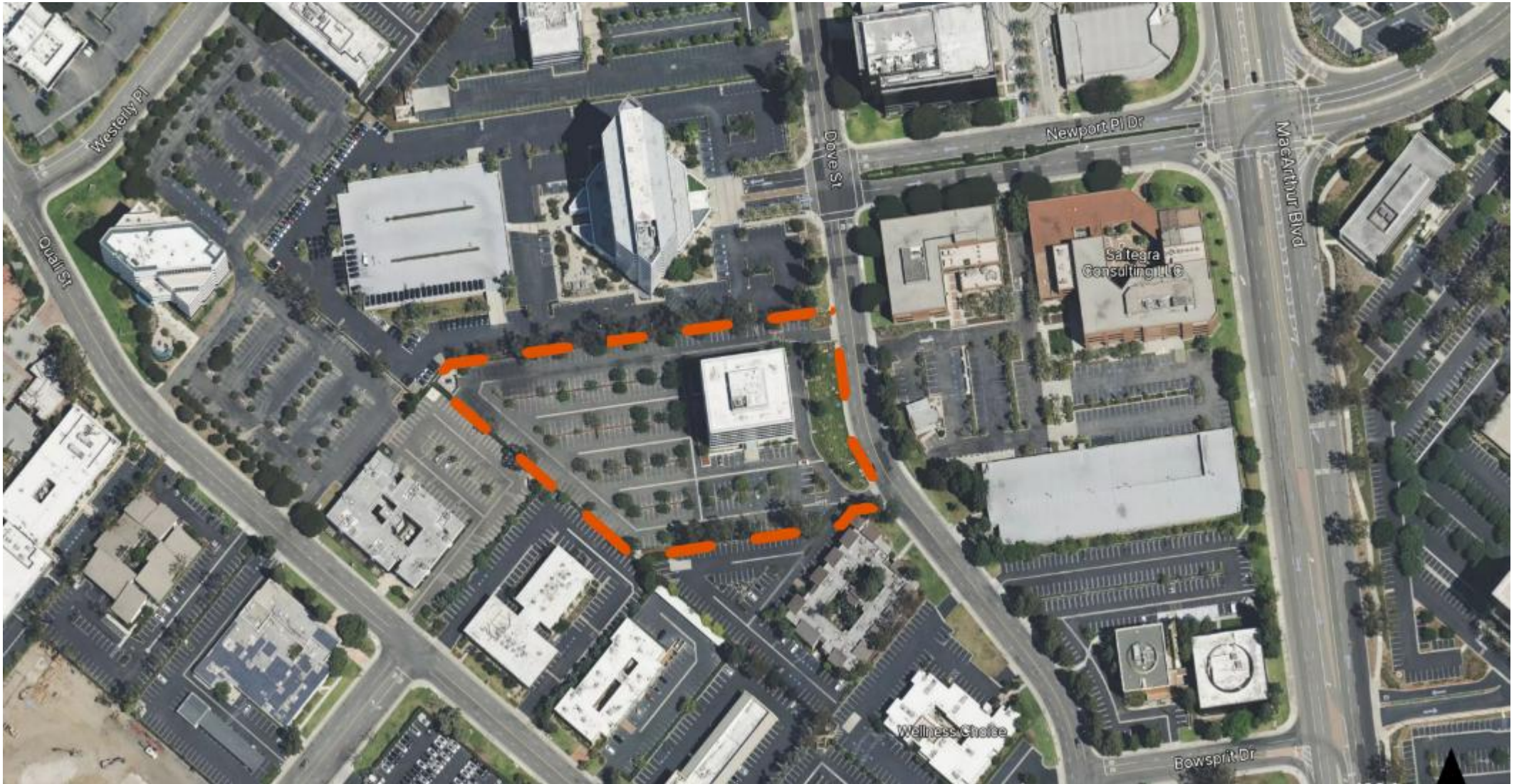


# Existing Newport Transportation Center



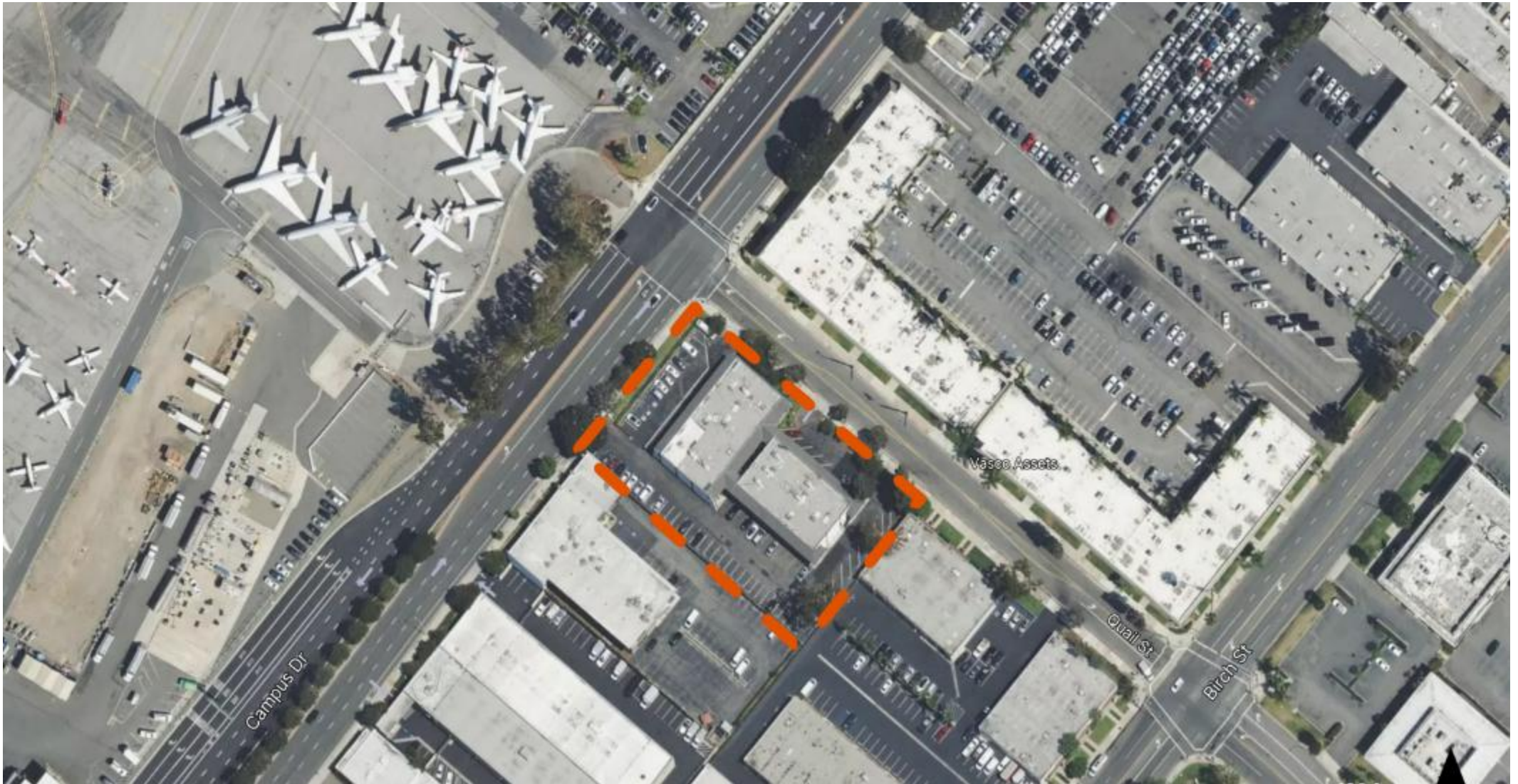


# 1201 Dove Street



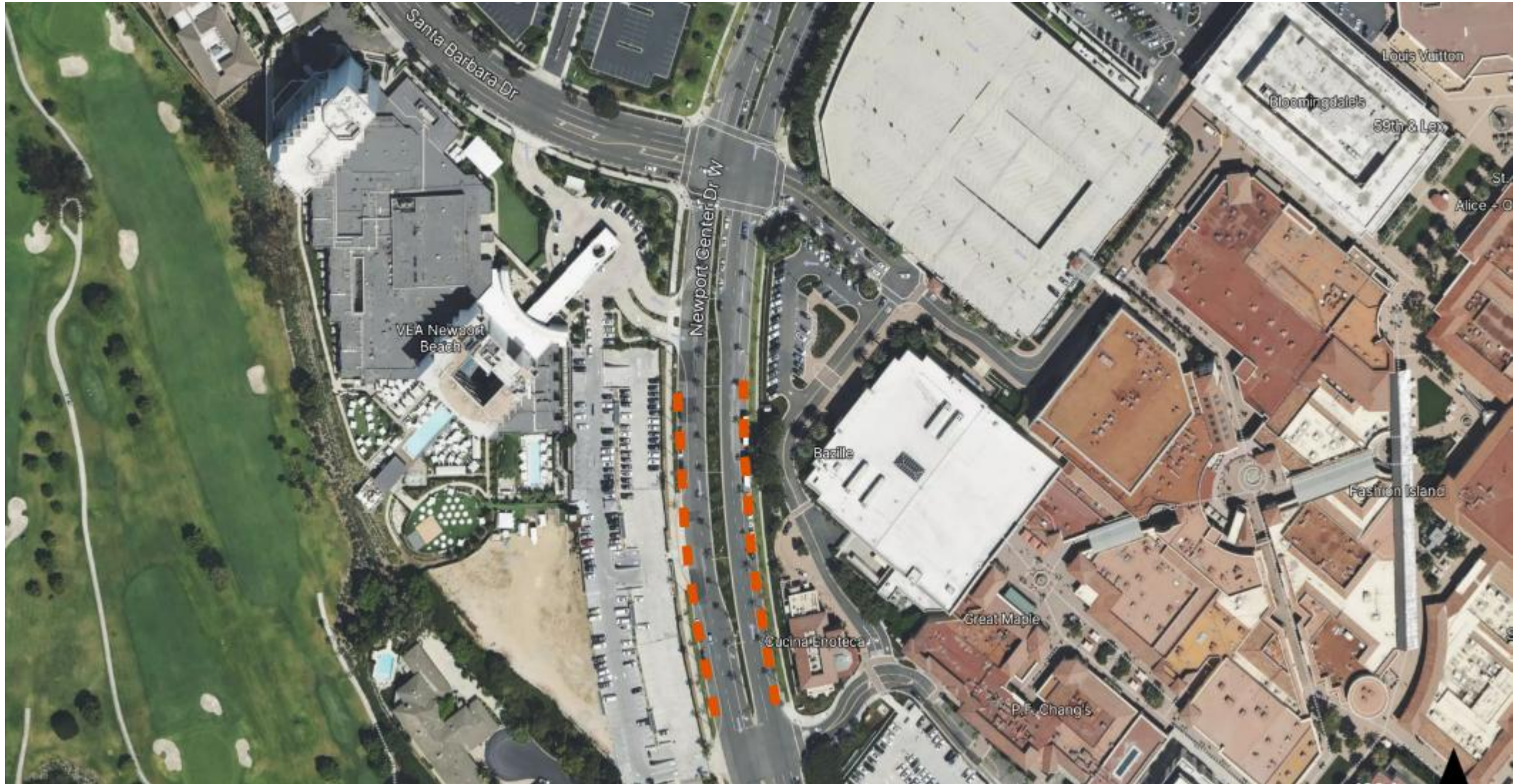


# 3848 Campus Drive





# 951 Newport Center Drive





# Evaluation Criteria Framework

---

- Transit Center Functionality
- Operational Continuity, Network Performance, and Ridership
- Access, Community Connectivity, and Equity
- Land Use and Strategic Compatibility
- Fiscal Responsibility and Implementation Feasibility
- Legal and Regulatory Constraints



## Transit Center Functionality

- Can the site support safe, efficient, and scalable transit operations?
- Evaluates bus circulation, layover capacity, passenger flow and amenities, ADA access, and ability to maintain or improve operational performance

## Ridership, Network Performance, and Operational Continuity

- Will the location maintain or enhance access for existing and future riders?
- Assesses travel times, transfer efficiency, regional connectivity, and access to key employment and activity centers



# Evaluation Criteria Framework (continued)

## Access, Equity, and Community Connectivity

- Does the site provide equitable and convenient access to transit?
- Reviews pedestrian and bicycle access, first/last mile connections, Title VI considerations, and impacts to transit-dependent populations

## Land Use and Strategic Compatibility

- Is the site compatible with surrounding uses and long-term planning goals?
- Evaluates consistency with the City's General Plan, growth areas, housing strategy, and OCTA's regional mobility objectives





# Evaluation Criteria Framework (continued)



## Fiscal Responsibility and Implementation Feasibility

- Is the project economically viable and deliverable?
- Compares capital and operating costs, funding responsibilities, lifecycle considerations, phasing, and constructability

## Legal and Regulatory Compliance

- Can the site meet applicable federal, state, and local requirements?
- Assesses FTA property requirements, deed restrictions, environmental clearance pathways, and other statutory constraints



# Screening and Evaluation

Threshold Screening		Comparative Evaluation
Does the site meet minimum requirements?		How does each viable site perform across the criteria?
<ul style="list-style-type: none"><li>• Ability to support core transit operations</li><li>• No critical implementation barriers</li></ul>		<ul style="list-style-type: none"><li>• Quantitative data (ridership impacts, travel times, cost estimates)</li><li>• Qualitative analysis (land-use compatibility, implementation risk)</li><li>• Consistent assumptions across all alternatives</li></ul>
Sites that do not meet minimum thresholds will not advance		Results will be summarized in a comparative matrix
<b>No critical flaws identified within the proposed sites at this stage</b>		



# Study Timeline

	2/26	3/26	4/26	5/26	6/26	7/26	8/26	9/26	10/26	11/26	12/16
<b>1: Project Management</b>			★		★					★	
1A: Project Management											
1B: Public Outreach and Engagement											
<b>2. Baseline Conditions and Needs Assessment</b>											
<b>3. Evaluation Criteria Development</b>											
<b>4: Site Relocation Assessment</b>											
4A: Alternative NTC Site Identification											
4B. Fire Station #3 Relocation Summarization											
4C. NTC Relocation Assessment											
<b>5: Environmental, Sustainability, and Technical Analysis</b>											



Interim Study Update



OCTA Transit Committee and Board Update



## Next Steps

---

- April 20, 2026, Project Development Team Meeting Scheduled
- Complete the Baseline Conditions and Needs Assessment
- Development of Conceptual Site Plans
- Site Relocation Assessment Process