

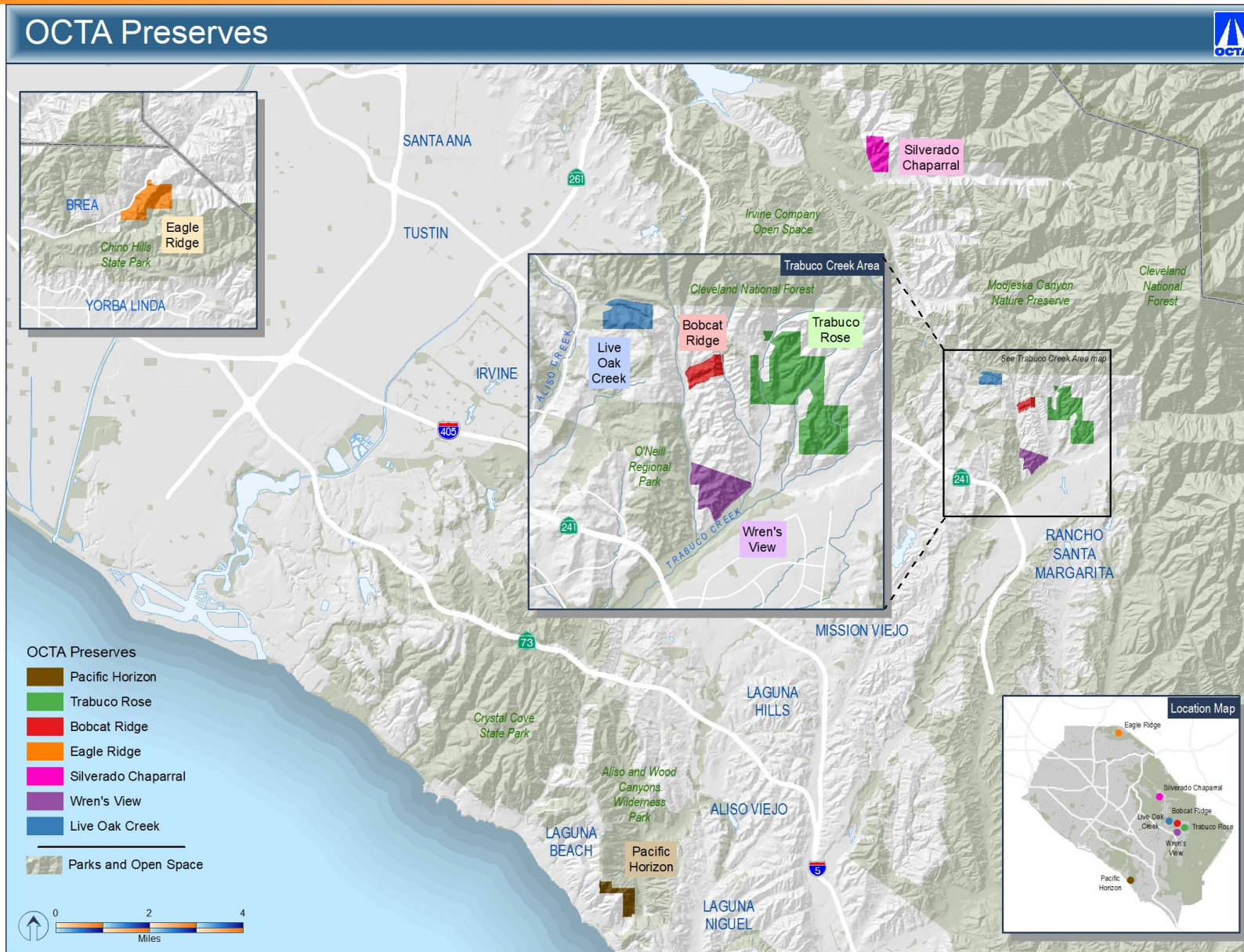
OCTA Environmental Oversight Committee

May 6, 2026



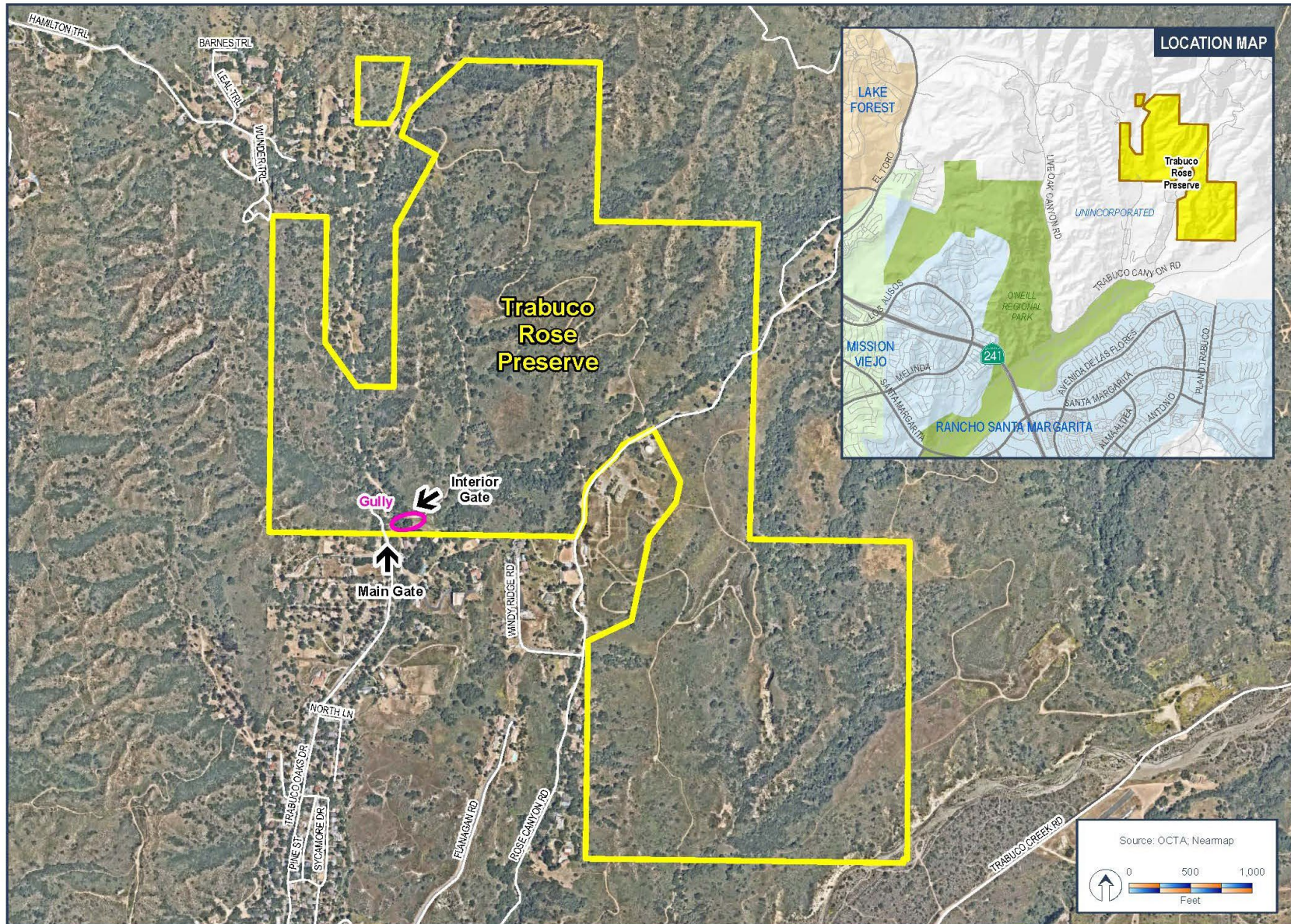


Item 6 - Trabuco Rose Gully Project Update





Trabuco Rose Preserve





Gully Restoration Project Overview

Description

Drainage created artificially decades ago at the Trabuco Rose Preserve. Approximately 150 feet in length.

Concerns

Undercutting the adjacent oak woodland habitat and compromising the existing infrastructure.

Solution

Fill the gully with clean material to create a more natural like creek system.





Phase 1 of the Gully Project



Focus

Stabilization of the upstream portion (approximately 80 linear feet).

Materials used

Geotech fabric, jute netting and rock were all used to help armor the creek and halt slope failure and sedimentation.

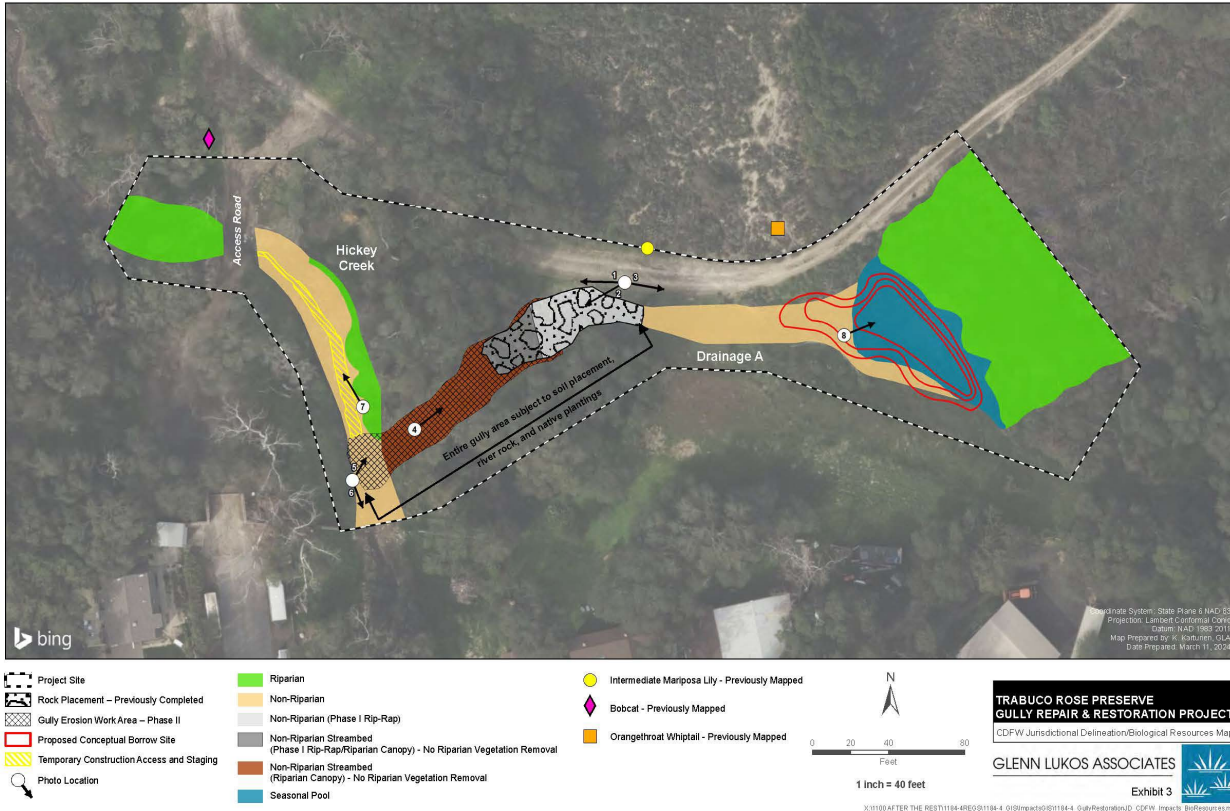


Remaining Tasks

Design, agency coordination and stabilization of the downstream portion of the gully.



Phase 2 of the Gully Project



Focus

Stabilization of the remaining portion and finessing entire stretch to mimic a natural creek.

Materials Proposed

Geotech fabric, jute netting, rock (large and filler) as well as sediment from the upstream detention basin.

Status

Monitoring of the surrounding sensitive resources. Work with the contractor to avoid and minimize impacts. Construction anticipated to take 4 weeks.



Conservation Plan and Permit Measures



Challenges

- Wetted channel
- Nesting birds
- Bio monitoring and agency coordination
- Materials sourcing