



Draft 2025 State Route 91 Implementation Plan



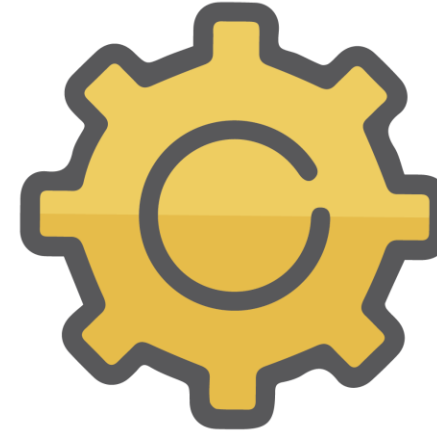
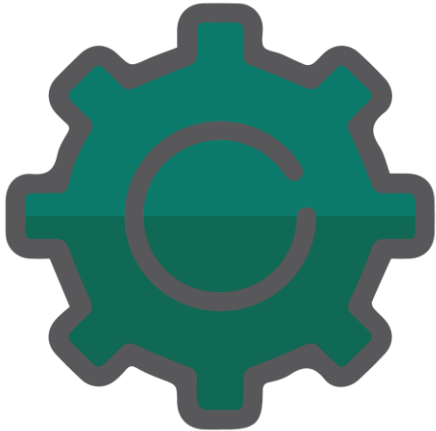
State Route 91 Implementation Plan

- Required by SB 1316 (Chapter 714, Statutes 2008)
- Updated annually to capture past, present, and future projects along SR-91
 - I-15 to SR-57
- Last updated June 2024
- Bi-county collaborative effort

I-15 - Interstate 15
SB - Senate Bill
SR-91 - State Route 91
SR-57 - State Route 57

Culmination of Efforts

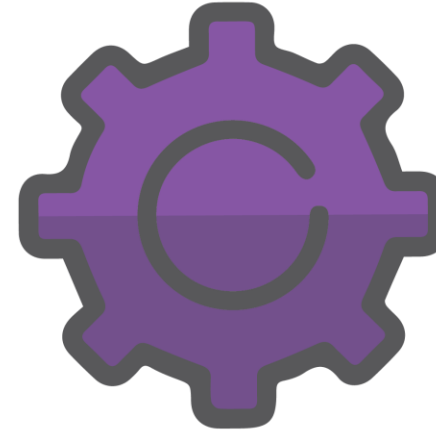
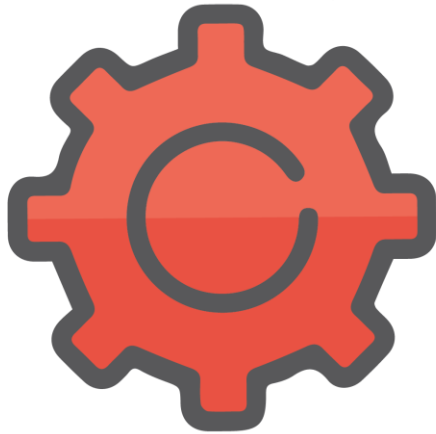
- 13 projects completed



- \$2.2 billion invested

Culmination of Efforts (continued)

- Approximately 77 lane miles added

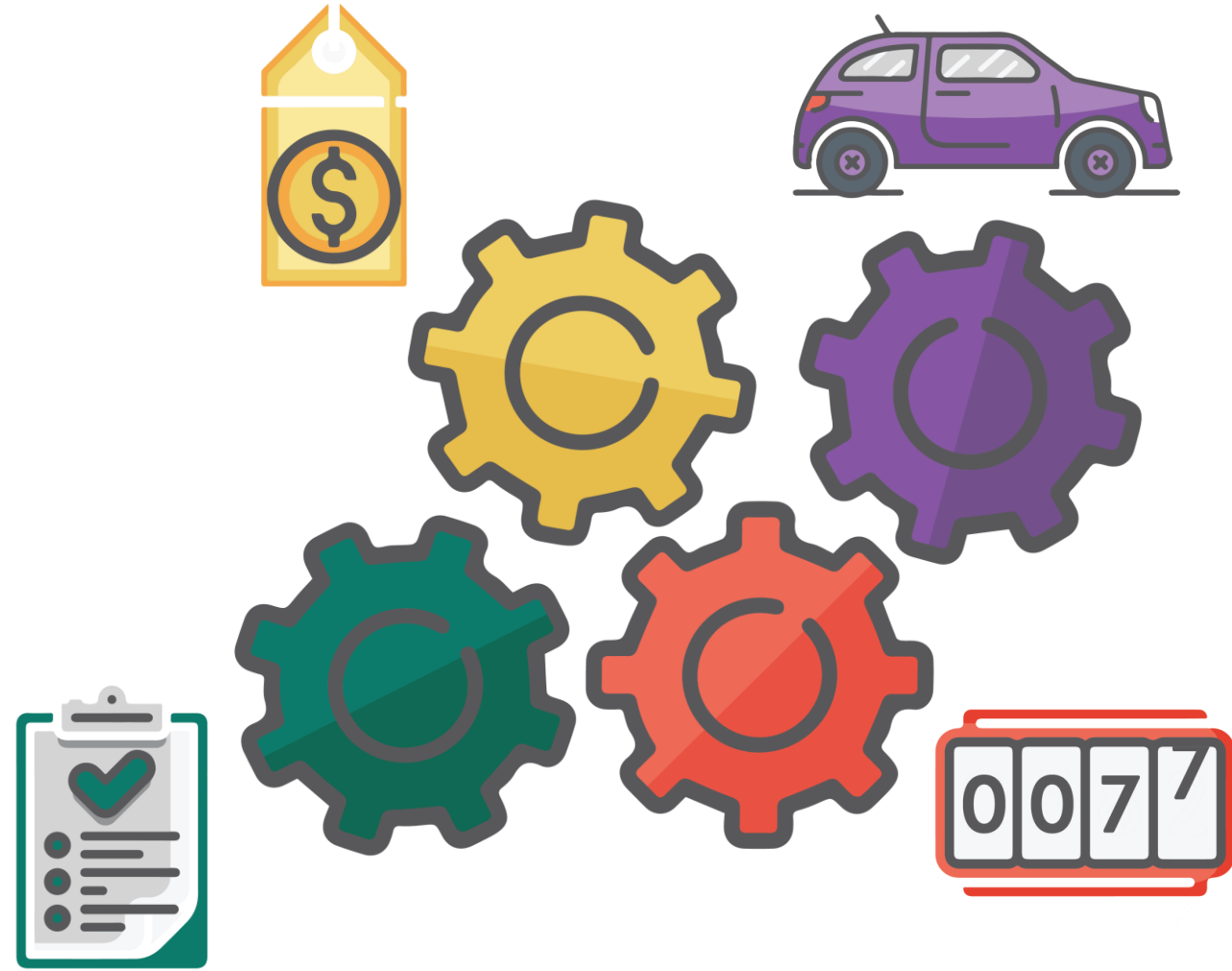


- 15 percent increase in throughput

Culmination of Efforts (continued)

Benefits of Coordinated Efforts

- Addresses population/traffic growth
- Provides seamless connectivity between the counties
- Increases travel options
- Improves quality of life



Orange County Projects

Orange County Project Summary	Cost (M)	Current Phase
SR-91 Improvements between SR-57 and SR-55	\$779	Final Design/Construction
Placentia Metrolink Rail Station	\$34.8	Final Design
Metrolink Improvements	TBD	Planning



M - Millions
SR-55 – State Route 55
TBD – To be determined

Riverside County Projects

Riverside Project Summary	Cost (M)	Current Phase
15/91 Express Transit Connector	\$220	Planning
Green River Road Bike Lane Gap Closure	\$0.14	Planning
Santa Ana River Trail	\$36.5+	Planning
SR-71/SR-91 Interchange Improvements	\$137	Construction
SR-91 Improvements East of I-15	TBD	Preliminary Engineering



SR-71 - State Route 71

Bi-County Projects

Bi-County Project Summary	Cost (M)	Current Phase
SR-241/SR-91 Tolled Express Connector	\$524	Final Design
91 Eastbound Corridor Operations Project (SR-241 to SR-71)	\$150	Environmental Revalidation
91 Westbound Improvements (SR-241 to SR-71)	TBD	Preliminary Engineering

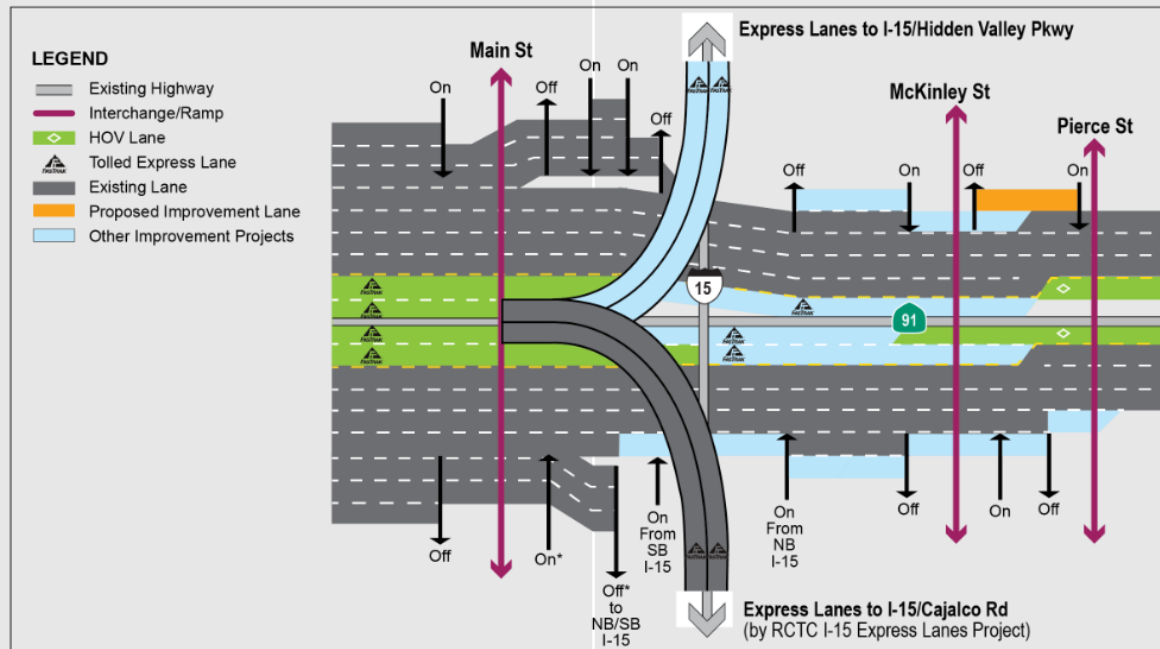


SR-241 - State Route 241

New Concept

SR-91 Westbound Auxiliary Lane

- On WB SR-91 from Pierce St to McKinley St
- Reduce weaving and merging conflicts
- Project Initiation Document in development



HOV - High-occupancy vehicle
NB - Northbound
Pkwy - Parkway
RCTC - Riverside County Transportation Commission
Rd - Road
SB - Southbound
St - Street
WB - Westbound

Project Sequencing

- Allows for streamlining of the SR-241/SR-91 Tolloed Express Connector while minimizing impacts to the SR-91 corridor
- Proposes the following sequence of project implementation:
 1. 15/91 Express Lanes Connector
 2. SR-91 Corridor Operations Project
 3. SR-71/SR-91 Interchange Improvements
 4. SR-241/SR-91 Tolloed Express Connector*



*SR-241/SR-91 Tolloed Express Connector is not dependent upon completion of SR-71/SR-91 Interchange improvements

Recommendation/Next Steps

- Receive and file as an information item
- Continue project implementation efforts
- Continue seeking external funding opportunities

