



# Measure M2 Environmental Mitigation Program Update





# Background



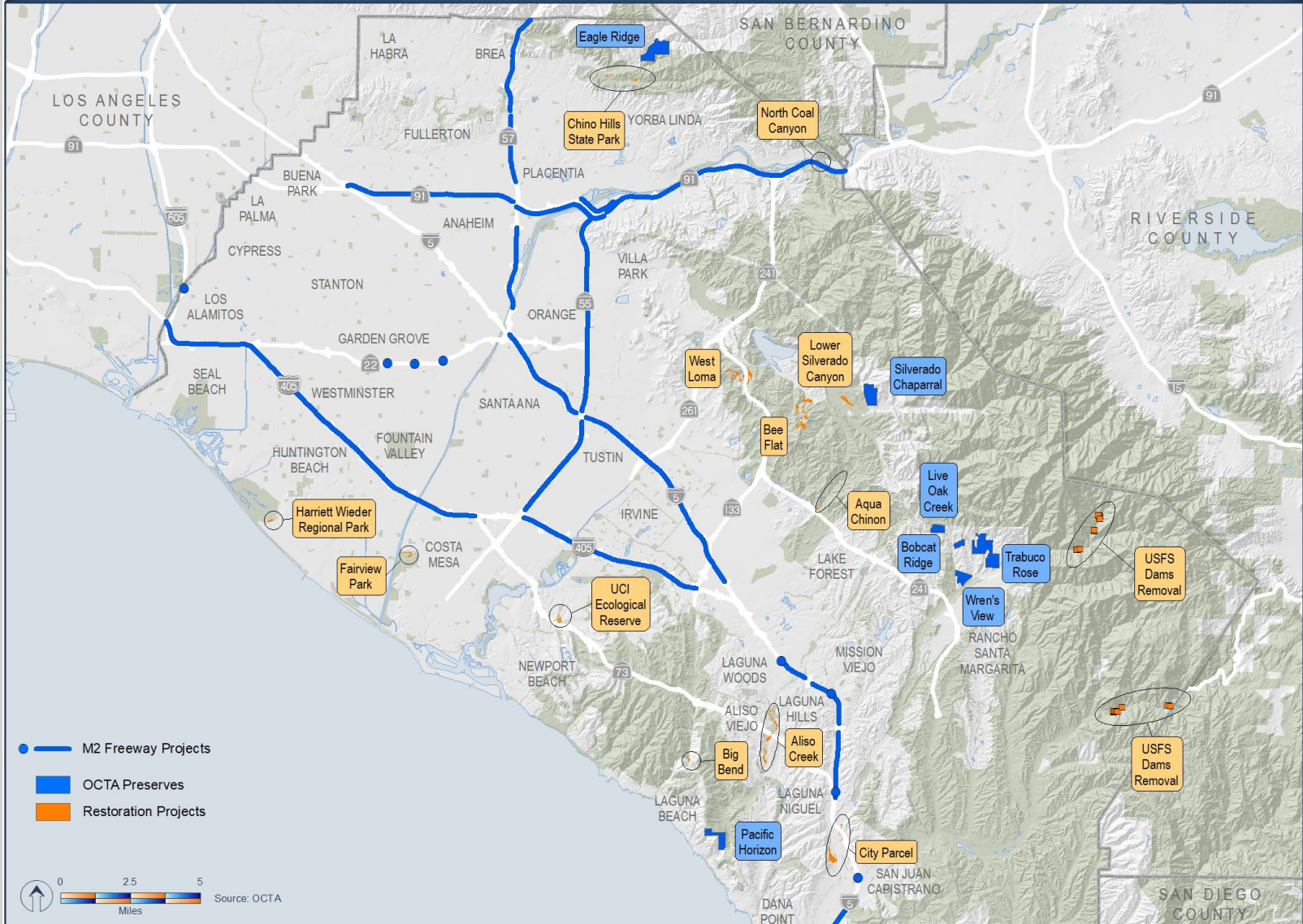
- Measure M2 (OC Go) approved - November 2006
- A component of the OC Go freeway program
- Comprehensive Freeway Environmental Mitigation Program (EMP)
  - Support of environmental community
  - Offsets biological impacts of 13 OC Go freeway projects
  - Purchase of conservation lands (Preserves)
  - Provides funding for habitat restoration



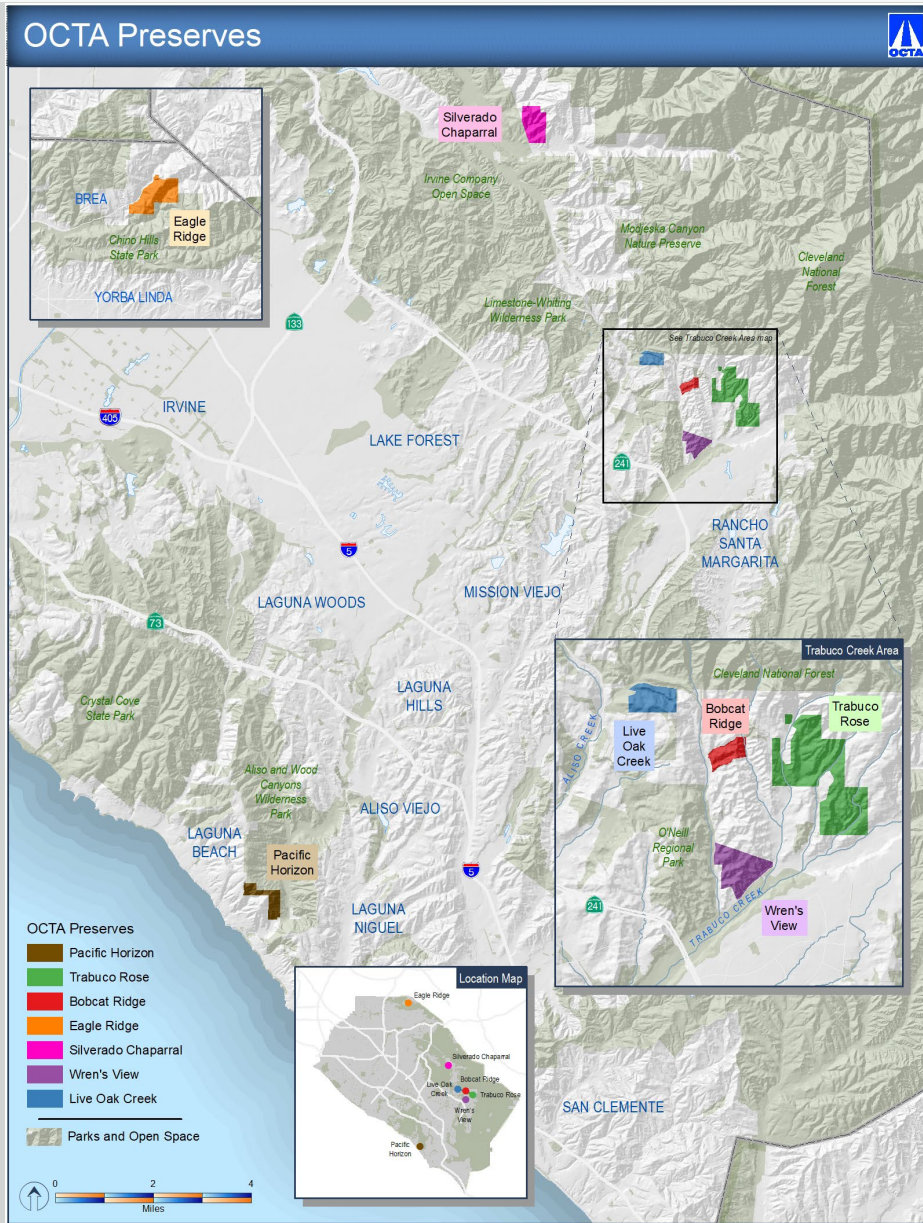
# EMP Projects and Mitigation



## OCTA Preserves and Funded Restoration Projects







- Seven properties
- 1300 acres
- Purchased between 2011 and 2014
- Strategic locations





## Wren's View

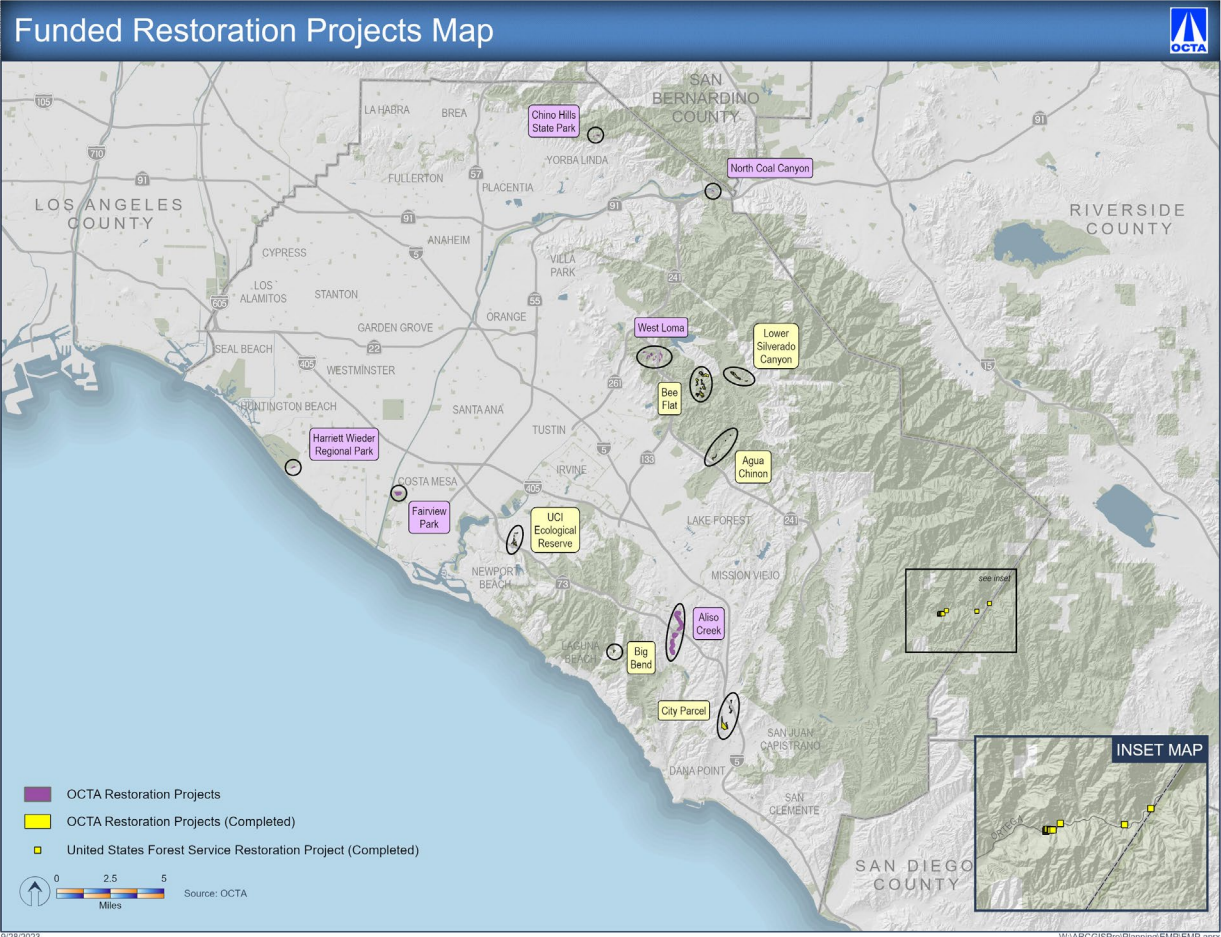


## Trabuco Rose





# OCTA Restoration Projects



- 12 projects
- About 350 acres
- Funded between 2011 and 2019
- Distributed throughout County

9/28/2023

W:\ARC\GIS\Pro\Planning\EMP\BMP.aprx





# UCI Restoration Project



UCI – University of California, Irvine







# Conservation Plan Structure



- Natural Community Conservation Plan/Habitat Conservation Plan
- Environmental documents
  - EIR/EIS
- Streamlined permitting through partnerships with:
  - Caltrans
  - State and federal wildlife agencies
- Nationally recognized by FHWA

EIR – Environmental Impact Report

EIS – Environmental Impact Statement

Caltrans – California Department of Transportation

FHWA – Federal Highway Administration





# Clean Water Act Programmatic Permitting



- Clean Water Act permits
- Streamlined permitting through partnerships with:
  - Caltrans
  - State and federal regulatory agencies



# EMP Status Update



- Fire management plans
- Completing restoration projects
- Southern California Edison coordination
- Preserve monitoring and management
- EMP Endowment Fund
- Riding and hiking tours