

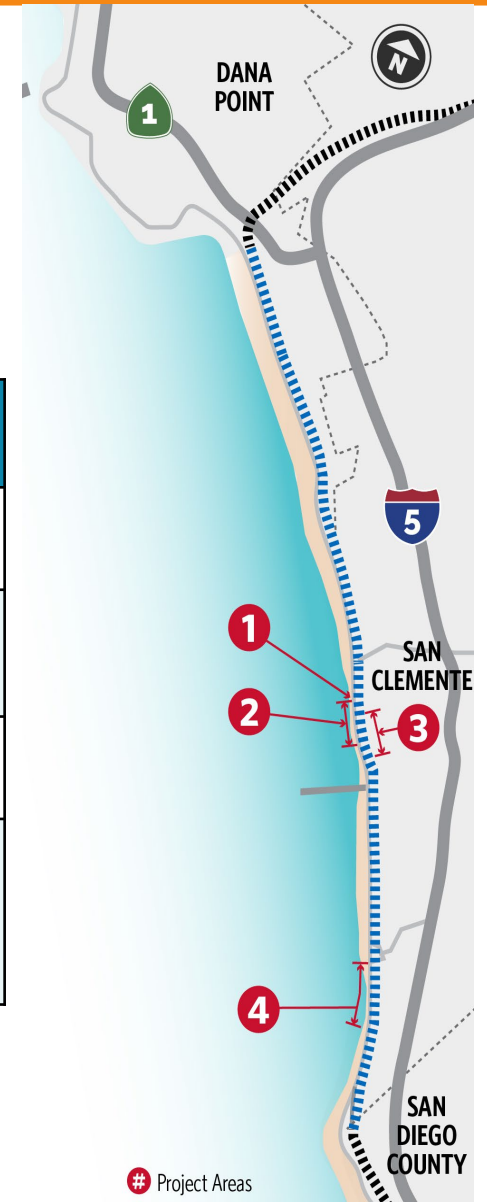
**Update on Emergency Need for Railroad Track
Stabilization in the Vicinity of Mile Post 203.80 to 204.40
and 206.00 to 206.70 on the Orange Subdivision**

Coastal Rail Stabilization Priority Project

- Four priority reinforcement areas were identified in January 2024
- Proposed solutions evaluated at a preliminary design level considering different materials, performance, costs, methods, and schedule

Area	Location (MP)	Challenge	Proposed Solutions
1	203.80 - 203.90	Ongoing deterioration of existing riprap protection	Riprap repair (900 tons/600 CY) followed by sand nourishment
2	204.00 - 204.40	Erosion - no beach at high tide and direct wave attack damaging existing riprap protection	Riprap repair (6,750 tons/4,500 CY) followed by sand nourishment
3	204.07 - 204.34	Steep bluffs with high potential for failure that could impact rail infrastructure	1,400-ft catchment structure
4	206.00 - 206.10 206.42 - 206.70	Near San Clemente State Beach - erosion exposing areas of limited to no riprap protection	Riprap repair (2,100 tons/1,400 CY) and 1,200-ft shoreline protection structure followed by sand nourishment

MP – Mile Post
CY – Cubic Yard



Areas 1 and 2 Riprap Repair Activities

- All construction activities have been completed
- Provided responses to the California Coastal Commission (CCC) on Emergency Coastal Development Permit (eCDP) conditions of approval for Areas 1 and 2 which included:
 - Revetment as-built plans
 - Sand and revetment monitoring plans
 - Sand nourishment update
 - California State Transportation Agency commitment letter to perform potential railroad relocation analysis
 - Correspondence on habitat mitigation and monitoring plan
 - Nesting bird monitoring and avoidance memorandum (April 23 and April 28, 2025 surveys)
- Staff is addressing CCC Notice of Incomplete letter which requested additional construction data and sand nourishment schedule update



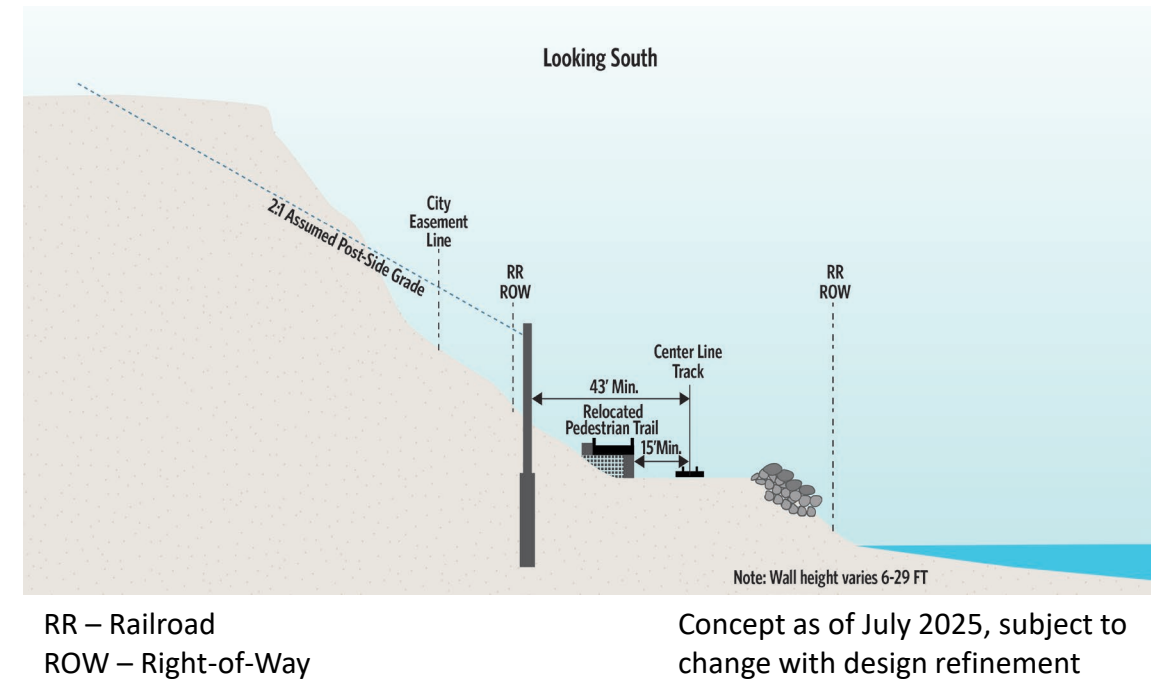
North Beach and Area 1 Initial Sand Nourishment

- Initial sand nourishment is part of the larger effort to place 240,000 CY of sand nourishment in Areas 1 and 2, as approved by the CCC
- Orange County Transportation Authority (OCTA) utilized an inland sand source (Garnet Pit) and placed ~2,500 CY of sand in Area 1 and North Beach, outside of the United States Army Corps of Engineers' jurisdiction
- This initial sand was limited to be placed above the mean high tide line and up to a permitted natural berm elevation
- The placement was completed on September 10, 2025, and the contractor has demobilized
- Coordination with the Orange County Water District on the availability of Prado Dam basin material will continue



Area 3 Mariposa Catchment Wall Activities

- California Transportation Commission allocated \$92.231 million
- Executed contract with the design-build contractor, Condon Johnson & Associates (CJA)
 - Review of 100 percent design package complete and CJA resolving final comments
 - Structural steel column mill fabrication in September 2025
 - Potholing activities completed on September 12, 2025
 - Construction activities (pedestrian bridge pier removal, site clearing and grubbing) started on September 15, 2025
- Cooperative agreement for construction support executed with the Southern California Regional Rail Authority
- CCC has no objections to wall aesthetics and trail plan is under final review
- CCC approved CDP amendment for soil nail shoring and Verdura block wall on September 11, 2025



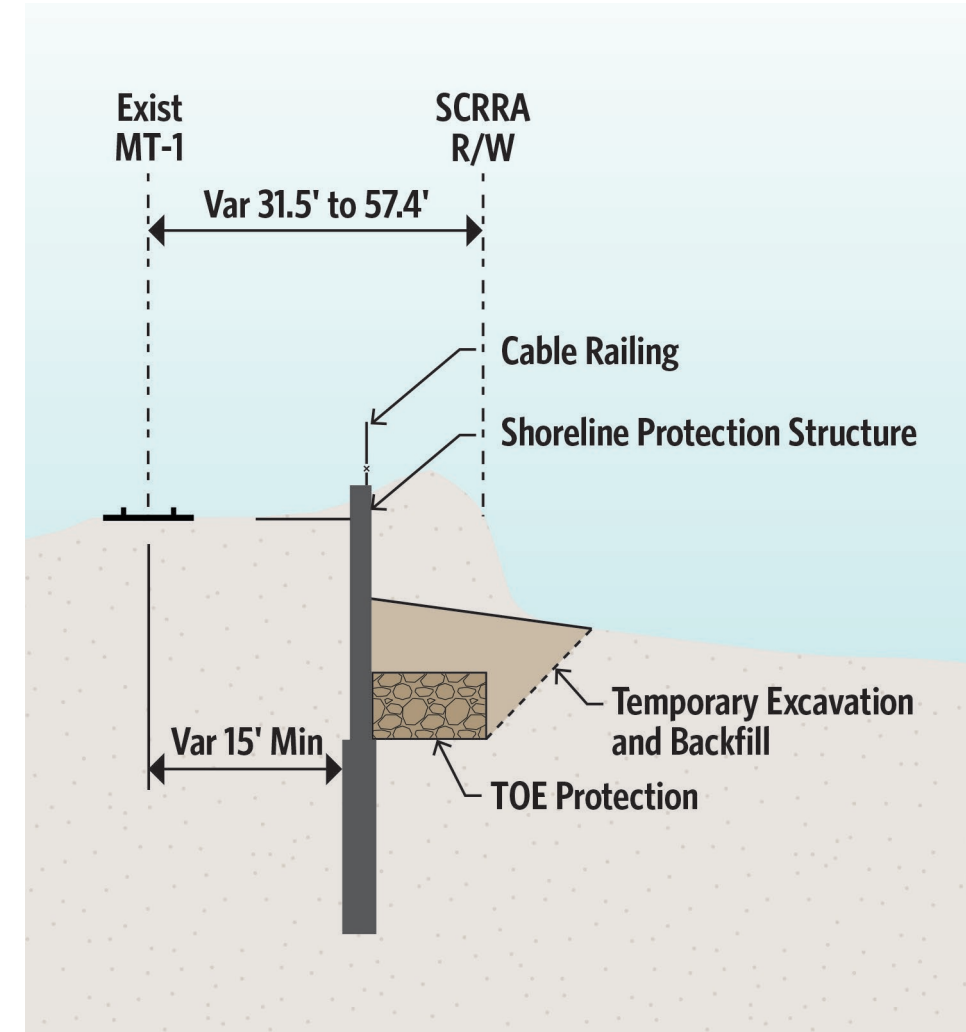
Area 3 Catchment Wall



Concept Rendering:
CCC has no objection to this design

Area 4 Shoreline Protection Structure Activities

- CCC does not recognize Area 4 as an emergency; no eCDP will be issued
- Resumed prior efforts to complete the pending CDP from 2024 and submitted responses on June 30, 2025, seeking opportunities to expedite review and approval
- Resubmitted the draft coastal erosion modeling report to address CCC comments
- CCC approved a CDP waiver for geotechnical investigation testing on August 15, 2025
- Geotechnical field investigations are planned in October 2025 for validation of conceptual design
- CCC to consider Area 4 CDP at future CCC meeting (date to be determined)



Area 4 – Shoreline Protection Structure

Estimated Schedule

North Beach and Area 1 Initial Sand Nourishment

Estimated Number of Months	1	2	3	4	5	6	7	8	9	10
Contractor Procurement & Sand Nourishment (3 Months)										

Area 3 Mariposa Catchment Wall Activities

Estimated Number of Months	1	2	3	4	5	6	7	8	9	10	11	12
Contract Duration												
Notice to Proceed (June 17, 2025)												
Final Design	2 Months											
Steel Procurement		4 Months										
Construction			10 Months									

Area 4 Shoreline Protection Structure Construction

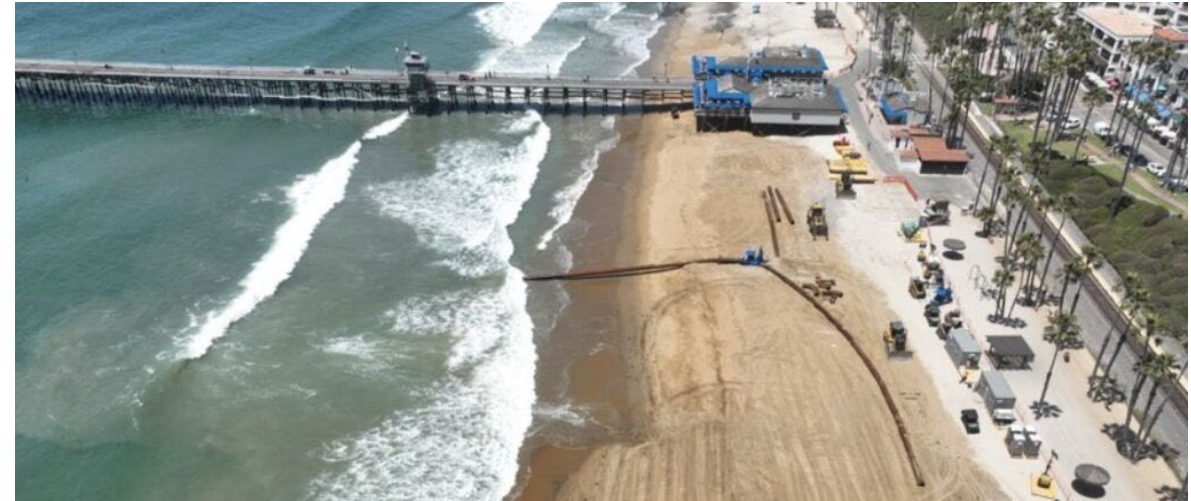
Estimated Number of Months	1	2	3	4	5	6	7	8	9	10
Area 4 - Shoreline Protection Structure	8 Months									

North Beach and Area 1 initial sand nourishment is complete

Areas 1, 2, and 4 overall sand nourishment schedule is TBD depending on environmental and permit approvals

Sand Nourishment

- OCTA is securing federal environmental clearance for offshore sand source dredging and placement of sand for Areas 1, 2, and 4
- OCTA is utilizing previous studies by the City of San Clemente to streamline the process
- Collaborative city offshore sand exploration is underway
- Marine environmental studies for beach nourishment are underway
- Preliminary schedule (subject to change):
 - Environmental and final design approvals: Anticipated Q4 of 2026
 - Procure sand nourishment contractor: Anticipated Q4 of 2026
 - Bids due date: Anticipated Q4 of 2026
 - Contract award and notice to proceed: Anticipated Q1 of 2027
 - Project completion: Anticipated in 2027



Pictures from San Clemente Sand Replenishment Project

Recommendation

Reaffirm Resolution No. 2025-068 and authorize the Chief Executive Officer to take all necessary actions to address the emergency need for railroad track stabilization in the vicinity of Mile Post 203.80 to 204.40 and 206.00 to 206.70 on the Orange Subdivision, and to return to the Board of Directors, as required, to report on the status thereof.