

Anaheim Canyon Metrolink Station Improvement Project Update

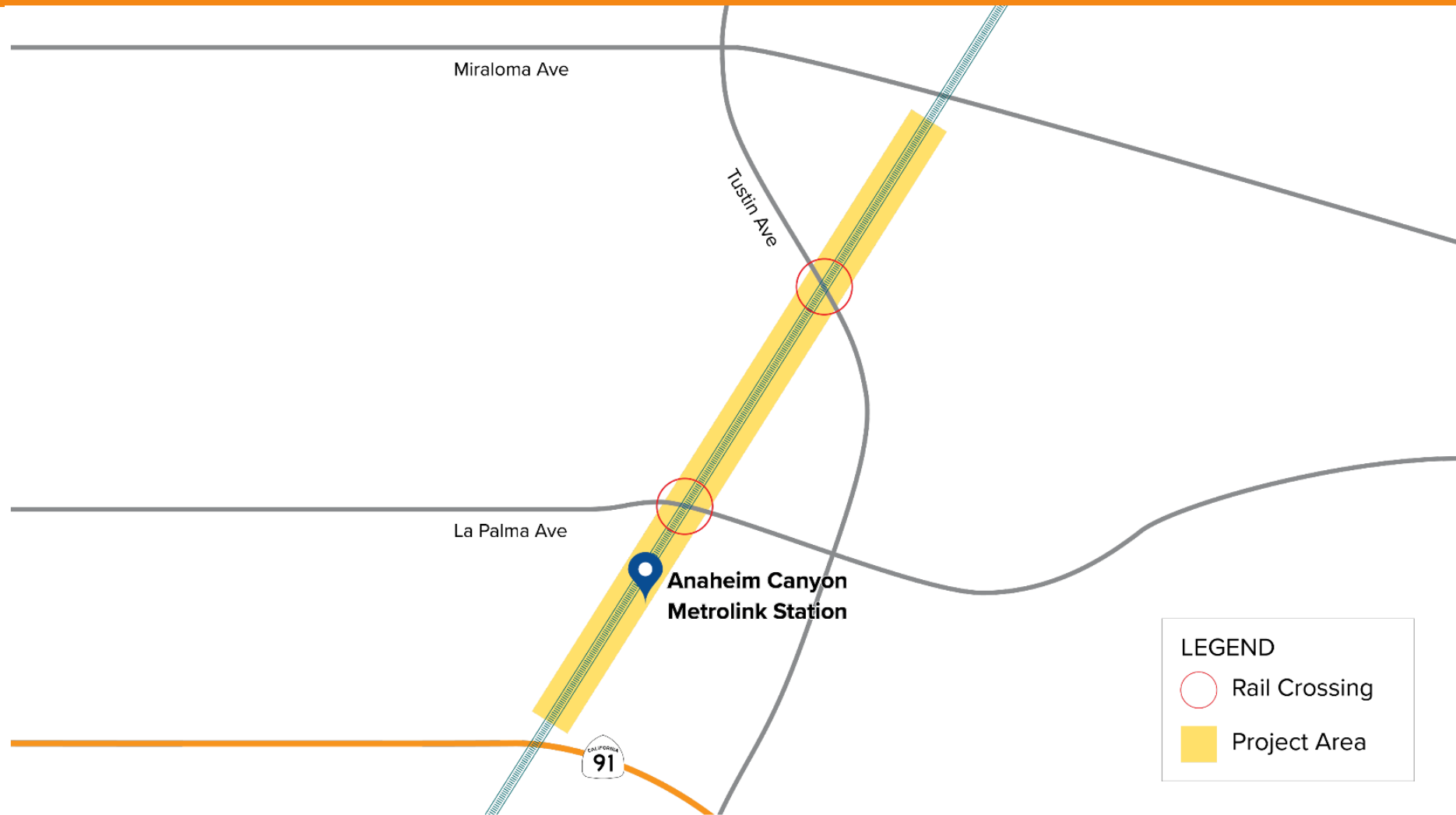
Partnerships



METROLINK




Project Site



Project Improvements

Overview

 3,400 linear feet of new track

 New platform and extension of existing platform

 Improvements to crossings

 New benches, shade structures, ticket machines

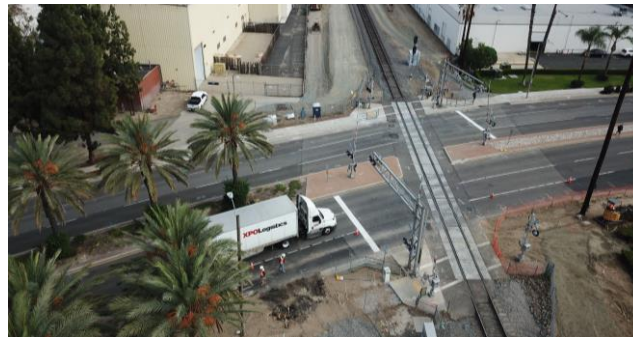
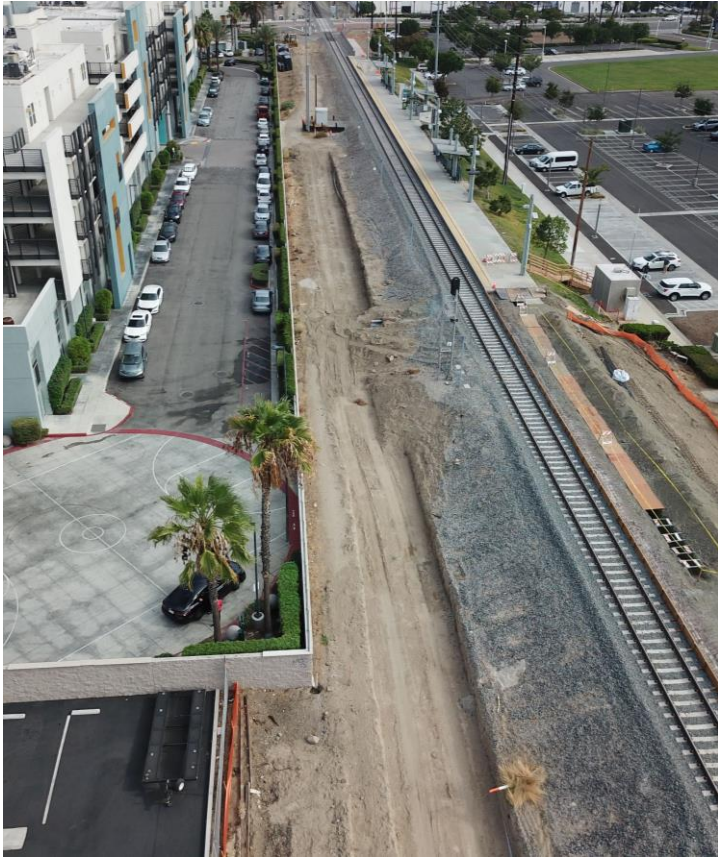


Rendering of station improvements

Construction Site 9/15/21



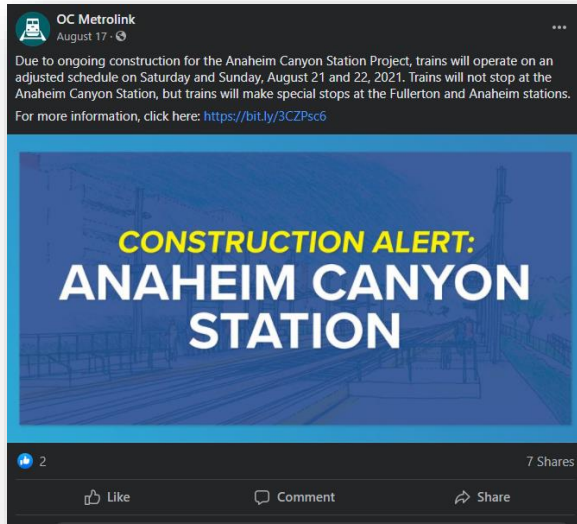
Schedule



- Absolute Work Windows in May 2022 and June 2022
- Complete street closure at Tustin Avenue and La Palma Avenue crossings on separate weekends

Public Outreach

- Project webpage
- Flyers and postcards
- Virtual community meetings
- Business outreach



Contact
Contact
anahe
(800)

