

# **OC Streetcar Project Quarterly Update**

# Construction—Segment 1



- Pacific Electric Right-of-Way (PEROW)
  - Installation of overhead contact system (OCS) pole foundations, communication duct banks, and foundation for three soundwalls
  - Fairview Street grade crossing completed, and preparations began for Fifth Street grade crossing
  - Electrical conduits installed near Westminster Avenue to serve traction power substations

# Westminster Bridge



- Substantially complete, preparations underway for rail installation.



# Santa Ana River Bridge



- Substantially complete, preparations underway for rail installation.



# Station Stops



Fairview Crossing and Station Stop



Raitt Station Stop

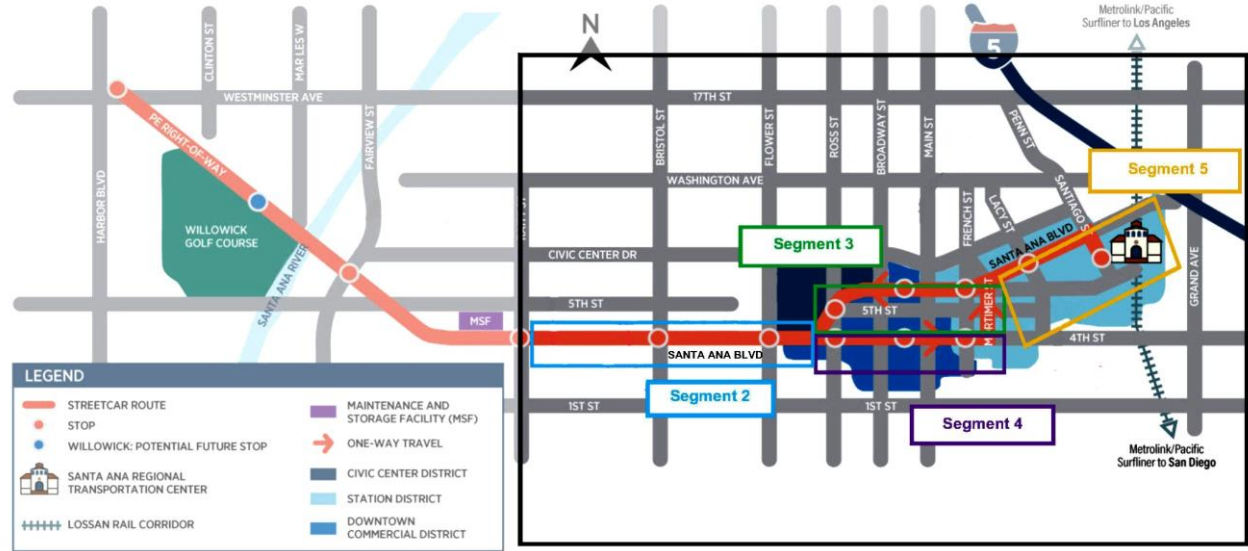


# Maintenance and Storage Facility (MSF)



- On-site utilities, foundation slab, wheel truing and service and inspection pits.
- Car wash building slab completed.

# Construction—Segments 2 Through 5



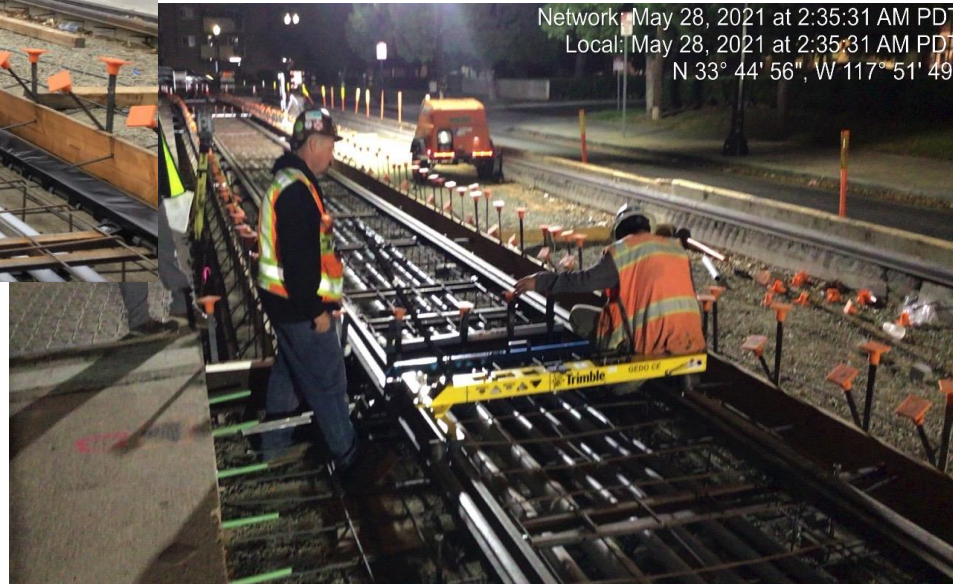
- Construction of westbound embedded track on Santa Ana Boulevard between Bristol Street and Raitt Street is complete.
- Construction of eastbound embedded track on Santa Ana Boulevard between Raitt Street and Bristol Street is underway.
- Embedded track placed on Santa Ana Blvd intersections across Broadway and Main Street, and along Mortimer Street from Fourth to Sixth Streets.



# Track Installation



Mortimer Street



Mortimer Street

Raitt Street Crossing





# Upcoming Construction Milestones

- In-street embedded track
- PEROW ballasted track
- OCS and traffic signal pole foundations
- MSF slabs and walls
- Station stop platforms
- Delivery and placement of traction power substations

# Vehicles

- Cars 1-7 of the eight S-700 streetcar vehicles are undergoing final equipping of remaining vehicle components.
- Car 8 is in final assembly and then will proceed to static and dynamic testing.
- First article inspection conducted for the Computer Aided Dispatching/Automated Vehicle Location system.
- Negotiations are ongoing with Siemens regarding options for vehicle storage to align with the availability of the project infrastructure needed to accept and test the vehicles.





# Vehicle Interior





# Outreach

- Bilingual Door-to-Door Notices
- Field Meetings
- Downtown Business Associations
- Eat Shop Play



## CONSTRUCTION ALERT

**WHAT:** Full closure of two, two-block segments on 4th Street. Drivers will be detoured; however, sidewalks will be open to access all businesses.

**WHEN:** Stage 1 is starting as early as June 2021. Crews will be working from 7 a.m. to 7 p.m., but detours will be in place during the day and night.

**WHERE:** On 4<sup>th</sup> Street, from Mortimer Street to Ross Street.

- Stage 1: From Mortimer Street to Spurgeon Street and from Main Street to Broadway
- Stage 2: From Spurgeon Street to Main Street and from Broadway to Ross Street

OCTA's Eat Shop Play program supports businesses located along the future OC Streetcar route. We offer marketing assistance to increase exposure and foot traffic during construction. Participation is free, please reach out to us to participate.

We apologize for any inconveniences and appreciate your understanding. For any questions about the OC Streetcar project, please contact us.

Celene's Bridal offers beautiful gowns and suits for those special, once-in-a-lifetime moments!

222 W 4th St, St B, Santa Ana, CA 92701 | (714) 277-8162

OC STREETCAR  
octa.net/eatshopplay

## EAT SHOP PLAY

Breakfast served all day at Café Cultura. Place an online order now!

(714) 662-2002 | <http://cafecitocultura.com/>  
324 W 4th St, B, Santa Ana, CA 92701



## CONSTRUCTION ALERT

**WHAT:** Full intersection closures for track construction. Access to Hall of Administration and Board of Supervisors parking will be maintained at all times, there will be no impact to employees entering and exiting the Hall of Administration parking. Please see map on the second page of this notice.

**WHEN:** The closure will begin Friday, May 14, at 7 a.m. and end on Monday, May 17 at 5 a.m. Construction schedules depend on weather and may be subject to change.

**WHERE:** The following intersections will be closed:

- Santa Ana Boulevard and Broadway
- Santa Ana Boulevard and Main Street

For any questions about the OC Streetcar project, please contact OCstreetcar@octa.net or (844) 746-6272.

## CLOSURE AREA

