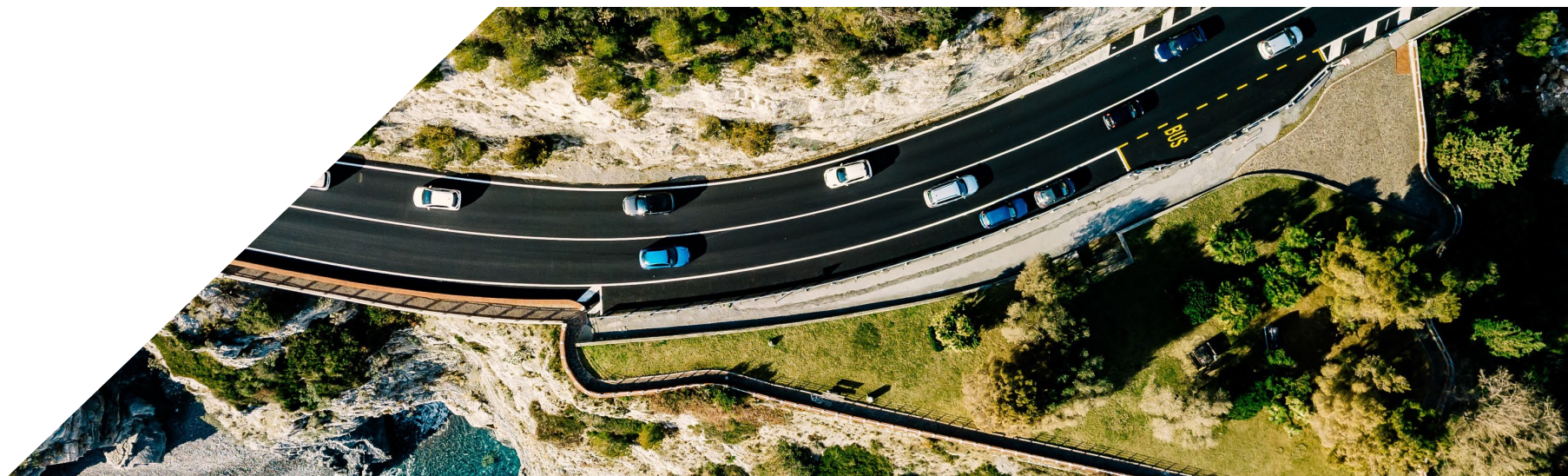


CALIFORNIA TRANSPORTATION PLAN 2050



June 2021

PRESENTED BY
Jeanie Ward-Waller



WHAT IS THE CTP 2050?

- ◆ The California Transportation Plan 2050 (CTP) is the State's long-range transportation plan that utilizes **technical modeling and research**.
- ◆ The plan is meant to be used as a guidance document; it helps us imagine what it takes to **move the needle**.

CTP 2050 DEVELOPMENT TIMELINE



CTP 2050 GOALS



CTP 2050 RECOMMENDATIONS

-  1 Expand access to safe and convenient active transportation options
-  2 Improve transit, rail, and shared mobility options
-  3 Expand access to jobs, goods, services, and education
-  4 Advance transportation equity
-  5 Enhance transportation system resiliency
-  6 Enhance transportation safety and security
-  7 Improve goods movement systems and infrastructure
-  8 Advance Zero-Emissions Vehicle (ZEV) technology and supportive infrastructure
-  9 Manage the adoption of connected and autonomous vehicles
-  10 Price roadways to improve the efficiency of auto travel
-  11 Encourage efficient land use
-  12 Expand protection of natural resources and ecosystems
-  13 Strategically invest in state of good repair improvements
-  14 Seek sustainable, long-term transportation funding mechanisms

CTP 2050 MODELING



- ◆ The CTP 2050 utilizes technical modeling to explore the **impacts** of various transportation and land use policies.
- ◆ **Informs readers** about what it would take to **achieve the CTP 2050 goals**.
- ◆ Helps **identify what consequences** might arise based on the implementation of the recommended strategies.

CTP 2050 SCENARIOS



2050 BASELINE

- Regional Transportation Plans and Sustainable Communities Strategies
- Programmed System Improvements
- High-Speed Rail Business Plan
- CARB Scoping Plan



TRANSPORTATION FOCUS

- 2050 Baseline
- Local Transit
- 2018 Rail Plan Vision
- Reduce Last-Mile Deliveries
- Pricing
- HOV 3+
- Connected and Autonomous Vehicles
- Mobility as a Service



LAND USE FOCUS

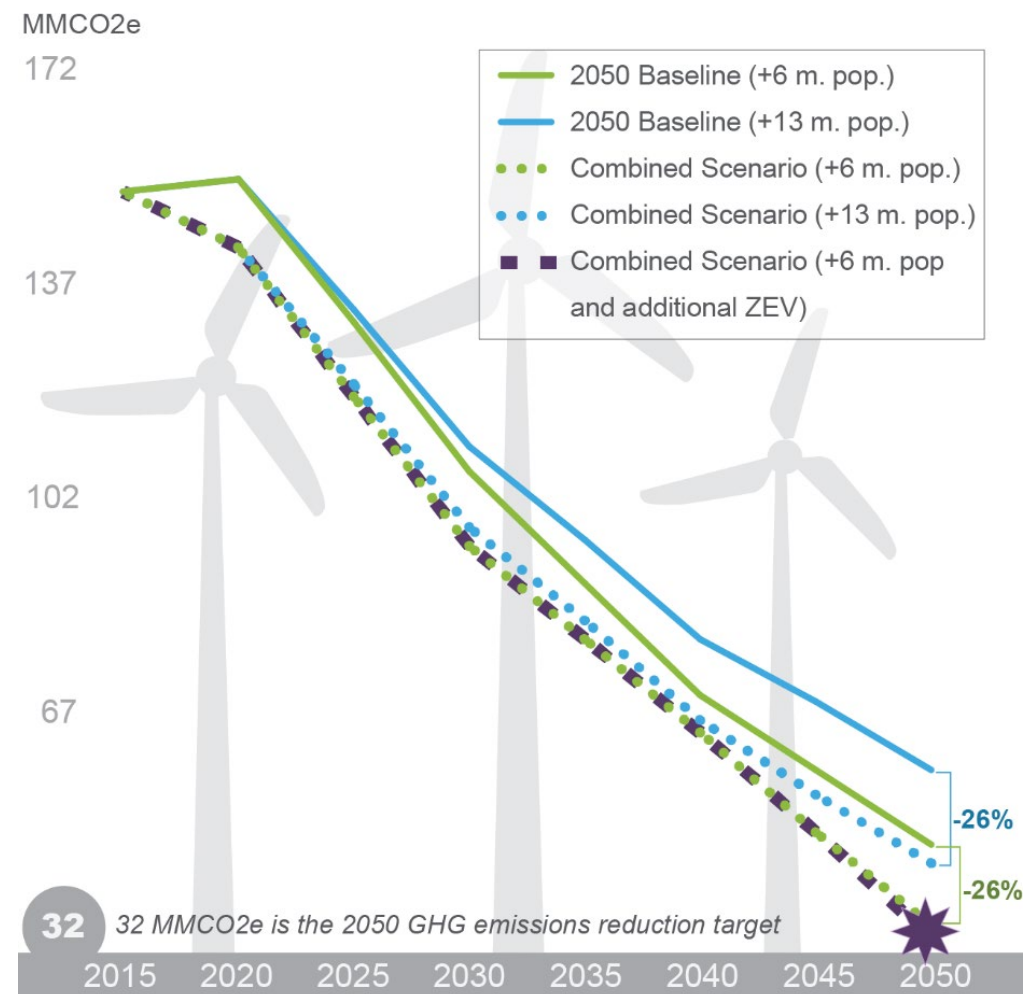
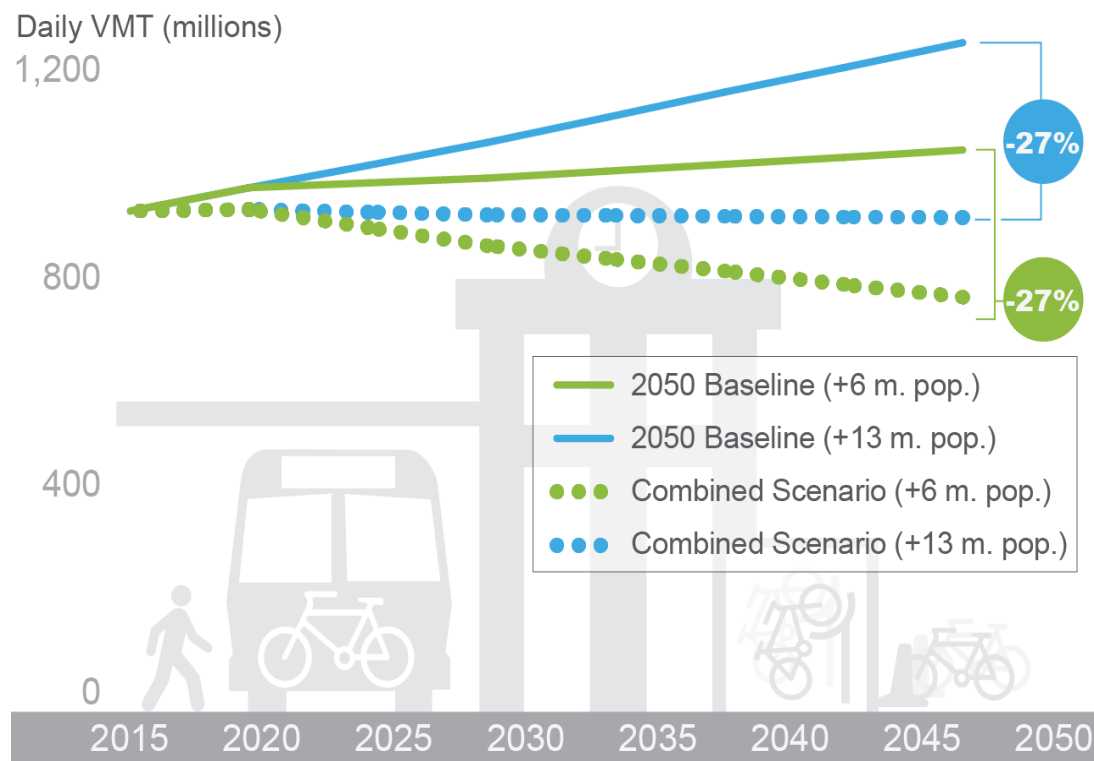
- 2050 Baseline
- Increased Future Land Use Density



COMBINED

- Transportation Focus
- Land Use Focus
- Telework

EXECUTIVE ORDERS N-79-20 & N-19-19



CTP 2050 DRAFT CHANGES



- ◆ Stakeholders helped refine discussion within the plan – **the document was revised to:**
 - ◆ Incorporate discussion for the recently signed EOs N-79-20 and N-19-19;
 - ◆ Elaborate on pricing policies discussion; and
 - ◆ Further emphasize unconstrained nature of the CTP regarding the regional transportation planning process.

DISTRICT ENGAGEMENT

- ◆ Caltrans District 12 **partnership** is crucial.
- ◆ Orange County transportation projects and initiatives are **essential to achieving** our statewide goals:
 - ◆ OC Streetcar Project
 - ◆ I-5 Managed Lanes Project
 - ◆ Zero emission transit fleet
 - ◆ Bicycle corridor improvement program



CTP NEXT STEPS

- ◆ The CTP is ongoing and must continue to provide guidance for **state**, **regional**, and **local** transportation policies.
- ◆ Continued engagement with our partners is the key to successfully **implementing** the CTP.
- ◆ Coordinate efforts to identify resources to **support statewide projects**.



QUESTIONS?