



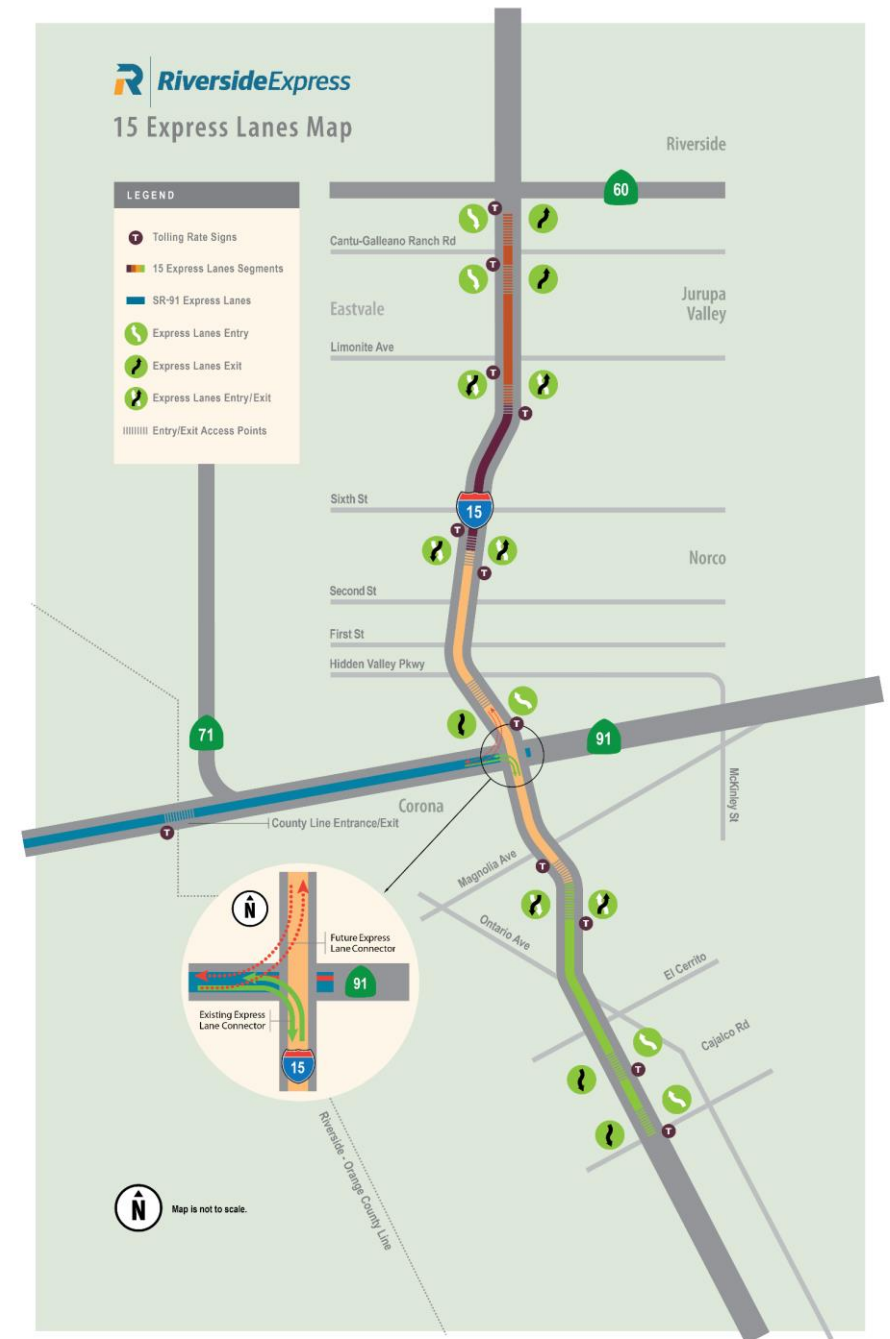
RIVERSIDE
COUNTY
TRANSPORTATION
COMMISSION

15 EXPRESS LANES OPENING



Jennifer Crosson, Toll Operations Manager

- 15 miles long
- Four toll segments
- Multiple access points
- 91 Express Connector
- Future north connector, 2023



Dynamically Priced

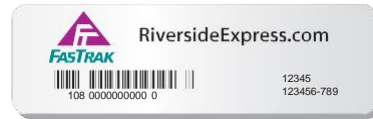
- Based on traffic volume and density
- On road sensors and algorithm
- Could change as frequently as every 5 minutes
- Minimum toll rates adopted by Commission
- Constant monitoring



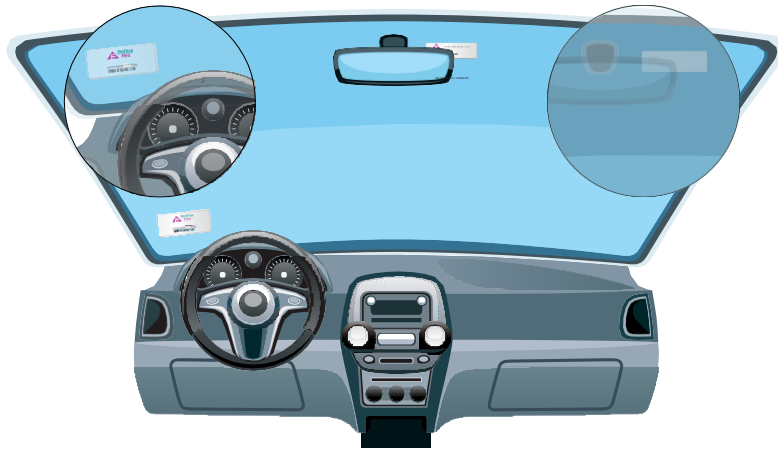
Transponder Required



FasTrak Flex
Switchable (\$15)



Interior Sticker (\$5)



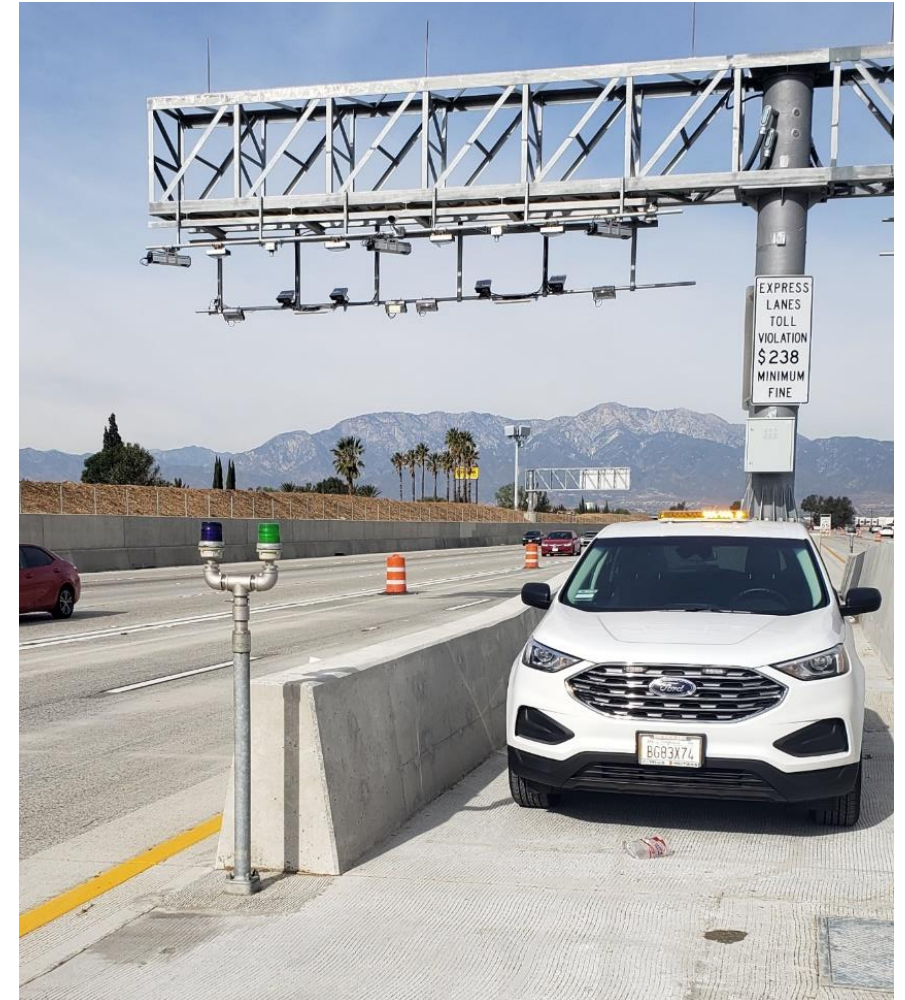
External Headlamp (\$5)



HOV3+ Discount

100% HOV3+ (at least three months)

- Reduced to 50% if speed in the express lanes drop below 60 mph three or more times in a thirty-day period



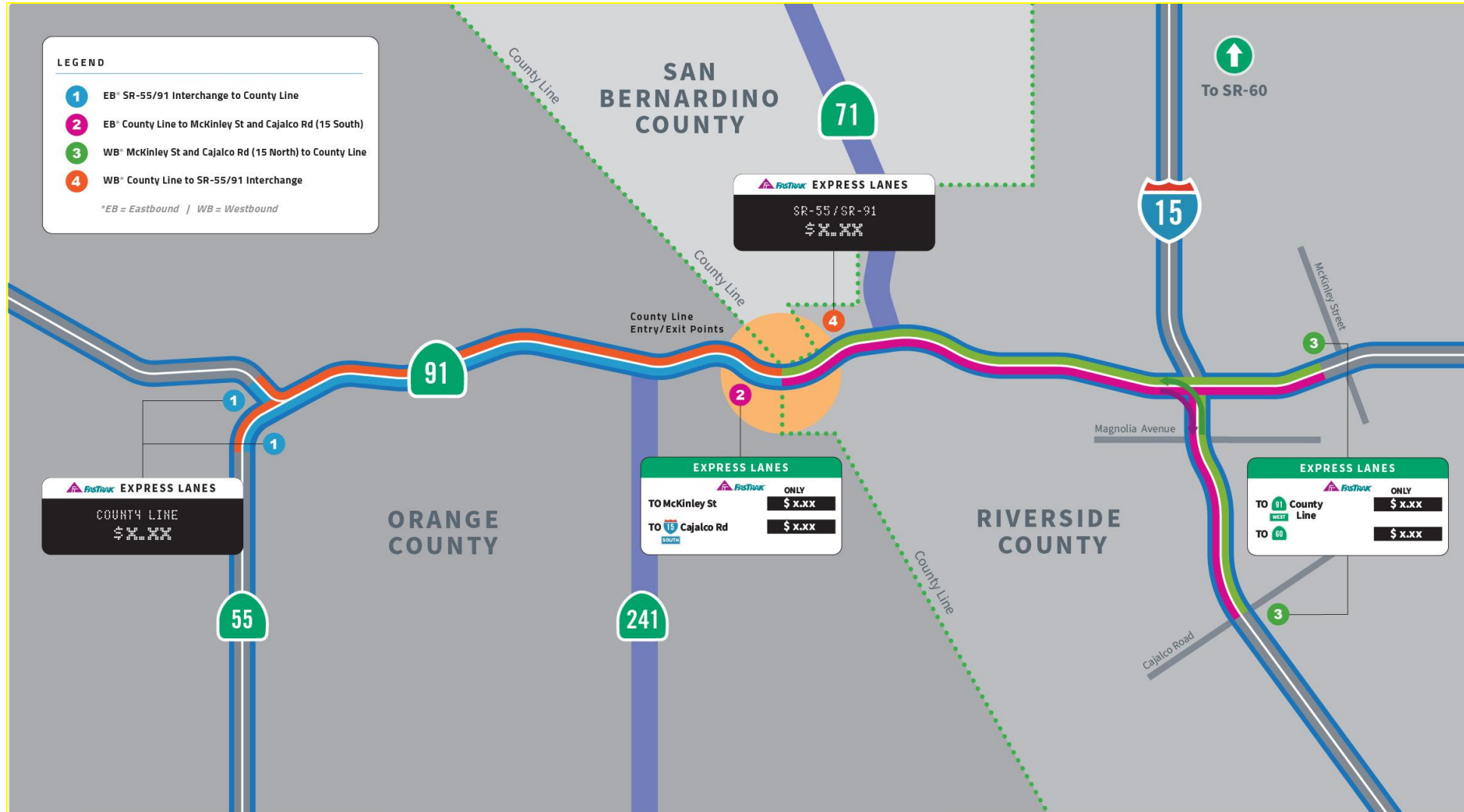
Clean Air Vehicle Discount

- 15% discount
- Register vehicle at account-holding agency
- Sticker transponder installed and matched to approved plate





Changes to the 91 Express Lanes



Facilities

Walk-in Center

301 Corporate Terrace Circle



Regional Operations Center

291 Corporate Terrace Circle

Facilities and Maintenance

120 N. Joy Street





Customer Service

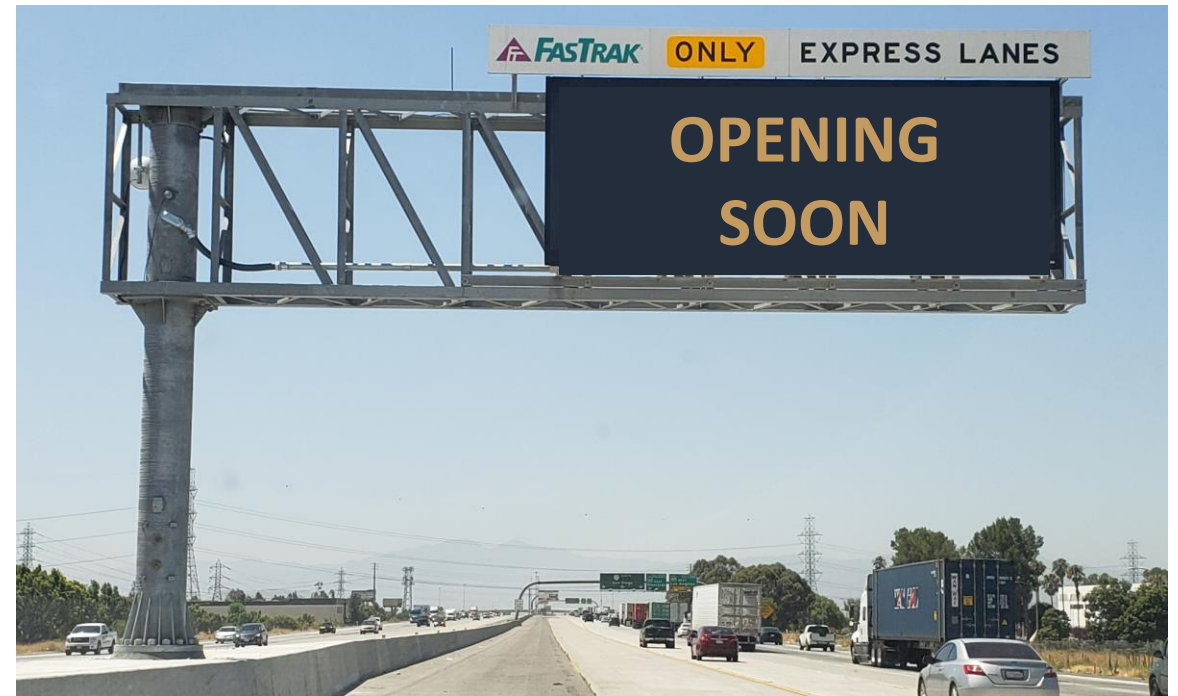
- Call Center
- Walk-in Center
- Transponder fulfillment
- Mail processing
- Account management
- Violation processing



Traffic Operations

- Incident management
- Sign management
- Dynamic pricing
- Toll System monitoring

Revenue Commencement



Questions??