

THE 2020–2045 REGIONAL TRANSPORTATION PLAN/  
SUSTAINABLE COMMUNITIES STRATEGY OF THE  
SOUTHERN CALIFORNIA ASSOCIATION OF GOVERNMENTS



# About the Plan

SoCal Today

A Path to Greater  
Access, Mobility &  
Sustainability

Paying Our  
Way Forward

Measuring Our  
Progress

Looking  
Ahead



# Goals



# Laws That Guide the Plan



## DEVELOPING A REGIONAL TRANSPORTATION PLAN

Required by federal law to prepare and update a long-range transportation plan

## KEEPING UP WITH CLEAN AIR ACT REQUIREMENTS

Meet federal transportation conformity requirements

## MONITORING SYSTEM PERFORMANCE

Required by federal law to conduct transportation system performance planning/monitoring

## DEVELOPING A SUSTAINABLE COMMUNITIES STRATEGY

State law requires the integration of land use and transportation strategies

## HITTING SPECIFIC TARGETS FOR GREENHOUSE GAS EMISSIONS

California Air Resources Board sets emission reduction targets for the region



# How We Got Here – Local Engagement



One-on-One Engagements With  
Local Jurisdictions and County  
Transportation Commissions



Regional Planning Working Groups and  
Community Based Organizations



Public Workshops, Street Teams,  
Tele-Town Hall, Advertisements  
and Survey

# Planning Process



Fall 2017 to  
Spring 2019

**Update Data**  
(through 2045, the new horizon year)

Summer  
2019

Transportation Financial Analysis

Issues Exploration

Update Planning Assumptions

Land Use/Transportation Scenarios Development

Fall  
2019

Compile/Analyze Draft Connect SoCal

Develop Program Environmental Impact Report  
(PEIR)

Winter  
2019-2020

Release Draft Connect SoCal & PEIR

Public Outreach & Comment Period

April  
2020

Approve Draft Connect SoCal & PEIR

## SoCal Today

About the Plan

A Path to Greater  
Access, Mobility &  
Sustainability

Paying Our  
Way Forward

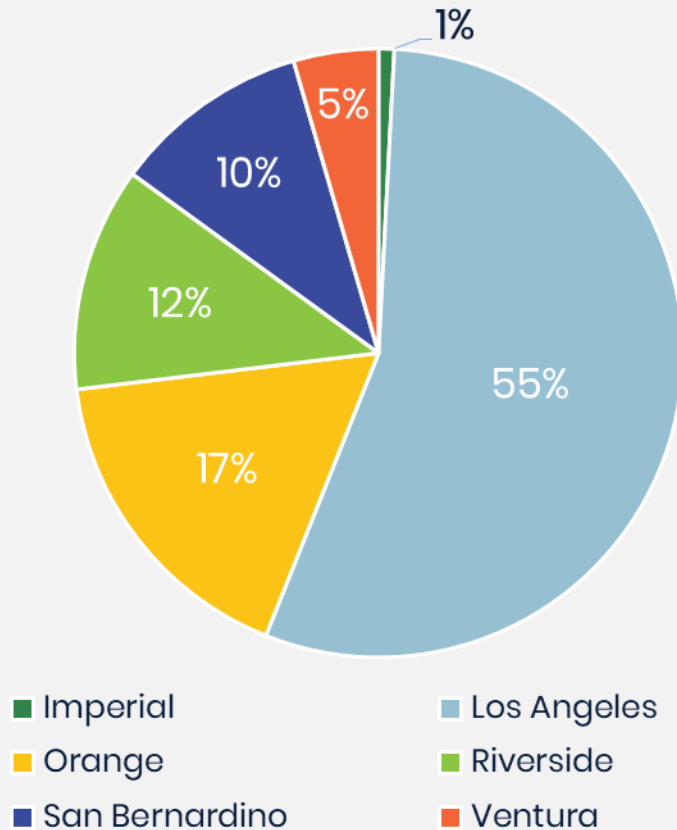
Measuring Our  
Progress

Looking  
Ahead

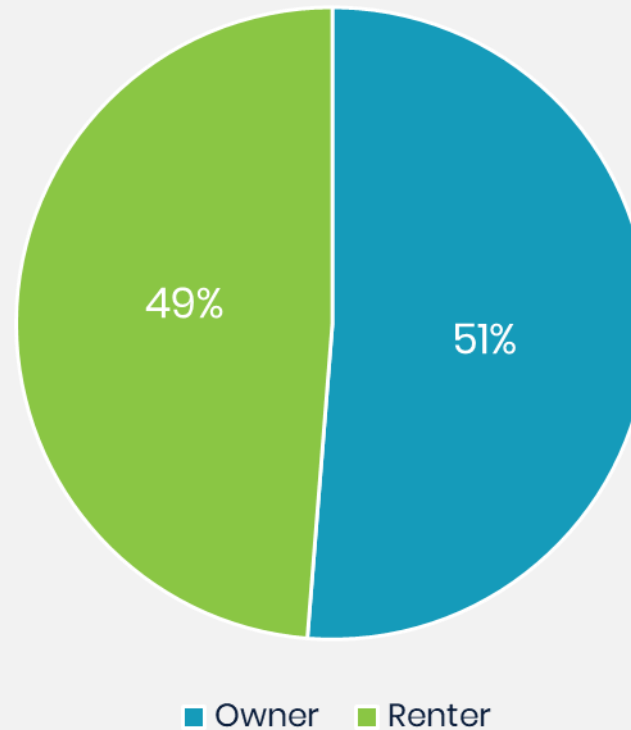


# Where We Live

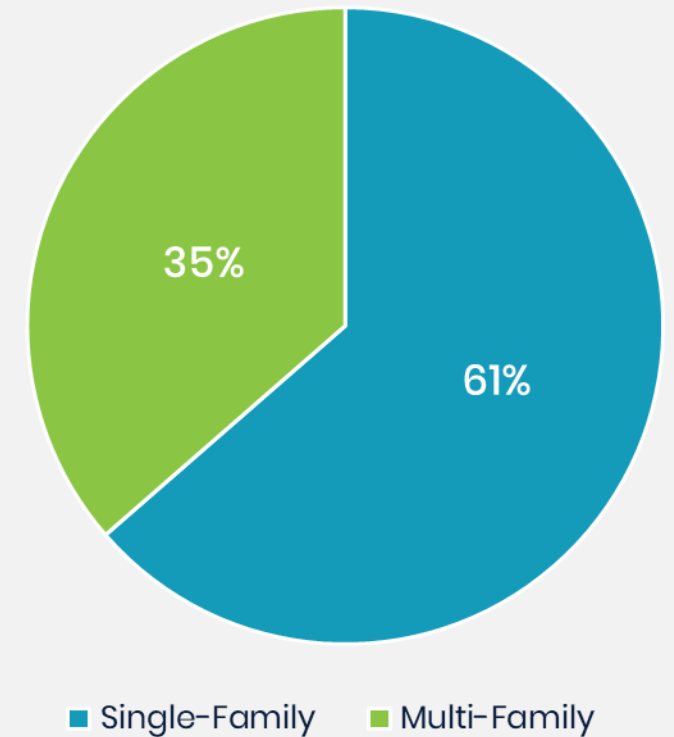
Households by County, 2016



Housing Tenure in SCAG Region, 2016



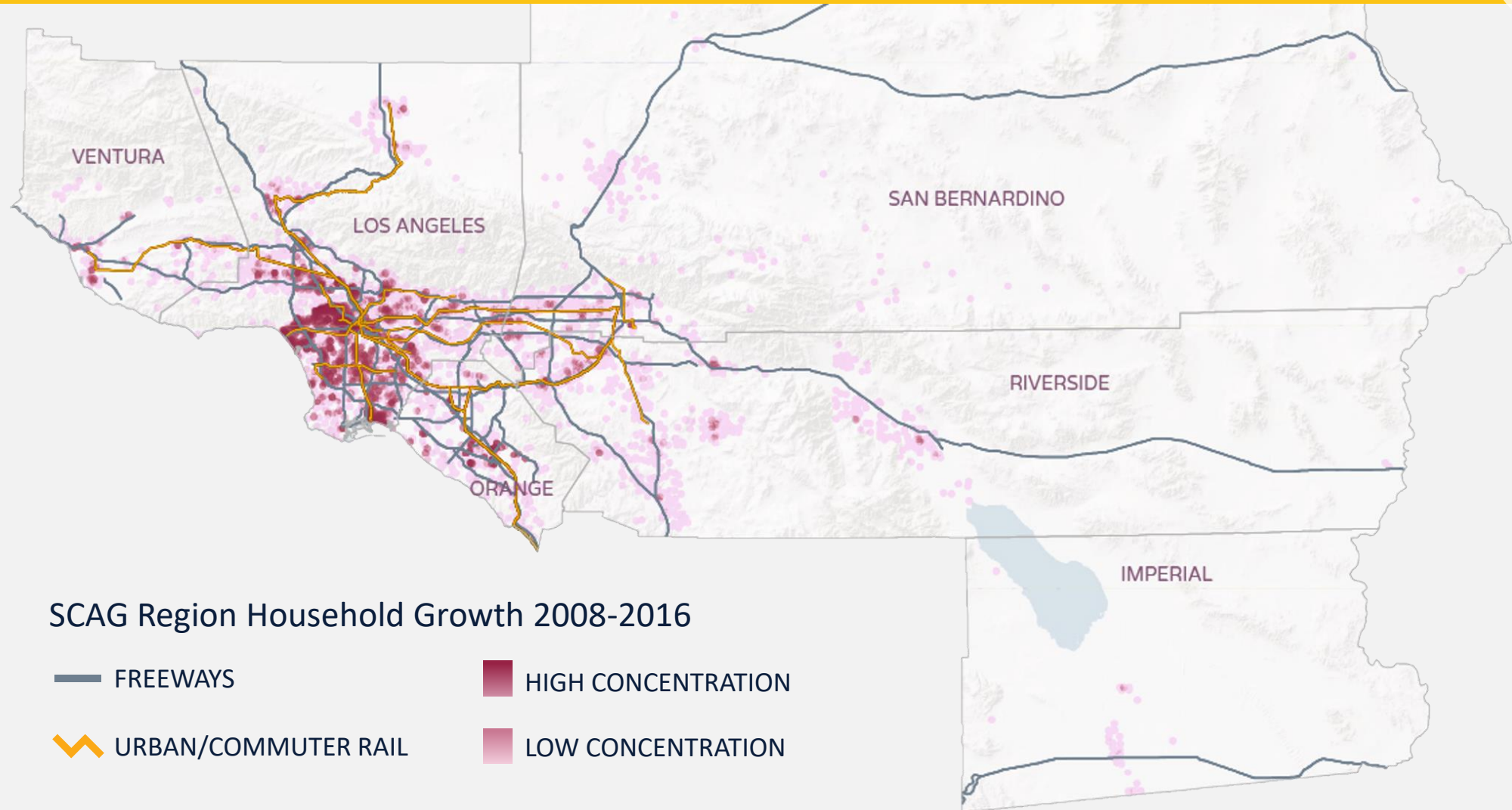
Housing by Type in SCAG Region, 2016



57% of renters are paying more than 30 percent of their income on housing



# Where We Have Grown



# How We Travel Today



Source: SCAG Activity Based Model

# Our Challenges



100

HOURS STUCK IN TRAFFIC



\$21.4B

ANNUAL COST OF TREATING CHRONIC DISEASE



~15%

OF BRIDGES ON THE NHS ARE IN POOR CONDITION



1,500

ANNUAL TRAFFIC FATALITIES



21%

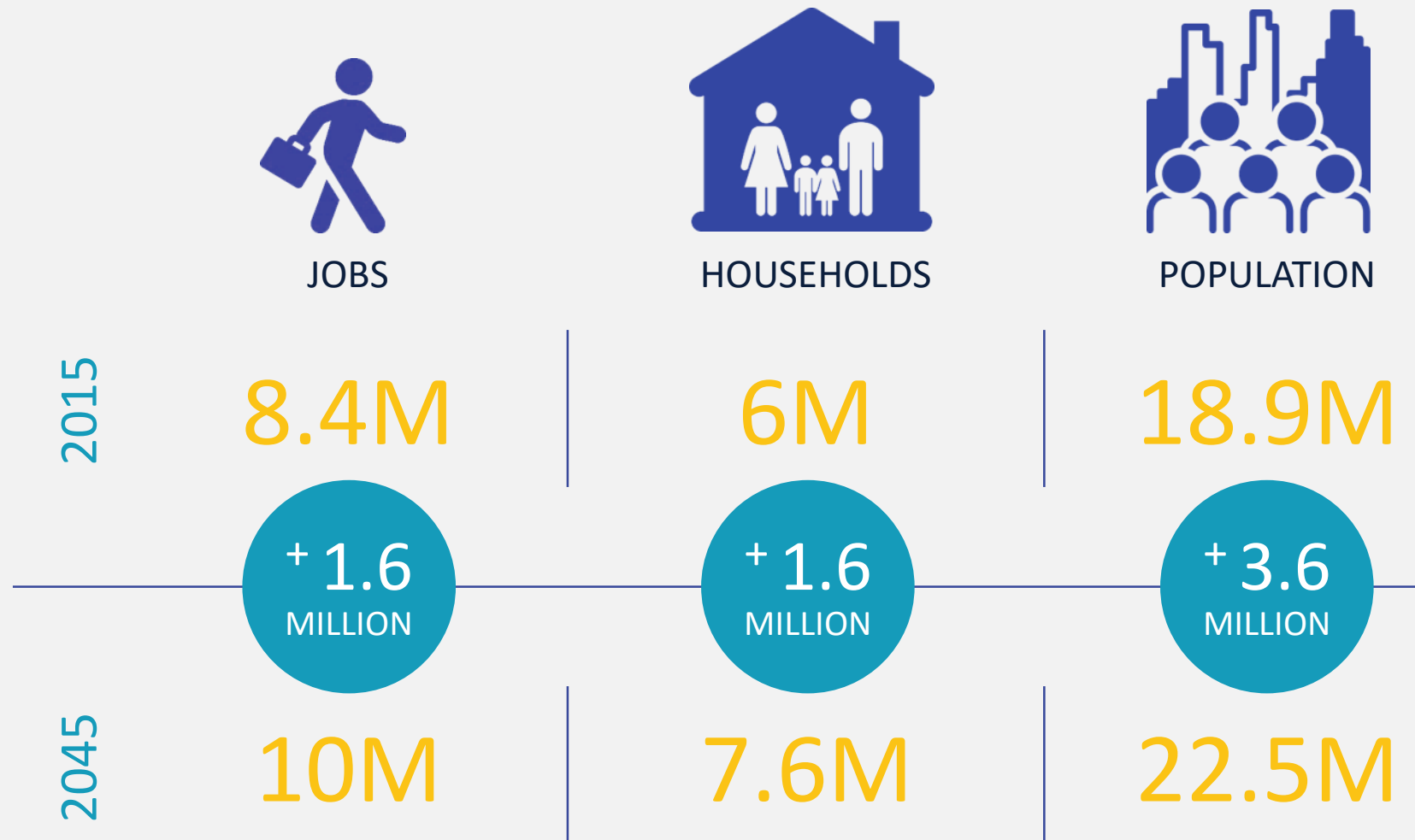
FARMLANDS LOST SINCE 1984



78%

OF THE POPULATION LIVING IN FLOOD HAZARD AREAS ARE MINORITIES

# Planning for 2045 – Growth Forecast



# Planning for 2045 – Our Changing Age Structure



UNDER  
15



15-64



65+

2015

3.7M

12.6M

2.4M

2045

3.9M

14M

4.6M

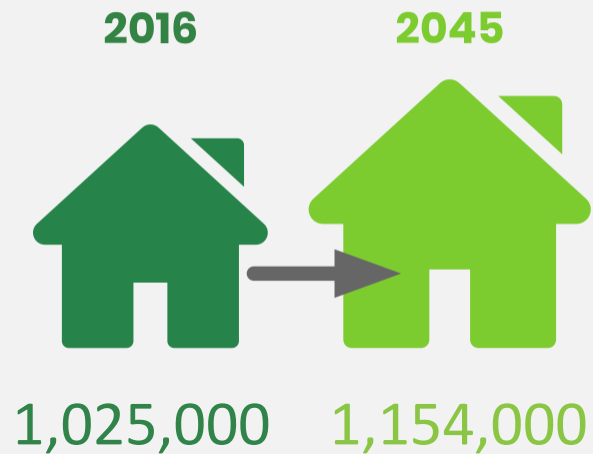
BY 2045

1 IN 5

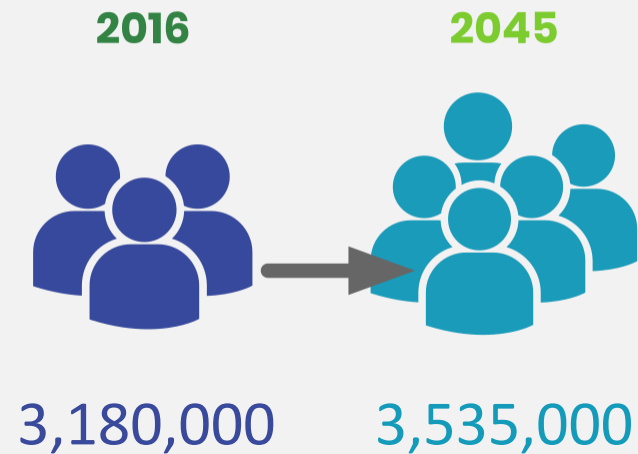
PEOPLE WILL BE AGE 65+

# How Orange County Will Grow

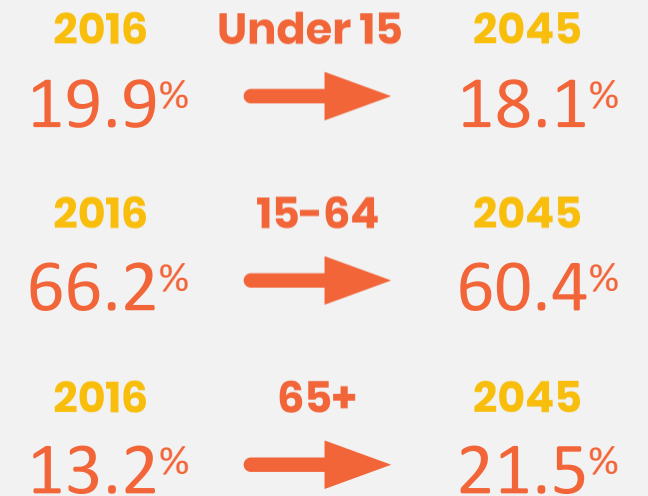
## HOUSEHOLD GROWTH



## POPULATION GROWTH



## CHANGING DEMOGRAPHICS



# A Path to Greater Access, Mobility & Sustainability

About the Plan

SoCal Today

Paying Our  
Way Forward

Measuring Our  
Progress

Looking  
Ahead



## ROOTED IN THE 2008 AND 2012 PLANS, CONNECT SOCAL'S CORE VISION CENTERS ON:

- Maintaining and better managing the transportation network we have for moving people and goods.
- Expanding mobility choices by locating housing, jobs, and transit closer together.
- Increasing investment in transit and complete streets.

## KEY CONNECTIONS AUGMENT THE CORE VISION OF THE PLAN TO:

- Leverage and align new technologies with land use and transportation strategies.
- “Close the gap” to meet increasingly aggressive greenhouse gas reduction goals.



# Core Vision



COMPLETE  
STREETS



SUSTAINABLE  
DEVELOPMENT



DEMAND & SYSTEM  
MANAGEMENT

A Path to Greater Access,  
Mobility & Sustainability

# Core Vision



TRANSIT  
BACKBONE



SYSTEM PRESERVATION  
& RESILIENCE

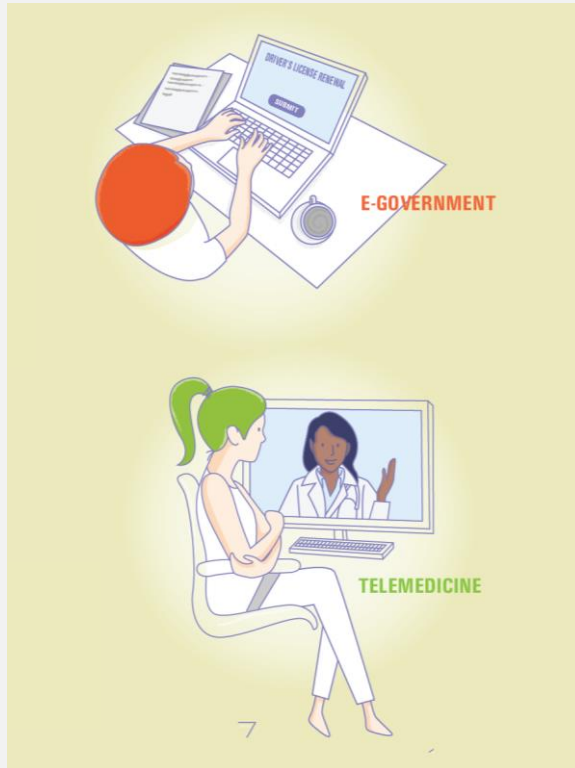


GOODS  
MOVEMENT

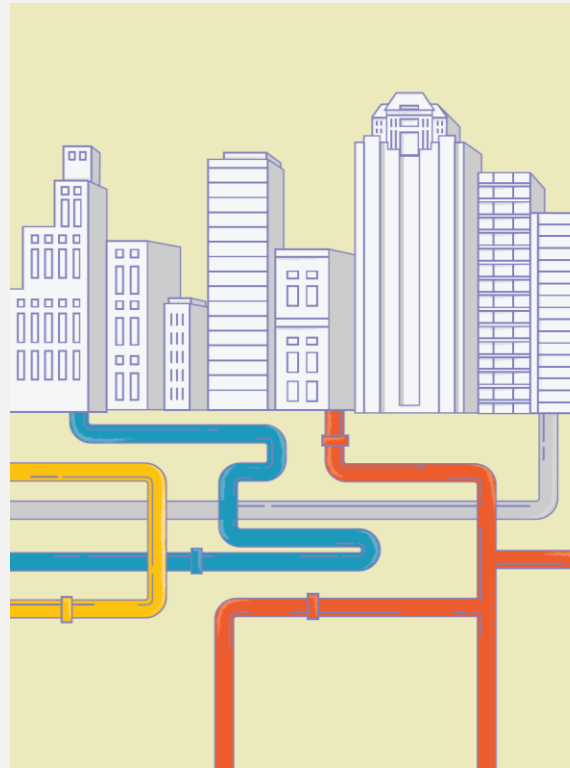
A Path to Greater Access,  
Mobility & Sustainability



# Key Connections



**SMART CITIES &  
JOB CENTERS**

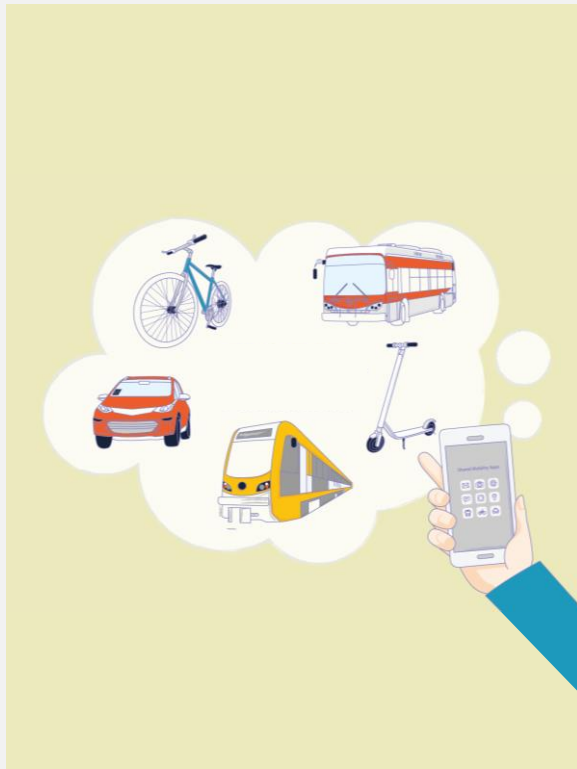


**HOUSING SUPPORTIVE  
INFRASTRUCTURE**

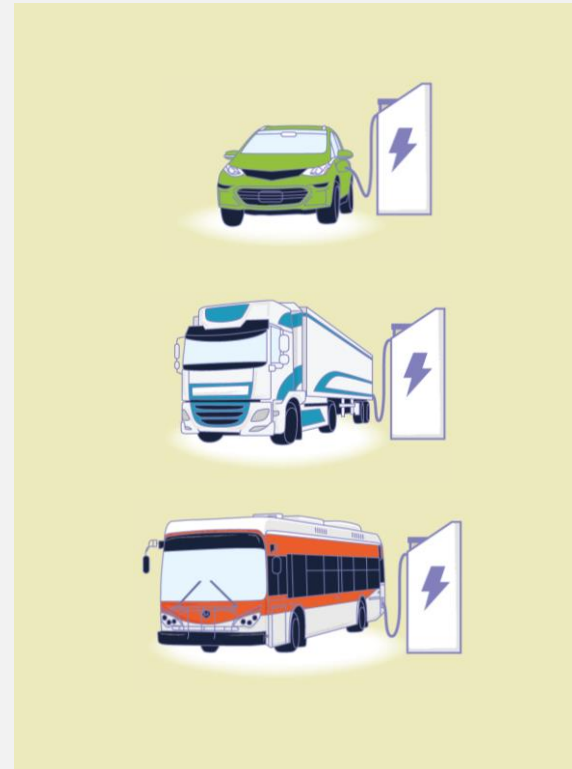


**GO ZONES**

A Path to Greater Access,  
Mobility & Sustainability



**SHARED MOBILITY &  
MOBILITY AS A SERVICE**



**ACCELERATED  
ELECTRIFICATION**

# Paying Our Way Forward

About the Plan

SoCal Today

A Path to Greater  
Access, Mobility &  
Sustainability

Measuring Our  
Progress

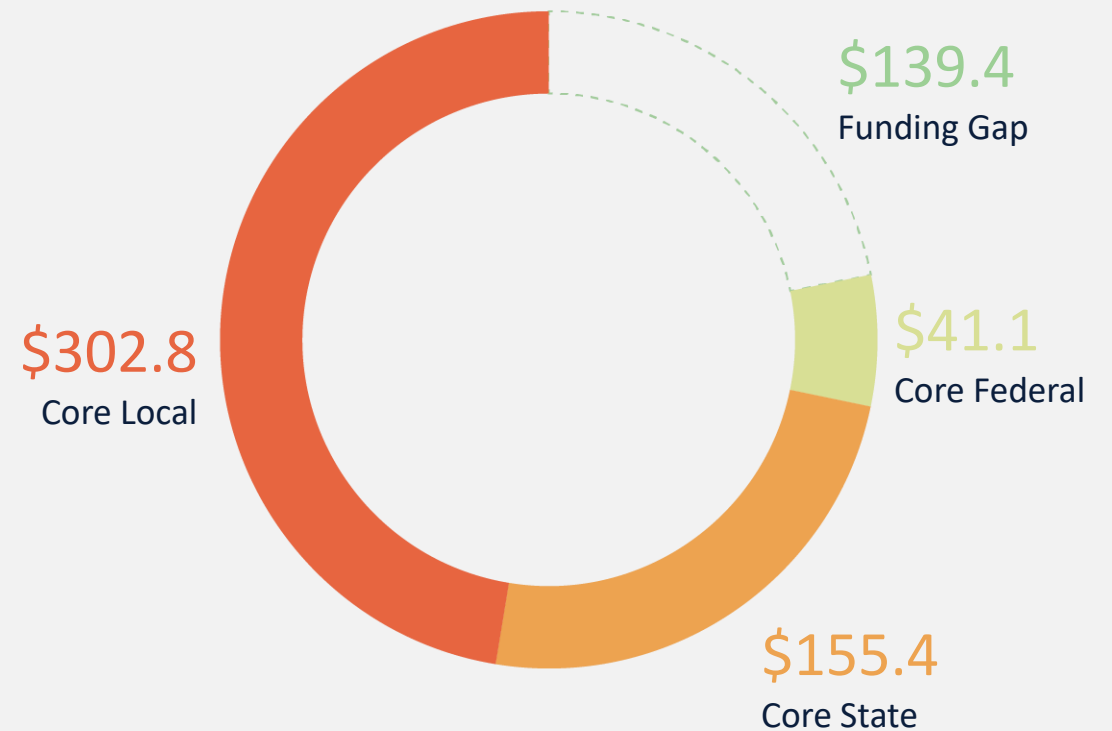
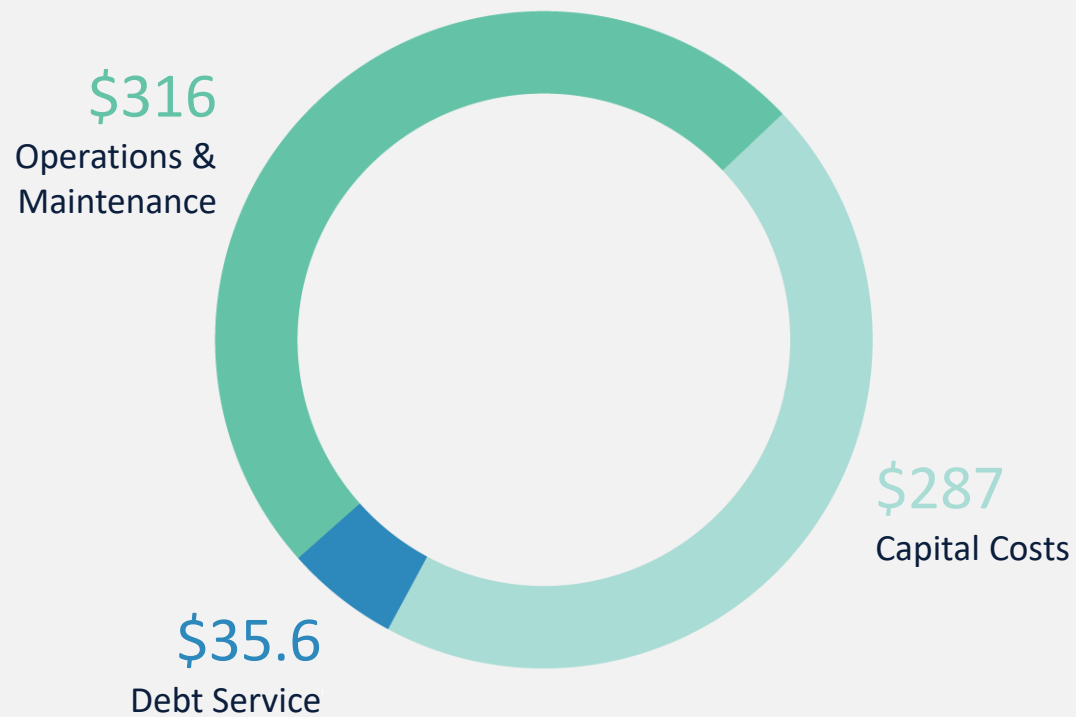
Looking  
Ahead



# Insufficient Core Revenues to Meet System Needs



Draft Total SCAG Region System Needs:  
\$638.6 billion (in nominal dollars)



# New Revenue Sources



Revenue Source	Amount (billions, in nominal dollars)
Federal Gas Excise Tax Adjustment to Maintain Historical Purchasing Power	\$2.7
Mileage-Based User Fee (Replacement)	\$42.7 (est. increment only)
Federal Credit Assistance; Bond Proceeds	\$2.2
Private Equity Participation	\$6.3
Local Road Charge Program	\$77.8
Value Capture Strategies	\$3.0
Transportation Network Company (TNC) Mileage- Based Fee	\$4.7
	<b>\$139.4 billion</b>

# Measuring Our Progress

About the Plan

SoCal Today

A Path to Greater  
Access, Mobility &  
Sustainability

Paying Our  
Way Forward

Looking  
Ahead



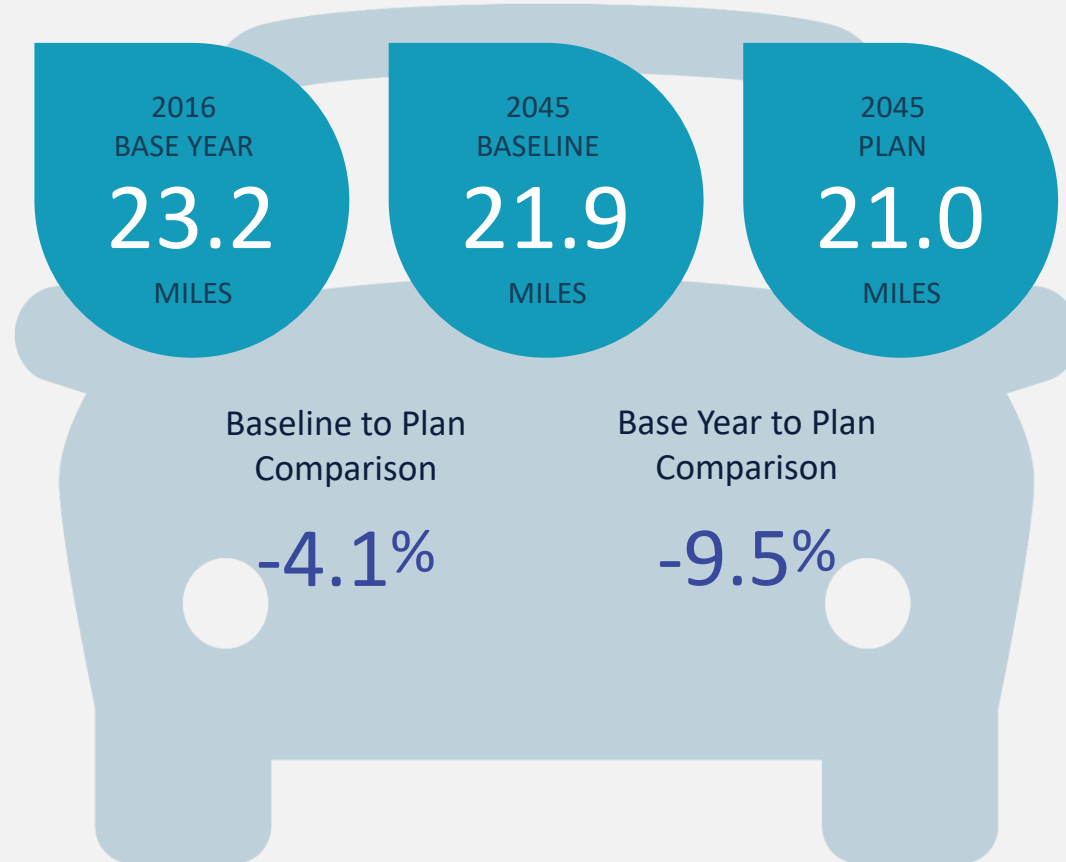


# Benefits of Plan Implementation



# Benefits of Plan Implementation

## Reduced Daily Vehicle Miles Traveled (per capita)



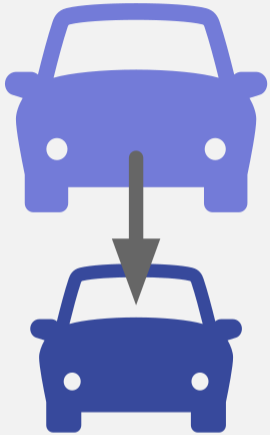
## Reduced Daily Minutes of Delay (per capita)





# Plan Benefits for Orange County

## REDUCES VEHICLE MILES TRAVELED



3.5%

Decrease when plan compared to baseline

## EMPLOYMENT IMPACT



65,500

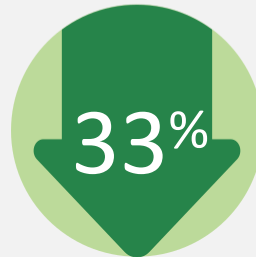
Average jobs generated per year

## HOUSEHOLD COST SAVINGS (TRANSPORTATION, WATER, ENERGY)

$$\begin{array}{rcl} \$14,490 & - & \$14,036 \\ \text{Household cost} & & \text{Household cost} \\ \text{without plan} & & \text{with plan} \end{array} = \$454$$

Annual household savings

## LAND CONSUMED



Reduction in greenfield area of preserved land compared to trend

## PROJECTED DAILY DELAY IMPROVEMENTS (PER CAPITA)



2016 Delay



2045 Delay without plan



2045 Delay with plan

## Looking Ahead

About the Plan

SoCal Today

A Path to Greater  
Access, Mobility &  
Sustainability

Paying Our  
Way Forward

Measuring Our  
Progress



- Is a **transportation infrastructure investment strategy** that will impact Southern California, and beyond.
- Will invest over **\$638 billion on transportation improvement projects**.
- Will locate housing, jobs and transit closer together in **priority growth areas** while preserving natural lands and open spaces.
- Will **link the built environment and transportation system** with policies, projects and programs that strengthen and enhance each other beyond what each would accomplish in isolation.
- Will **deliver significant benefits to the region** with respect to mobility, safety, health outcomes, travel time reliability, air quality, economic productivity, environmental justice, and transportation assets.
- Will **generate approximately 362,700 jobs annually**.



## COMPASS

NOT A ROADMAP



## VISION

NOT A GUARANTEE



## PLATFORM

FOR REGIONAL COLLABORATION AND  
PARTNERSHIPS

# What's Next?

Draft Connect SoCal & PEIR Release	Nov. 2019
Connect SoCal Public Comment Period	Nov. 2019 – Jan. 2020
Connect SoCal PEIR Public Comment Period	Dec. 2019 – Jan. 2020
Elected Official Workshops	Nov. 2019 – Jan. 2020
Public Hearings	Dec. 2019
Final Adoption of Connect SoCal & PEIR	April 2020



VIEW THE DRAFT CONNECT SOCIAL PLAN

[www.connectsocial.org/draft](http://www.connectsocial.org/draft)

SHARE YOUR FEEDBACK

[www.connectsocial.org/feedback](http://www.connectsocial.org/feedback)



# Thank You!

Learn more by visiting  
[www.connectsocal.org](http://www.connectsocal.org)