



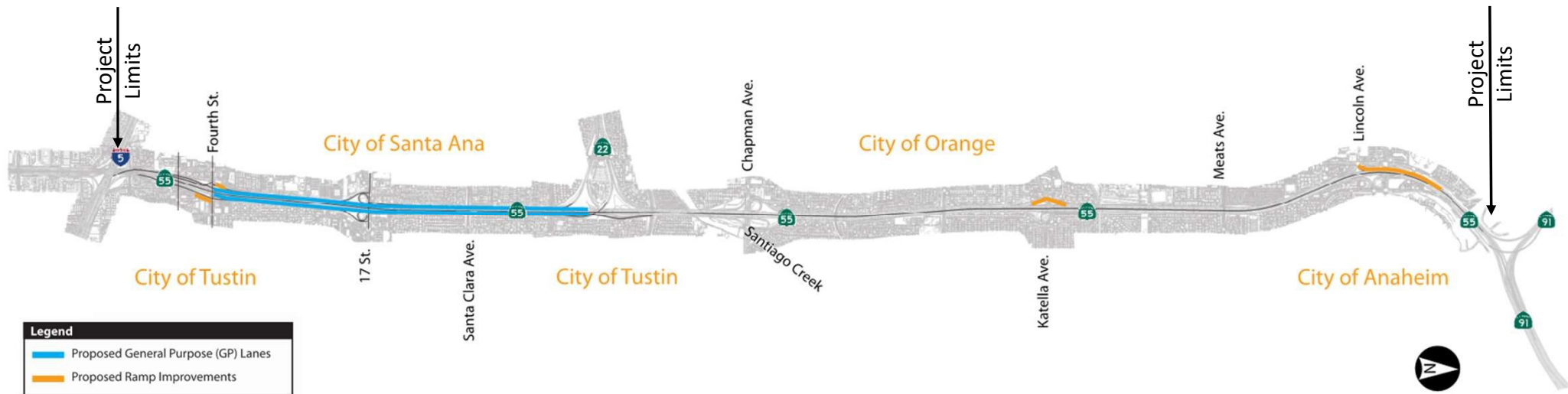
Update on State Route 55 Improvement Project from Interstate 5 to State Route 91

About the Project



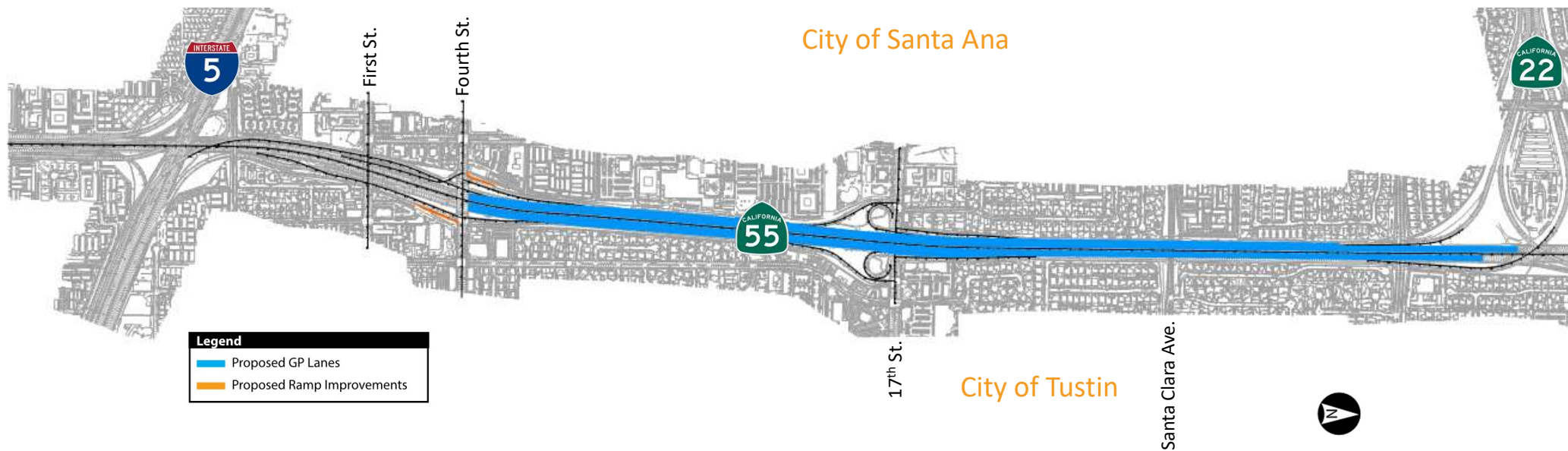
- **Measure M2 Project F, State Route 55 (SR-55) Improvements**
 - Add new lanes between Interstate 5 (I-5) and State Route 22 (SR-22)
 - Provide operational improvements between SR-22 and State Route 91 (SR-91)
- **Project Purpose:**
 - Improve mobility
 - Reduce congestion
 - Increase freeway capacity
 - Improve traffic operations
- **Project Objective:**
 - Minimize environmental impacts and right-of-way (ROW) impacts

Project Limits



- Traffic congestion exists on southbound (SB) SR-55 in the AM and northbound (NB) SR-55 in the PM.
- Existing traffic demand exceeds capacity.
 - Average daily traffic is expected to grow from 257,000 to 281,000 by 2055.
- A traffic study and extensive coordination resulted in the proposed addition of new lanes and interchange operational improvements, generally within the existing ROW.

SR-55 Between I-5 and SR-22



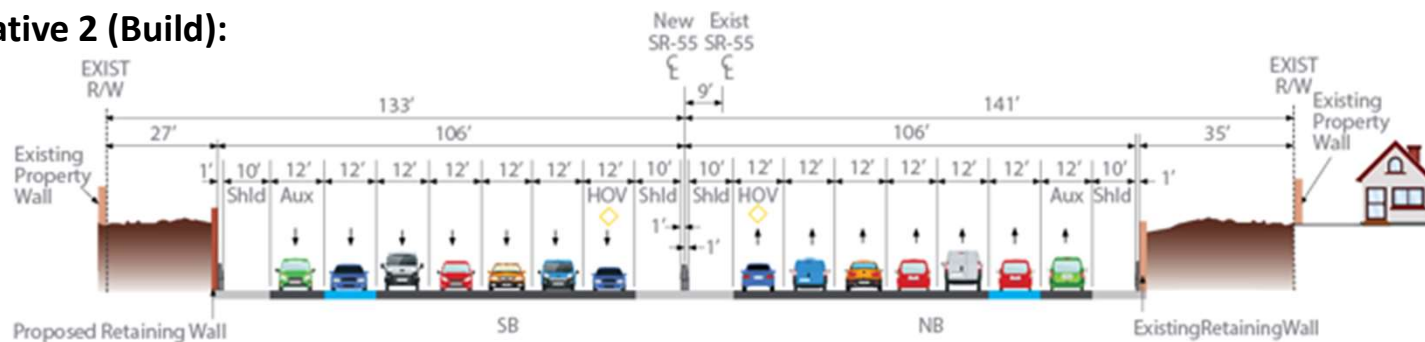
- Add one GP lane in each direction
- Add capacity to off-ramps at Fourth Street
- Improve Fourth Street intersections to comply with the Americans with Disabilities Act (ADA)

SR-55 Between Fourth Street and 17th Street

Alternative 1 (No Build):



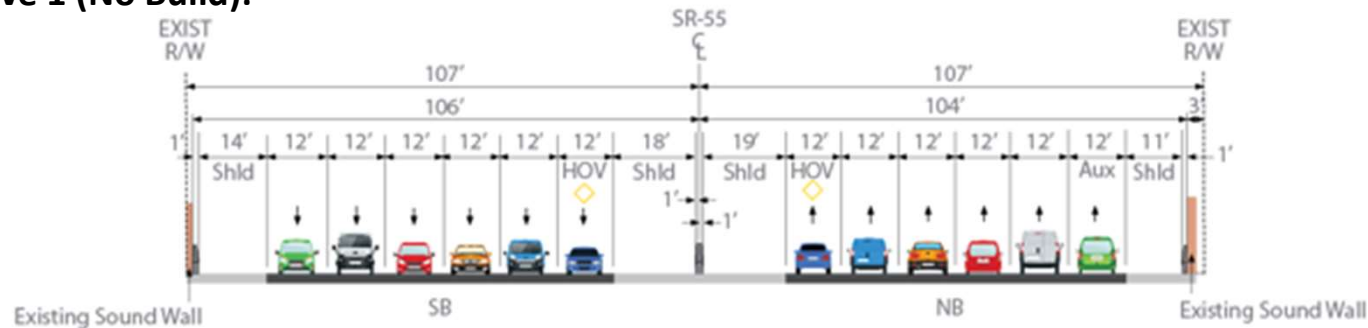
Alternative 2 (Build):



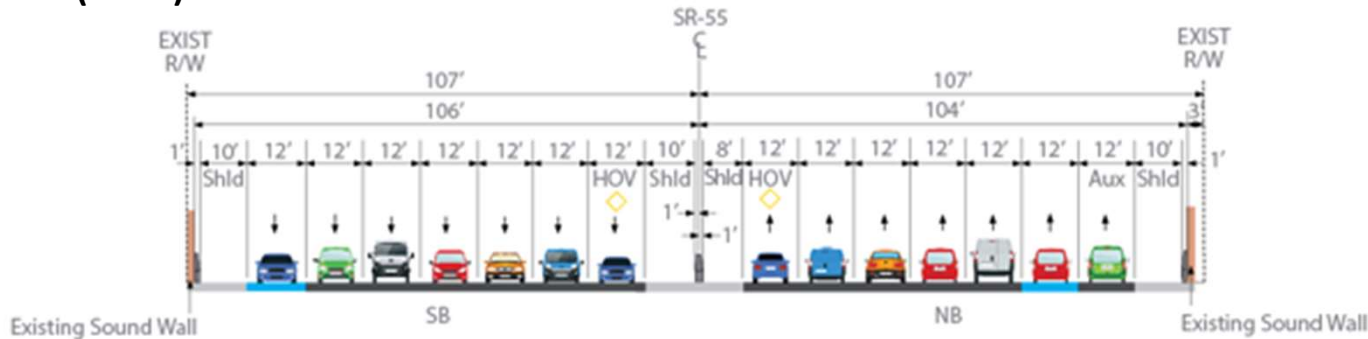
- Centerline shift to reduce construction impacts

SR-55 Between 17th Street and SR-22

Alternative 1 (No Build):



Alternative 2 (Build):



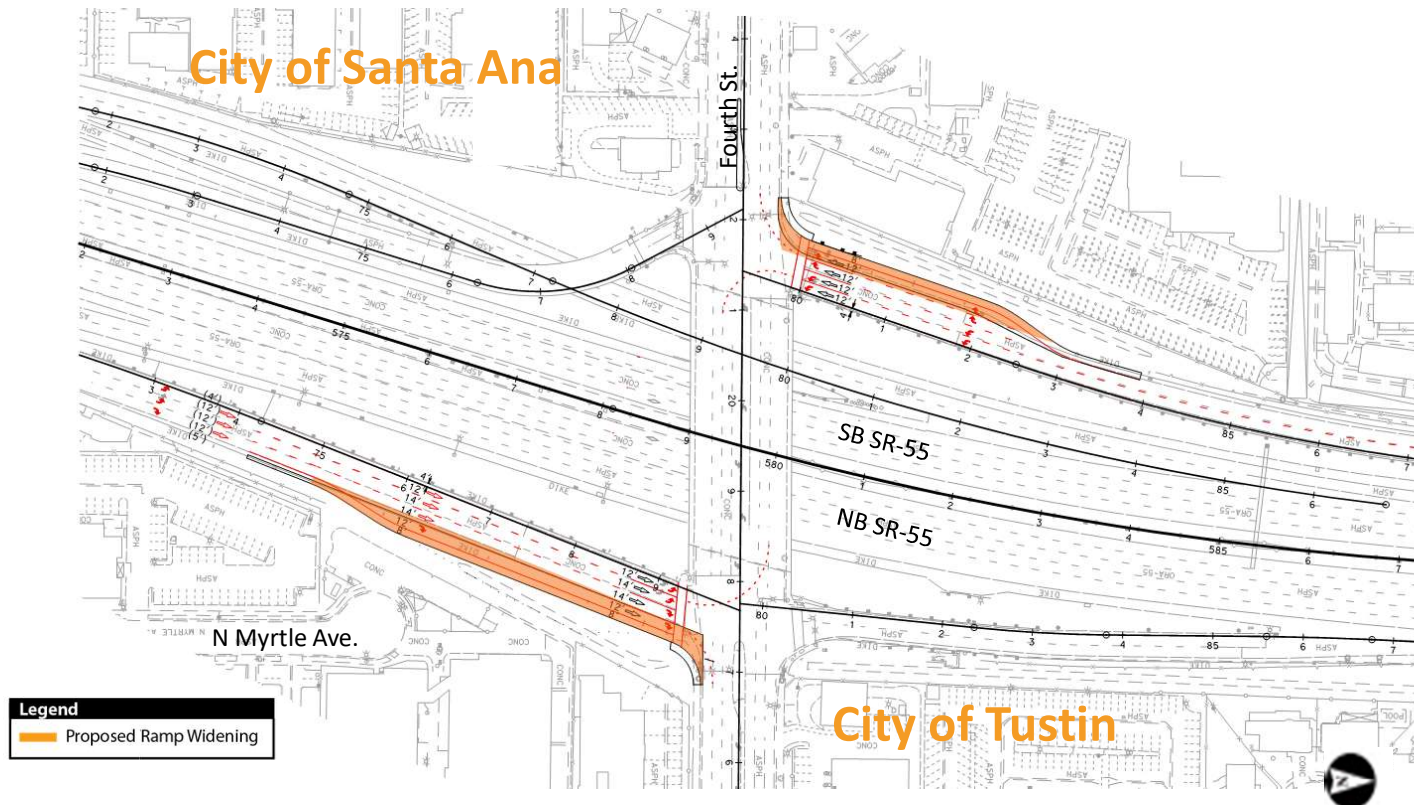
- Maintain existing centerline with reduced inside shoulder to avoid ROW and environmental impacts

Traffic Benefits

Average Daily Traffic Volumes			
SR-55	Existing	2055 – Alternative 1 (No Build)	2055 – Alternative 2 (Build)
NB	135,000	146,000	158,000
SB	122,000	135,000	139,000
Total	257,000	281,000	297,000

Build Annual Vehicle Delay Savings (Hours)		
Year	Delay Savings	Delay Savings (%)
2035	905,000	10%
2055	1,256,000	11%

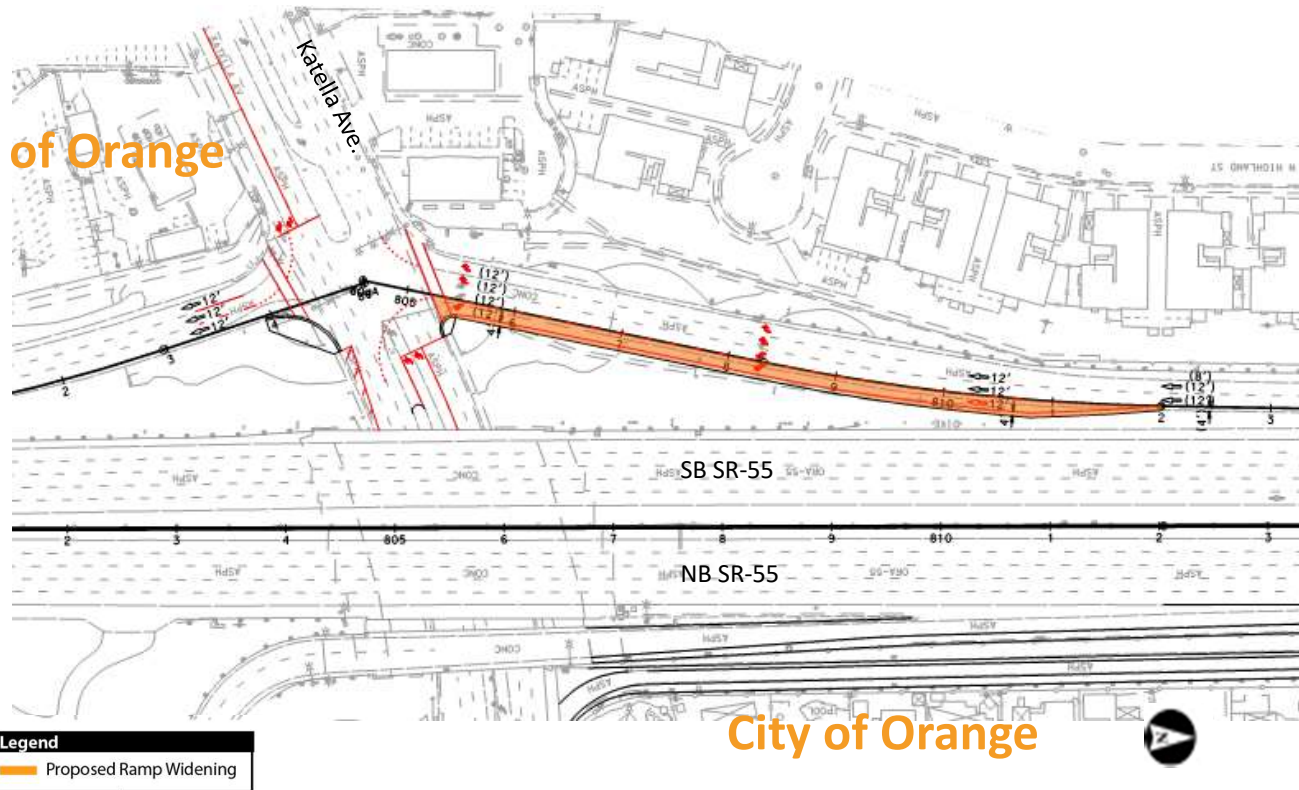
SR-55 Fourth Street Off-Ramp Widenings



- Adds capacity to off-ramps and improves operations of intersections
- Provides ADA-compliant crossings

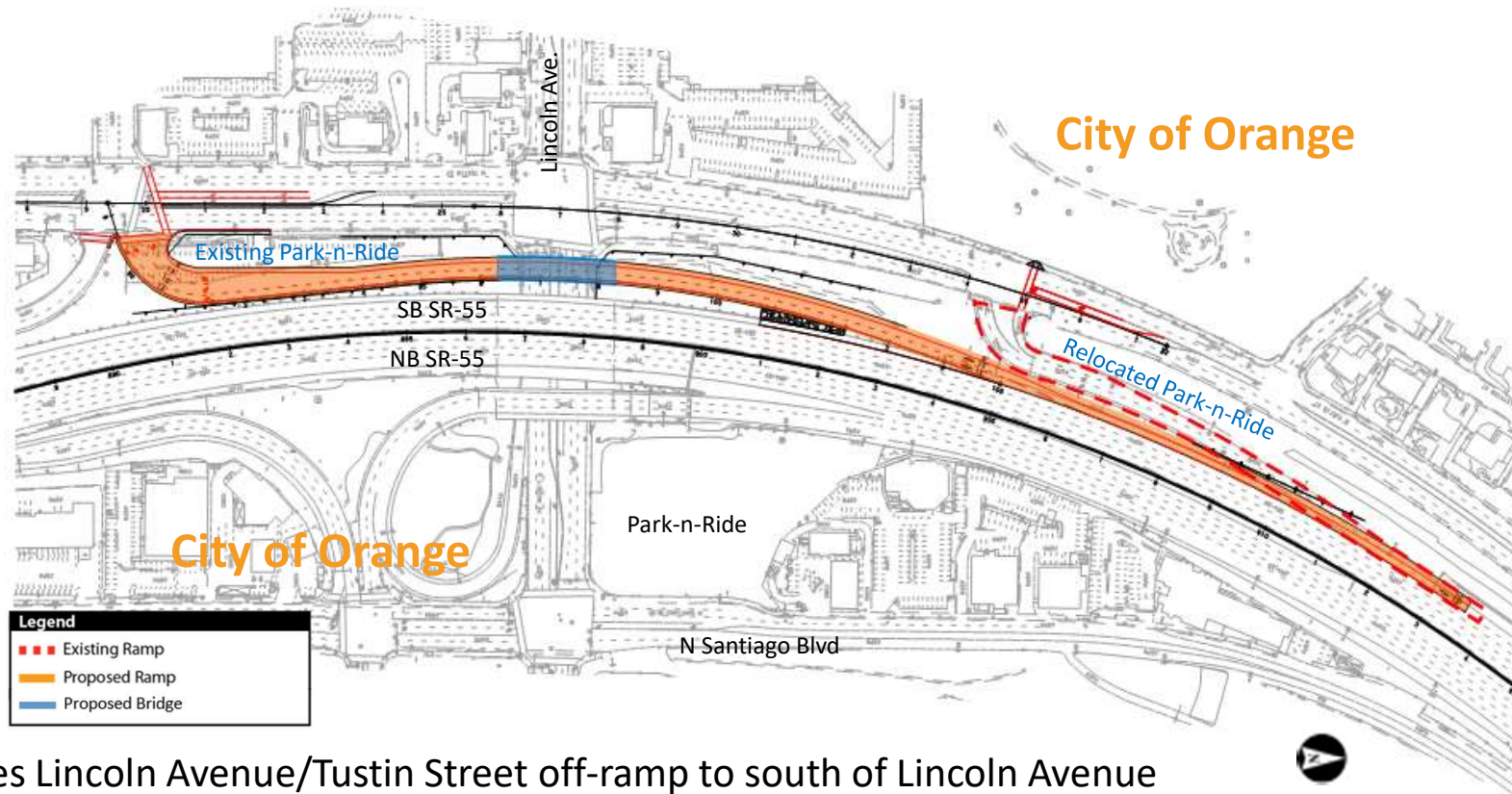
SR-55 Katella Avenue Ramp Widening

City of Orange



- Adds capacity to SB off-ramp and improves operations of intersection
- Provides ADA-compliant crossing
- Reduces queue on right-turns onto SB on-ramp

SR-55 Between SR-91 and South of Lincoln Avenue



- Relocates Lincoln Avenue/Tustin Street off-ramp to south of Lincoln Avenue
- Existing Park-n-Ride will be relocated to the existing off-ramp as a part of the Project

Public Outreach and Noticing



- Civic organization briefings
- Business/school outreach
- City Council presentations
- Collateral development
- Media advertisement
- Social media



Environmental Phase Schedule



	2016	2017	2018	2019	2020
Environmental Phase					
Public Information Meeting		June 7, 2018	★		
Draft Project Report and Environmental Document (30-day review)		Late September – Late October 2019			■
Public Hearing (Open House Format)			Mid October 2019	★	
Incorporate public comments		Late October 2019 – Late 2019			■
Preferred Alternative Selection				Late 2019	
Final Environmental Document			Complete early 2020		■