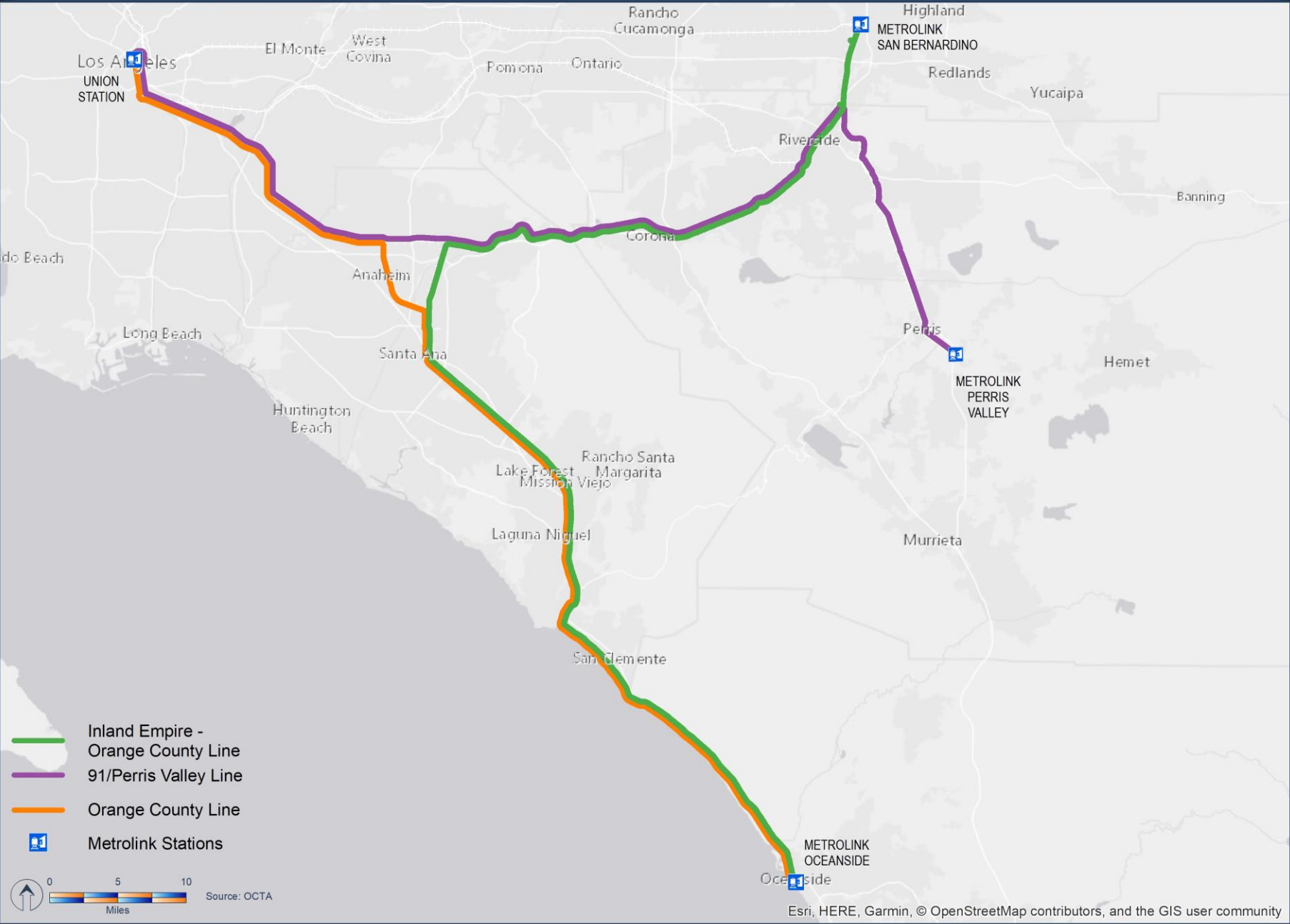


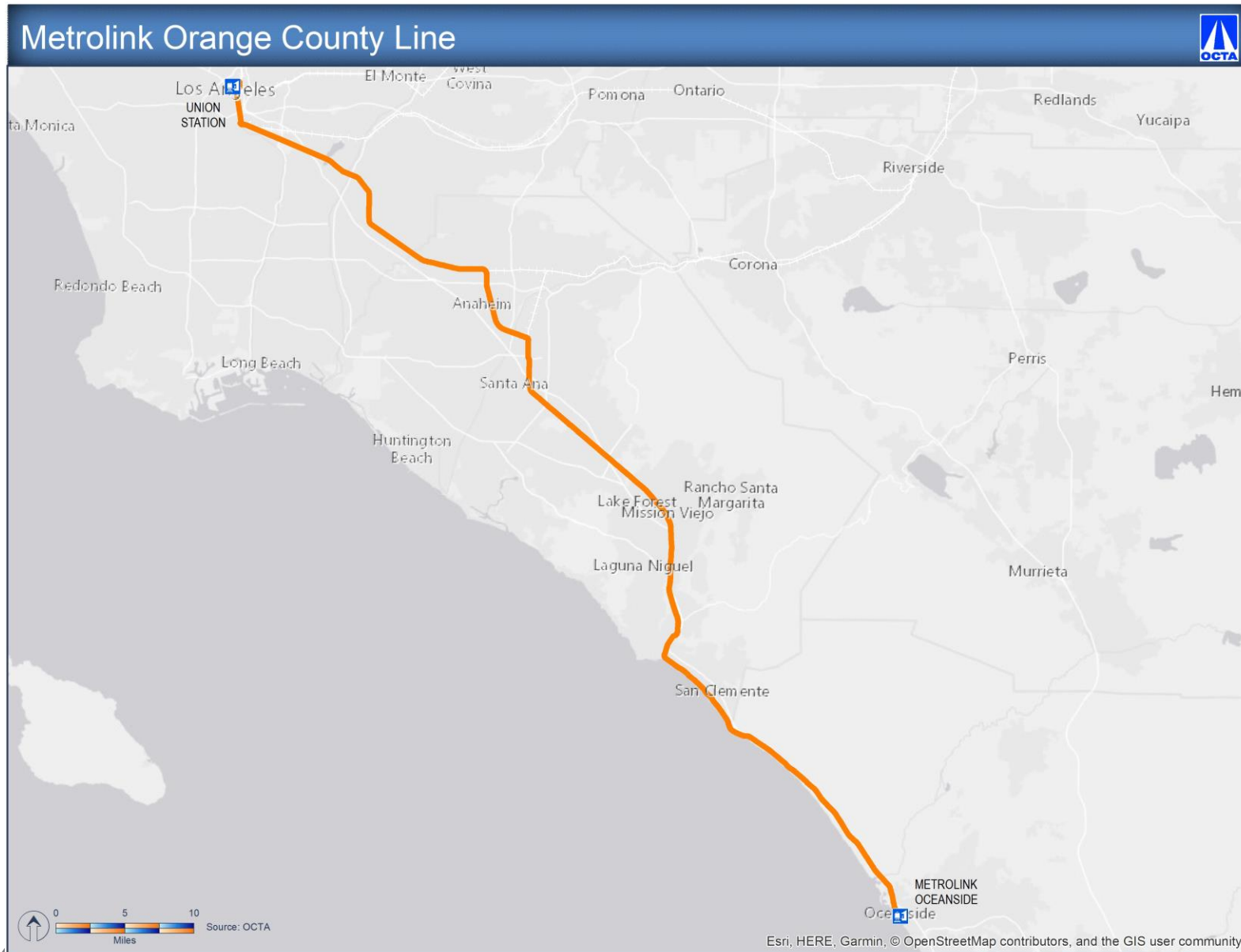
Metrolink Fiscal Year 2018-19 Performance Report



MetroLink Lines Serving Orange County

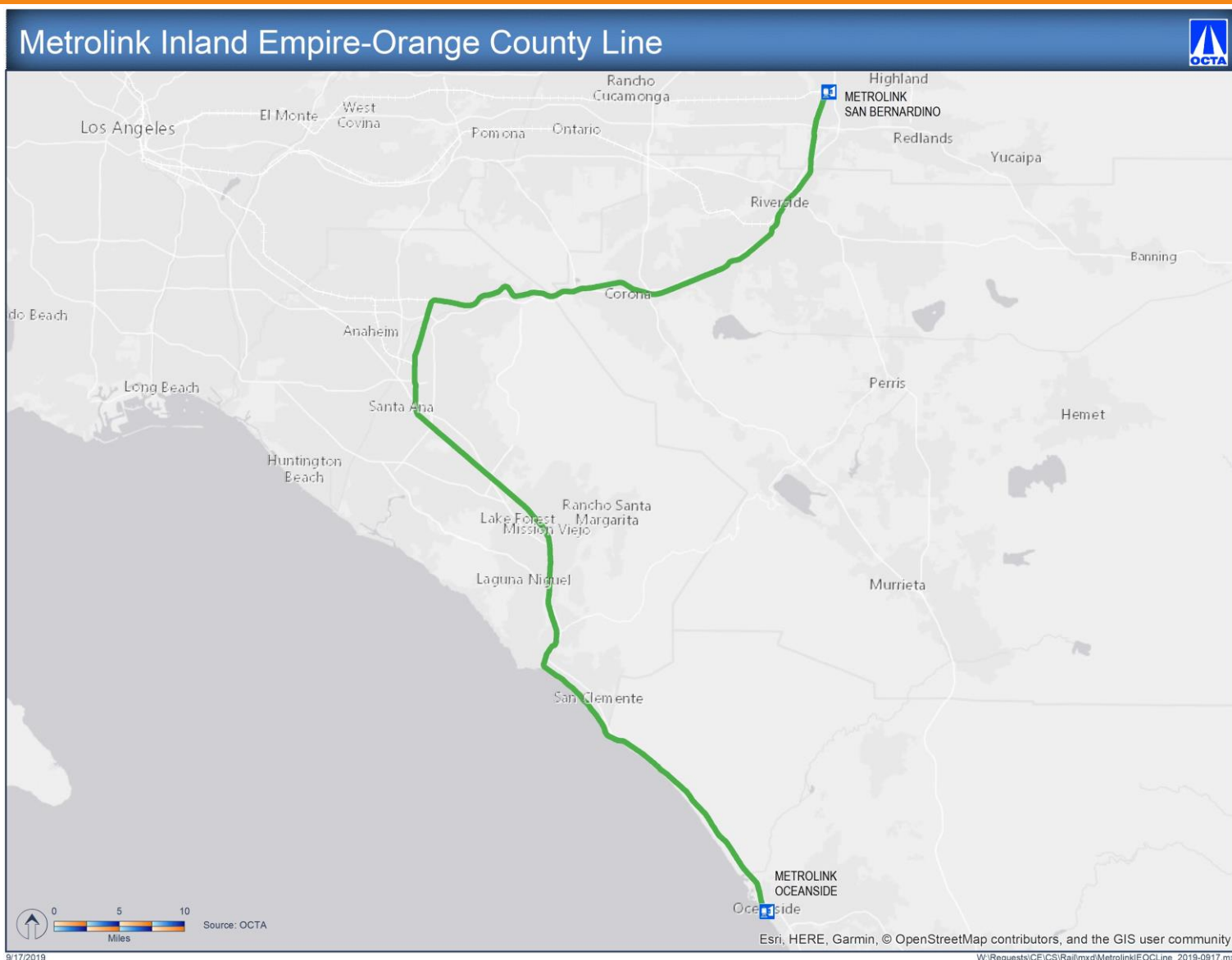


Orange County (OC) Line



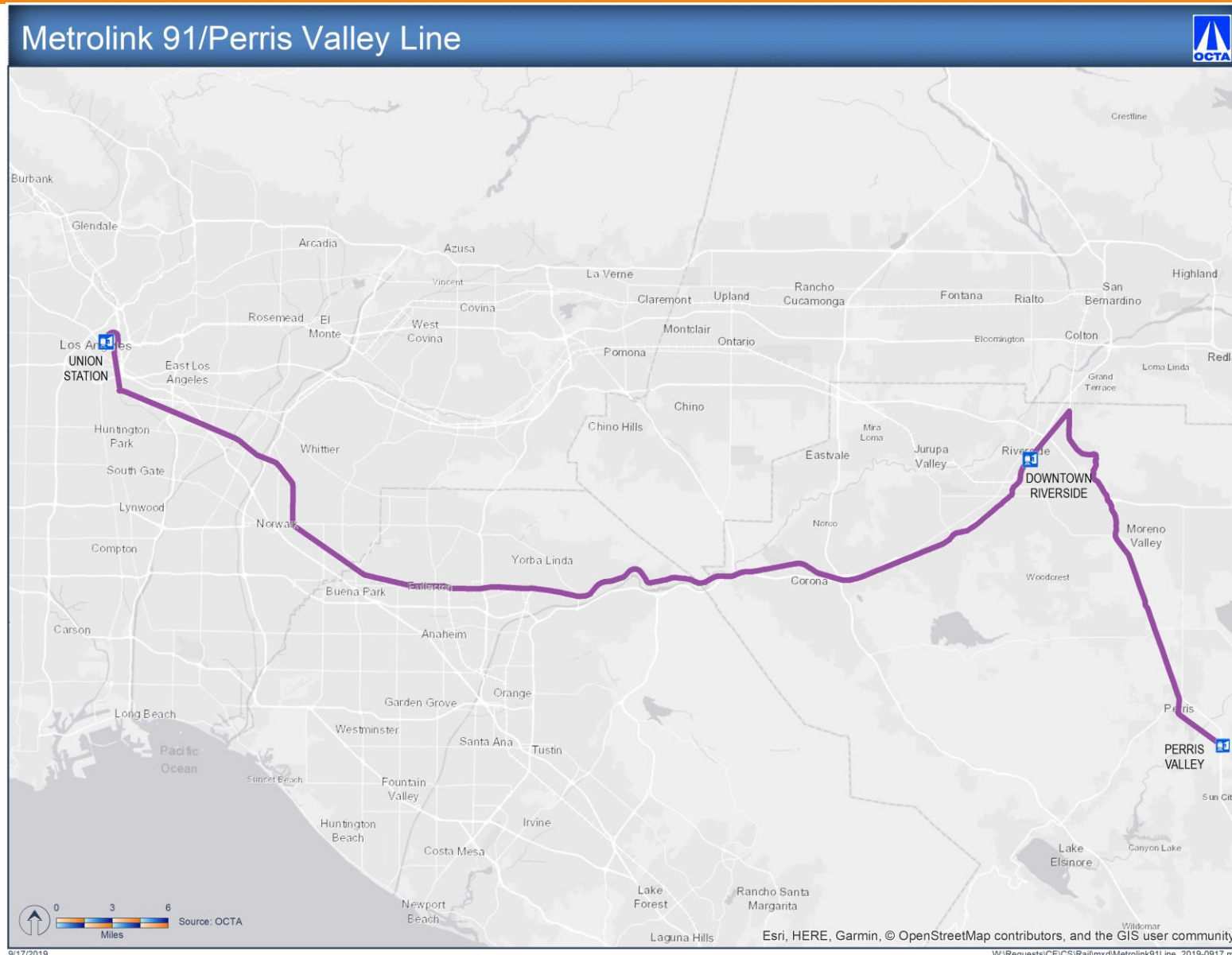
- 29 daily trains
- Total ridership up 1.7%
- Weekend ridership up 2.2%
- Revenue up 1.6%
- On-time performance (OTP) 90.9%

Inland Empire-Orange County (IEOC) Line



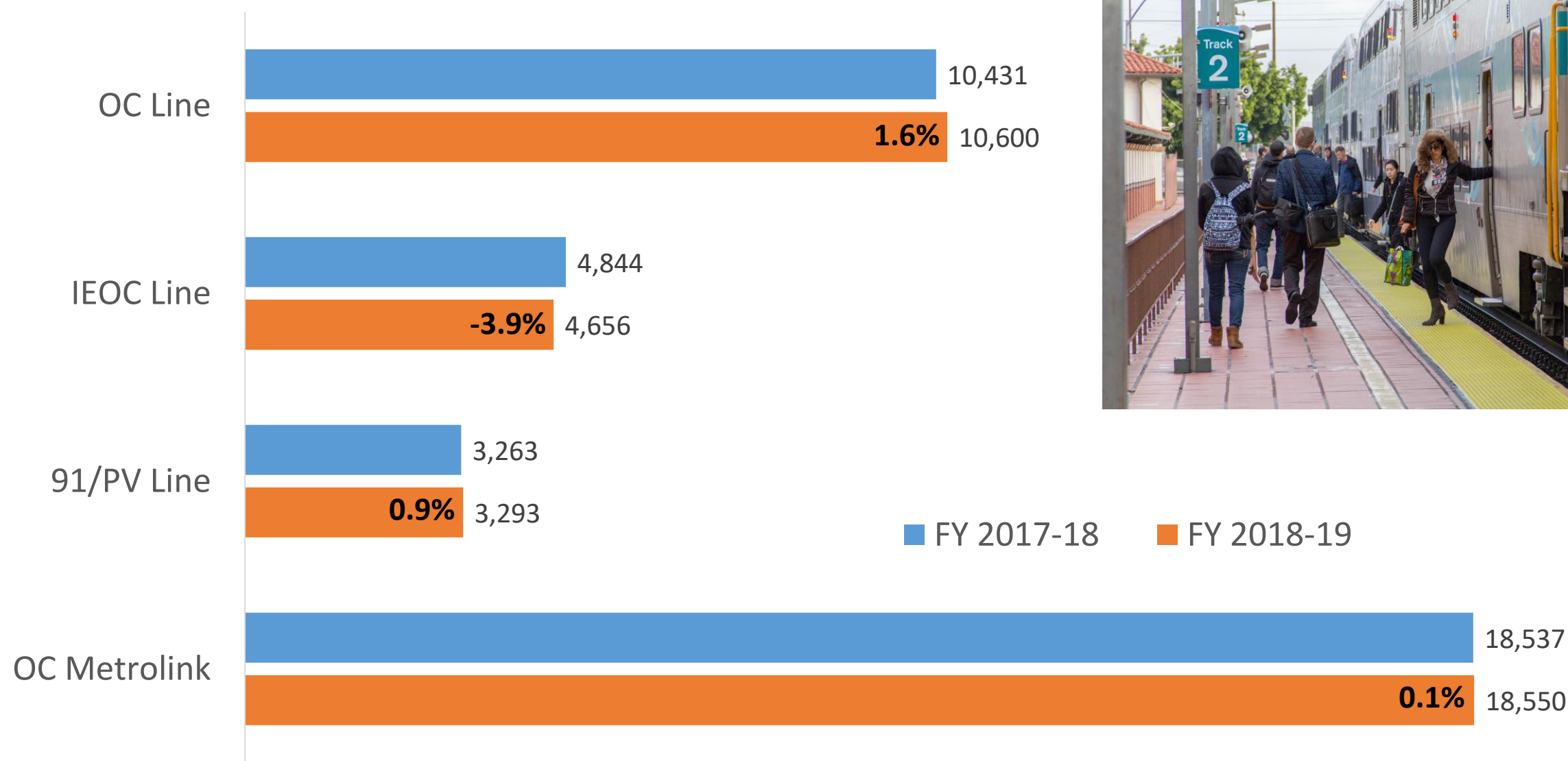
- 16 daily trains
- Total ridership down 3.9%
- Weekend ridership down 5.3%
- Revenue down 4.4%
- OTP 89.7%

91/Perris Valley (91/PV) Line

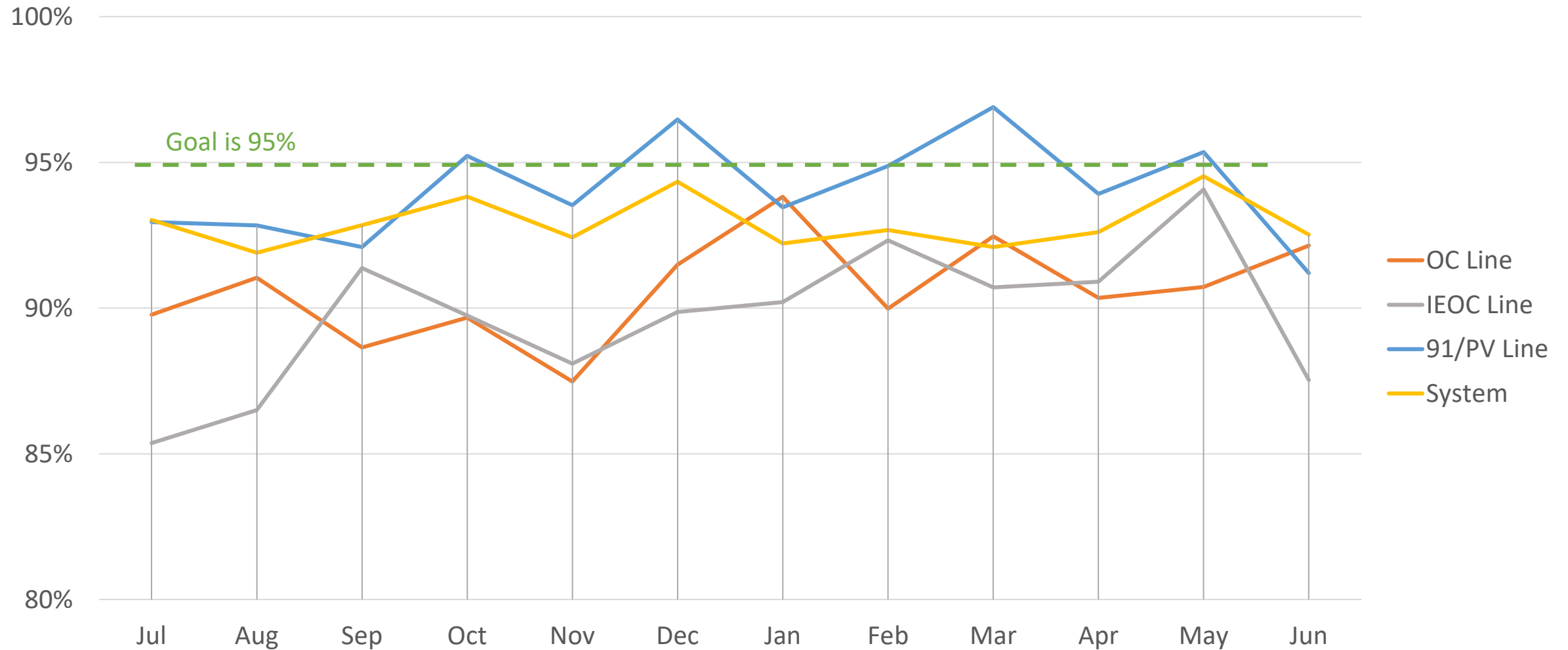


- Nine daily trains
- Total ridership up 0.6%
- Weekend ridership down 4%
- Revenue up 0.1%
- OTP 94.1%

Average Weekday Ridership



On-Time Performance



Initiatives

- Record System Ridership in FY19
- Tier 4 Locomotives – 23/40 in service
- Bundled Contract
- Guest Conductor Program
- Full Positive Train Control Implementation
- Safety – Automated External Defibrillators and Text Feature



Special Trains

- Angels Express
- Lunar New Year
- Rams Football Trains

ANGELS EXPRESS FAN TRAIN

Less traffic. More fun!

ONLY
\$7
OR LESS
ROUND
TRIP



FIRST 100 RIDE FREE!*

**120TH LOS ANGELES
GOLDEN
DRAGON
PARADE**

Saturday, February 9, 2019

METROLINK

**TAKE THE
METROLINK TRAIN
TO THE LOS ANGELES
RAMS GAME FOR
ONLY \$10 ROUND TRIP**

Taking the Metrolink Train to the Los Angeles Rams Game helps you beat traffic, parking costs and missed kick-offs!

Service to 4 select Los Angeles Rams home games starting at 1:05 pm and 1:25 pm.

metrolinktrains.com/football

Metrolink Weekends - Daycations

