



# M2 Natural Community Conservation Plan/Habitat Conservation Plan– First Annual Report

2019

Prepared by  
**Orange County Transportation Authority**  
550 S. Main Street  
Orange, CA 92863



With support from  
**ICF**  
525 B Street, Suite 1700  
San Diego, CA 92101





# Executive Summary

---

This is the first Annual Report for the Orange County Transportation Authority (OCTA) M2 Natural Community Conservation Plan/Habitat Conservation Plan (NCCP/HCP or Plan), covering all activities up to December 31, 2018. This report summarizes the tracking of impacts associated with covered freeway improvement projects and other management and monitoring activities on Preserves (Covered Activities), status and activities on the OCTA Preserves, progress on the implementation of OCTA-funded restoration projects, and additional Plan administration and public outreach activities. This Annual Report has been reviewed and approved by the California Department of Fish and Wildlife (CDFW) and U.S. Fish and Wildlife Service (USFWS), collectively referred to as the Wildlife Agencies. In addition, this Annual Report is presented to the OCTA Environmental Oversight Committee (EOC) and is available for a public review.

## Tracking Impacts from Covered Activities

OCTA keeps an accounting of the Plan-to-date impacts on habitat types from all covered freeway improvement projects to ensure impacts stay within the caps established within the Plan. To date, a total of **7.5 acres of habitat impacts have been authorized relative to a cap of 141.0 acres**. In addition, OCTA uses a consistency determination checklist to evaluate how and when avoidance and minimization measures are implemented on covered freeway improvement projects. Four projects (C1, B1, L1, M1) had consistency determinations drafted, modified, or completed within the timeframe of this Annual Report. Other tracking requirements include:

- *Tracking for Covered Plant Species Policy* – OCTA tracks the credits for covered plant species protection (on Preserves) and restoration/enhancement (restoration projects) relative to allowable impacts. The Plan-to-date balance for each plant species is net positive (intermediate mariposa lily [+963], many-stemmed dudleya [+60], southern tarplant [+1,513]).
- *Tracking Impacts on Habitat Types Resulting from Covered Activities within Preserves* – The Plan establishes a cap that no more than 13 acres (approximately 1%) of the natural habitat within the OCTA Preserves will be impacted by Preserve management activities. To date, no measurable permanent impacts have been recorded on the Preserves.
- *Maintaining Rough Proportionality* – The Plan requires implementation of conservation measures roughly proportional in time and extent to impacts on natural communities and Covered Species. To date, two restoration projects, Big Bend and City Parcel, have received sign-off from the Wildlife Agencies as meeting their success criteria and have achieved conservation credits that keeps the Plan ahead of allowable impacts.

## OCTA Preserves

OCTA acquired seven properties resulting in the protection of 1,236<sup>1</sup> acres of natural habitat (see Figure 1). In all instances, the seven Preserves are located within priority conservation areas and immediately adjacent to other protected lands. These Preserves add to the protection of large blocks of natural open space in areas important for regional conservation. OCTA has completed Resource Management Plans (RMPs) for each Preserve that includes Preserve-specific goals and objectives and define an appropriate level of public access and trail use consistent with protection of biological resources. It is anticipated that Conservation Easements will be completed and recorded in the near future. Currently each Preserve is being managed by OCTA, with the exception of the Eagle Ridge Preserve, which is being managed by Chino Hills State Park (CHSP) under an interim land management agreement. OCTA is working to identify and transition to long-term Preserve Managers in the near future. OCTA has contracted with the following consulting firms to support Preserve management: (1) Glenn Lukos Associates to provide biological monitoring, prepare invasive species management plans, and assist with public outreach events, (2) RECON Environmental to support general Preserve stewardship including maintenance of access roads, tree trimming, and control of public access, (3) Wildland Res Mgt to complete Fire Management Plans (FMPs), and (4) ICF to assist with completion of RMPs and preparation of the Annual Report. OCTA has hosted numerous Preserve-specific outreach events to educate the public about property value and access and plans to continue this process in the near term as part of a managed access approach. To date, a 1.5-acre fire occurred on the Eagle Ridge Preserve. The fire was extinguished quickly by Brea County Fire, and the burn area has been recovering with no additional management actions. No other fires or major events have occurred on the Preserves, although a level of trespassing and vandalism continues to occur requiring ongoing monitoring and enforcement.

## OCTA-Funded Restoration Projects

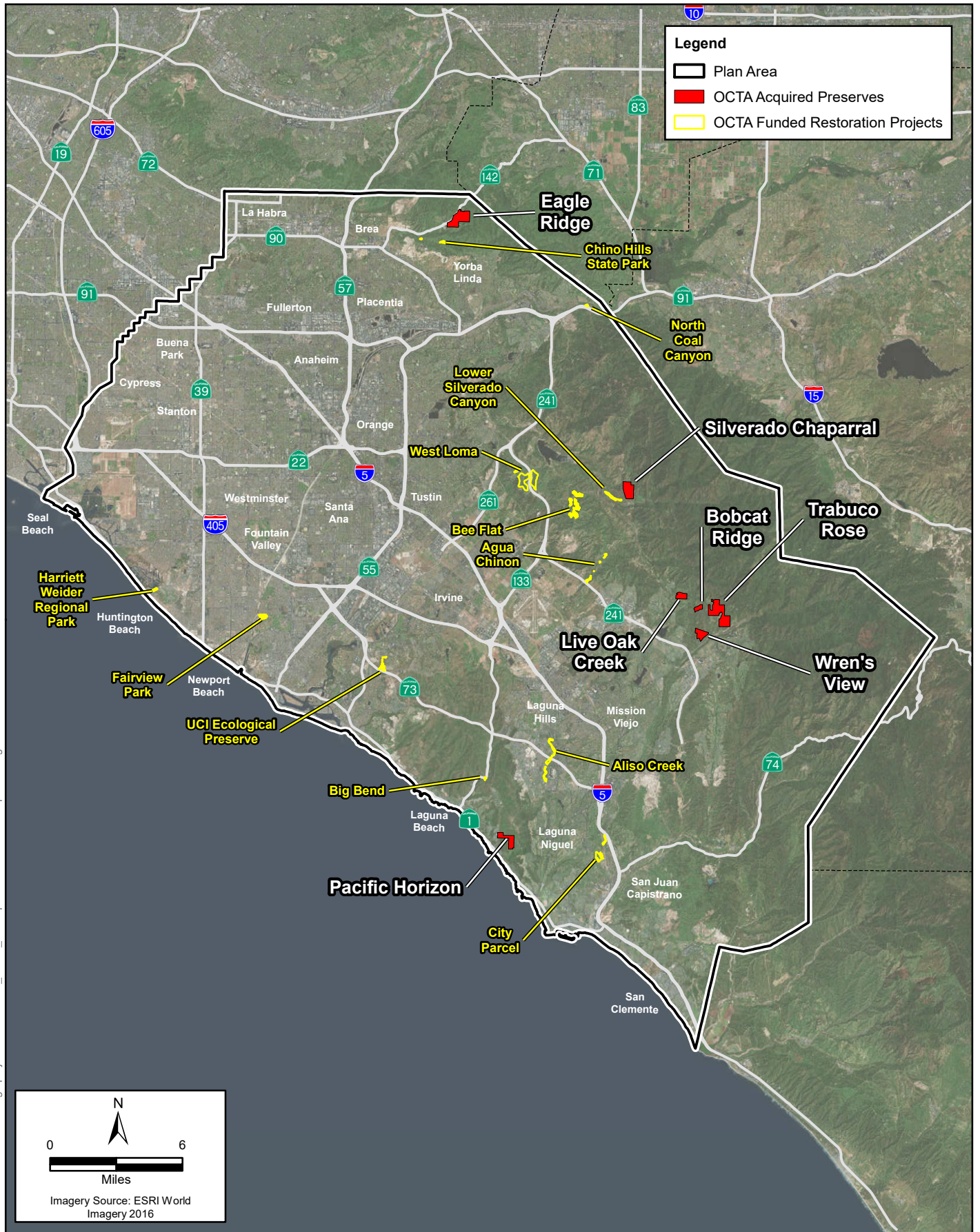
OCTA has approved funding for 11 restoration projects and a check dam removal project that will result in over 350 acres of restored habitats and improvement to habitat functions for Covered Species. The restoration projects occur throughout the Plan Area in core habitat areas and within key habitat linkages and riparian corridors (see Figure 1). The restoration projects are on lands that are currently managed and will enhance habitat for Covered Species. OCTA is working with the restoration project sponsors to complete implementation and monitoring of the restoration activities and achieve sign-off from the Wildlife Agencies that the restoration projects meet their success criteria. Each restoration project is at different stages of the process. To date, 2 of the 11 restoration projects have obtained sign-off.

## Additional Conditions for Coverage

As part of the Conservation Analysis (Chapter 6) in the Plan, there were two Covered Species, arroyo chub and many-stemmed dudleya, noted for additional conditions for coverage above and beyond

---

<sup>1</sup> The acreage of natural habitat preserved is based on best available information using during the preparation of RMPs and may be slightly different from acreages reported in the M2 NCCP/HCP.



**Figure 1-1**  
**OCTA M2 NCCP/HCP Preserves and Restoration Projects**  
**M2 NCCP/HCP Annual Report**

the acquisition of the OCTA Preserves and funding of restoration projects. In 2017, the EOC and Wildlife Agencies approved OCTA to fund the United States Forest Service Dam Removal restoration project that, when complete, will satisfy the conditions for coverage of arroyo chub. OCTA is currently taking steps to protect and enhance an existing population of many-stemmed dudleya on the Pacific Horizon Preserve with the hope that it will expand to help meet or will meet the criteria needed to achieve coverage for many-stemmed dudleya.

## Public Outreach

OCTA has been committed to transparency in how the M2 funds have been and are being used to implement the Plan and the broader Environmental Mitigation Program (EMP). OCTA has conducted a variety of public outreach activities aimed at informing and engaging the public on the overall EMP as well as Preserve-specific issues and events. These have included public meetings during the preparation of the Preserve RMPs, maintaining a website with information and documents related to the program, and engaging in various outreach efforts and encouraging volunteer programs. Between 2009 and 2018, OCTA participated in 67 EMP public outreach events and meetings and 39 Preserve-specific public outreach events.

## Plan Funding

The primary source of funding for the Plan will derive from the M2 transportation sales tax designed to raise money to improve Orange County's transportation system. As part of the M2 sales tax initiative, at least 5% of the revenues from the freeway program will be set aside for the M2 EMP revenues. There are sufficient funds available through the M2 EMP to cover the development and implementation of the Plan. OCTA is currently in a 10–12 year process to accumulate and establish an endowment that will provide a long-term funding source to cover ongoing Preserve management and monitoring, adaptive management, and responses to changed circumstances, in perpetuity. In the short-term, the current M2 EMP revenue stream is used to cover Plan implementation and administration.

## Plan Administration

OCTA is responsible for implementing the Plan and staffing an NCCP/HCP Administrator position. OCTA has designated Lesley Hill as the NCCP/HCP Administrator. Her role includes overseeing Preserve management and monitoring, coordinating with restoration project sponsors, serving as the primary point of contact with the Wildlife Agencies, ensuring avoidance and minimization measures are implemented pursuant to the Plan, tracking impacts and conservation, assisting with public outreach, and preparing this Annual Report.

The Plan outlines how modifications, Minor Amendments, and Major Amendments can be made to the Plan. This Annual Report summarizes Plan modifications that have been made in collaboration with the Wildlife Agencies that address revisions to restoration project design plans and sponsors, minor Preserve boundary adjustments, and approval of a new restoration project since Plan approval. No Minor or Major Amendments are proposed.