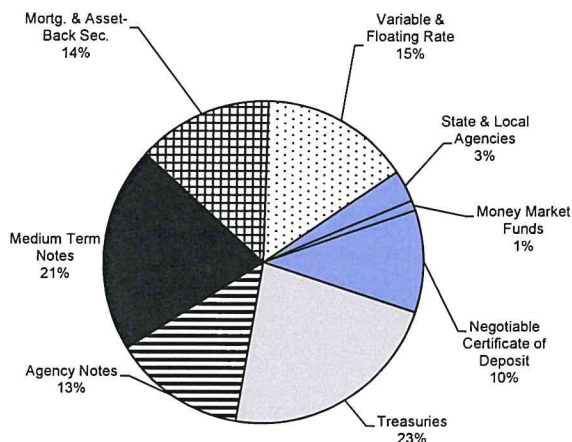


# Investment Manager Diversification and Maturity Schedules

## Logan Circle Partners

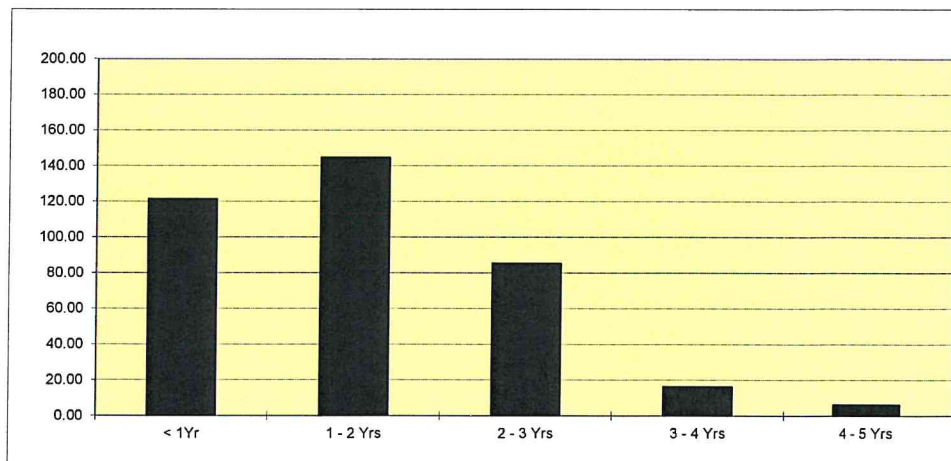
March 31, 2019

### SHORT-TERM PORTFOLIO ( \$373.8 M)



	Book Value	Market Value
Treasuries	\$84,542,271	\$84,756,083
Agency Notes	50,159,159	50,175,443
Medium Term Notes	77,303,394	77,797,760
Mortg. & Asset-Back Sec.	51,115,414	51,314,500
Variable & Floating Rate	56,539,626	56,539,281
State & Local Agencies	11,942,633	11,821,446
Money Market Funds	3,820,624	3,820,624
Negotiable Certificate of Deposit	38,403,364	38,401,956
	<u>\$373,826,486</u>	<u>\$374,627,093</u>

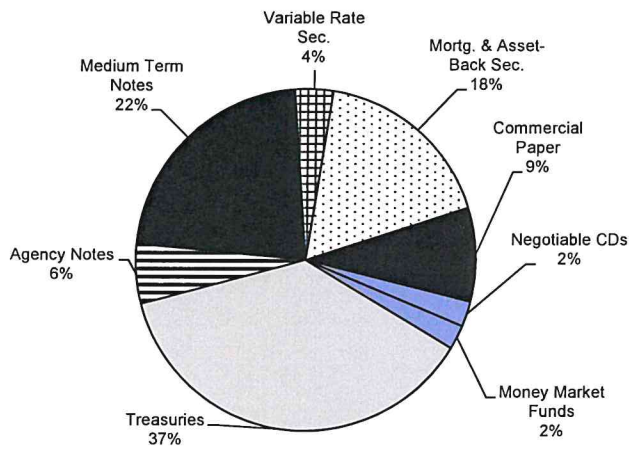
Wtd Avg Life	1.33 Yrs
Duration	0.92 Yrs
Quarter-end Yield	2.51%
TSY Benchmark	2.32%
Gov/Corp Benchmark	2.49%
Quarter Return	1.06%
TSY Benchmark	0.98%
Gov/Corp Benchmark	1.11%
12 Month Return	2.71%
TSY Benchmark	2.72%
Gov/Corp Benchmark	2.94%



# Investment Manager Diversification and Maturity Schedules

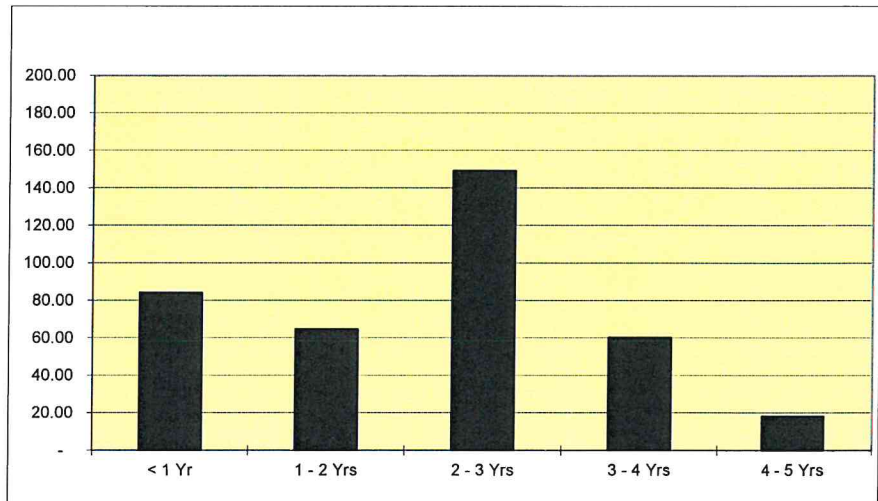
**PFM**  
**March 31, 2019**

## SHORT-TERM PORTFOLIO ( \$375.9 M)



	Book Value	Market Value
Treasuries	\$140,065,505	\$140,647,738
Agency Notes	21,196,045	21,693,241
Medium Term Notes	84,106,325	84,374,153
Variable Rate Sec.	13,607,592	13,800,254
Mortg. & Asset-Back Sec.	65,876,024	66,071,319
Commercial Paper	33,426,366	33,709,689
Negotiable CDs	9,000,000	9,010,330
Money Market Funds	8,659,663	8,659,663
	<u>\$375,937,519</u>	<u>\$377,966,386</u>

Wtd Avg Life	1.93 Yrs
Duration	1.83 Yrs
Quarter-end Yield	2.44%
TSY Benchmark	2.32%
Gov/Corp Benchmark	2.49%
Quarter Return	1.26%
TSY Benchmark	0.98%
Gov/Corp Benchmark	1.11%
12 Month Return	3.12%
TSY Benchmark	2.72%
Gov/Corp Benchmark	2.94%

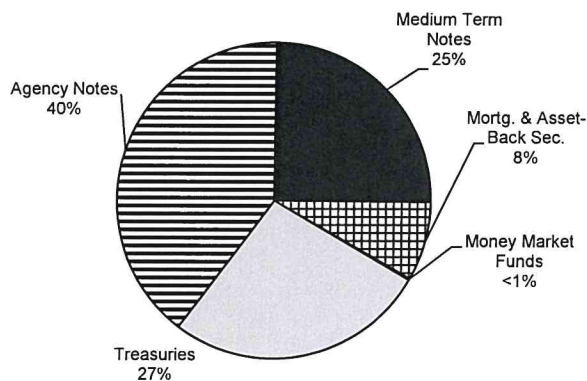


# Investment Manager Diversification and Maturity Schedules

## Chandler Asset Management

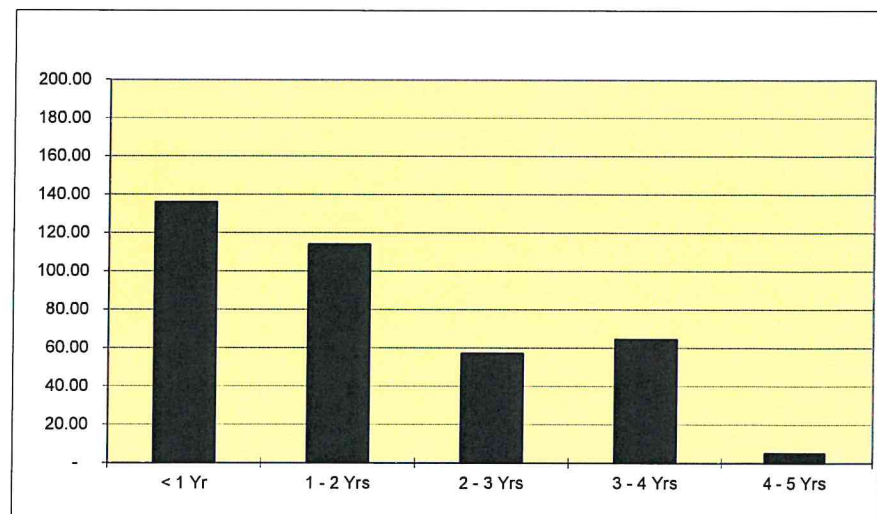
March 31, 2019

### SHORT-TERM PORTFOLIO (\$376.3 M)



	Book Value	Market Value
Treasuries	\$101,254,813	\$100,981,594
Agency Notes	149,971,491	150,477,792
Medium Term Notes	94,215,467	94,841,420
Mortg. & Asset-Back Sec.	30,274,119	30,210,044
Money Market Funds	<u>618,446</u>	<u>618,446</u>
	<u>\$376,334,336</u>	<u>\$377,129,296</u>

Wtd Avg Life	1.67 Yrs
Duration	1.61 Yrs
Quarter-end Yield	2.46%
TSY Benchmark	2.32%
Gov/Corp Benchmark	2.49%
Quarter Return	1.15%
TSY Benchmark	0.98%
Gov/Corp Benchmark	1.11%
12 Month Return	2.97%
TSY Benchmark	2.72%
Gov/Corp Benchmark	2.94%

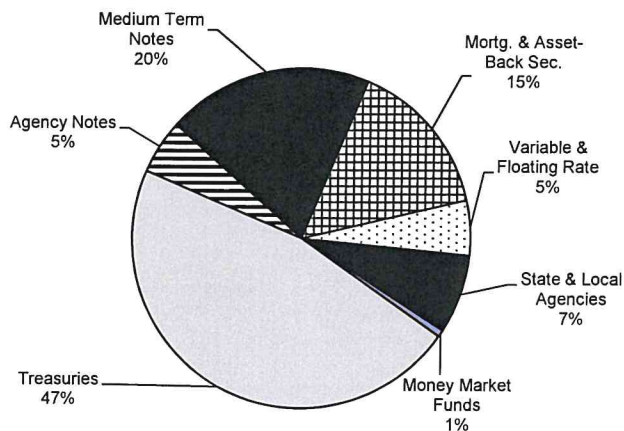


# Investment Manager Diversification and Maturity Schedules

**Payden & Rygel**

**March 31, 2019**

## SHORT-TERM PORTFOLIO (\$377.3 M)



	Book Value	Market Value
Treasuries	\$176,302,766	\$177,287,050
Agency Notes	19,485,323	19,683,702
Medium Term Notes	74,275,489	74,064,616
Mortg. & Asset-Back Sec.	56,778,165	56,840,479
Variable & Floating Rate	19,668,481	19,686,179
State & Local Agencies	28,342,850	28,237,455
Money Market Funds	<u>2,426,693</u>	<u>2,426,693</u>
	<u>\$377,279,765</u>	<u>\$378,226,174</u>

Wtd Avg Life	1.83 Yrs
Duration	1.67 Yrs
Quarter-end Yield	2.51%
TSY Benchmark	2.32%
Gov/Corp Benchmark	2.49%
Quarter Return	1.15%
TSY Benchmark	0.98%
Gov/Corp Benchmark	1.11%
12 Month Return	3.11%
TSY Benchmark	2.72%
Gov/Corp Benchmark	2.94%

