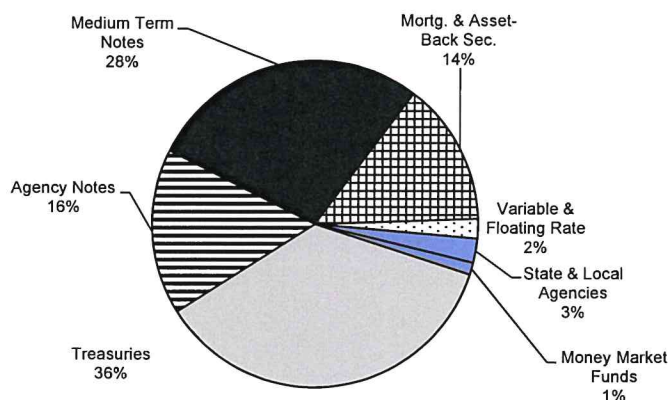


# Investment Manager Diversification and Maturity Schedules

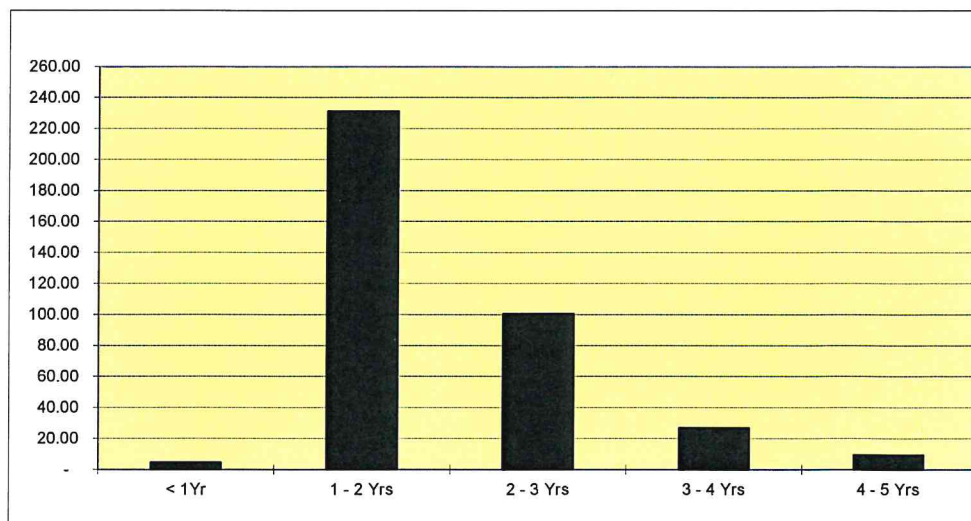
**Logan Circle Partners**  
December 31, 2018

## SHORT-TERM PORTFOLIO ( \$371.9 M )



	Book Value	Market Value
Treasuries	\$133,949,252	\$133,396,934
Agency Notes	60,996,558	60,858,225
Medium Term Notes	103,696,091	103,410,877
Mortg. & Asset-Back Sec.	52,729,100	52,756,225
Variable & Floating Rate	7,219,805	7,191,310
State & Local Agencies	8,942,633	8,870,890
Money Market Funds	4,452,464	4,452,464
	<u>\$371,985,904</u>	<u>\$370,936,925</u>

Wtd Avg Life	1.59 Yrs
Duration	1.39 Yrs
Quarter-end Yield	2.81%
TSY Benchmark	2.53%
Gov/Corp Benchmark	2.78%
Quarter Return	0.91%
TSY Benchmark	1.29%
Gov/Corp Benchmark	1.23%
12 Month Return	1.47%
TSY Benchmark	1.58%
Gov/Corp Benchmark	1.64%

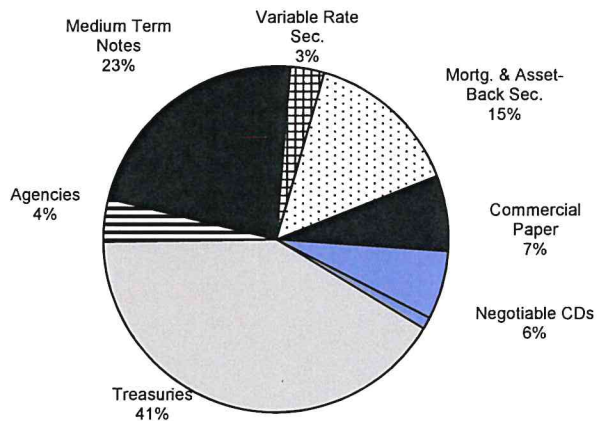


# Investment Manager Diversification and Maturity Schedules

**PFM**

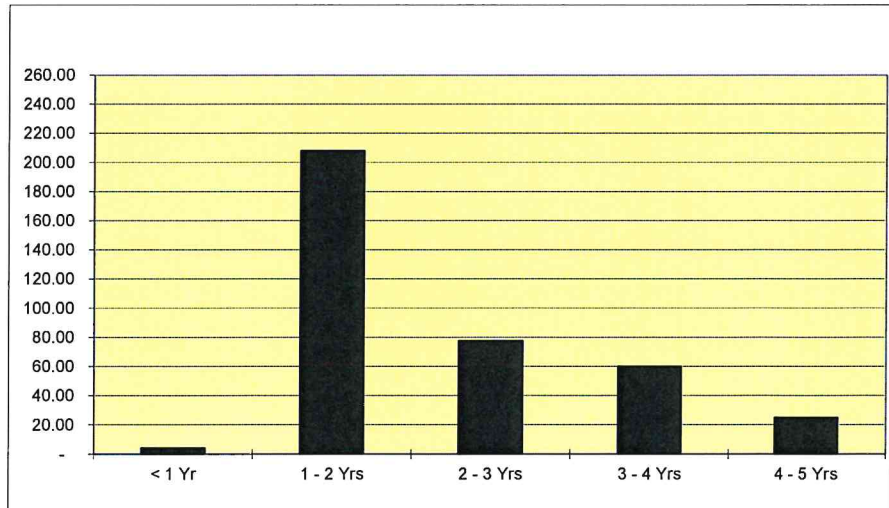
**December 31, 2018**

## SHORT-TERM PORTFOLIO ( \$374.5 M)



	<u>Book Value</u>	<u>Market Value</u>
Treasuries	\$154,112,343	\$153,056,911
Agencies	14,942,016	15,289,872
Medium Term Notes	84,170,616	83,689,050
Variable Rate Sec.	11,958,181	12,045,481
Mortg. & Asset-Back Sec.	54,609,371	54,429,360
Commercial Paper	26,536,512	26,641,802
Negotiable CDs	24,000,000	23,993,670
Money Market Funds	4,155,665	4,155,665
	<u>\$374,484,704</u>	<u>\$373,301,812</u>

Wtd Avg Life	1.69 Yrs
Duration	1.60 Yrs
Quarter-end Yield	2.77%
TSY Benchmark	2.53%
Gov/Corp Benchmark	2.78%
Quarter Return	1.12%
TSY Benchmark	1.29%
Gov/Corp Benchmark	1.23%
12 Month Return	1.67%
TSY Benchmark	1.58%
Gov/Corp Benchmark	1.64%

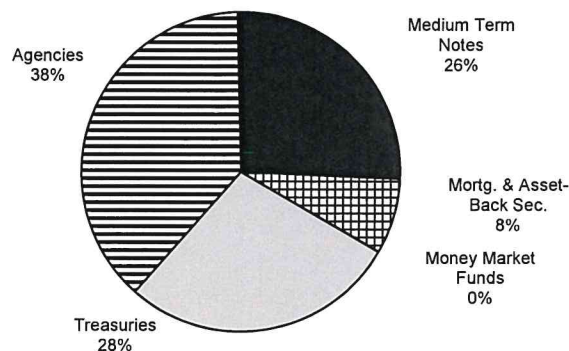


# Investment Manager Diversification and Maturity Schedules

## Chandler Asset Management

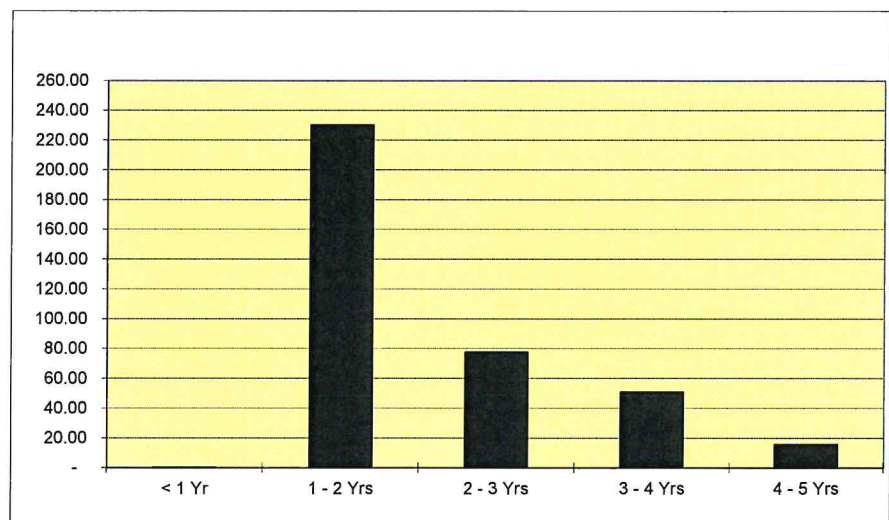
December 31, 2018

### SHORT-TERM PORTFOLIO (\$373.9 M)



	Book Value	Market Value
Treasuries	\$105,237,000	\$104,453,212
Agencies	142,447,755	142,039,188
Medium Term Notes	97,653,131	97,373,350
Mortg. & Asset-Back Sec.	28,507,676	28,317,728
Money Market Funds	84,340	84,340
	<u>\$373,929,903</u>	<u>\$372,267,817</u>

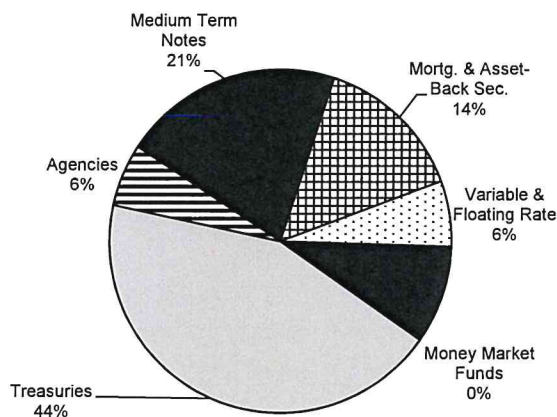
Wtd Avg Life	1.79 Yrs
Duration	1.71 Yrs
Quarter-end Yield	2.72%
TSY Benchmark	2.53%
Gov/Corp Benchmark	2.78%
Quarter Return	1.09%
TSY Benchmark	1.29%
Gov/Corp Benchmark	1.23%
12 Month Return	1.67%
TSY Benchmark	1.58%
Gov/Corp Benchmark	1.64%



# Investment Manager Diversification and Maturity Schedules

**Payden & Rygel**  
**December 31, 2018**

## SHORT-TERM PORTFOLIO (\$375.0 M)



	Book Value	Market Value
Treasuries	\$163,653,242	\$164,524,054
Agencies	22,139,703	22,256,363
Medium Term Notes	77,820,360	77,031,151
Mortg. & Asset-Back Sec.	53,600,153	53,359,708
Variable & Floating Rate	23,091,448	22,968,093
State & Local Agencies	33,834,602	33,362,538
Money Market Funds	<u>878,823</u>	<u>878,823</u>
	<u>\$375,018,331</u>	<u>\$374,380,732</u>

Wtd Avg Life	1.82 Yrs
Duration	1.62 Yrs
Quarter-end Yield	2.78%
TSY Benchmark	2.53%
Gov/Corp Benchmark	2.78%
Quarter Return	1.08%
TSY Benchmark	1.29%
Gov/Corp Benchmark	1.23%
12 Month Return	1.83%
TSY Benchmark	1.58%
Gov/Corp Benchmark	1.64%

