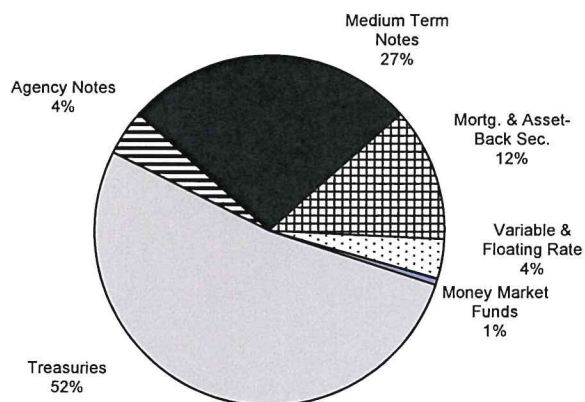


# Investment Manager Diversification and Maturity Schedules

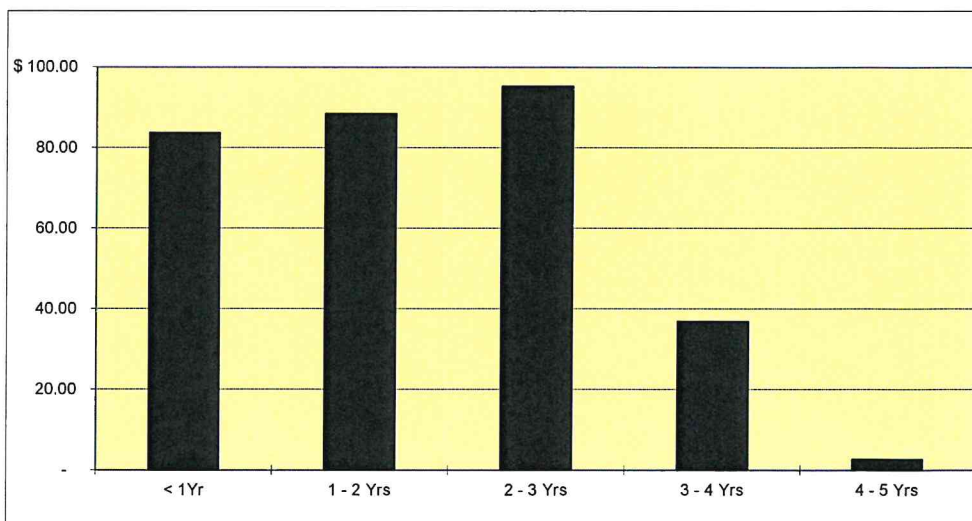
## Logan Circle Partners June 30, 2018

### SHORT-TERM PORTFOLIO ( \$346.3 M)



	Book Value	Market Value
Treasuries	\$181,307,016	\$178,751,273
Agency Notes	14,483,286	14,222,830
Medium Term Notes	93,097,440	91,519,881
Mortg. & Asset-Back Sec.	42,705,259	42,568,326
Variable & Floating Rate	12,637,144	12,629,448
State & Local Agencies	209,210	209,012
Money Market Funds	1,897,182	1,897,182
	<u>\$346,336,537</u>	<u>\$341,797,952</u>

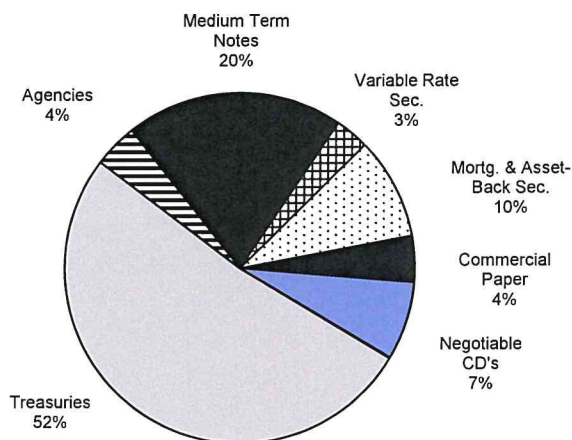
Wtd Avg Life	1.79 Yrs
Duration	1.67 Yrs
Quarter-end Yield	2.46%
TSY Benchmark	2.53%
Gov/Corp Benchmark	2.66%
Quarter Return	0.36%
TSY Benchmark	0.22%
Gov/Corp Benchmark	0.27%
12 Month Return	0.42%
TSY Benchmark	0.08%
Gov/Corp Benchmark	0.20%



# Investment Manager Diversification and Maturity Schedules

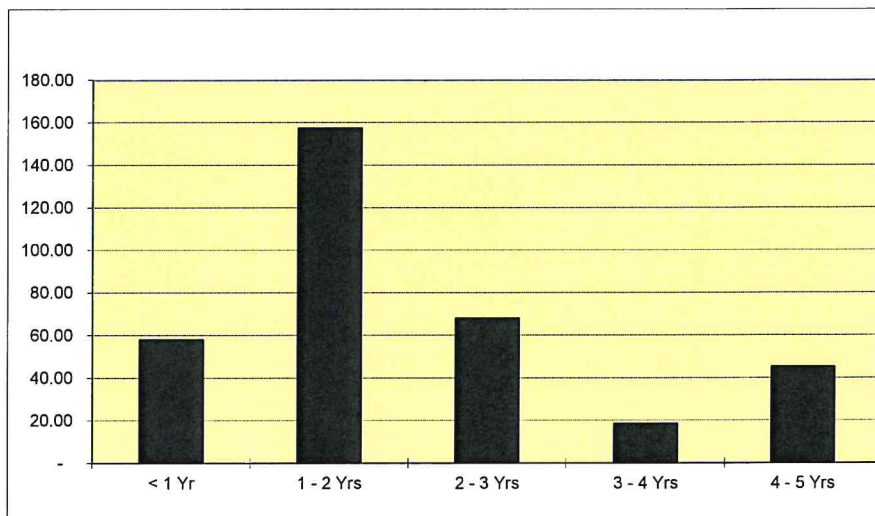
**PFM**  
**June 30, 2018**

## SHORT-TERM PORTFOLIO ( \$346.5 M)



	<u>Book Value</u>	<u>Market Value</u>
Treasuries	\$179,253,489	\$176,522,526
Agencies	\$14,070,232	14,292,858
Medium Term Notes	69,582,574	68,881,738
Variable Rate Sec.	10,881,684	10,995,344
Mortg. & Asset-Back Sec.	32,585,237	32,187,048
Commercial Paper	14,817,746	14,889,750
Negotiable CD's	25,000,001	25,003,000
Money Market Funds	<u>350,208</u>	<u>350,208</u>
	<u>\$346,541,171</u>	<u>\$343,122,472</u>

Wtd Avg Life	1.83 Yrs
Duration	1.73 Yrs
Quarter-end Yield	2.60%
TSY Benchmark	2.53%
Gov/Corp Benchmark	2.66%
Quarter Return	0.33%
TSY Benchmark	0.22%
Gov/Corp Benchmark	0.27%
12 Month Return	0.31%
TSY Benchmark	0.08%
Gov/Corp Benchmark	0.20%

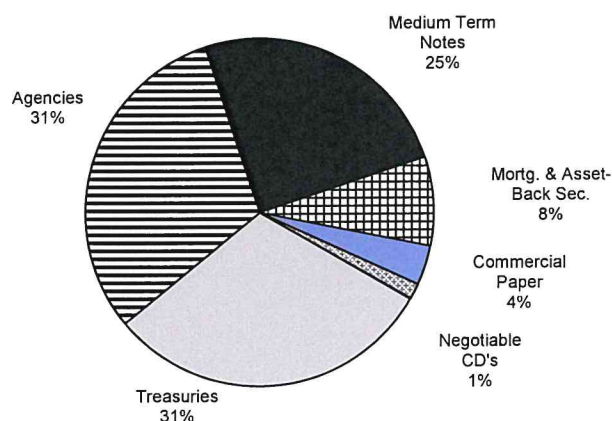


# Investment Manager Diversification and Maturity Schedules

## Chandler Asset Management

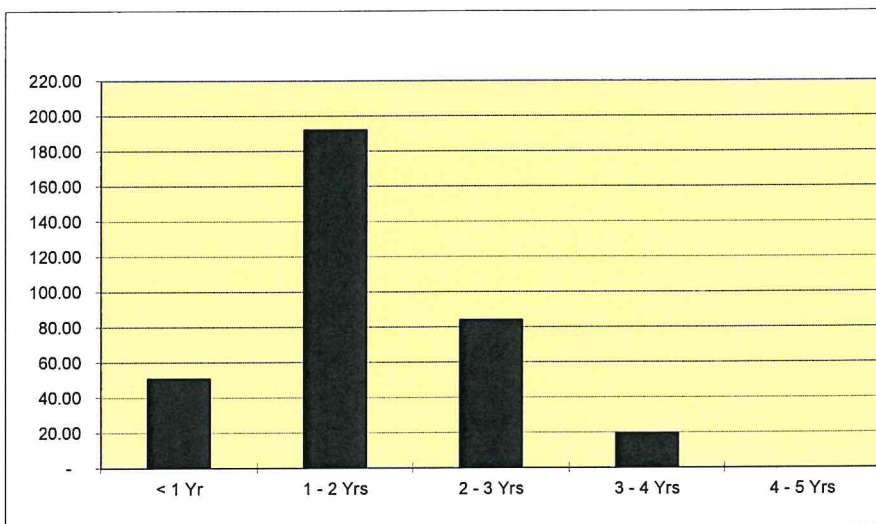
June 30, 2018

### SHORT-TERM PORTFOLIO (\$346.0 M)



	Book Value	Market Value
Treasuries	\$106,120,793	\$104,712,925
Agencies	107,074,505	105,826,942
Medium Term Notes	86,257,178	85,474,359
Mortg. & Asset-Back Sec.	28,507,676	28,192,479
Commercial Paper	12,806,086	12,868,825
Negotiable CD's	4,983,810	4,991,500
Money Market Funds	<u>238,686</u>	<u>238,686</u>
	<u>\$345,988,734</u>	<u>\$342,305,716</u>

Wtd Avg Life	1.67 Yrs
Duration	1.61 Yrs
Quarter-end Yield	2.62%
TSY Benchmark	2.53%
Gov/Corp Benchmark	2.66%
Quarter Return	0.31%
TSY Benchmark	0.22%
Gov/Corp Benchmark	0.27%
12 Month Return	0.27%
TSY Benchmark	0.08%
Gov/Corp Benchmark	0.20%

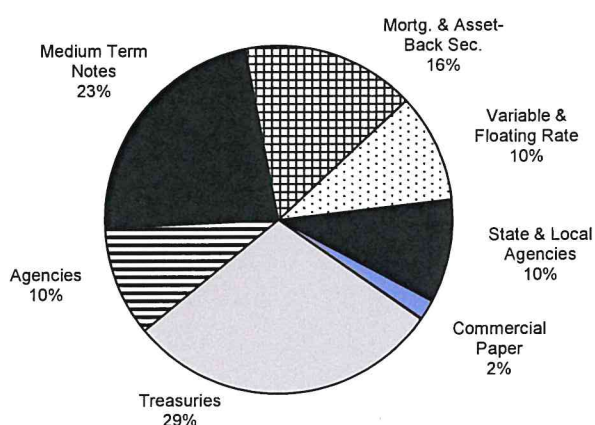


# Investment Manager Diversification and Maturity Schedules

**Payden & Rygel**

**June 30, 2018**

## SHORT-TERM PORTFOLIO (\$346.9 M)



	Book Value	Market Value
Treasuries	\$101,719,310	\$101,061,369
Agencies	35,381,480	35,134,093
Medium Term Notes	78,721,023	77,608,017
Mortg. & Asset-Back Sec.	55,828,217	55,299,881
Variable & Floating Rate	35,107,297	35,131,671
State & Local Agencies	33,440,028	32,969,379
Commercial Paper	6,513,353	6,516,027
Money Market Funds	205,712	205,712
	<u>\$346,916,421</u>	<u>\$343,926,150</u>

Wtd Avg Life	1.81 Yrs
Duration	1.47 Yrs
Quarter-end Yield	2.66%
TSY Benchmark	2.53%
Gov/Corp Benchmark	2.66%
Quarter Return	0.41%
TSY Benchmark	0.22%
Gov/Corp Benchmark	0.27%
12 Month Return	0.58%
TSY Benchmark	0.08%
Gov/Corp Benchmark	0.20%

