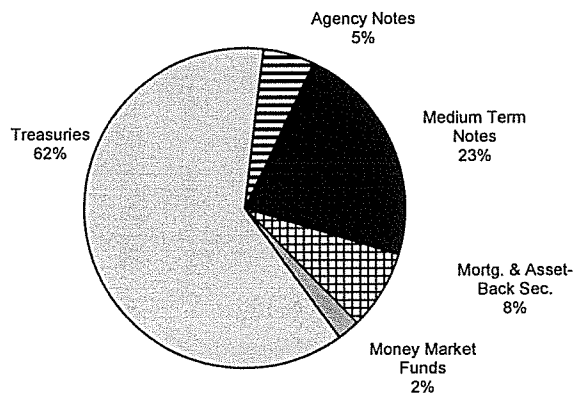


# Investment Manager Diversification and Maturity Schedules

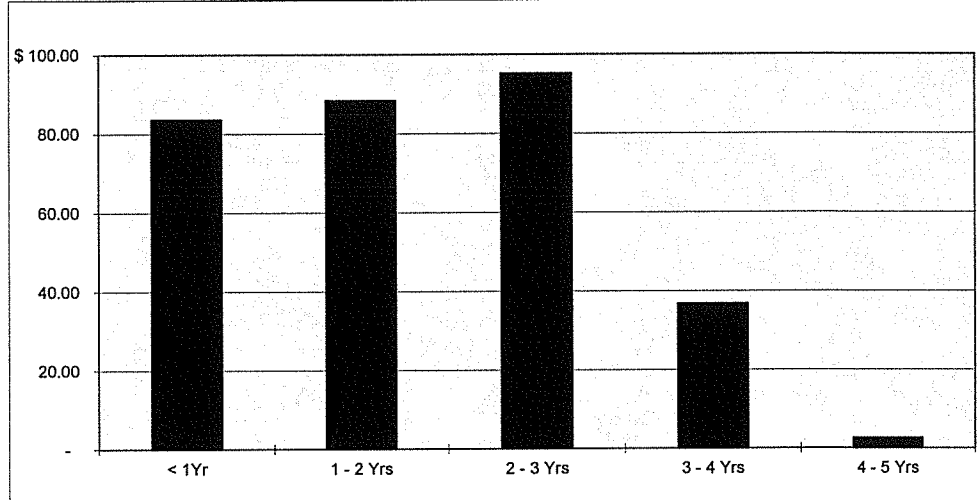
**JP Morgan**  
**March 31, 2018**

## SHORT-TERM PORTFOLIO ( \$306.6 M)



|                          | Book Value           | Market Value         |
|--------------------------|----------------------|----------------------|
| Treasuries               | \$189,727,090        | \$186,634,021        |
| Agency Notes             | 15,918,115           | 15,598,264           |
| Medium Term Notes        | 69,410,146           | 67,221,706           |
| Mortg. & Asset-Back Sec. | 24,583,231           | 24,407,682           |
| Bank Deposit/Cash        | 4,500                | 4,500                |
| Money Market Funds       | <u>6,941,439</u>     | <u>6,941,439</u>     |
|                          | <u>\$306,584,522</u> | <u>\$300,807,612</u> |

|                    |          |
|--------------------|----------|
| Wtd Avg Life       | 1.65 Yrs |
| Duration           | 1.60 Yrs |
| Quarter-end Yield  | 2.37%    |
| TSY Benchmark      | 2.28%    |
| Gov/Corp Benchmark | 2.42%    |
| Quarter Return     | -0.16%   |
| TSY Benchmark      | -0.13%   |
| Gov/Corp Benchmark | -0.17%   |
| 12 Month Return    | 0.38%    |
| TSY Benchmark      | 0.03%    |
| Gov/Corp Benchmark | 0.19%    |

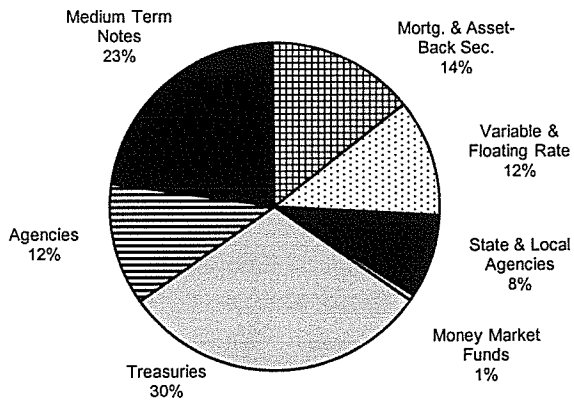


# Investment Manager Diversification and Maturity Schedules

**Payden & Rygel**

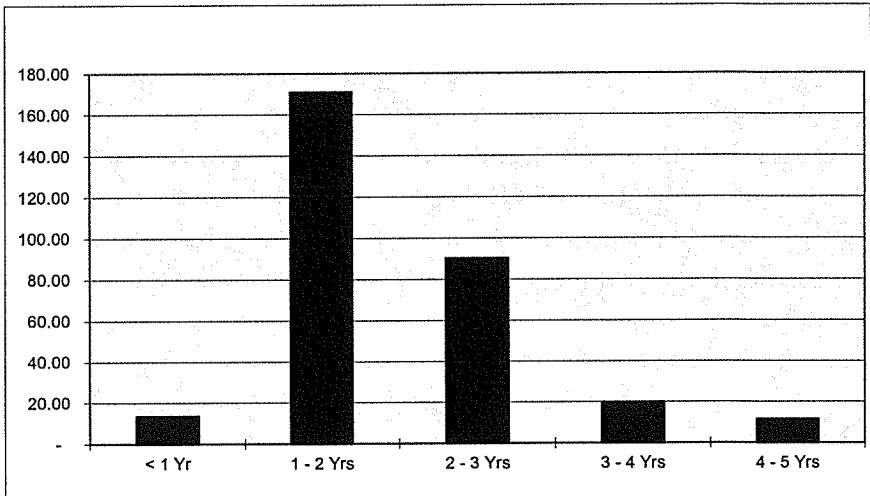
**March 31, 2018**

## SHORT-TERM PORTFOLIO (\$306.2 M)



|                          | Book Value           | Market Value         |
|--------------------------|----------------------|----------------------|
| Treasuries               | \$93,430,878         | \$92,460,140         |
| Agencies                 | 36,816,259           | 36,516,479           |
| Medium Term Notes        | 69,271,289           | 68,089,415           |
| Mortg. & Asset-Back Sec. | 44,140,571           | 43,625,226           |
| Variable & Floating Rate | 35,316,972           | 35,337,996           |
| State & Local Agencies   | 25,344,908           | 24,971,154           |
| Money Market Funds       | <u>1,848,823</u>     | <u>1,848,823</u>     |
|                          | <u>\$306,169,701</u> | <u>\$302,849,235</u> |

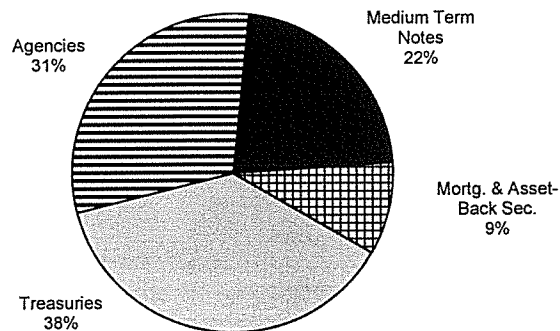
|                    |          |
|--------------------|----------|
| Wtd Avg Life       | 1.88 Yrs |
| Duration           | 1.49 Yrs |
| Quarter-end Yield  | 2.47%    |
| TSY Benchmark      | 2.28%    |
| Gov/Corp Benchmark | 2.42%    |
| Quarter Return     | -0.11%   |
| TSY Benchmark      | -0.13%   |
| Gov/Corp Benchmark | -0.17%   |
| 12 Month Return    | 0.49%    |
| TSY Benchmark      | 0.03%    |
| Gov/Corp Benchmark | 0.19%    |



# Investment Manager Diversification and Maturity Schedules

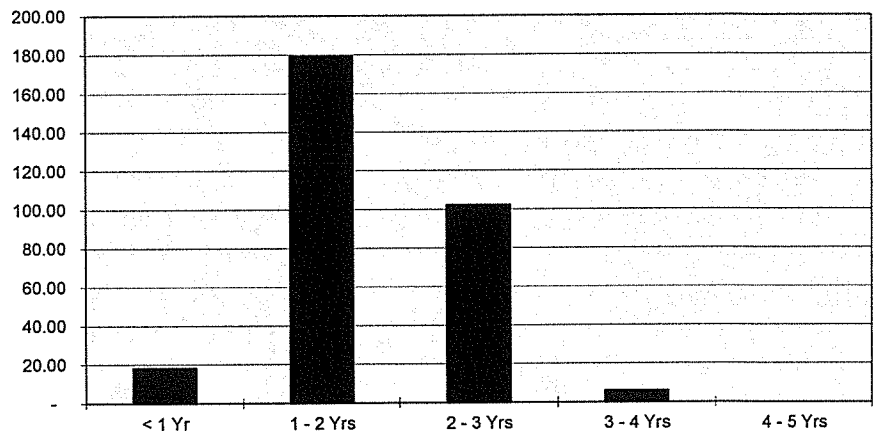
**State Street**  
**March 31, 2018**

## SHORT-TERM PORTFOLIO (\$305.4 M)



|                          | Book Value           | Market Value         |
|--------------------------|----------------------|----------------------|
| Treasuries               | \$115,279,824        | \$114,188,112        |
| Agencies                 | 93,293,605           | 92,151,622           |
| Medium Term Notes        | 68,311,630           | 67,480,948           |
| Mortg. & Asset-Back Sec. | 28,507,676           | 28,178,408           |
| Money Market Funds       | <u>28,357</u>        | <u>28,357</u>        |
|                          | <u>\$305,421,093</u> | <u>\$302,027,446</u> |

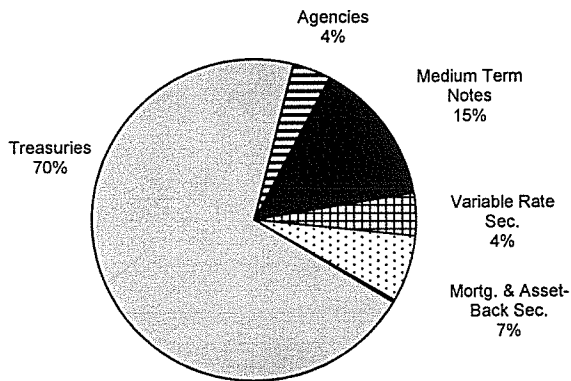
|                    |          |
|--------------------|----------|
| Wtd Avg Life       | 1.86 Yrs |
| Duration           | 1.80 Yrs |
| Quarter-end Yield  | 2.43%    |
| TSY Benchmark      | 2.28%    |
| Gov/Corp Benchmark | 2.42%    |
| Quarter Return     | -0.14%   |
| TSY Benchmark      | -0.13%   |
| Gov/Corp Benchmark | -0.17%   |
| 12 Month Return    | 0.24%    |
| TSY Benchmark      | 0.03%    |
| Gov/Corp Benchmark | 0.19%    |



# Investment Manager Diversification and Maturity Schedules

## Western Asset Management March 31, 2018

### SHORT-TERM PORTFOLIO ( \$305.5 M)



|                          | <u>Book Value</u>    | <u>Market Value</u>  |
|--------------------------|----------------------|----------------------|
| Treasuries               | \$214,909,515        | \$212,400,668        |
| Agencies                 | \$11,495,824         | 11,713,343           |
| Medium Term Notes        | 44,687,071           | 43,931,239           |
| Variable Rate Sec.       | 13,071,684           | 13,195,840           |
| Mortg. & Asset-Back Sec. | 20,635,291           | 20,245,742           |
| Money Market Funds       | <u>706,579</u>       | <u>706,579</u>       |
|                          | <u>\$305,505,964</u> | <u>\$302,193,411</u> |

|                    |          |
|--------------------|----------|
| Wtd Avg Life       | 1.97 Yrs |
| Duration           | 1.85 Yrs |
| Quarter-end Yield  | 2.35%    |
| TSY Benchmark      | 2.28%    |
| Gov/Corp Benchmark | 2.42%    |
| Quarter Return     | -0.16%   |
| TSY Benchmark      | -0.13%   |
| Gov/Corp Benchmark | -0.17%   |
| 12 Month Return    | 0.34%    |
| TSY Benchmark      | 0.03%    |
| Gov/Corp Benchmark | 0.19%    |

