

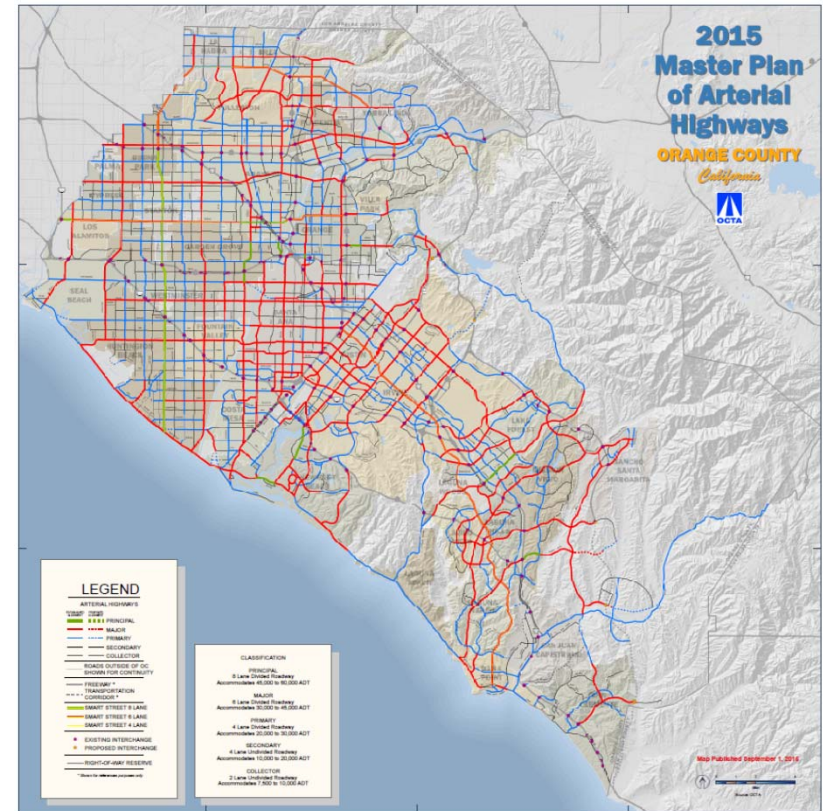


Guidance for Administration of the Orange County Master Plan of Arterial Highways Related to Complete Streets

MPAH Overview

- Developed in 1950s
- Linked to Measure M eligibility in 1989
- OCTA became the administrator in 1995
- Updated in 2011:
 - More flexibility to support complete streets and Complete Streets Act (AB 1358 – Chapter 658, Statutes 2008)

MPAH – Master Plan of Arterial Highways
OCTA – Orange County Transportation Authority
AB – Assembly Bill



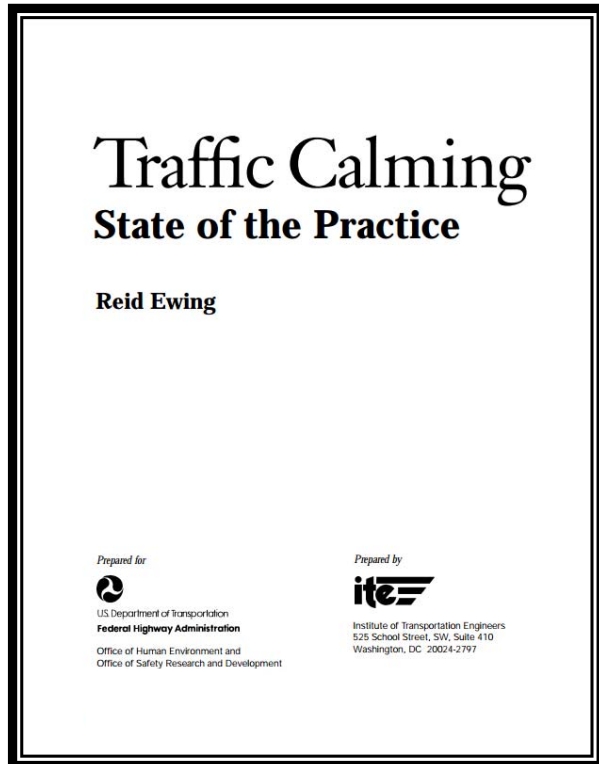
Complete Streets, Traffic Calming, and MPAH

- Complete streets policies intended to address the travel needs of all users
- Traffic calming focused on speed or volume reduction to improve users' safety
- Local agencies requested modifying the existing MPAH traffic calming policy
 - Current policy precludes traffic calming measures on higher-capacity arterials, even when level of service is not impacted

2017 Guidance Update

- Summer 2016 – The TAC Appointed an Ad Hoc Committee to:
 - Determine if the MPAH traffic calming policy needed updating
- The Ad Hoc Committee met three times and determined:
 - Changes were necessary to support Complete Streets
 - Traffic calming measures needed to be more clearly defined
 - Permitted, conditional, and prohibited treatments needed to be identified

Types of Traffic Calming Measures



- Identified two types of traffic calming:
 - Speed control measures
 - Volume control measures

Speed Control Measures (Examples)

Vertical Treatments

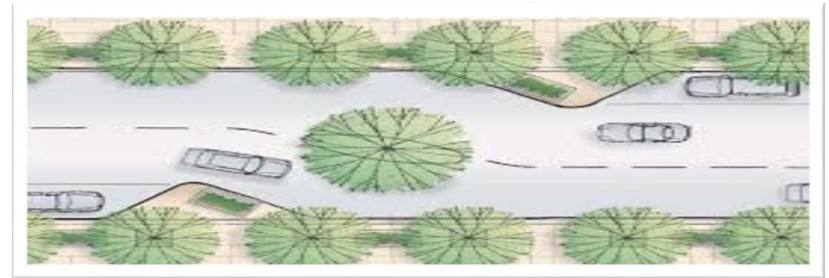


Speed Hump



Raised Intersection

Horizontal Treatments



Chicane



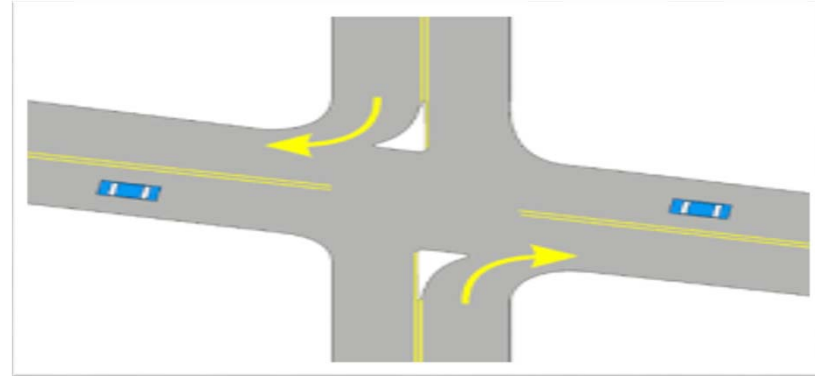
Traffic Circle

Volume Control Measures (Examples)



Partial Closure

Forced Turn Islands



Full Closure

Proposed Policy

PROPOSED POLICY	Collector (Two Lanes Undivided)	Divided Collector (Two Lanes Divided)	Secondary (Four Lanes Undivided)	Primary (Four Lanes Divided)	Major (Six Lanes Divided)	Principal (Eight Lanes Divided)
Speed Control Measures (Horizontal Measures)	Allowed (Revised Policy)		Conditional (New Policy)			
Speed Control Measures (Vertical Deflections)			Prohibited (Clarified-Previous Policy Maintained)			
Volume Control Measures	Prohibited (Clarified-Previous Policy Maintained)					

Next Steps

- If recommendations are approved by the Board of Directors:
 - Guidance will be updated and made available to local agencies
 - Administration of the MPAH traffic calming policy will be modified