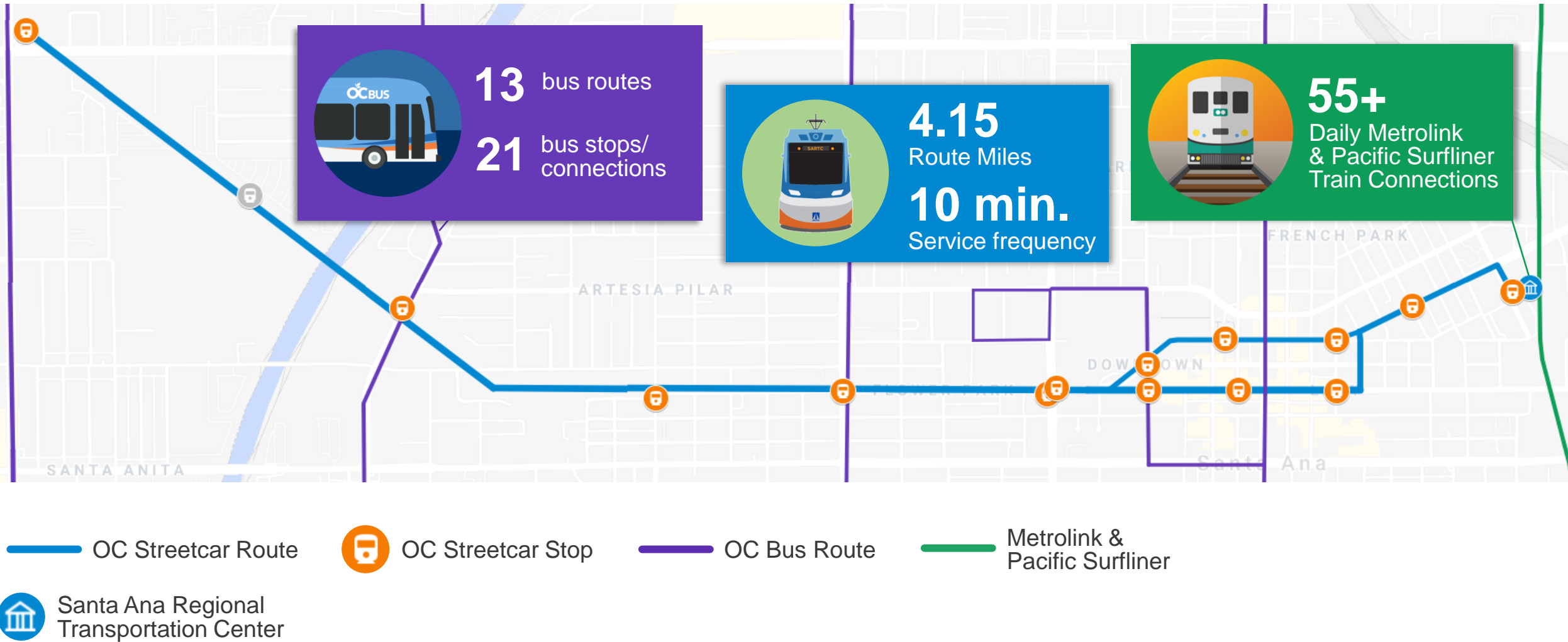
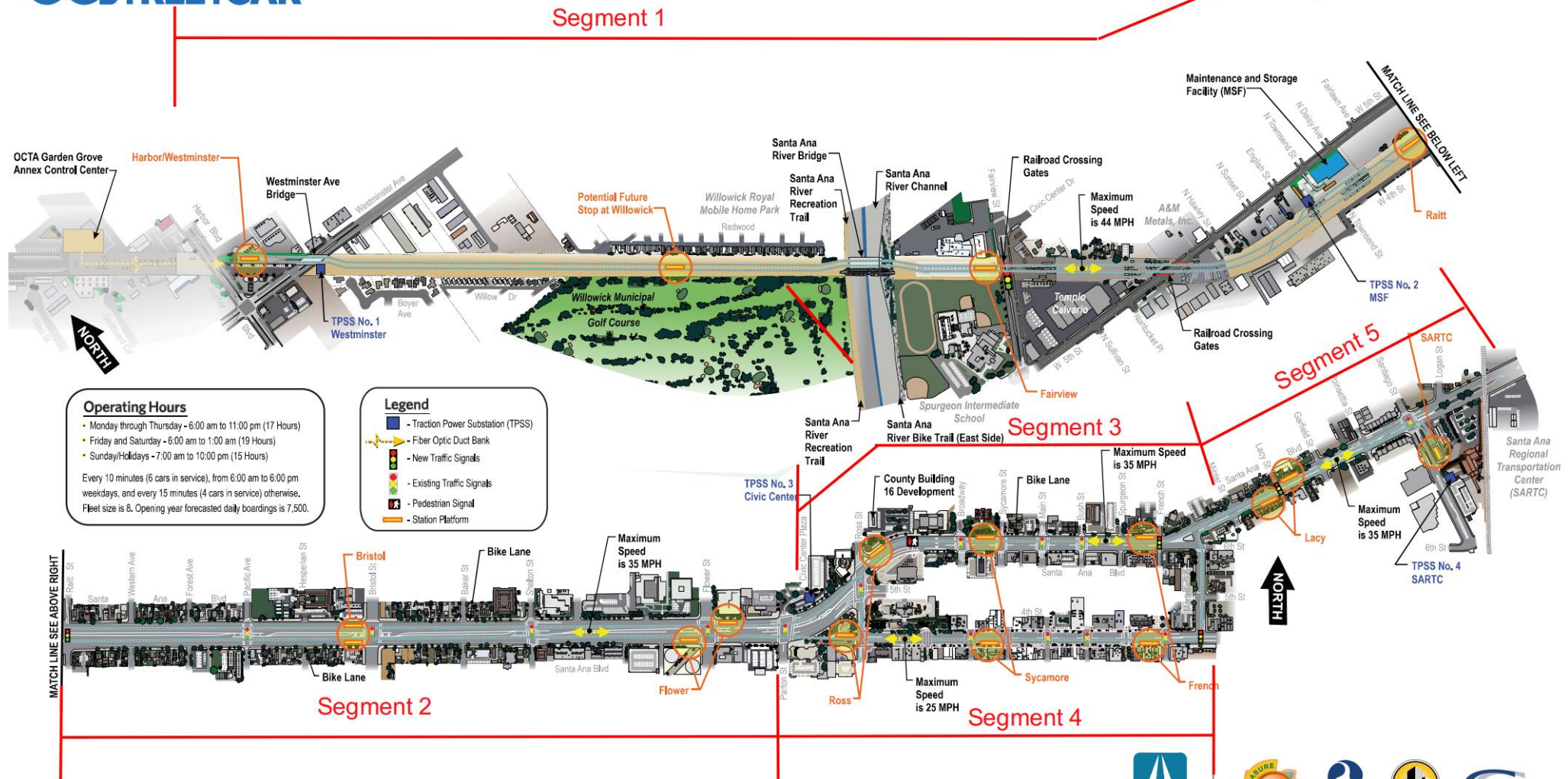


OC Streetcar Project Quarterly Update

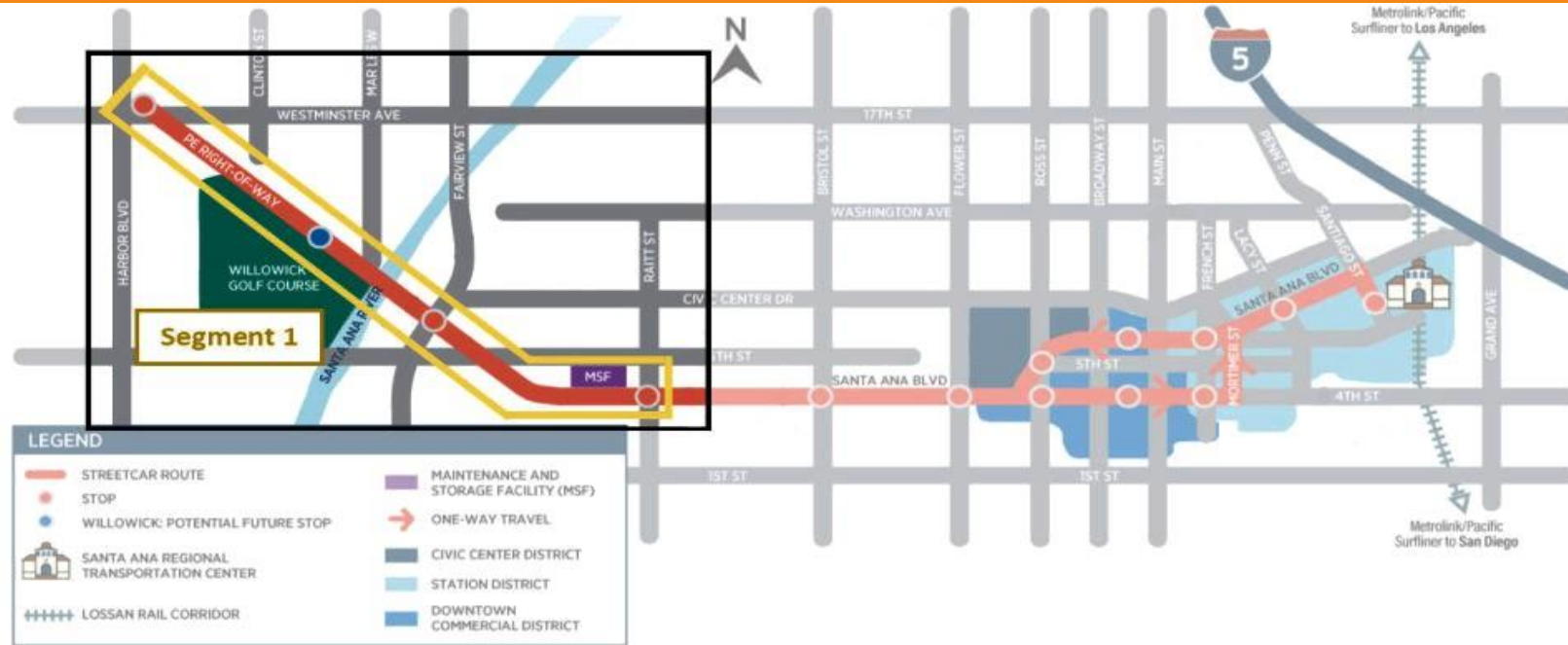
Transit Connectivity



OC Streetcar Segments 1 to 5



Construction – Segment 1



- Pacific Electric Right-of-Way (PEROW)
 - Substantial completion of the Santa Ana River and Westminster bridges, and Harbor Station Platform with ongoing placement of concrete plinths and rails.
- Maintenance and Storage Facility
 - Construction continues and includes remaining installation of exterior walls and roof insulation, conduit and piping, girder painting, other interior improvements, and tracks.

Harbor Station Platform



Westminster and Santa Ana River Bridges



Westminster Bridge Plinths



Santa Ana River Bridge Plinths

Santa Ana River Bridge



Ballast Tracks within the PEROW



Maintenance and Storage Facility



- 5,800 sf office
- 28,670 sf shop/storage
- 3,400 sf carwash building
- Wye track
- Can accommodate up to 15-16 vehicles

Maintenance and Storage Facility (Cont.)



Exterior Walls



Tracks within the Service and Inspection Pit

Maintenance and Storage Facility (Cont.)

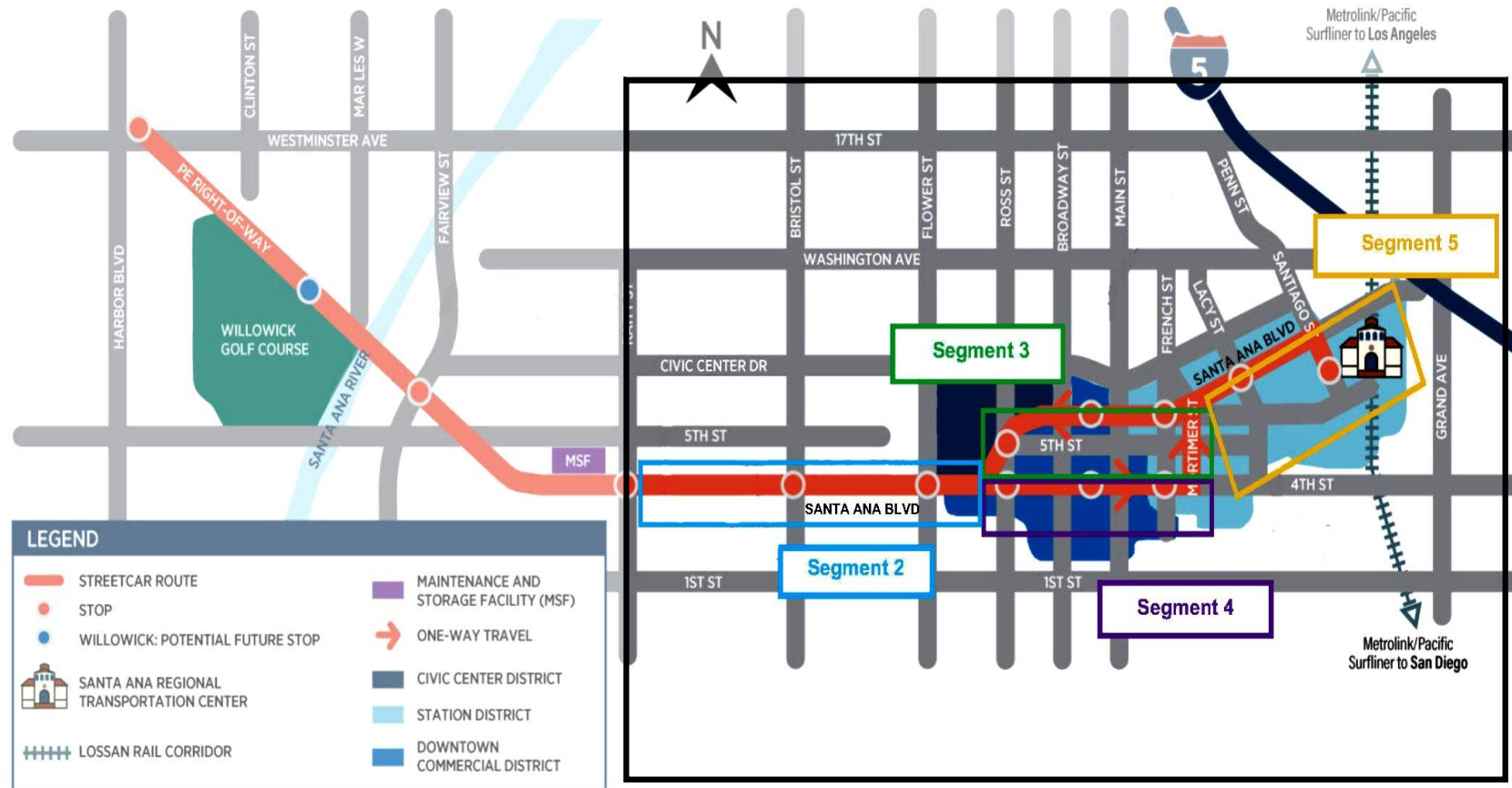


Interior Walls, Piping and Heating, Ventilation, and Air Conditioning



Embedded Track

Construction – Segments 2 through 5



- Key completions in Segments 2, 3, 4, and 5

Progress on Segment 2B

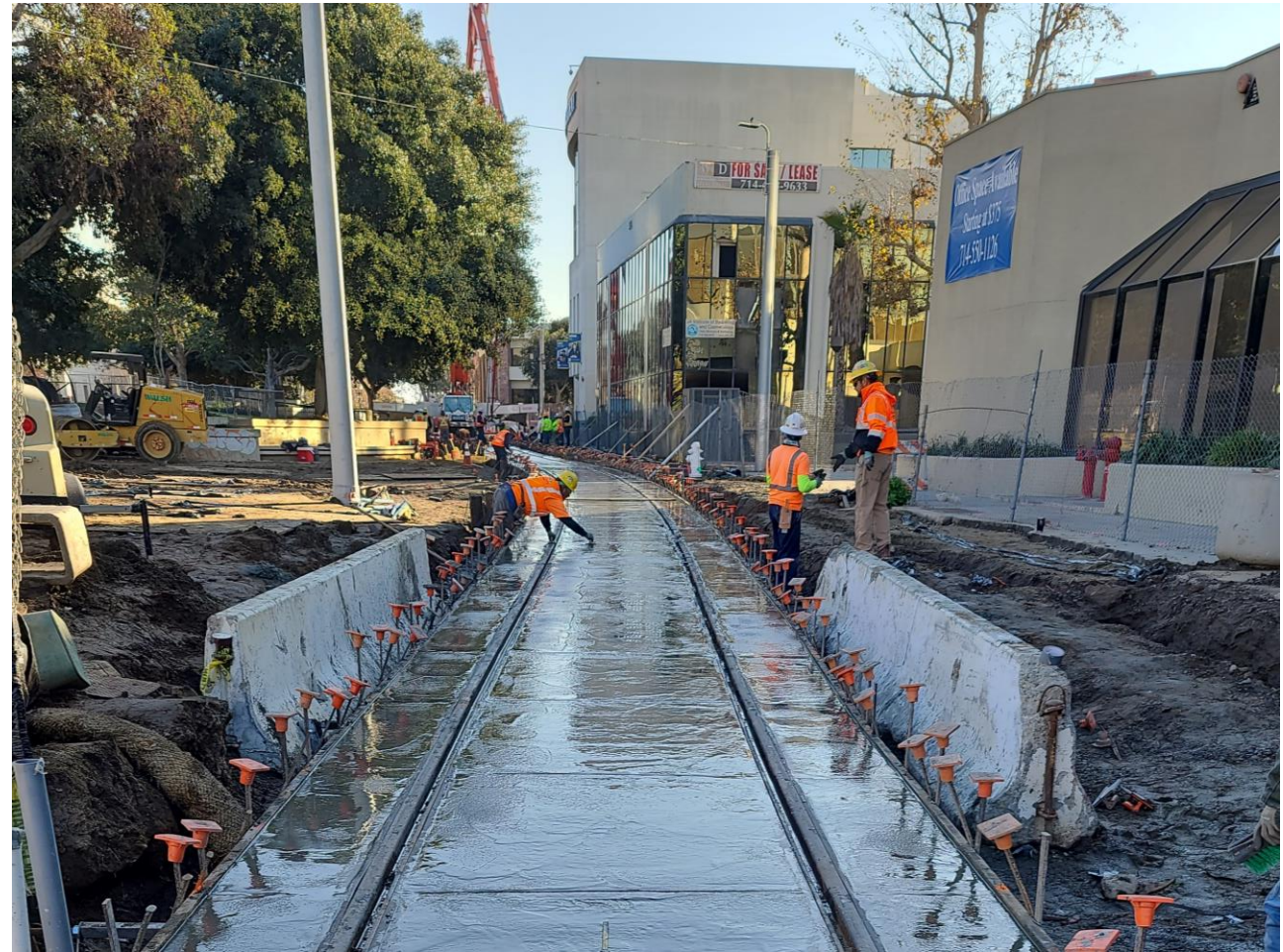


Bristol Street to Flower Street



Bristol Side Station Platforms

Progress on Segment 3



Embedded Track through Sasscer Park

Progress on Segment 4 (Fourth Street)



Between Broadway and Ross Street

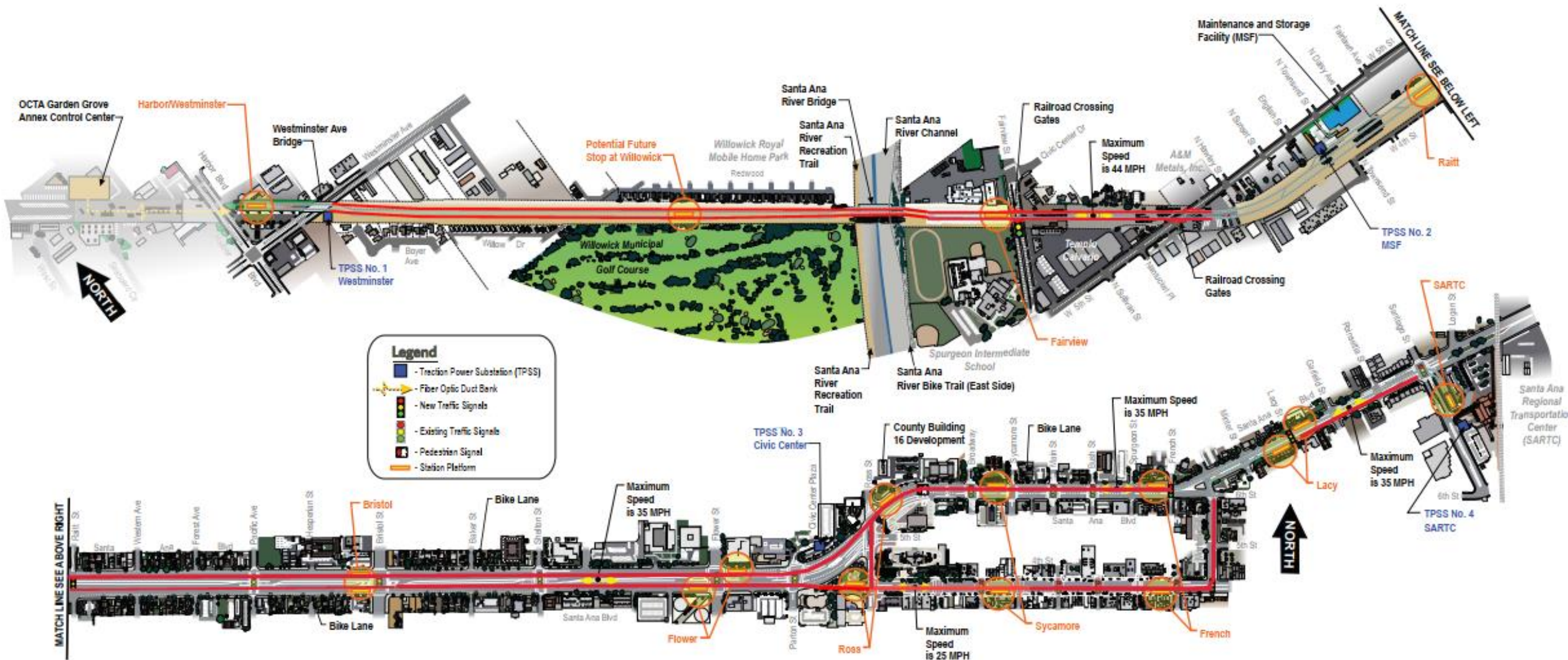
Progress on Segment 5



Embedded Track – Near Garfield Street



Track Installation Progress



Upcoming Construction Activities

- Segment 1 – Complete track work on bridges and within PEROW.
- Maintenance and Storage Facility – Continue site and building work to ensure significant completion for vehicle storage. Start track work to building.
- Segment 2 – Significantly complete the remaining work, including asphalt concrete paving and start conditional acceptance with City of Santa Ana (City) staff.
- Segment 4 – Complete installation of pavers, electrical, and overhead contact system items. Continue conditional acceptance with City staff.
- Segment 5 – Start trackwork in westbound direction. Continue excavation for Santa Ana Regional Transportation Center station. Start work at Santiago Street intersection.
- Continue station platforms at various locations.
- Installation of new traffic signal poles at many intersections.
- Installation of remaining overhead catenary system poles.
- Installation of Traction Power Substations.

Vehicles

- Cars 1-7 are in the final stages of manufacturing with installation of the last remaining vehicle components.
 - Most of the action items from the First Article Inspection of Car 1 were signed off at reinspection with remaining items to be closed in early 2023.
 - Car 8 is in final assembly and preparations are underway to commence static and dynamic testing in first quarter 2023.
- Staff returned to Siemens in December 2022 to inventory and approve additional items and discuss the vehicle delivery schedule and warranty extension for spare parts and special tools.



Project Budget and Cost Status

As of November 30, 2022

SCC CODE	DESCRIPTION	APPROVED FFGA BUDGET	APPROVED OCTA BUDGET*	COMMITMENTS	OCTOBER 2022 EXPENDITURES	CURRENT EXPENDITURES	CURRENT FORECAST	PROPOSED FFGA BUDGET / FORECAST VARIANCE
10	GUIDEWAY & TRACK ELEMENTS	\$48,334,164	\$48,803,358	\$48,275,212	\$41,124,753	\$41,804,234	\$48,275,212	\$528,146
20	STATIONS, STOPS, TERMINALS, INTERMODAL	\$9,353,108	\$9,785,451	\$9,207,441	\$3,945,576	\$4,037,002	\$9,507,441	\$278,010
30	SUPPORT FACILITIES: YARDS, SHOPS, ADMIN. BLDGS	\$43,125,724	\$47,073,200	\$46,812,640	\$23,886,018	\$25,796,179	\$47,337,640	(\$264,440)
40	SITework & SPECIAL CONDITIONS	\$84,725,622	\$103,699,790	\$93,933,461	\$78,058,602	\$79,829,500	\$106,402,485	(\$2,702,695)
50	SYSTEMS	\$63,722,009	\$72,278,941	\$74,052,057	\$43,078,552	\$45,822,973	\$74,497,789	(\$2,218,848)
CONSTRUCTION SUBTOTAL (10-50)		\$249,260,628	\$281,640,740	\$272,280,811	\$190,093,501	\$197,289,888	\$286,020,567	(\$4,379,827)
60	ROW, LAND, EXISTING IMPROVEMENTS	\$8,604,055	\$7,174,328	\$6,822,061	\$6,762,598	\$6,762,597	\$7,174,328	\$0
70	VEHICLES	\$57,709,177	\$63,137,294	\$59,460,278	\$34,332,880	\$34,801,816	\$63,137,294	\$0
80	PROFESSIONAL SERVICES	\$74,414,933	\$139,815,499	\$121,352,527	\$88,817,235	\$90,856,691	\$135,435,672	\$4,379,827
SUBTOTAL (10-80)		\$389,988,793	\$491,767,860	\$459,915,678	\$320,006,215	\$329,710,992	\$491,767,860	\$0
90	UNALLOCATED CONTINGENCY	\$17,771,172	\$17,771,172	\$0	\$0	\$0	\$17,771,172	\$0
100	FINANCE CHARGES	\$0	\$0	\$0	\$0	\$0	\$0	\$0
TOTAL PROJECT (10-100)		\$407,759,966	\$509,539,032	\$459,915,678	\$320,006,215	\$329,710,992	\$509,539,032	\$0

*Approved by the OCTA Board December 13, 2021

SCC = Federal Transit Administration Standard Cost Category

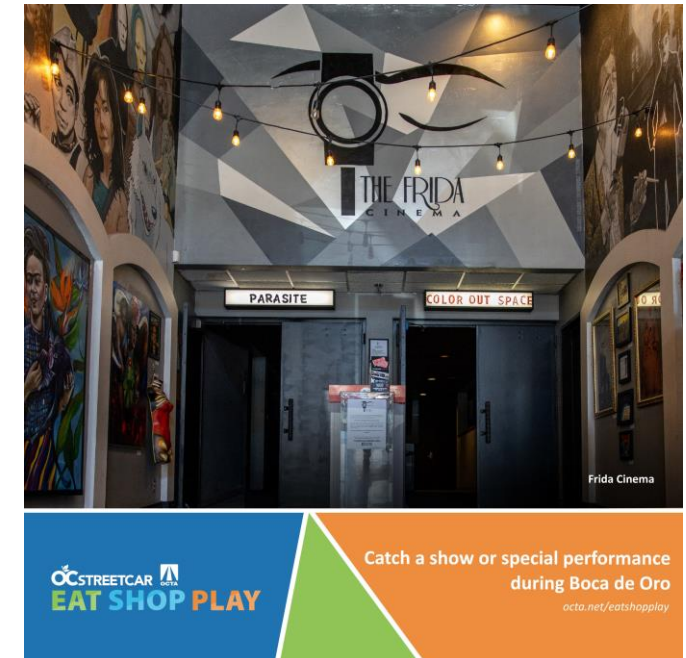
FFGA - Full Funding Grant Agreement

Public Outreach Program

- ☐ Fourth Street Business Outreach
- ☐ City Council
- ☐ Field Meetings
- ☐ Door-to-Door Outreach
- ☐ Downtown Business Associations
- ☐ Eat Shop Play Program
- ☐ Construction Alerts
- ☐ Crowd Fence Covers
- ☐ Parking Structure Banners
- ☐ Eat Shop Play Banners
- ☐ Wayfinding Banners
- ☐ Newspaper, Radio, and Spotify Ads
- ☐ Radio Remotes
- ☐ E-toolkits
- ☐ Movie Theater ads
- ☐ Electronic Billboards
- ☐ Bus Ads
- ☐ Geo-fencing
- ☐ Go-Pro Videos
- ☐ Tours
- ☐ Eat Shop Play Walking Map
- ☐ Lunch Meet-Ups



* DTSA – Downtown Santa Ana



[Eat, Shop, Play Advertisement Video](#)