



Measure M2 Environmental Mitigation Program Update



- Measure M2 (OC Go) approved - November 2006
- Innovative Freeway Environmental Mitigation Program (EMP)
 - Offsets biological impacts of 13 OC Go freeway projects
 - Purchase of conservation lands (Preserves)
 - Provides funding for habitat restoration
- Approximately 5% of the OC Go Freeway Program revenue



EMP Components
















- Conservation Plan
- Environmental documents
- Clean Water Act permits
- Streamlined permitting through partnerships with
 - California Department of Transportation (Caltrans)
 - State and federal wildlife agencies
 - State and federal regulatory agencies
- Support from environmental community



Conservation Planning Process and Covered Species



- Well-defined, achievable project
- Necessary baseline information
- Appropriate regulatory process
- A conservation strategy that works
- Good partners

BIRDS				
COMMON NAME	Cactus wren	Coastal California gnatcatcher	Least Bell's vireo	Southwestern willow flycatcher
REPTILES				
COMMON NAME	Coast horned lizard	Orangethroat whiptail	Western pond turtle	
PLANTS				
COMMON NAME	Intermediate mariposa lily	Many-stemmed dudleya	Southern tarplant	
MAMMALS				
COMMON NAME	Bobcat	Mountain lion		
FISH				
COMMON NAME	Arroyo chub			



OCTA Preserves and Restoration Projects

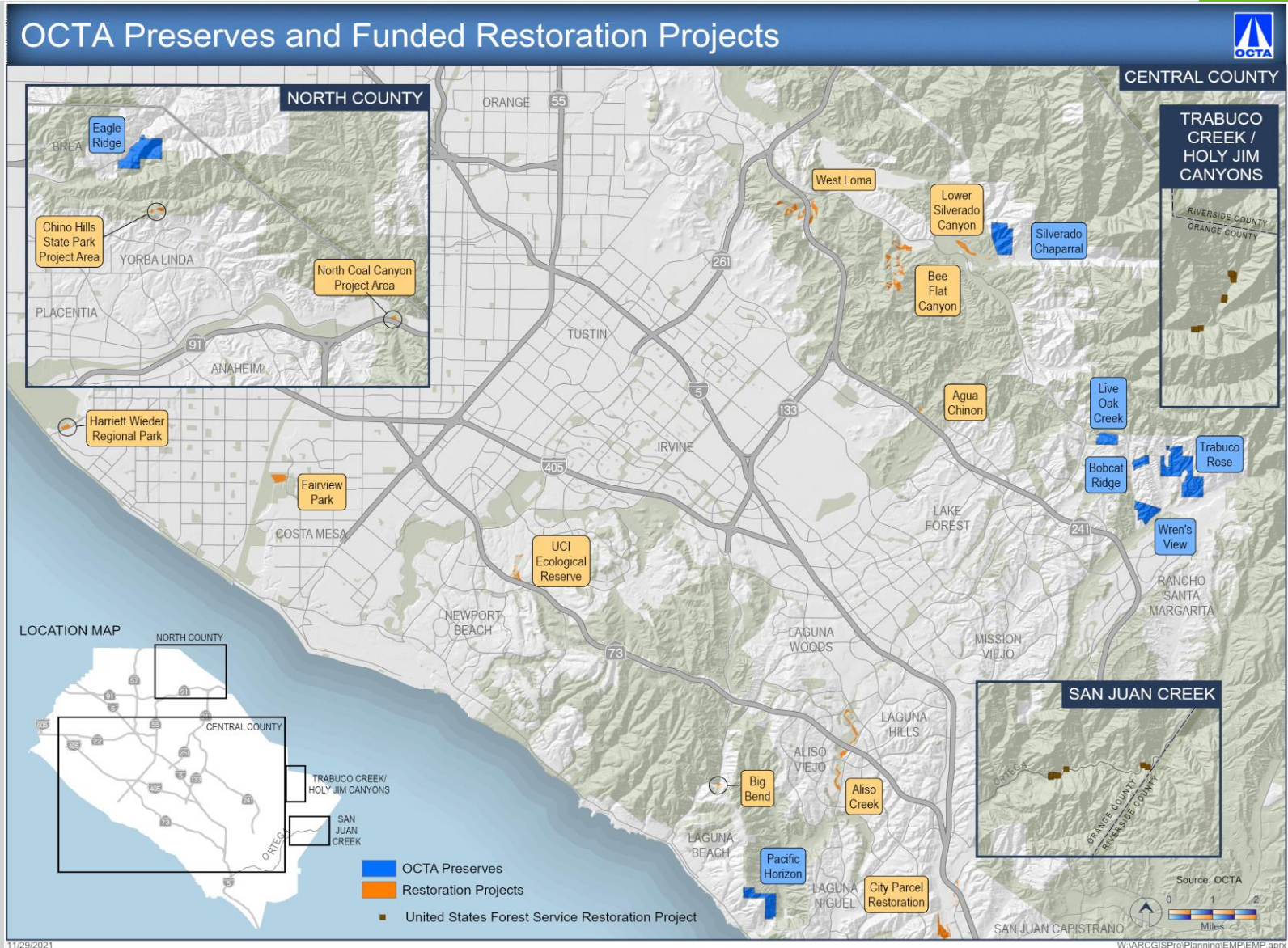


- Seven Preserves acquired and permanently protected
 - 1,300 acres
- 11 restoration projects
 - 350 acres
 - Native habitat
- One dam removal project





Acquisition and Restoration





Conservation Plan Annual Report Overview



Covers:

- Activities in 2020

Includes

- Freeway Project Status/Impact
- Covered Activities on Preserves
- Progress of Restoration Projects
- Plan Administration
- Endowment Establishment
- Public Outreach

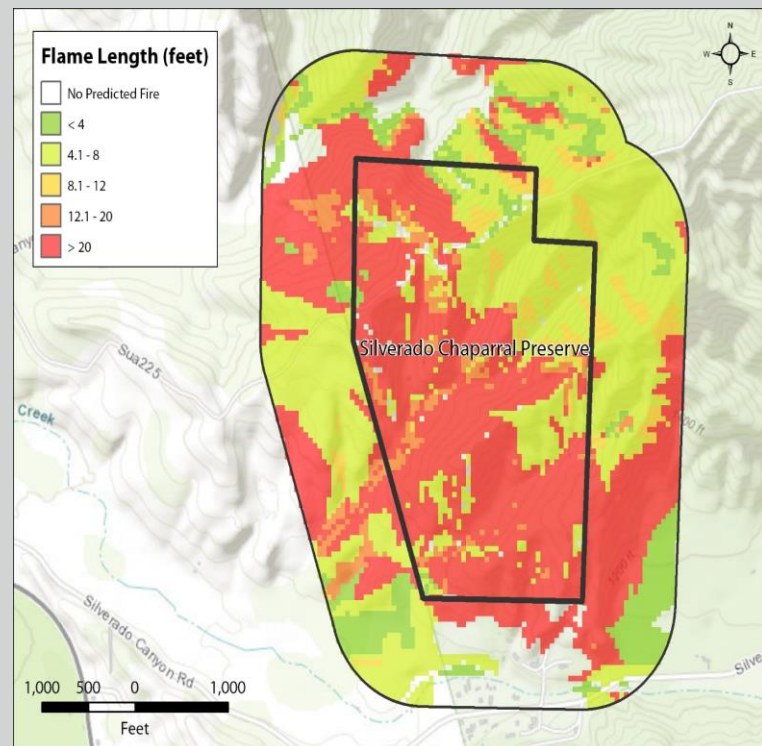
Approved by Wildlife Agencies





Components

- Preserve specific
- Modeling of fire behavior
- Sensitive resources mapped (avoid if possible)
- Guidelines for decision-making at all stages
- Approvals by OCFA and the Wildlife Agencies
- Publicly available





State and Federally Recognized Program



- Caltrans Advance Mitigation Program
- Federal Highway Administration Case Study
 - Published in June 2021





Current EMP Status and Next Steps



- Draft 2021 Conservation Plan Annual Report
- Complete remaining Fire Management Plans
- Coordinate and assist with the freeway project permitting/coordination
- Monitor and provide updates on the endowment establishment
- Oversee the management of the seven OCTA Preserves
- Begin the process for transferring the Preserves to a land management entity
- Continue docent-led public hikes and equestrian ride program