

Newport Transportation Center Relocation Feasibility Study Update



Orange County Transportation Authority



Background

- **NTC Opened for Service in 1991**
 - Hub for OC Bus service in the City serving Fashion Island employment, medical, and recreational centers
 - Key connection point for four OC Bus routes serving coastal and central Orange County
- **OCTA Study in 2023-2024**
 - Explored transit supportive development following the City's interest in relocating fire station or constructing pickleball courts on NTC site
 - Study found relocation of NTC, or non-transit uses were not viable under current conditions
- **City Council requests City staff explore relocation of Fire Station No. 3 to current NTC site in June 2025**
 - City requests a joint study with OCTA to evaluate NTC relocation

City – City of Newport Beach
OCTA – Orange County Transportation Authority
No. – Number
NTC – Newport Transportation Center
Study – Newport Transportation Center Improvement Study



Study Progress

- October 27, 2025: Board Action to Initiate Study
- December 15, 2025: Cooperative Agreement with City of Newport Beach Executed
- January 28, 2026: Jointly Selected Consultant Contract Executed
- February 10, 2026: Project Development Team Study Kickoff Meeting
- March 16, 2026: Project Development Team Meeting



Summary of Project Development Team Meetings

- Attendees included OCTA, City, and consultant staff
- In February 2026, the Project Development Team discussed overall project approach, three proposed candidate sites for potential evaluation, and data collection needs
- In March 2026, the Project Development Team discussed study goals and objectives, evaluation criteria framework, and provided an overview of site visits conducted by OCTA Operations staff

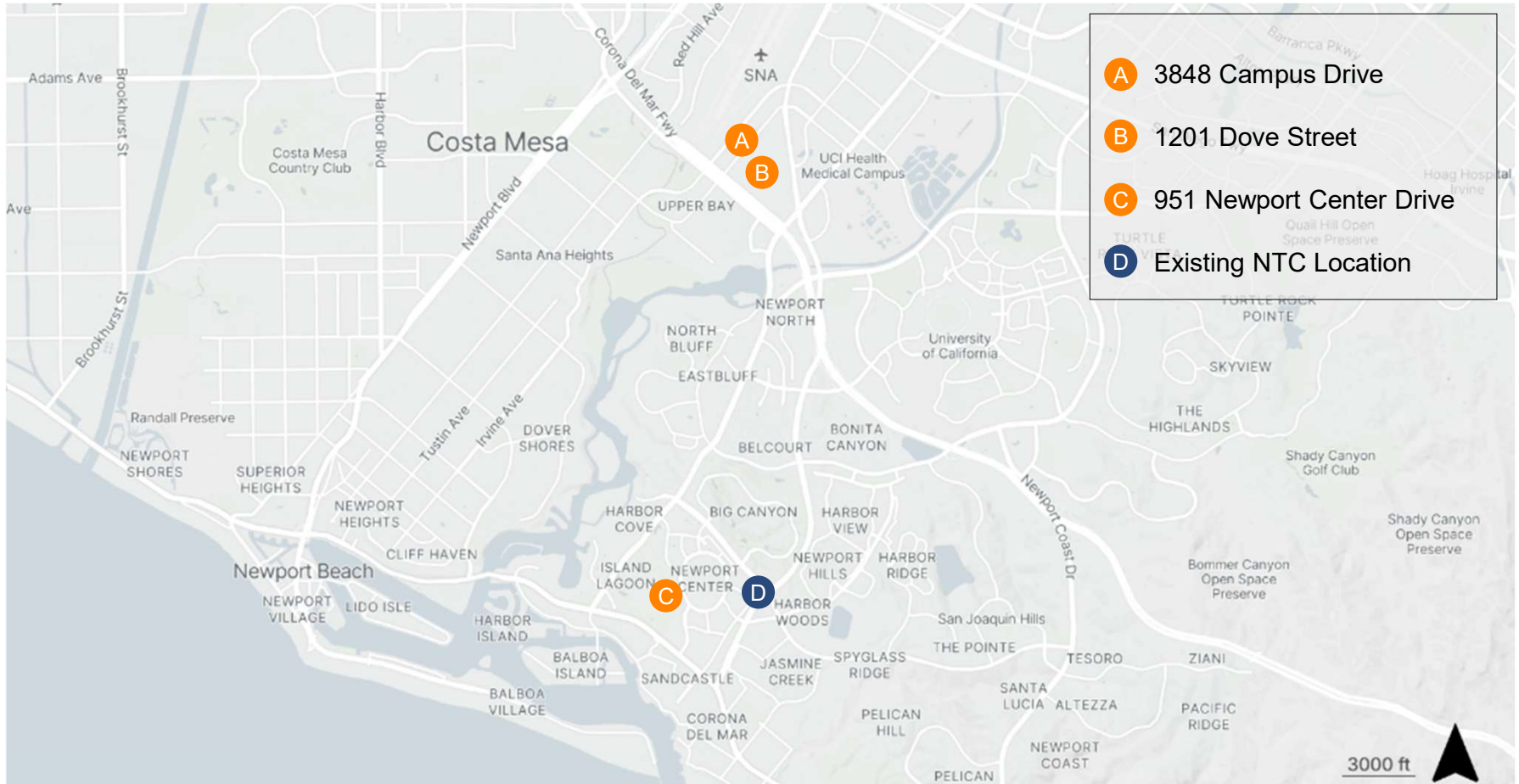


Study Goals and Objectives

- Provide Safe and Efficient Transit Operations
- Maintain or Improve on NTC Ridership and Coach Operator Services
- Align with Community Planning, Economic Development, and Local Land Use
- Minimize Environmental Impacts and Support Regulatory Compliance
- Identify Real Estate Feasibility and Legal Compliance
- Assess Infrastructure Capacity and Resilience
- Assess Financial Feasibility



Review of City Proposed Relocation Sites



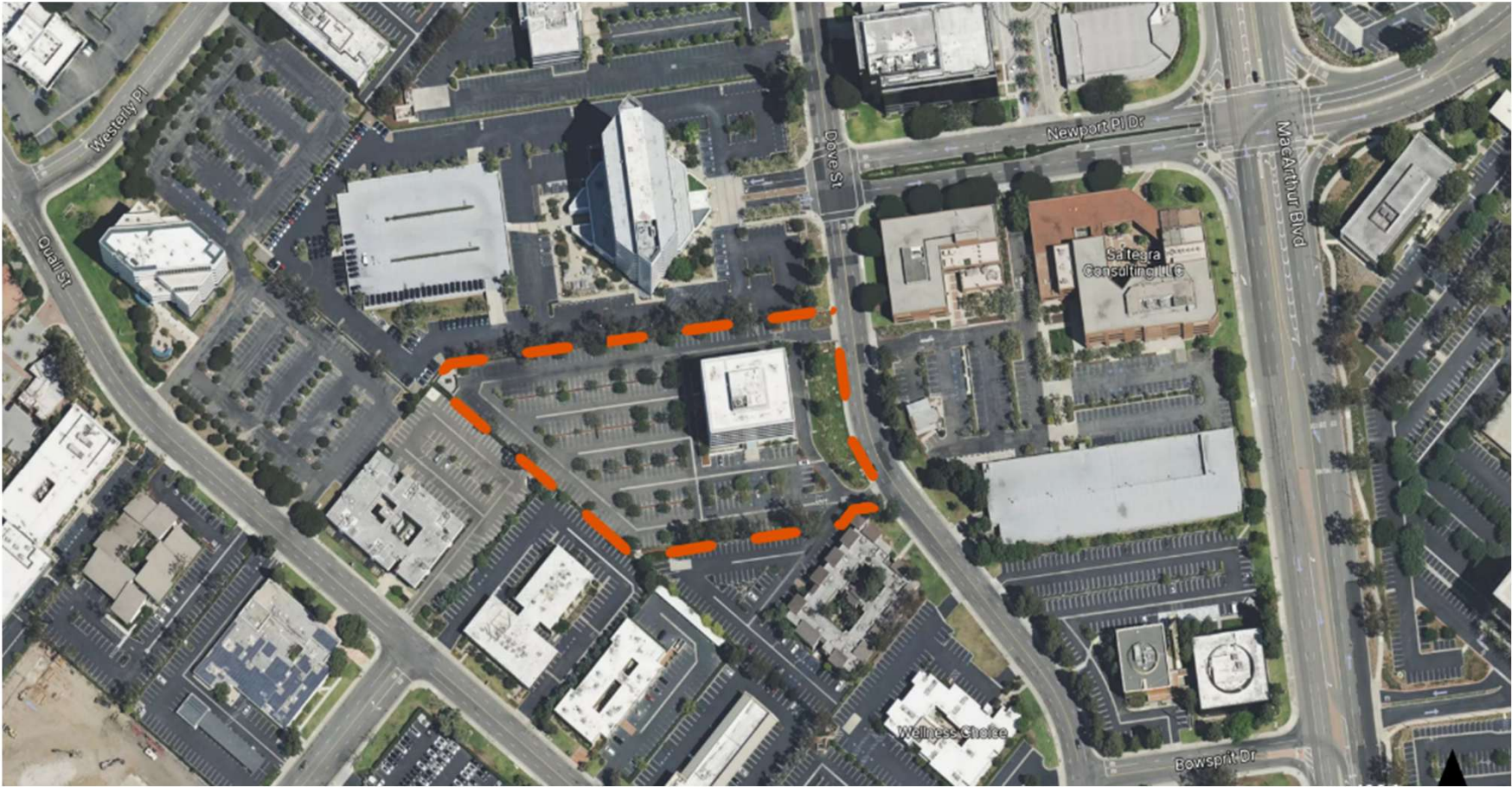


Existing Newport Transportation Center



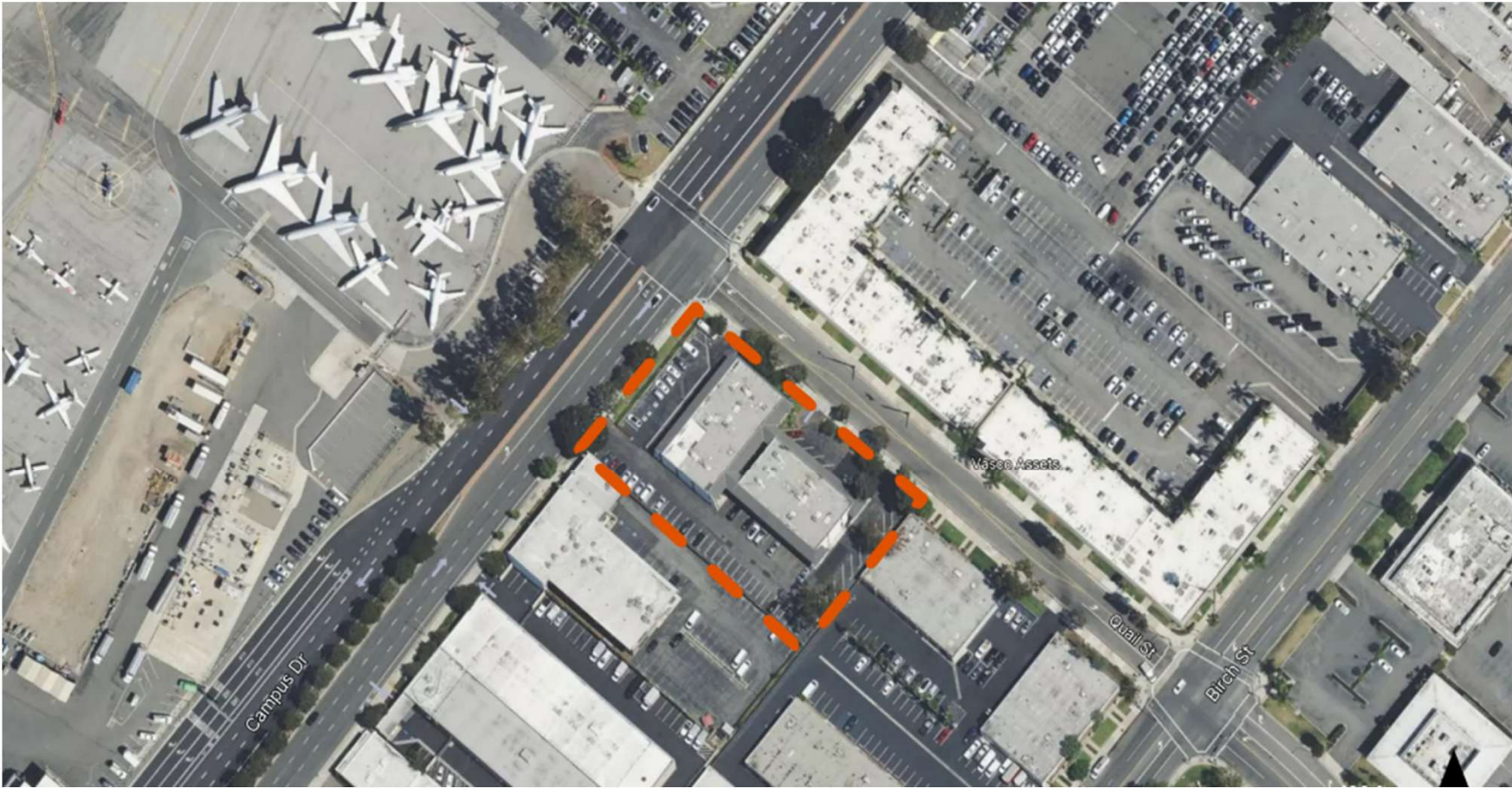


1201 Dove Street



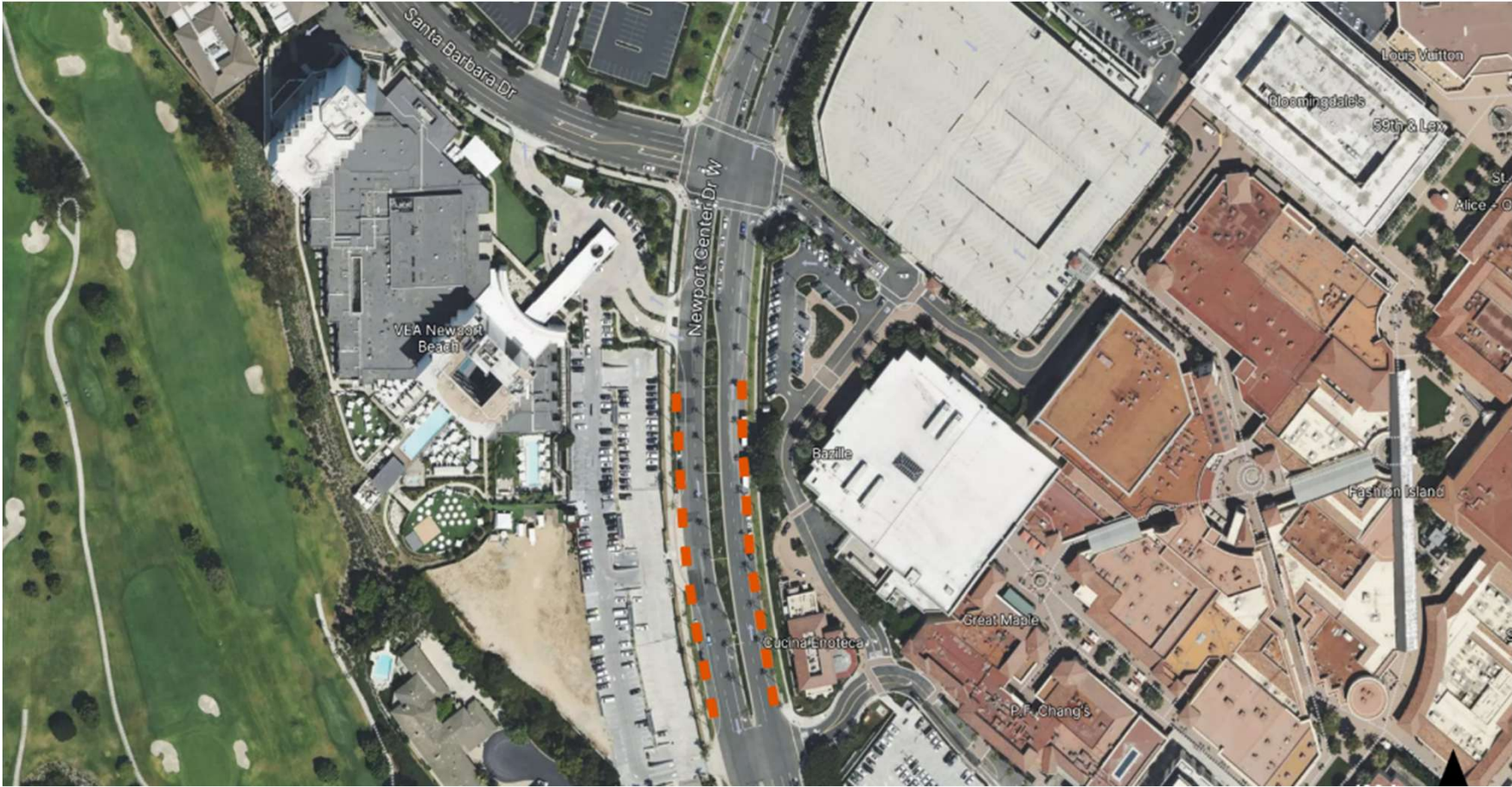


3848 Campus Drive





951 Newport Center Drive





Evaluation Criteria Framework

- Transit Center Functionality
- Operational Continuity, Network Performance, and Ridership
- Access, Community Connectivity, and Equity
- Land Use and Strategic Compatibility
- Fiscal Responsibility and Implementation Feasibility
- Legal and Regulatory Constraints



Evaluation Criteria Framework (continued)



ADA – Americans with Disabilities Act

Transit Center Functionality

- Can the site support safe, efficient, and scalable transit operations?
- Evaluates bus circulation, layover capacity, passenger flow and amenities, ADA access, and ability to maintain or improve operational performance

Ridership, Network Performance, and Operational Continuity

- Will the location maintain or enhance access for existing and future riders?
- Assesses travel times, transfer efficiency, regional connectivity, and access to key employment and activity centers



Evaluation Criteria Framework (continued)

Access, Equity, and Community Connectivity

- Does the site provide equitable and convenient access to transit?
- Reviews pedestrian and bicycle access, first/last mile connections, Title VI considerations, and impacts to transit-dependent populations

Land Use and Strategic Compatibility

- Is the site compatible with surrounding uses and long-term planning goals?
- Evaluates consistency with the City's General Plan, growth areas, housing strategy, and OCTA's regional mobility objectives





Evaluation Criteria Framework (continued)



Fiscal Responsibility and Implementation Feasibility

- Is the project economically viable and deliverable?
- Compares capital and operating costs, funding responsibilities, lifecycle considerations, phasing, and constructability

Legal and Regulatory Compliance

- Can the site meet applicable federal, state, and local requirements?
- Assesses FTA property requirements, deed restrictions, environmental clearance pathways, and other statutory constraints



Screening and Evaluation

Threshold Screening		Comparative Evaluation
Does the site meet minimum requirements?		How does each viable site perform across the criteria?
<ul style="list-style-type: none">• Ability to support core transit operations• No critical implementation barriers		<ul style="list-style-type: none">• Quantitative data (ridership impacts, travel times, cost estimates)• Qualitative analysis (land-use compatibility, implementation risk)• Consistent assumptions across all alternatives
Sites that do not meet minimum thresholds will not advance		Results will be summarized in a comparative matrix
No critical flaws identified within the proposed sites at this stage		



Study Timeline

	2/26	3/26	4/26	5/26	6/26	7/26	8/26	9/26	10/26	11/26	12/26
1: Project Management			★		★					★	
1A: Project Management											
1B: Public Outreach and Engagement											
2. Baseline Conditions and Needs Assessment											
3. Evaluation Criteria Development											
4: Site Relocation Assessment											
4A: Alternative NTC Site Identification											
4B. Fire Station #3 Relocation Summarization											
4C. NTC Relocation Assessment											
5: Environmental, Sustainability, and Technical Analysis											



Interim Study Update



OCTA Transit Committee and Board Update



Next Steps

- April 20, 2026, Project Development Team Meeting Scheduled
- Complete the Baseline Conditions and Needs Assessment
- Development of Conceptual Site Plans
- Site Relocation Assessment Process