

# Regional Planning Update

# Overview

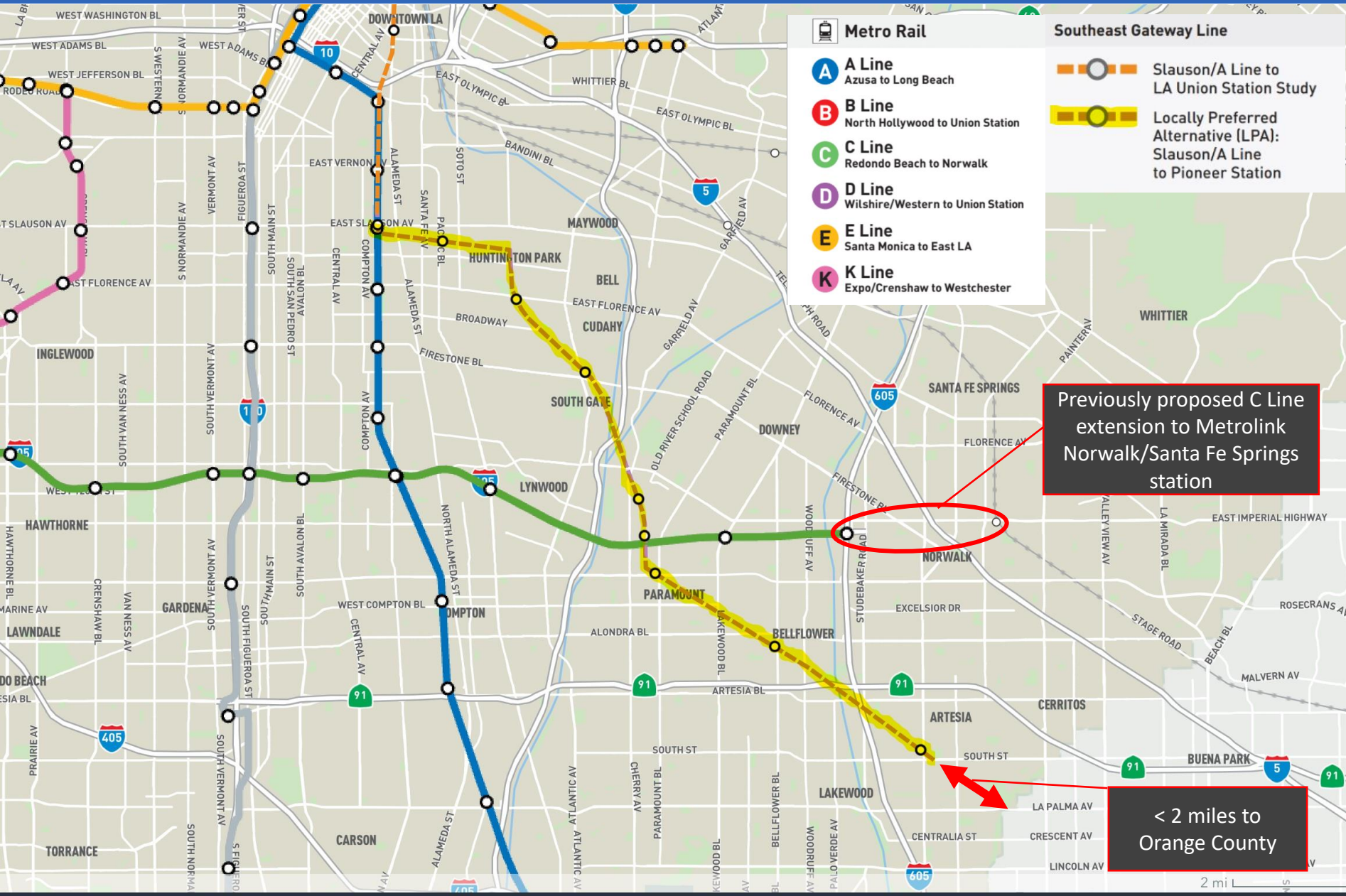
- This update focuses on:

Metro Southeast Gateway Line Project

Potential Federal Highway Funding Sanctions

2024-2050 Regional Transportation Plan/Sustainable Communities Strategy

# Southeast Gateway Line Project



**Summer 2024**  
Environmental phase complete

**Fall 2024**  
Slauson/A Line to Union Station Study complete

**2025-2026**  
Begin construction

**2034-2036**  
Begin service

# Potential Federal Highway Funding Sanctions

1997:

- **Federal Ozone standard established**
  - South Coast Air Basin required to meet by 2023

2019:

- **Contingency Measure Plan submitted**
  - Defines 'black box' emission reduction measures in the 2016 Air Quality Management Plan
  - Nearly 2/3 of needed reductions are under federal authority

July  
2021:

- **Federal action deadline to approve or disapprove**
  - No action taken

April  
2023:

- **South Coast Air Quality Management District files lawsuit**
  - Intended to compel a commitment to emission reductions from federally regulated sources
  - Includes environmental advocate organizations

February  
2024:

- **Proposed action to disapprove filed in Federal Register**
  - Site "no basis" to accept responsibility for emissions from federal sources

July 31,  
2024:

- **Final federal action anticipated**
  - 24-month federal highway funding sanction clock begins if disapproved

*If Sanction come in play...*

## Funding Restrictions

- Prohibit approval of projects or the awarding of grants.

## Project Delays

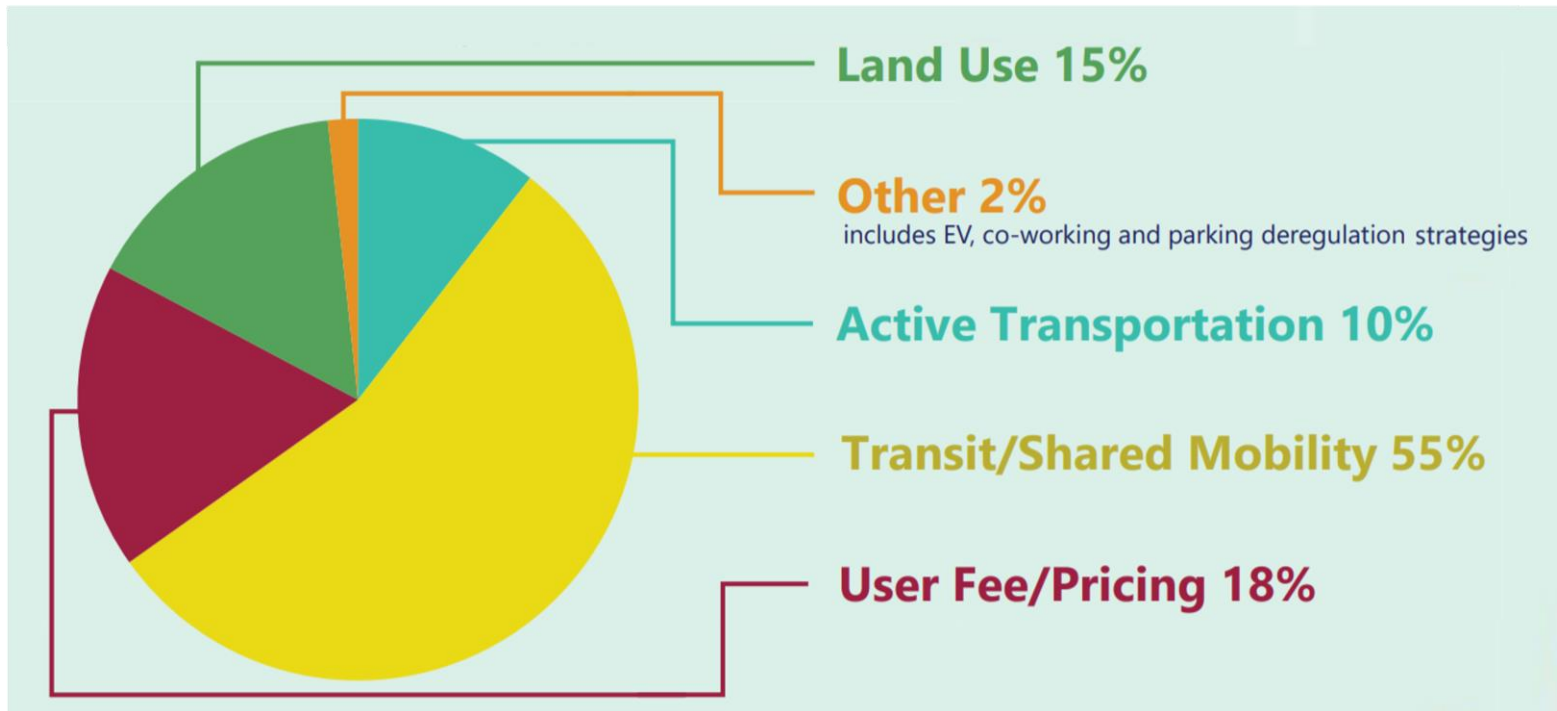
- Delayed or halted projects can affect economic development and transportation efficiency.

## Deferred Maintenance

- While projects related to transit and safety are exempt, the overall reduction in funding can impact the maintenance and operation of the transportation system.

# 2024-2050 RTP/SCS

## Achieving the Regional Greenhouse Gas Reduction Target for 2035 (19 percent per capita from 2005 levels)

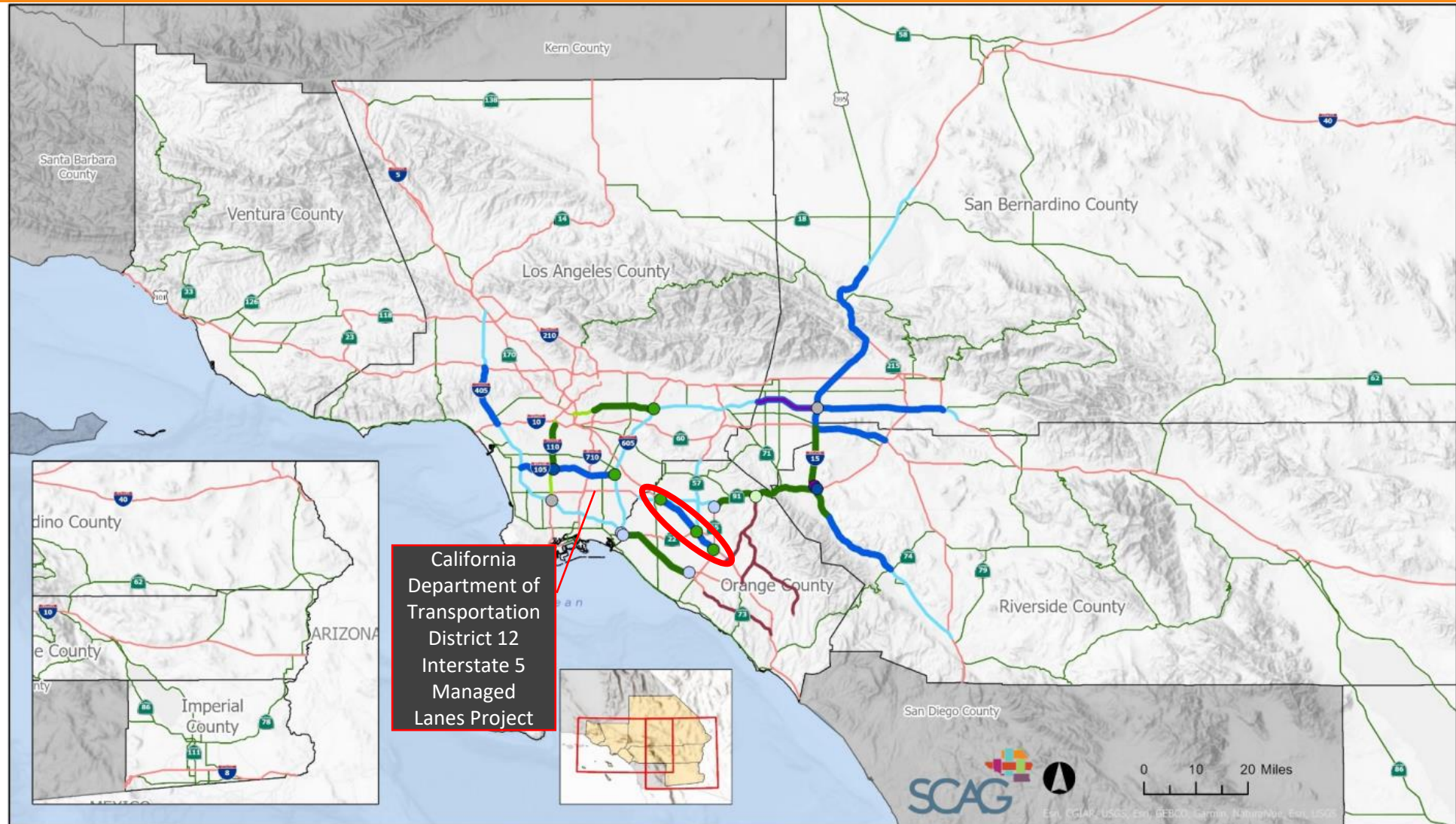


## Dependent on assumed “Regional Strategic Investments”

- Beyond County Transportation Commission (CTC) project submittals
  - CTCs not responsible for implementing
- Includes pricing assumptions:
  - Priced parking
  - Congestion pricing (Los Angeles only)
  - Mileage-based user fees
  - Tolled express lanes



# RTP/SCS Express Lanes Network



# Next Steps

## Continue monitoring and engaging in:

Partner agency projects that may influence Orange County travel

Strategies to avoid federal highway funding sanctions

State and federal approval processes for the 2024-2050 RTP/SCS

Coordination on tolled express lane planning & implementation