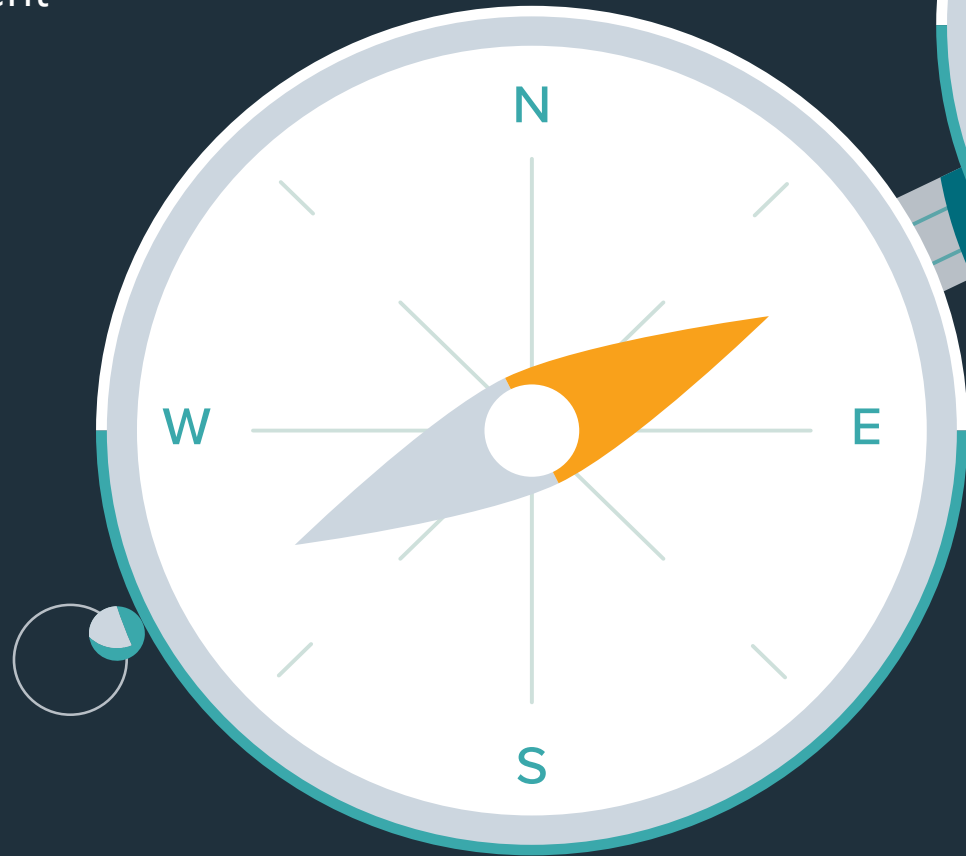


Connect SoCal 2024

Draft Plan for Review
and Comment



The Southern California Association
of Governments' 2024–2050
Regional Transportation Plan/
Sustainable Communities Strategy

The SCAG Region



6
COUNTIES

16
TRIBAL
GOVERNMENTS

191
CITIES

18.7M
RESIDENTS



38,618
SQUARE MILES

\$1.6T
REGIONAL GDP

16TH
LARGEST
ECONOMY
WORLDWIDE

47.6%
OF STATE
POPULATION

Our Role in the Region



Vision and Goals

SCAG leads the region by defining where we want to go and outlining strategies to get us there.

Leadership

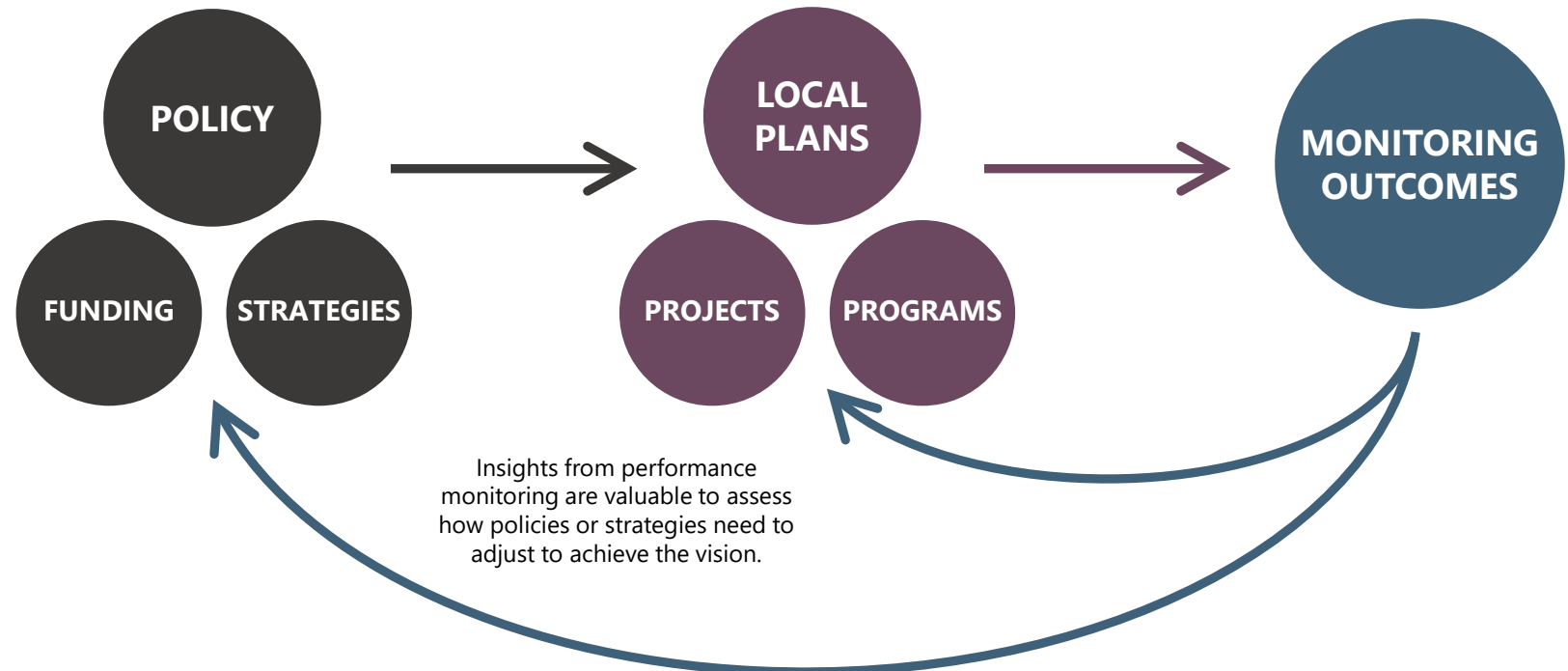
SCAG works with local jurisdictions, transportation commissions, state and federal agencies and various stakeholder groups to identify how we will work together to achieve the regional vision.

Implementation

Jurisdictions take action at the local level to implement work that moves toward achieving this regional vision.

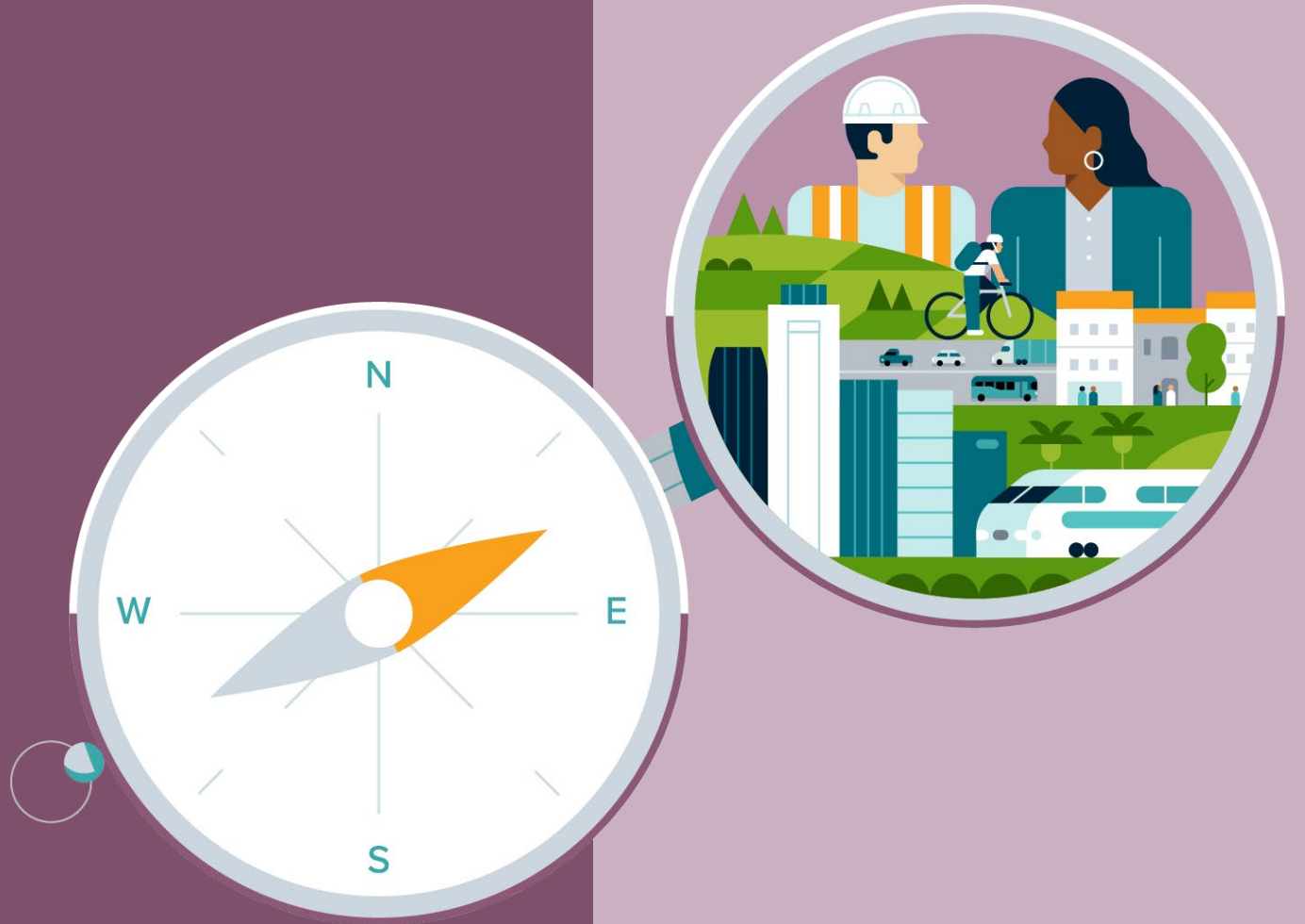
Evaluation

Measurement of implementation work and outcomes acts as a benchmark on progress toward achieving the vision.

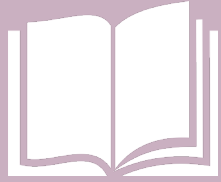




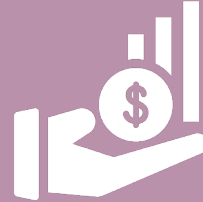
WHAT IS Connect SoCal?



Connect SoCal is:



**A Regional
Transportation
Plan/Sustainable
Communities Strategy
(RTP/SCS)**



**A plan to meet federal
and state requirements,
which is critical for
projects in the region to
receive transportation
funding or approval**



**A 20+ year plan with
\$750 billion in
transportation
investments, a
regional development
pattern and many
supportive programs
and strategies**

Plan Elements

Regional Planning Policies

Provide guidance for integrating land use and transportation

Project List

Details plan investments

Forecasted Regional Development Pattern

Demonstrates where the region can sustainably accommodate jobs and needed housing

Regional Strategic Investments

Address the gap between local plans and regional performance targets and goals

Implementation Strategies

Guide where SCAG will lead, partner or support plan implementation





HOW DO WE DEVELOP THE PLAN?



A “Continuing, Cooperative and Comprehensive” Approach

2021

FOUNDATIONS AND
FRAMEWORKS

2022

DATA COLLECTION
AND POLICY
DEVELOPMENT

2023

OUTREACH AND
ANALYSIS

2024

DRAFT PLAN AND
ADOPTION



Plan development included many steps including:

- 90+ Working Group and Technical Advisory Committee meetings
- 3,600+ public outreach survey responses
- Input solicited from County Transportation Commissions for Plan **Project List**
- Input solicited from local jurisdictions for **Forecasted Regional Development Pattern**
- 100+ Staff Reports to SCAG’s Policy Committees and Regional Council



WHO ARE WE PLANNING FOR?



Equity and Resilience as a Lens



MOBILITY

- System Preservation and Resilience
- Complete Streets
- Transit and Multimodal Integration
- Transportation Demand Management
- Transportation System Management
- Technology Integration*
- Safety
- Funding the System/User Fees

COMMUNITIES

- Priority Development Areas
- Housing the Region*
- 15 Minute Communities*
- Equitable Engagement and Decision-Making*

ENVIRONMENT

- Sustainable Development
- Air Quality
- Clean Transportation
- Natural & Agricultural Lands Preservation
- Climate Resilience*

ECONOMY

- Goods Movement
- Broadband*
- Universal Basic Mobility*
- Workforce Development*
- Tourism

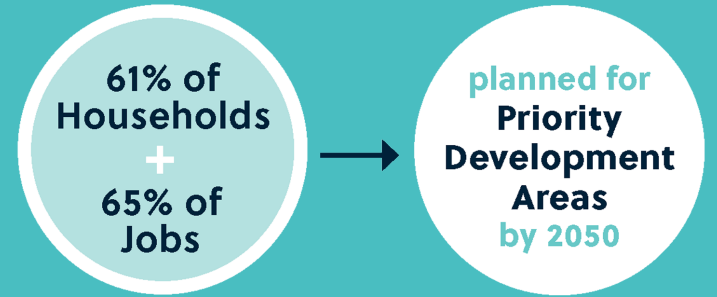
**New policy area for Connect SoCal 2024*

The Region in 2050

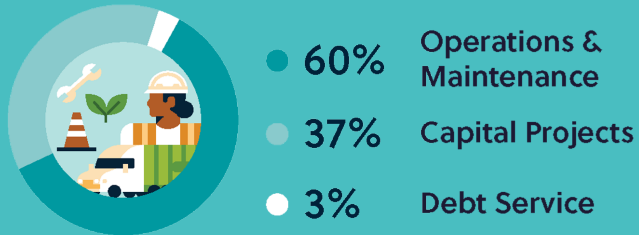
Demographic Forecast



More Efficient Development Pattern



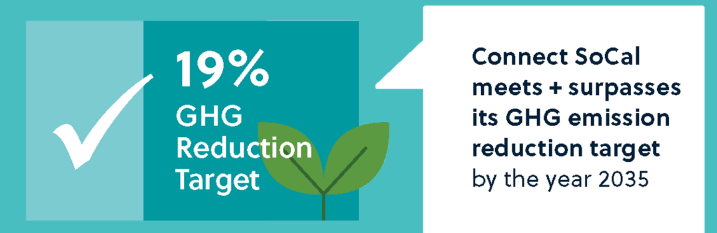
\$750.1 Billion in Investments through 2050



Less Congestion



Reduced GHG Emissions from Passenger Vehicles



More Travel Options



Direct Economic Impacts

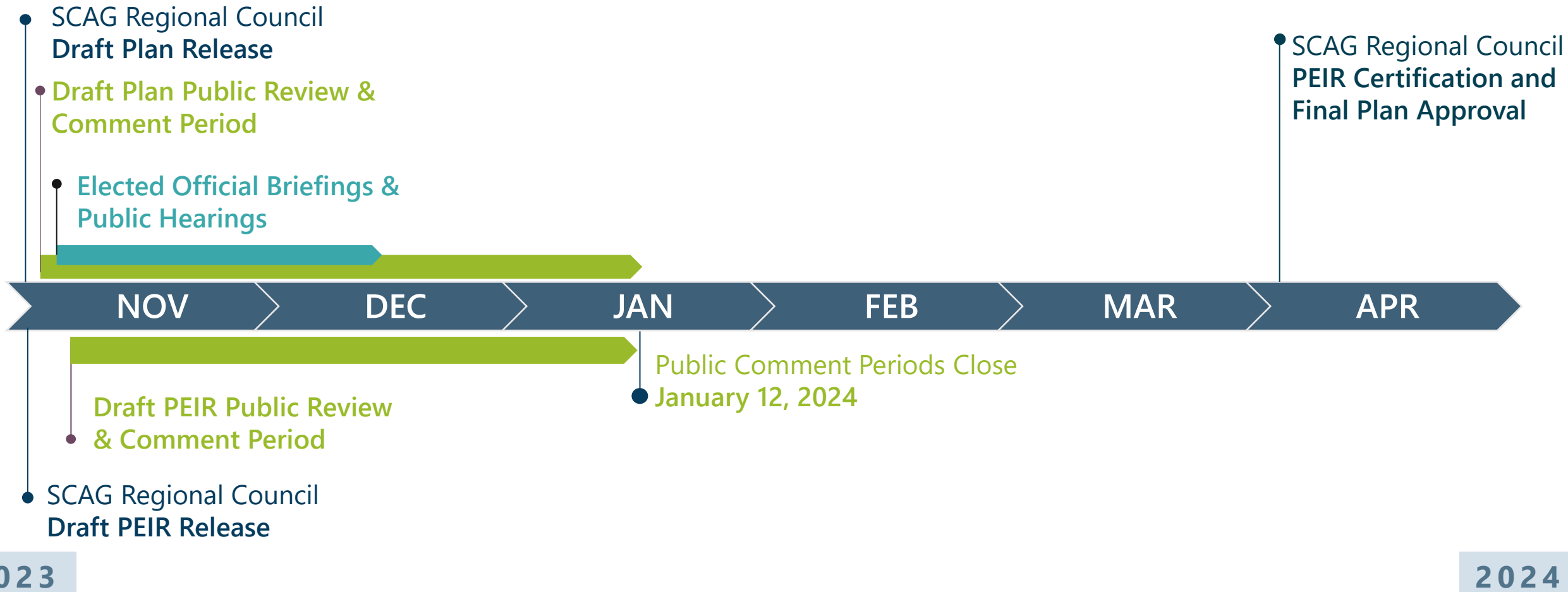
\$2.00 in benefits for each \$1.00 invested and 480,100 annual new jobs from transportation investments and increased competitiveness.





WHAT COMES NEXT?

Draft and Final Plan Timeline



2023

2024

Give Your Comments



Visit

ConnectSoCal.org to read
the draft Connect SoCal
2024



Submit

Comments online or by
mail by January 12, 2024



Contact

Legislative Affairs
Manager:

Kevin Gilhooley
gilhooley@scag.ca.gov
(213) 236-1878

THANK YOU!

For more information, please visit:

www.scag.ca.gov



The Southern California Association
of Governments' 2024–2050
Regional Transportation Plan/
Sustainable Communities Strategy