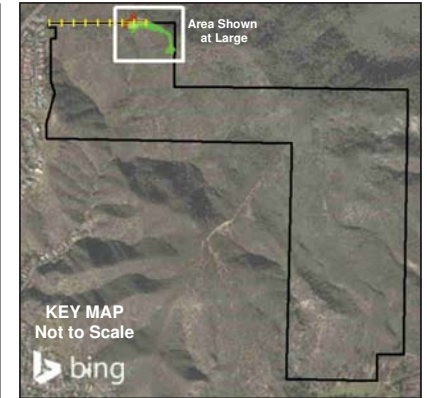
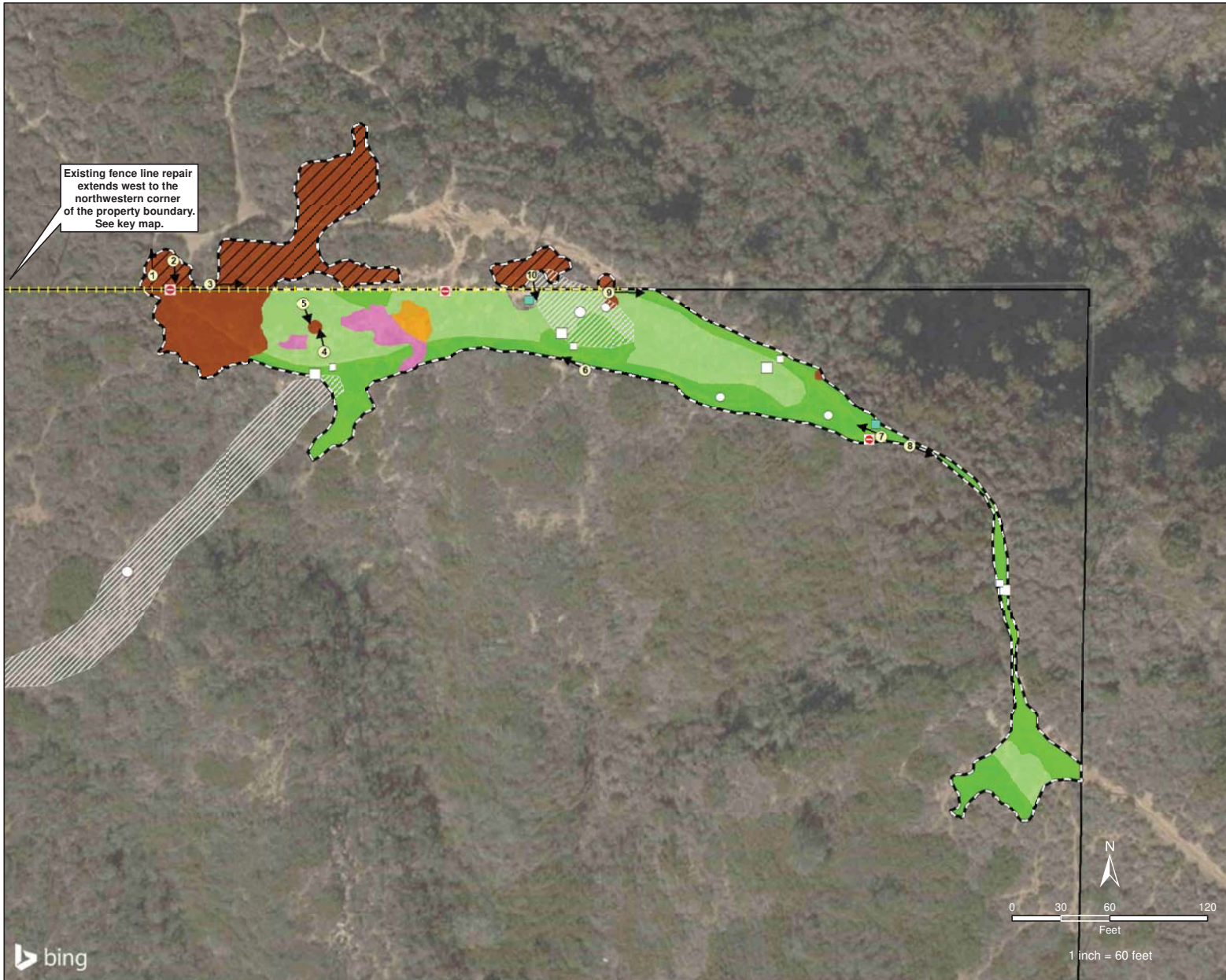


Pacific Horizon Preserve OCTA Restoration Efforts Map



- Pacific Horizon Preserve
 - Disturbed Lands Restoration Work Area
 - Existing Fence Repair
 - Iceplant Removal Areas (County Property) - 0.13 ac.
 - Iceplant Removal Areas - 0.07 ac.
 - Fountain Grass Removal Areas - 0.02 ac.
 - Pampas Grass Removal Areas - 0.01 ac.
 - Passive Restoration - 0.22 ac.
 - Active Restoration - 0.23 ac.
 - Proposed "Do Not Enter/Restoration in Progress" Sign
 - Proposed Approximate Location of Permanent Camera Station
 - Photo Location
- Covered Species**
- Intermediate Mariposa Lily
 - Intermediate Mariposa Lily
 - Many-stemmed Dudleya

PACIFIC HORIZON PRESERVE
Disturbed Lands Restoration Map

GLENN LUKOS ASSOCIATES

Exhibit 3

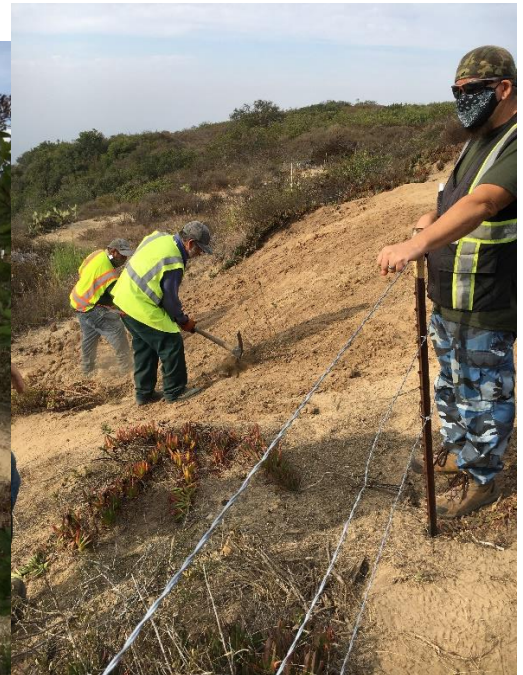
ATTACHMENT C

X:\1100 AFTER THE REST\1184-2\MON\1184-2_GIS\PacificHorizonGIS\CCC_GIS\1184-2 PacificHorizonCCCProposedRestoration.mxd

OCTA Pacific Horizon Preserve Restoration Work Photos



Dudleya crushed by mountain biking activity (above). Dirt berm built by mountain bikers (right).



Breaking up large bike jump area. Workers pulled out over a dozen bags of dirt that formed the jump. Ground was left loose, broken up and dead brush was placed in the area. Site was monitored by Native American and archaeological contractors due to the proximity to sensitive resources. No cultural resources were detected.

OCTA Pacific Horizon Preserve Restoration Work Photos



(Left) Old rusty barbed wire fence line. (Right) New smooth wire fence line (wildlife friendly). Contractor was able to utilize some of the same posts. Fence is in the same location.



New signage and wildlife camera posts installed. Photo on right (photo from 2015) shows the Many-stemmed dudleya on site that we are trying to protect.

OCTA Pacific Horizon Preserve Restoration Work Photos



This picture depicts the main access point onto the decommissioned trail. Fence line has been fixed and signage placed.



Photo of same entry point looking at the back of the sign. Trail has been obscured with dead vegetation.