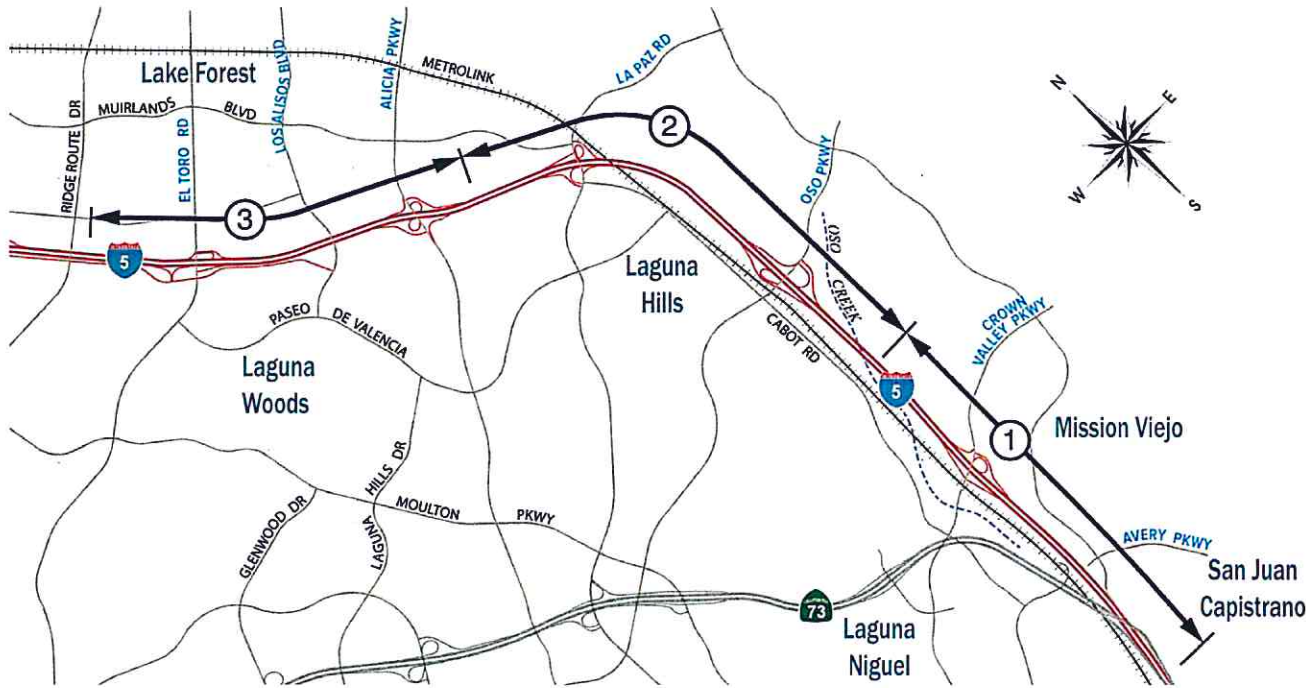




Update on Interstate 5 Widening Project Between State Route 73 and El Toro Road



Project Area



Project Segments from South to North

Segment 1

State Route 73 to south of
Oso Parkway

Segment 2

South of Oso Parkway to
south of Alicia Parkway

Segment 3

South of Alicia Parkway to
north of El Toro Road

Total length: 6.5 miles



Project Improvements



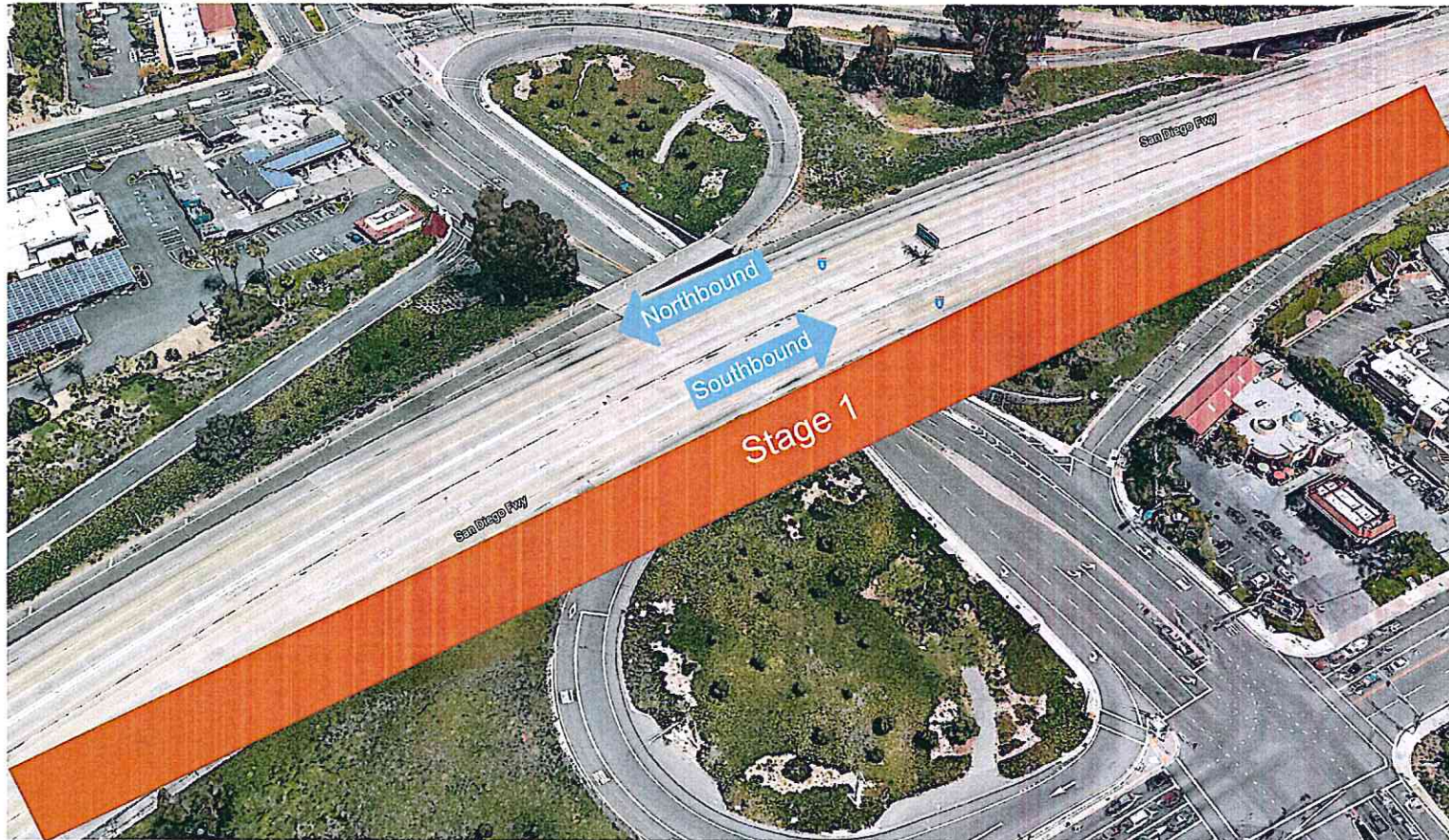
- 1** Add one general purpose lane in both directions from Avery Parkway to Alicia Parkway
- 2** Extend second high-occupancy vehicle lane in both directions from Alicia Parkway to El Toro Road
- 3** Reconstruct Avery Parkway and La Paz Road interchanges, and Los Alisos Boulevard overcrossing
- 4** Reconstruct and add auxiliary lanes
- 5** Realign and/or improve on- and off-ramps



La Paz Road Interchange Reconstruction



La Paz Road Interchange Reconstruction



La Paz Road Interchange Reconstruction



La Paz Road Interchange Reconstruction



La Paz Road – Interchange Improvements



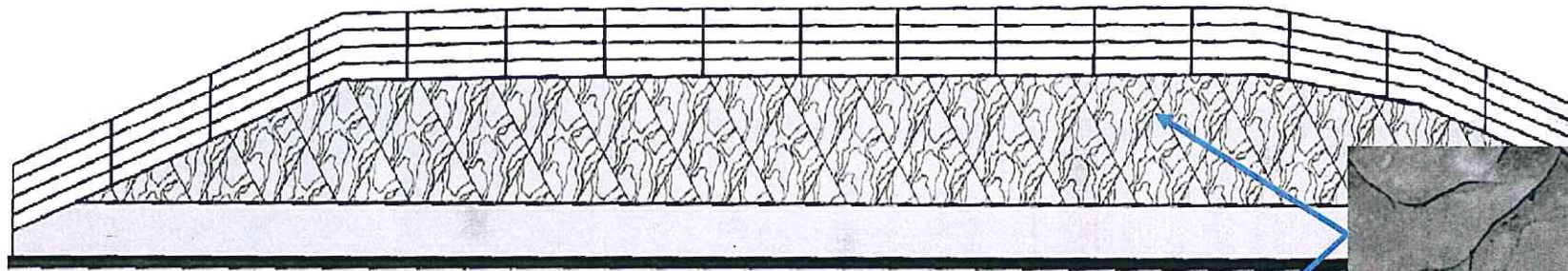
- Increase vertical clearance to 15 feet
- Total number of thru lanes
 - Three eastbound (EB) thru lanes
 - Three westbound (WB) thru lanes
- New five-foot bike lanes and widen existing sidewalks

Avery Parkway – Interchange Improvements



- Replace Interstate 5 bridge
- Ten lanes on Avery Parkway
- Three WB and three EB thru lanes
- Two WB and two EB left-turn lanes
- Eight-foot bike lanes in each direction
- Standard shoulders
- Sidewalks in each direction

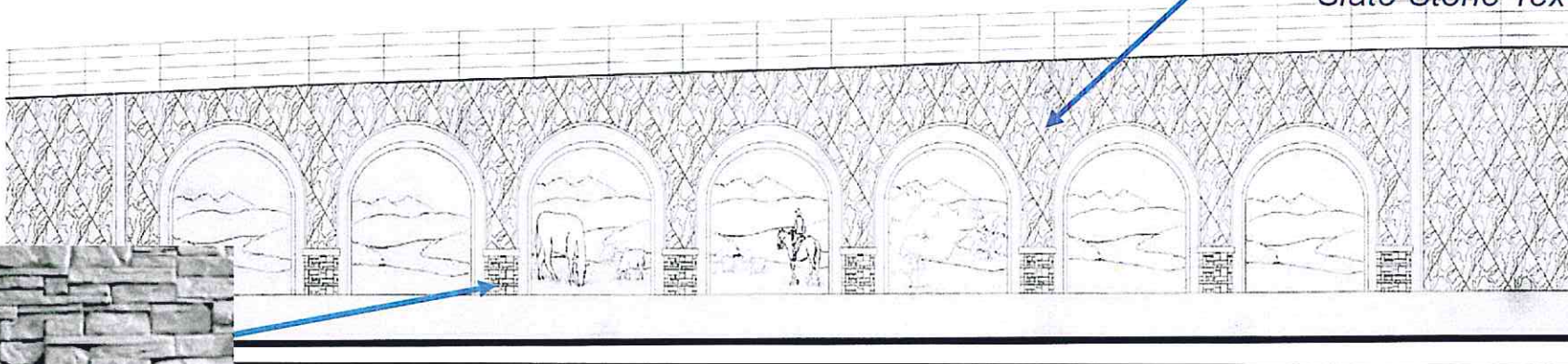
Retaining Wall Aesthetics



Minor Retaining Walls



Slate Stone Texture



Major Retaining Walls

Pastoral Ranch Theme



Stacked Stone Texture

- Safety of commuters, pedestrians, and construction crews are the highest priority
- Detours safe, short, and fully coordinated with city staff
- Mainline closures will be off-peak and overnight
- On- and off-ramp closures will be short term

Current Activities



- Final design 100 percent complete for Segment 1 and nearing completion for Segment 3
- California Department of Transportation lead agency for right-of-way
 - Segment 2 - acquisitions complete
 - Segment 1 - acquisitions almost complete
 - Segment 3 – acquisition process underway
 - Total of 64 properties needed for all three segments with 61 percent of acquisitions complete
- Coordination of utility relocations is on-going
- Coordination with Metrolink to maximize safety and minimize interruption to passenger services, as needed



Estimated Construction Schedule



Segment	Estimated Schedule
Segment 2 Oso Parkway to Alicia Parkway	Late May 2019 – Late 2023
Segment 1 State Route 73 to Oso Parkway	Early 2020 – Early 2025
Segment 3 Alicia Parkway to El Toro Road	Mid 2020 – Mid 2024



Public Communications and Outreach



I-5 (SR-73 to El Tero Road)

PROJECT CONTACTS #1 & 2
FERNANDO CHAVARRIA
 714.960.5578
 fernando@ocgo.net

OCGO
 Orange County Grand Opening

IMPROVEMENTS ARE DOWN THE ROAD
 SR-73 TO EL TORO ROAD

SOUTH COUNTY I-5 IMPROVEMENT PROJECT SR-73 TO EL TORO ROAD

PROJECT OVERVIEW
 Under the direction of OCTA and Orange County, the San Diego Freeway (I-5) widening project will be constructed by OCTA, OCTA's 100% South County member, to increase capacity and safety of transportation corridor. It will include two new lanes in each direction, a median, a shoulder, and a shoulder on the northbound side. The project will also include a shoulder on the southbound side. The project will be constructed in two phases. Phase 1 will be the widening of the freeway from SR-73 to El Tero Road and Phase 2 will be the widening of the freeway from El Tero Road to the next interchange.

WHEN?
 Sunday, March 9, 2019 | 8:30 a.m. - 10:30 a.m.

WHERE?
 Culverac at end of Temescal Circle

QUESTIONS?
 Please contact Logan Selsick at 714-560-5579 or laselsick@ocgo.net

ESTIMATED TIMELINE
 Early 2019 to Early 2020

OCTA.NET/SOUTHCOUNTY
 #OCSOUTHCOUNTY @SOUTHCOUNTY



IMPROVEMENTS ARE DOWN THE ROAD
 SR-73 TO EL TORO ROAD

CONSTRUCTION BEGINS MID 2019

OCTA.NET/SOUTHCOUNTY

OCGO

SIENNA SEGMENT One Parkway to Abate Parkway
 Estimated Construction Start: Mid 2019 to Late 2023

SEGMENT OVERVIEW
 How do we build and maintain general purpose roads built with Orange County money? The improvement project is designed to build construction, maintain and safety, including Union Valley High School.

ROADWAY
 • Increase capacity / improve mobility
 • Add parking for the new neighborhood and neighborhood from City of Abate Parkway

STRUCTURE
 • Reconstruct La Pita Road intersection
 • Upgrade the existing intersection of One Parkway
 • Add intermodal transportation ways

OPERATIONAL
 • Construct "bicycle" lanes to encourage safety
 • Add streetlights to encourage safety, including operations

DETAILS
 (SOUTH COUNTY) Abate Parkway, Lane 10000 & Laguna 10000
 (SOUTH COUNTY) Abate Parkway, Lane 10000 & Laguna 10000
 (SOUTH COUNTY) Abate Parkway, Lane 10000 & Laguna 10000

ANTICIPATED CONSTRUCTION SCHEDULE

2019 2020 2021 2022 2023 2024

PROJECT LEGEND
 • Interchange Rebuild
 • Segment Rebuild

OC I-5 South County
 @OCISouthCounty

OC I-5 South County
 @OCISouthCounty

OC I-5 South County updated their website address

OC I-5 South County updated their profile picture

Outreach Staff Contact



Fernando Chavarria
OCTA
(714) 560-5306
fchavarria@octa.net



Logan Selleck
OCTA
(714) 560-5573
lselleck@octa.net

