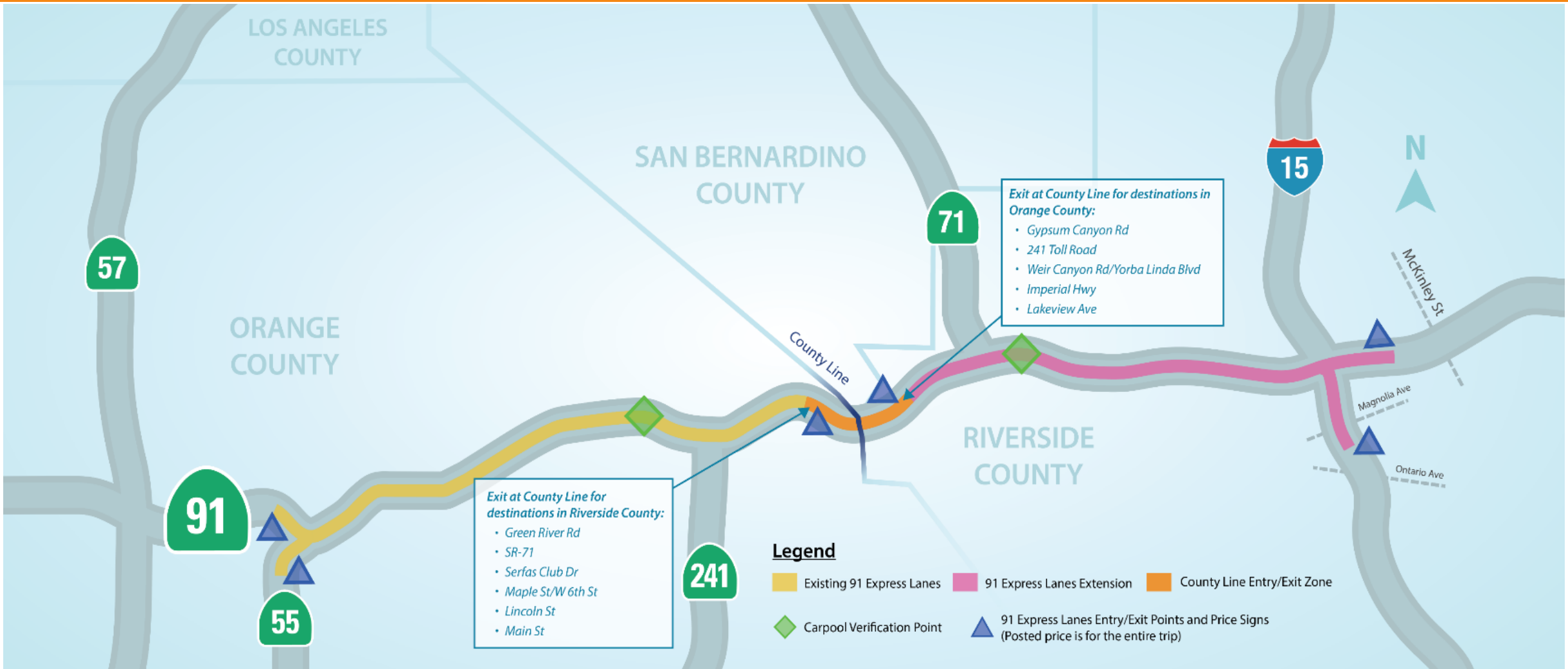




# **91 Express Lanes Update for the Period Ending June 30, 2022**

# State Route 91 Corridor

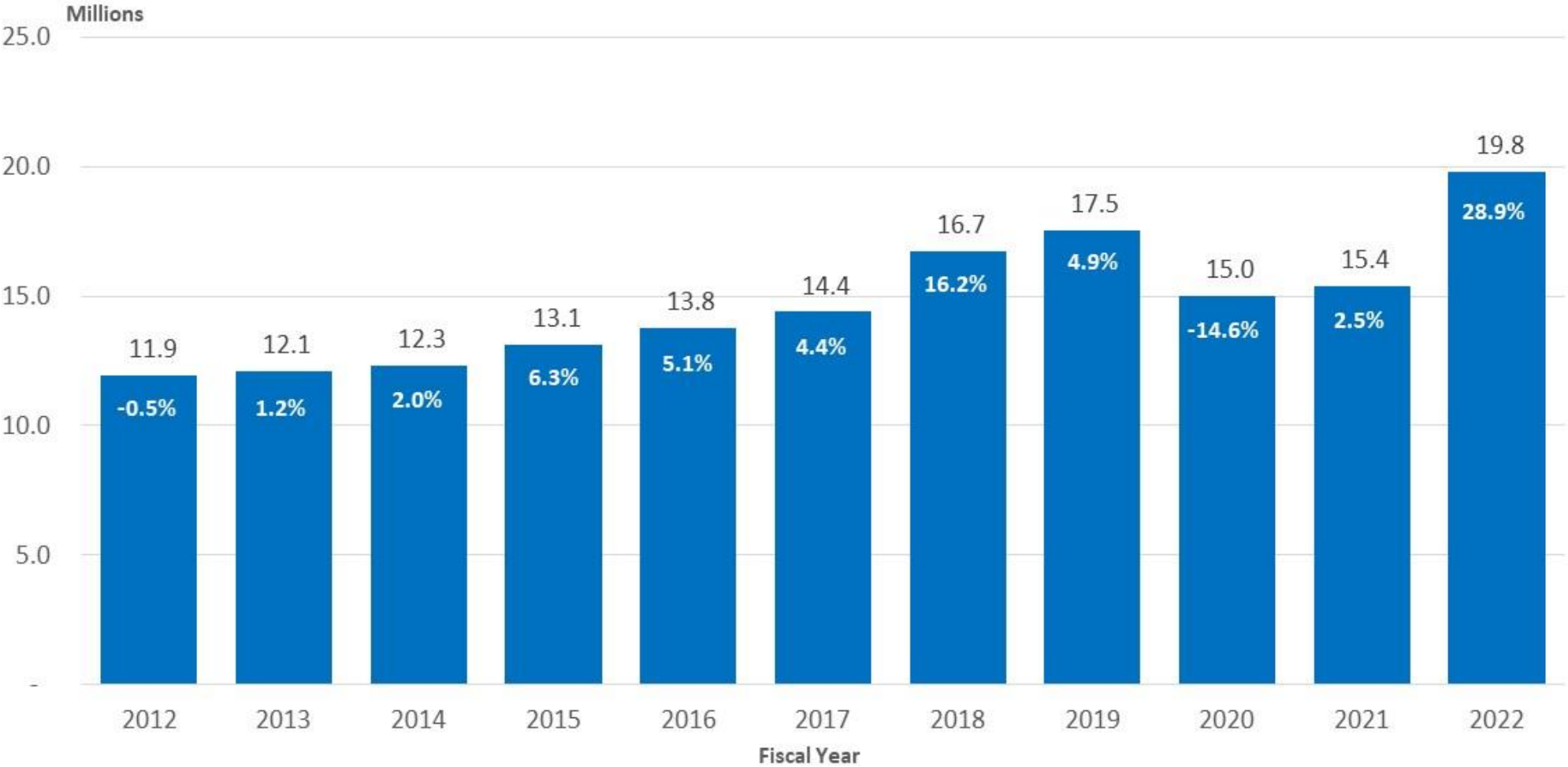


# Year in Review

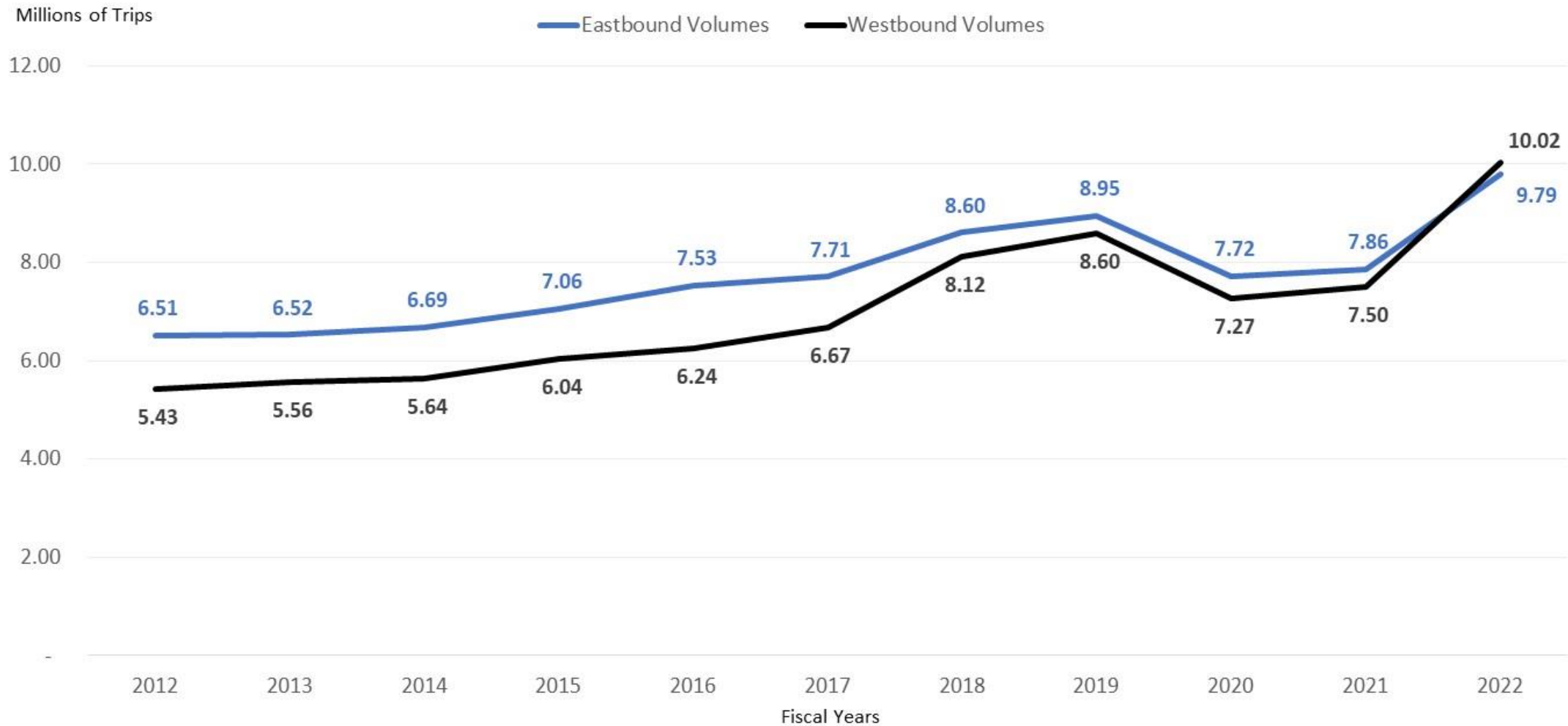
- Traffic volumes and toll revenues have reached historic highs
- Back-office system implemented and transitioned to new operating contract
- New 91 Express Lanes website launched
- Utilizing Freeway Services Patrols for roadway services on the 91 Express Lanes
- Partnered with RCTC in funding a portion of the recently completed new westbound SR-91 lane (91 Corridor Operations Project)
- Received an updated traffic and revenue study

*RCTC – Riverside County Transportation Commission*  
*SR-91 – State Route 91*

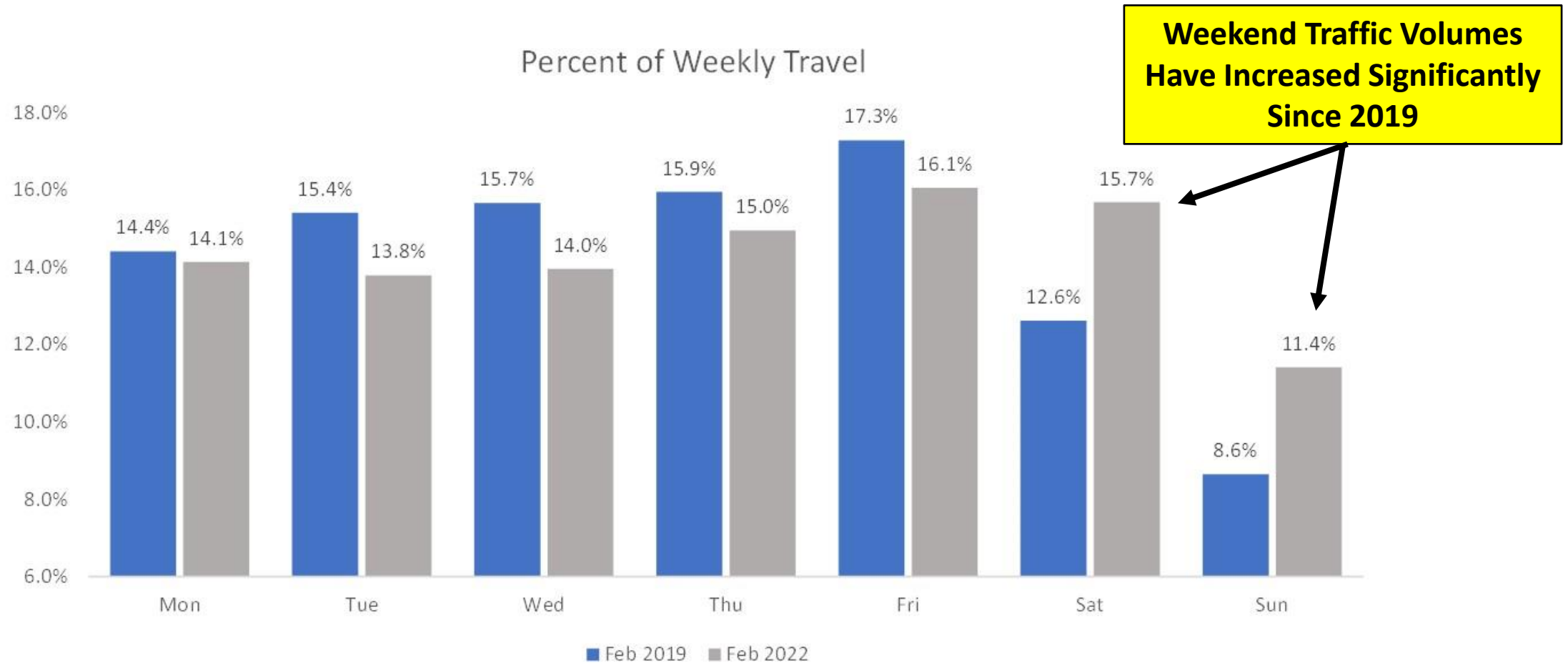
# Annual Traffic Volumes Reach Highest Levels



# Westbound Surpasses Eastbound Travel

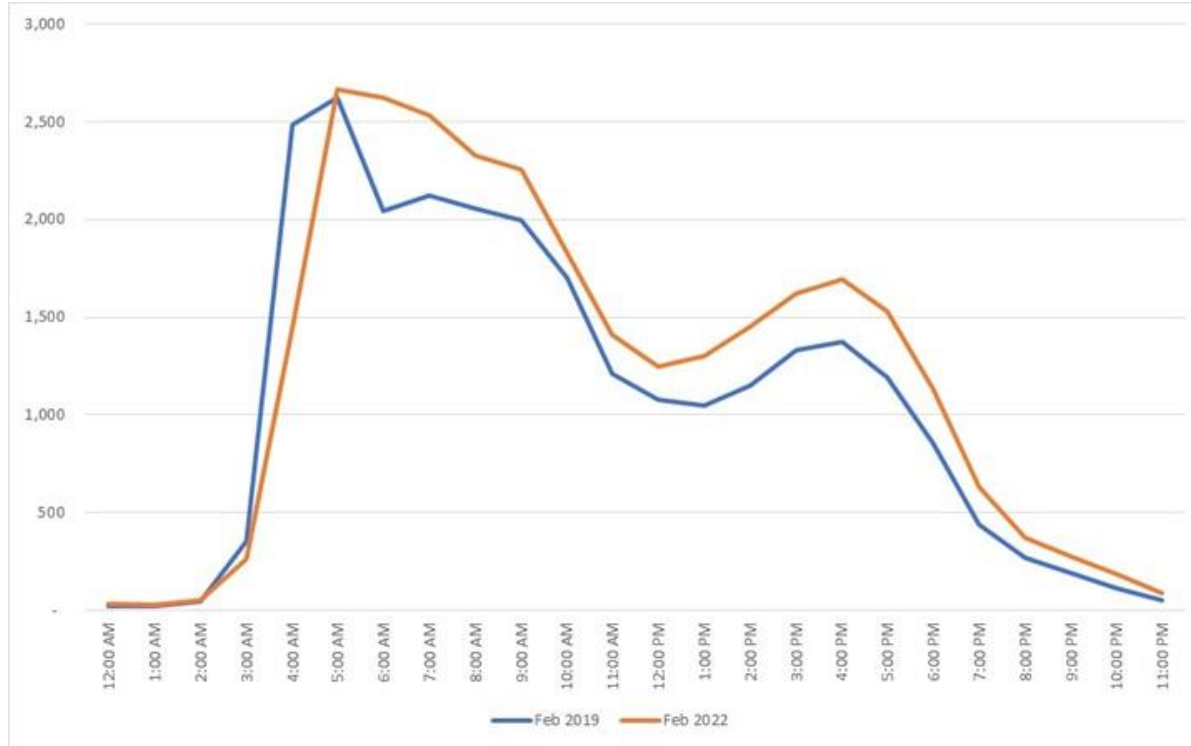


# Increases in Weekend Travel



# Peak Periods Have Spread During Weekdays

Westbound – Average Weekday

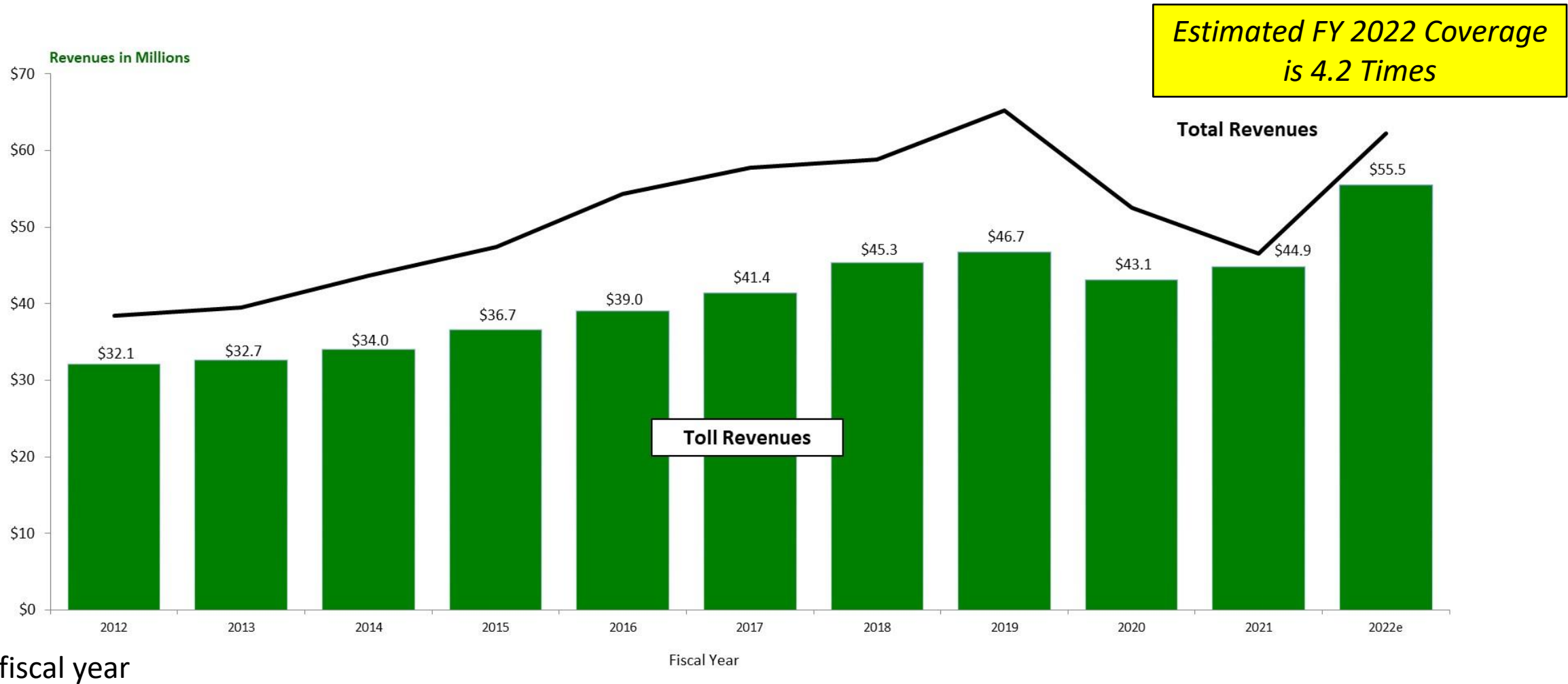


Eastbound – Average Weekday



**Peak Period Travel Has Expanded Since 2019**

# Revenues by Year





# Looking Ahead

- Observe traffic levels and adjust toll rates accordingly
- Complete installation of new entrance readers and replace digital cameras along the SR-91 corridor
- Monitor legislative bills in Sacramento impacting tolling operations
- Continue working with partner agencies on the design and operations of the 241/91 Express Lanes Connector
- Evaluate debt refinancing opportunities in 2023