



Rethinking Transportation: A Bold New Approach

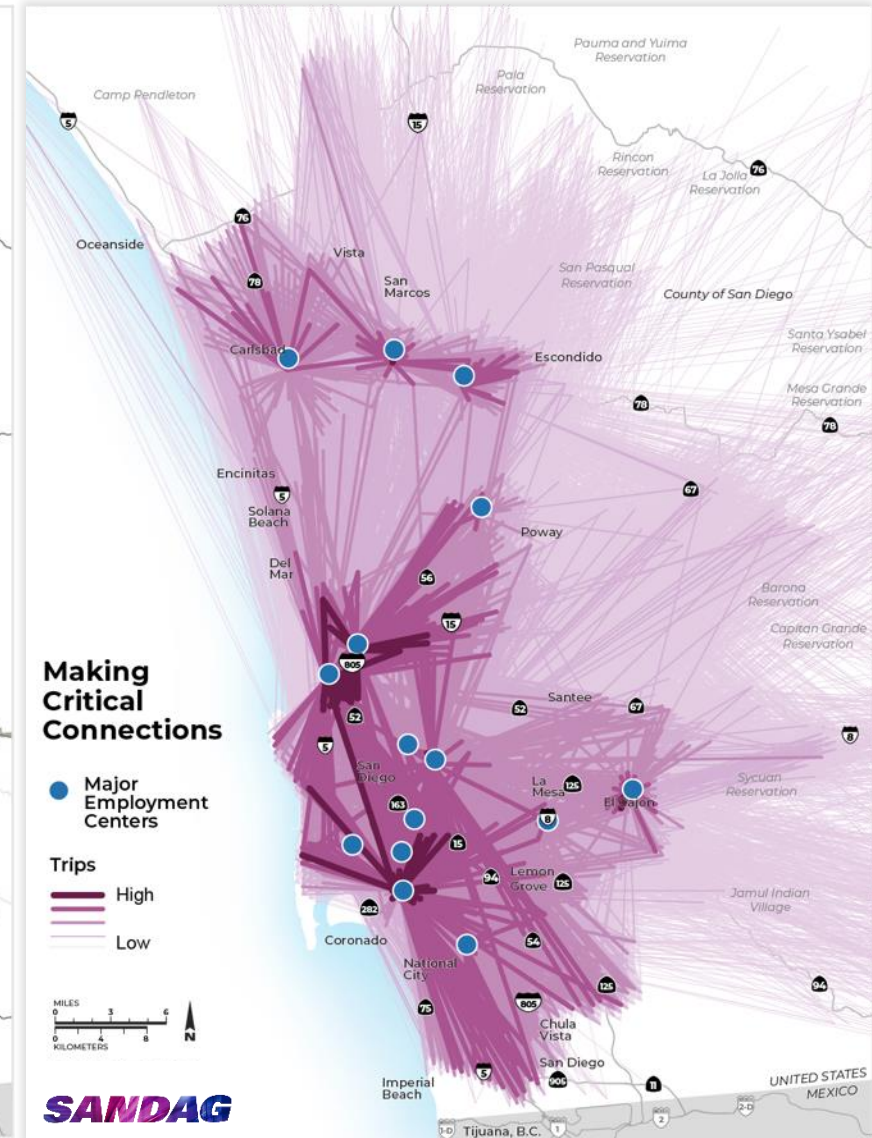
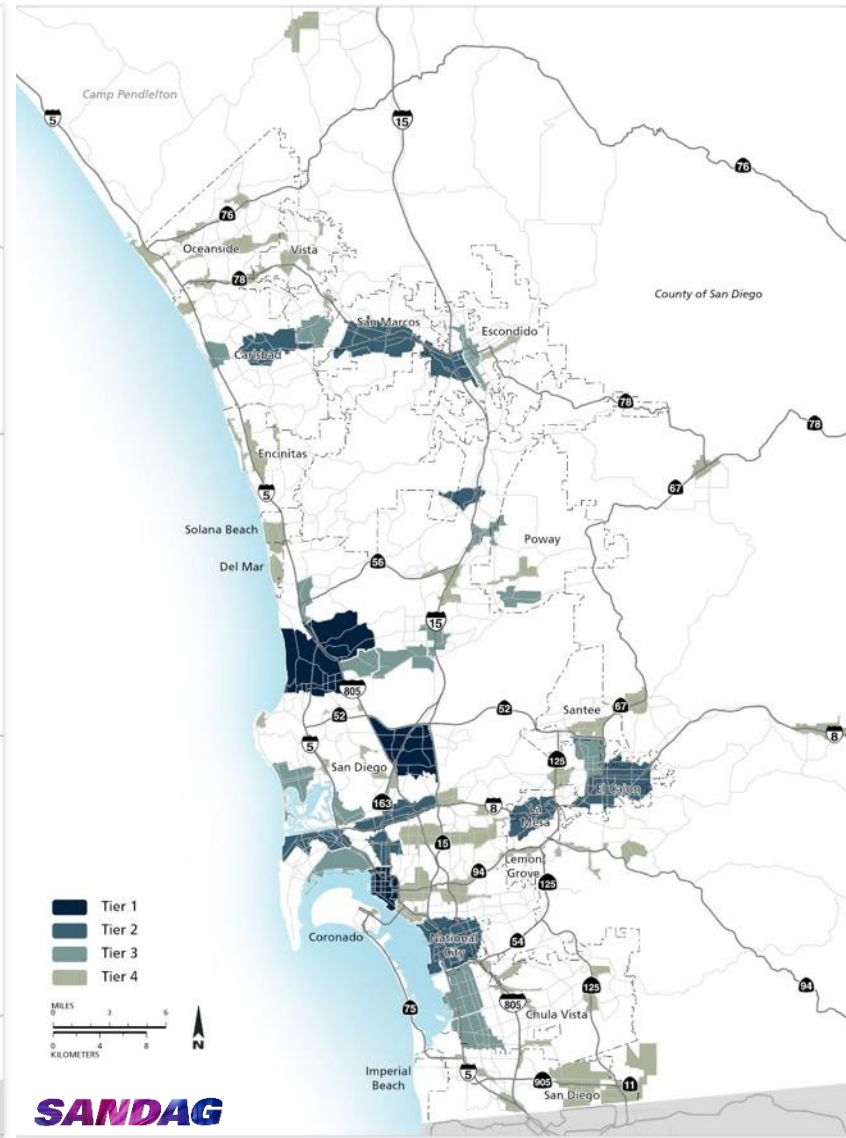
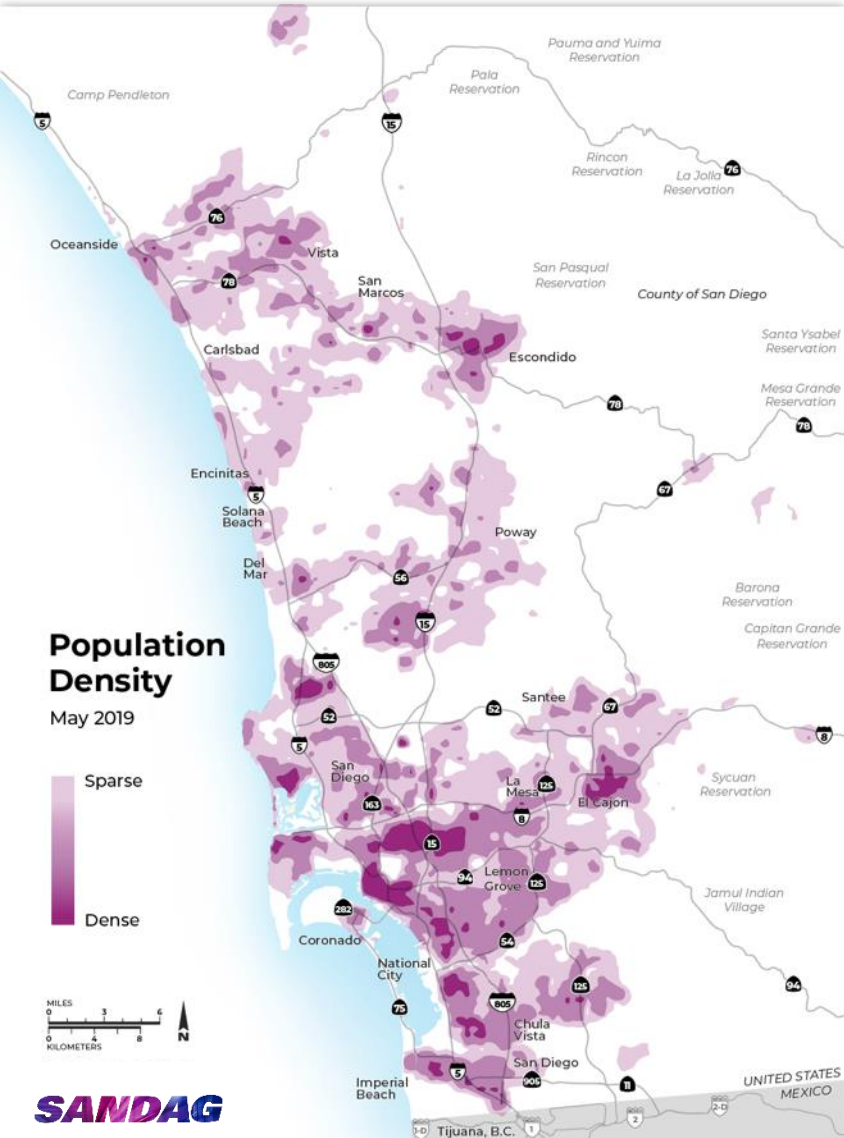
Orange County Transportation Authority (OCTA)

August 8, 2022

A New Vision



Data-Driven Planning: Where people live and work

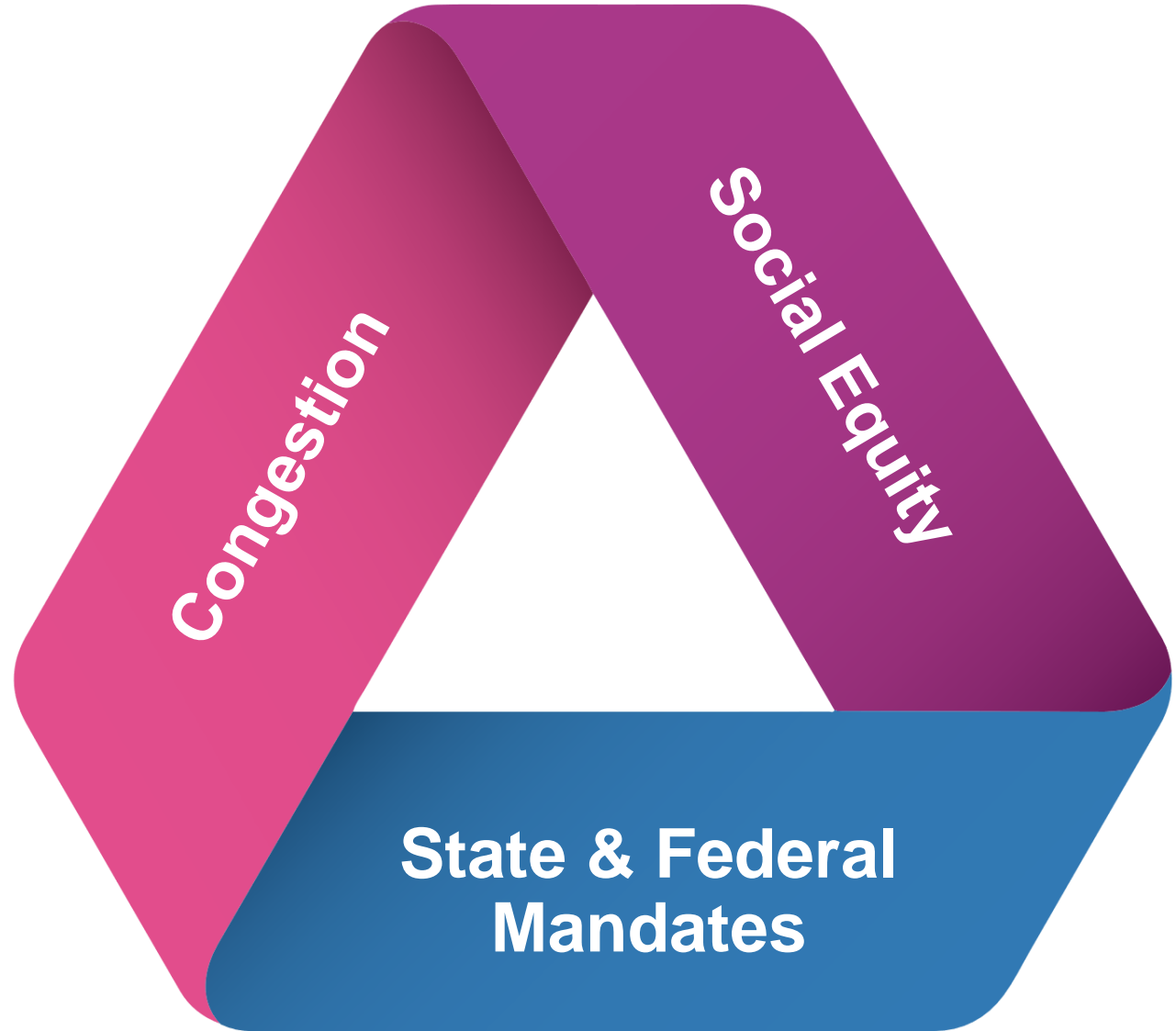


Three Challenges

Reduce *congestion*

Improve *social equity*

Meet *state and federal mandates*



Next OS



Flexible Fleets

Tailored to you



Mobility Hubs

Centers of activity

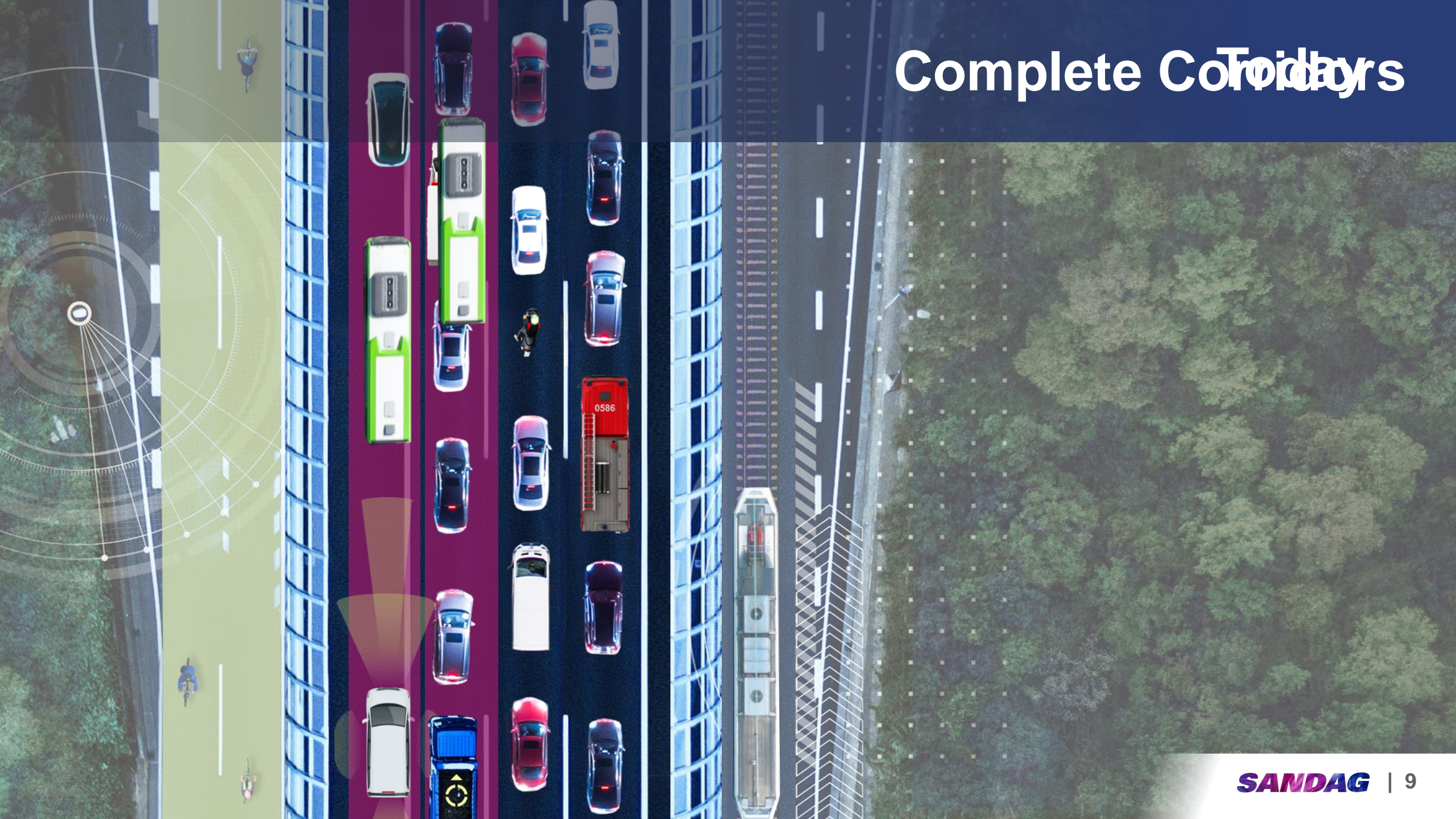


Transit Leap

Fast and flexible










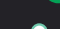







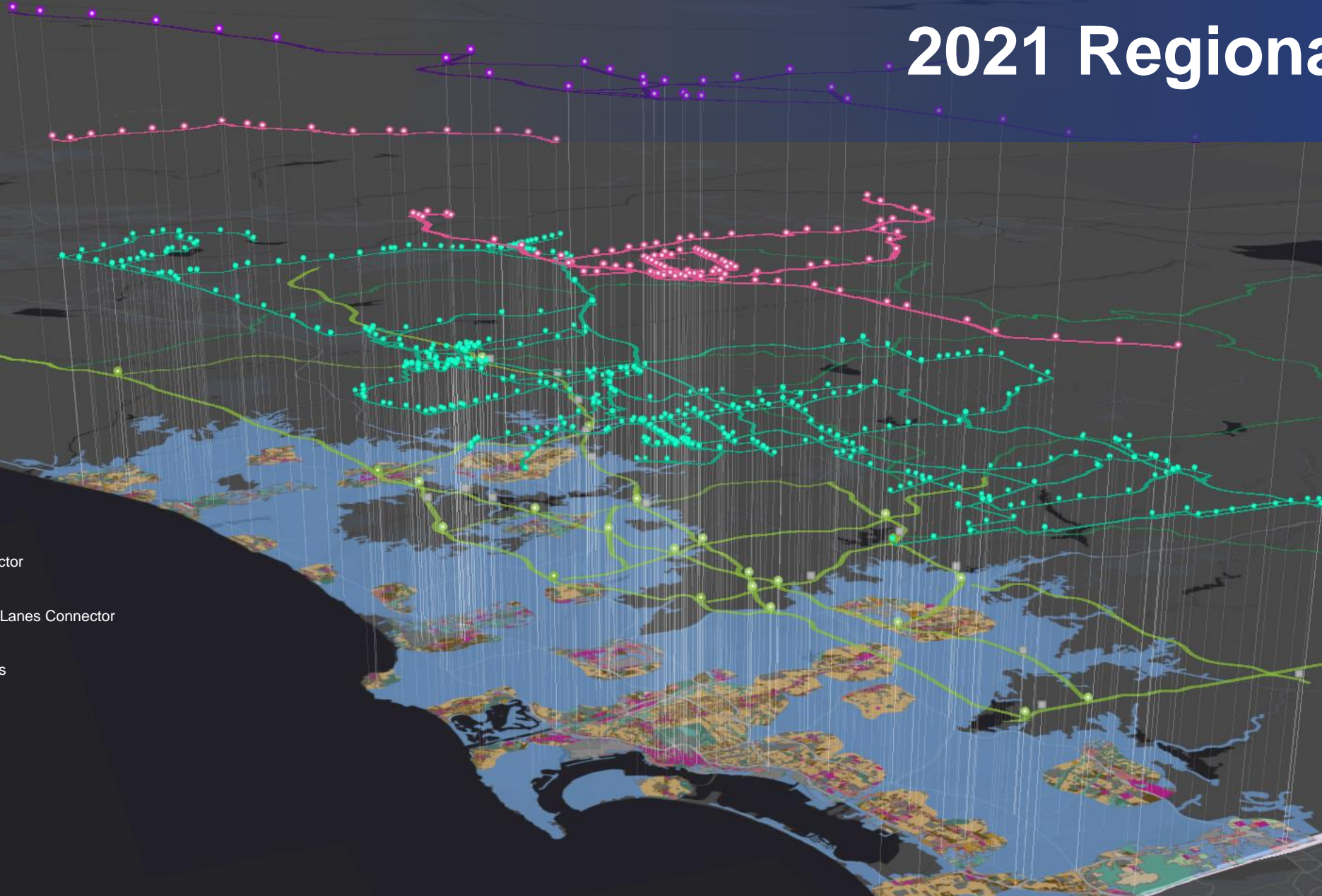
Complete Corridors Today



2021 Regional Plan

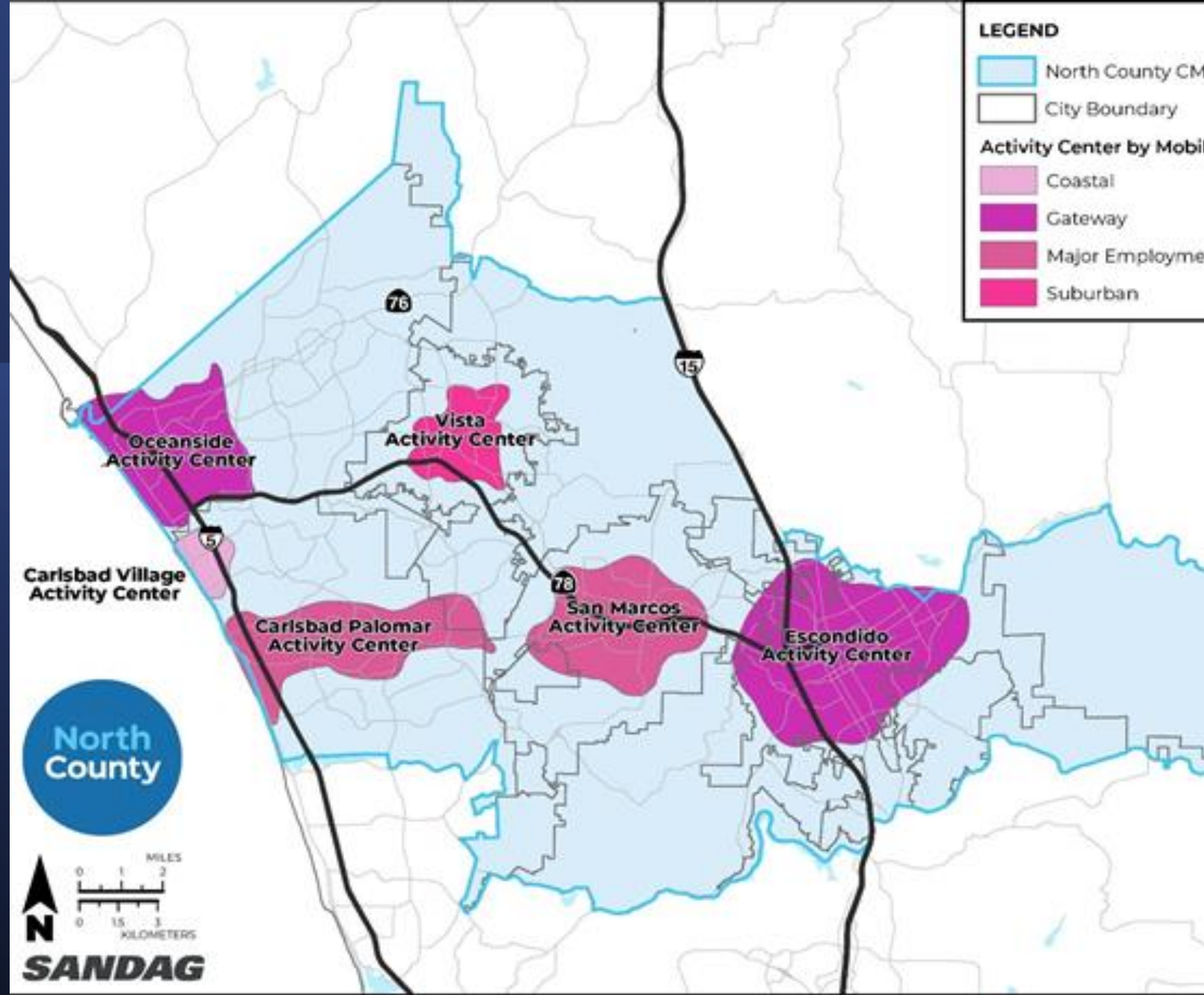
An Integrated System

-  Mobility Hubs
-  Flexible Fleets
-  Managed Lanes Connector
-  Freeway Connector
-  Freeway and Managed Lanes Connector
-  Direct Access Ramp
-  Existing Managed Lanes
-  Managed Lanes
-  Rural Corridor
-  Next Gen Rapid Stops
-  Next Gen Rapid
-  Light Rail Stations
-  Light Rail
-  Commuter Rail Stations
-  Commuter Rail



A closer look at North County

SR78 I-5/78 Interchange I-15/78 Interchange



North Coast Corridor



NCC Corridor





4 Express Lanes



99% Double Track Rail Line



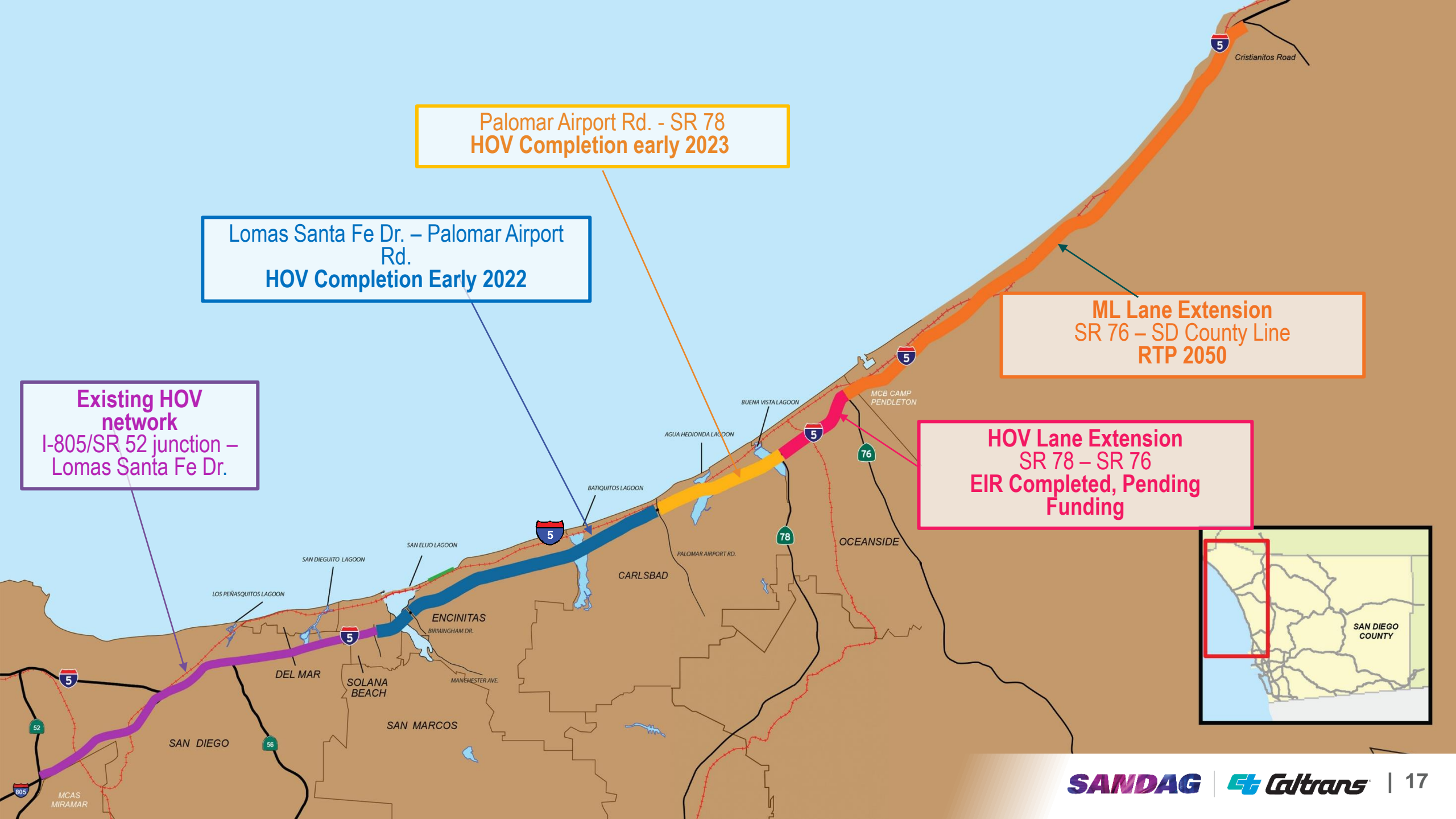
900+ Acres Preserved, Enhanced, Restored



30 Miles of Bike/Pedestrian Paths

Ribbon Cutting and Exploration Day – June 4





Palomar Airport Rd. - SR 78
HOV Completion early 2023

Lomas Santa Fe Dr. – Palomar Airport Rd.
HOV Completion Early 2022

ML Lane Extension
SR 76 – SD County Line
RTP 2050

Existing HOV network
I-805/SR 52 junction –
Lomas Santa Fe Dr.

HOV Lane Extension
SR 78 – SR 76
EIR Completed, Pending
Funding



Stay connected with SANDAG



Website

[SANDAG.org](https://www.sandag.org)



Social media

[@SANDAGregion](#) [@SANDAG](#)



Newsletter

[SANDAG.org/subscribe](https://www.sandag.org/subscribe)



Email: pio@sandag.org

SANDAG

SANDAG