

# Measure M2 Environmental Mitigation Program Update



## Background



- 2006 Measure M2 (M2) approved
- Innovative Freeway Environmental Mitigation Program (EMP)
  - Offsets biological impacts of 13 M2 freeway projects
  - Acquisition of conservation lands (Preserves)
  - Provide funding for habitat restoration
- Approximately five percent of the M2 freeway program revenue dedicated to the EMP



# Environmental Mitigation Program Components



- Conservation plan
- Environmental documents
- Clean Water Act permits
- Streamlined permitting through partnerships with:
  - California Department of Transportation
  - State and federal wildlife agencies
  - State and federal regulatory agencies



# OCTA Preserves and Restoration Projects



- Seven Preserves acquired and permanently protected
  - 1,300 acres
- 12 restoration projects
  - 350 acres
  - Native habitat
- One dam removal project

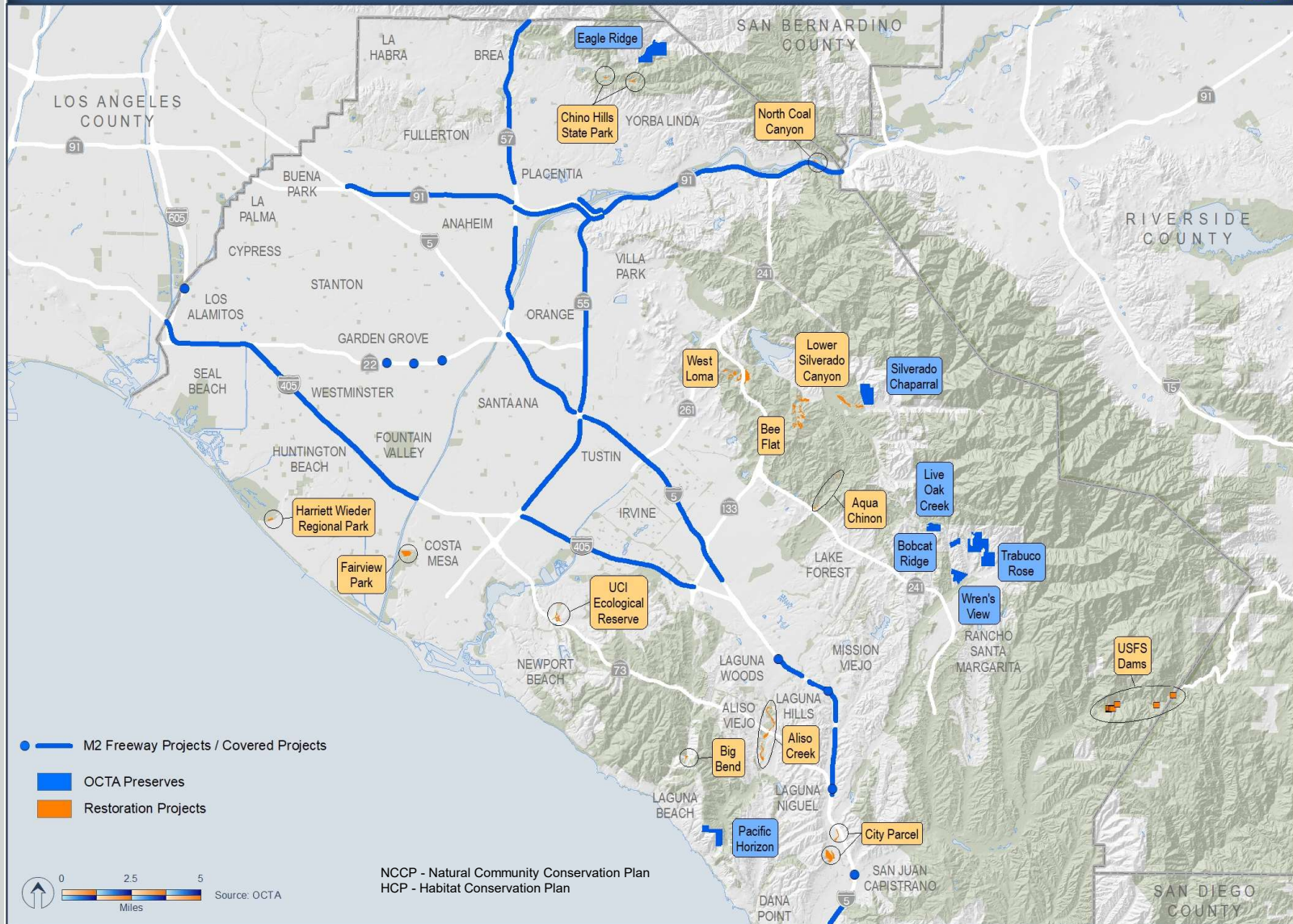




# OCTA Acquisitions and Restoration Projects



## OCTA NCCP/HCP Preserves and Funded Restoration Projects

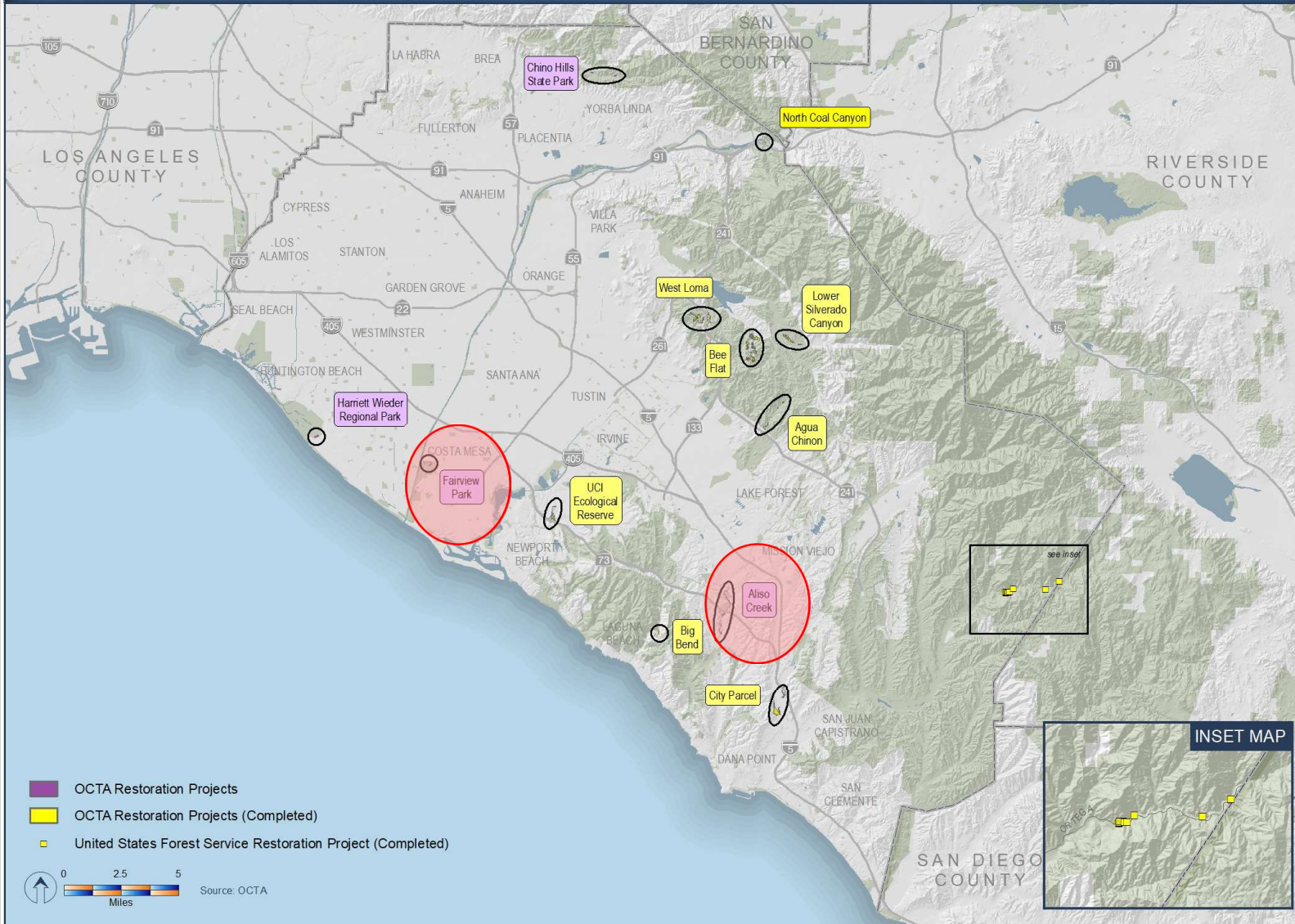




# OCTA Restoration Projects



## Funded Restoration Projects Map



OCTA Restoration Projects  
 OCTA Restoration Projects (Completed)  
 United States Forest Service Restoration Project (Completed)

0 2.5 5 Miles Source: OCTA

