

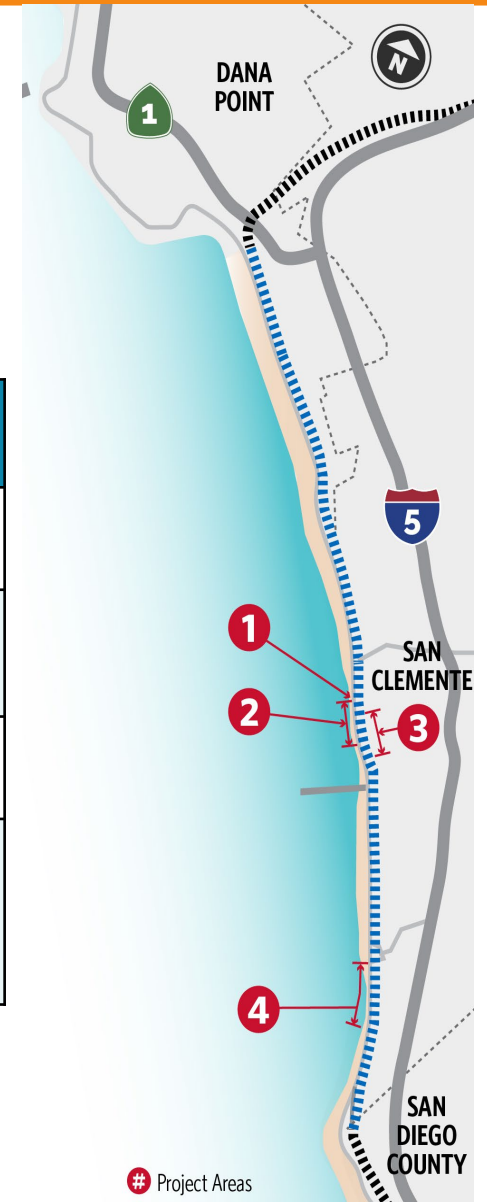
**Update on Emergency Need for Railroad Track  
Stabilization in the Vicinity of Mile Post 203.80 to 204.40  
and 206.00 to 206.70 on the Orange Subdivision**

# Coastal Rail Stabilization Priority Project

- Four priority reinforcement areas were identified in January 2024
- Proposed solutions evaluated at a preliminary design level considering different materials, performance, costs, methods, and schedule

Area	Location (MP)	Challenge	Proposed Solutions
1	203.80 – 203.90	Ongoing deterioration of existing riprap protection	Riprap repair (900 tons/600 CY) followed by sand nourishment
2	204.00 – 204.40	Erosion - no beach at high tide and direct wave attack damaging existing riprap protection	Riprap repair (6,750 tons/4,500 CY) followed by sand nourishment
3	204.07 – 204.34	Steep bluffs with high potential for failure that could impact rail infrastructure	1,400-ft catchment structure
4	206.00 - 206.10 206.42 - 206.70	Near San Clemente State Beach - erosion exposing areas of limited to no riprap protection	Riprap repair (2,100 tons/1,400 CY) and 1,200-ft shoreline protection structure followed by sand nourishment

MP – Mile Post  
CY – Cubic Yard



# Areas 1 and 2 Riprap Repair Activities

- All construction activities have been completed
- Provided responses to the California Coastal Commission (CCC) on Emergency Coastal Development Permit (eCDP) conditions of approval for Areas 1 and 2 which included:
  - Revetment as-built plans
  - Sand and revetment monitoring plans
  - Sand nourishment update
  - California State Transportation Agency commitment letter to perform potential railroad relocation analysis
  - Correspondence on habitat mitigation and monitoring plan
  - Nesting bird monitoring and avoidance memorandum (April 23 and April 28, 2025 surveys)
- Received Notice of Incomplete application from CCC on July 18, 2025, requesting additional construction as-built data and an update on the sand nourishment schedule





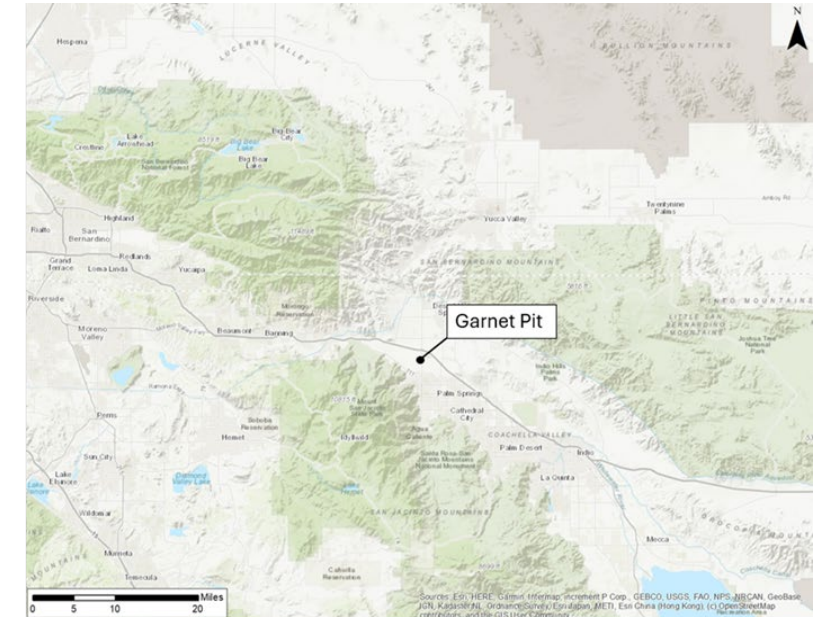
# North Beach and Area 1 Initial Sand Nourishment

## Initial Sand Nourishment

- Orange County Transportation Authority (OCTA) is pursuing an inland sand source (Garnet Pit) to place ~3,200 CY of sand in Area 1 and North Beach, outside of the United States Army Corps of Engineers' (USACE) jurisdiction to expedite sand delivery
- Expecting to be substantially complete by September 14, 2025
- OCTA is coordinating with Southern California Regional Rail Authority (SCRRA) on temporary crossing for initial sand nourishment project

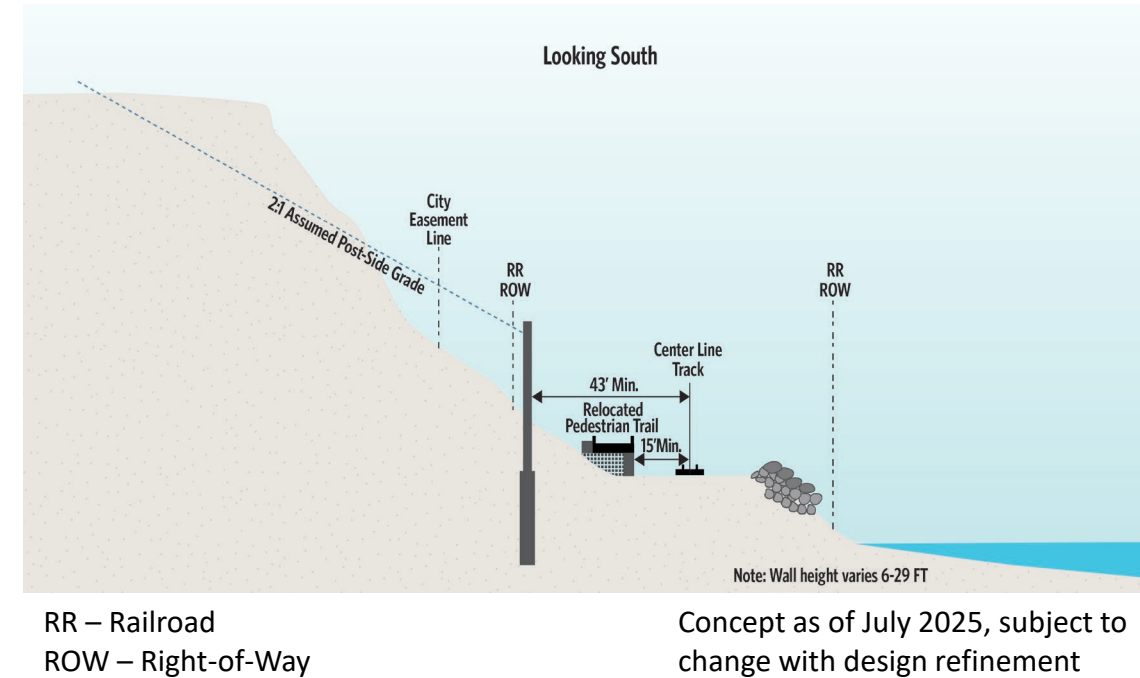
## Areas 1 and 2 Ultimate Sand Nourishment

- Initial sand nourishment is part of the larger effort for placing 240,000 CY of sand nourishment for Areas 1 and 2 approved by the CCC
- OCTA is coordinating with SCRRA for right-of-entry permit, California State Lands Commission, USACE, and CCC on permitting, letter of permission, or waiver needs
- Ongoing coordination with the Orange County Water District (OCWD) on availability of Prado Dam basin material



# Area 3 Mariposa Catchment Wall Activities

- California Transportation Commission allocated \$92.231 million
- Executed contract with the design-build contractor, Condon Johnson & Associates (CJA)
  - 100 percent design package submitted to CCC and City of San Clemente (City), under final review
  - Structural steel column in queue for fabrication
  - Potholing activities to start this week
  - Construction activities to start September 15, 2025
- Cooperative agreement for construction support executed with SCRRA
- Submitted wall aesthetics and trail plan to CCC
- Submitted CDP amendment for soil nail shoring and Verdura Wall for September 2025 CCC meeting
- Received approval from CCC for pedestrian bridge pier removal, site clearing and grubbing, and potholing activities, under eCDP extension





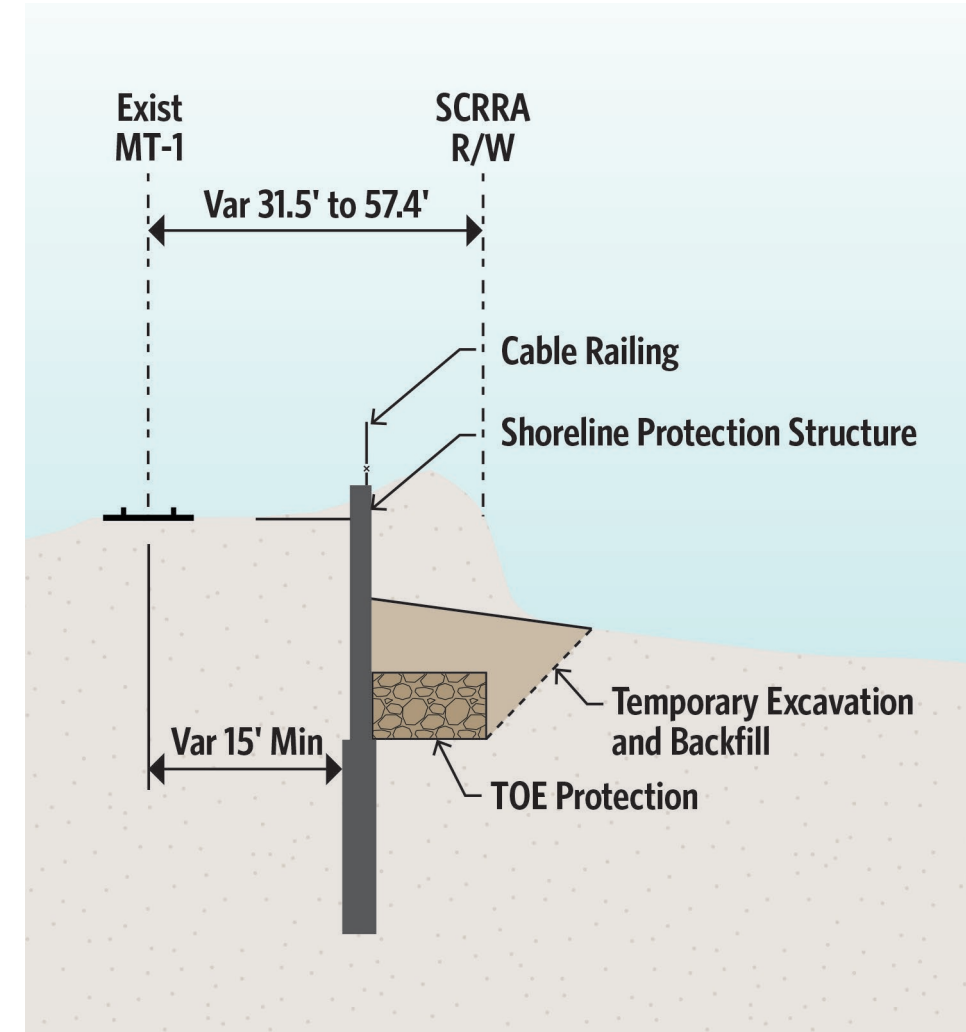
# Area 3 Catchment Wall





# Area 4 Shoreline Protection Structure Activities

- CCC does not recognize Area 4 as an emergency; no eCDP will be issued
- Resumed prior efforts to complete the pending CDP from 2024 and submitted responses on June 30, 2025, seeking opportunities to expedite review and approval
- Resubmitted the draft coastal erosion modeling report to address CCC comments
- CCC approved a CDP waiver for geotechnical investigation testing at the August 15, 2025 CCC meeting
- Final planning and permitting for geotechnical field investigations to begin this month for validation of conceptual design
- CCC to consider Area 4 CDP at future CCC meeting (date to be determined)



*Area 4 – Shoreline Protection Structure*

# Estimated Schedule

## North Beach and Area 1 Initial Sand Nourishment

Estimated Number of Months	1	2	3	4	5	6	7	8	9	10
Contractor Procurement & Sand Nourishment (3 Months)										

## Area 3 Mariposa Catchment Wall Activities

Estimated Number of Months	1	2	3	4	5	6	7	8	9	10	11	12
Contract Duration												
Notice to Proceed (June 17, 2025)												
Final Design	2 Months											
Steel Procurement		4 Months										
Construction			10 Months									

## Area 4 Shoreline Protection Structure Construction

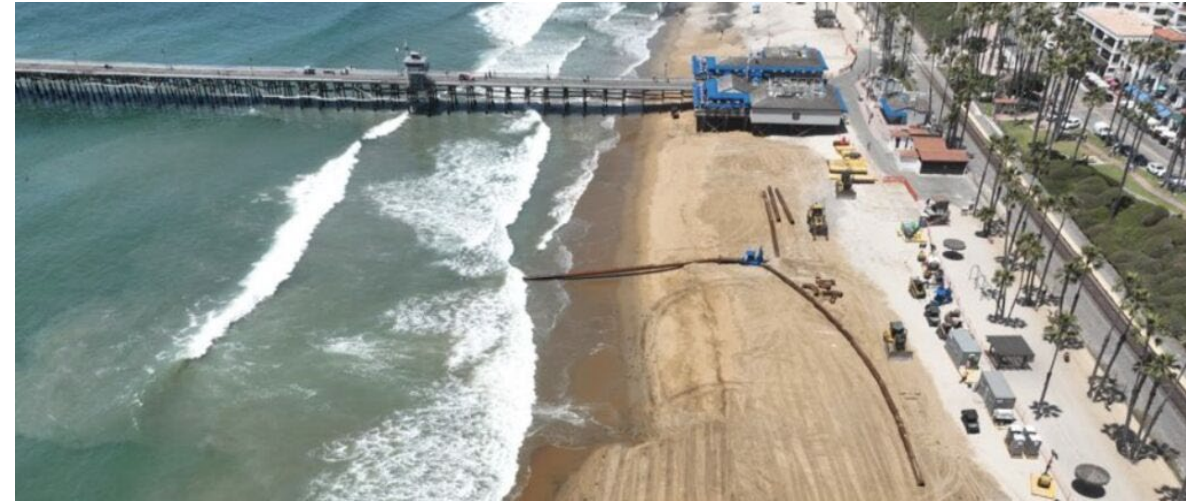
Estimated Number of Months	1	2	3	4	5	6	7	8	9	10
Area 4 - Shoreline Protection Structure	8 Months									

Areas 1, 2, and 4 overall sand nourishment schedule is TBD depending on environmental and permit approvals



# Sand Nourishment

- OCTA is securing federal environmental clearance for offshore sand source dredging and placement of sand for Areas 1, 2, and 4
- OCTA is utilizing previous studies by the City to streamline the process, and the collaborative City offshore sand exploration is scheduled to begin offshore from Dana Point on September 5, 2025, weather conditions permitting
- Marine environmental studies for beach nourishment are underway
- Preliminary schedule (subject to change):
  - Environmental and final design approvals: Anticipated Q4 of 2026
  - Procure sand nourishment contractor: Anticipated Q4 of 2026
  - Bids due date: Anticipated Q4 of 2026
  - Contract award and notice to proceed: Anticipated Q1 of 2027
  - Project completion: Anticipated in 2027



*Pictures from San Clemente Sand Replenishment Project*

# Recommendation

**Reaffirm Resolution No. 2025-068 and authorize the Chief Executive Officer to take all necessary actions to address the emergency need for railroad track stabilization in the vicinity of Mile Post 203.80 to 204.40 and 206.00 to 206.70 on the Orange Subdivision, and to return to the Board of Directors, as required, to report on the status thereof.**